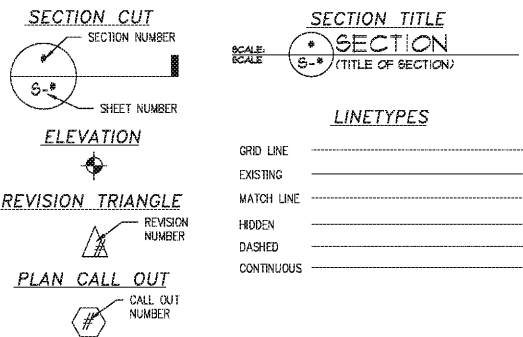


ABBREVIATIONS

Table of abbreviations for concrete, masonry, steel, and other building materials.

Table of abbreviations for structural and architectural elements.

SYMBOLS LEGEND



WIND PRESSURE/SUCTION ON WALL/ROOF (PSF)

Table showing wind pressure/suction values for different zones and areas.

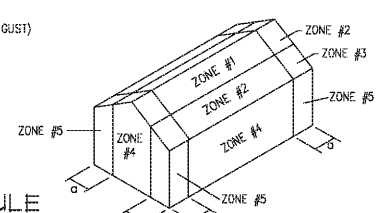


Table for PRE-ENGINEERED METAL BUILDING DESIGN BASIS including roof live load, snow load, and deflection.

STRUCTURAL GENERAL NOTES

GENERAL: ALL DIMENSIONS SHALL BE COORDINATED BETWEEN THE ARCHITECTURAL AND STRUCTURAL DRAWINGS...

CONCRETE: ALL CONCRETE SHALL HAVE THE FOLLOWING MIN. PROPERTIES: LOCATION, 28 DAY STRENGTH, SLUMP, MAX. AGGR.

FOUNDATIONS: CONFORMANCE WITH THE REQUIREMENTS OUTLINED IN THE GEOTECHNICAL SOILS REPORT SHALL BE DETERMINED BY PERFORMING INDUSTRY STANDARD SOIL DENSITY TESTS...

REINFORCING: ALL REINFORCING SHALL BE DOMESTICALLY PRODUCED WITH REBAR CONFORMING TO ASTM-615 FOR GRADE 60 STEEL...

PRE-ENGINEERED BUILDING: A CERTIFIED TESTING AGENCY SHALL BE ENGAGED TO PERFORM INDUSTRY STANDARD INSPECTIONS TO ENSURE CONFORMANCE WITH PLANS AND SPECIFICATIONS...

ANCHOR BOLT DIAMETER SHALL BE DETERMINED BY METAL BUILDING MANUFACTURER LENGTH AND TYPE OF BOLT REQUIRED TO TRANSMIT LOADS TO FOUNDATION SHALL BE BY ENGINEER OF RECORD.

FOUNDATION DESIGN REACTIONS HAVE BEEN INDICATED IN THE DRAWINGS. IF REACTIONS ARE HIGHER NOTIFY ARCH/ENG IMMEDIATELY.

ROOF PURLINS SHALL BE BRACED AT TOP & BOTTOM CHORDS AT THIRD POINTS, MINIMUM AND IN ACCORDANCE W/ A.I.S.I. ROOFING SHEETS SHALL NOT BE CONSIDERED AS ACCEPTABLE FOR TOP CHORD BRACING...

NO FABRICATION SHALL BEGIN UNTIL METAL BUILDING MANUFACTURER RECEIVES REVIEWED, APPROVED SUBMITTALS FROM THE ENGINEER.

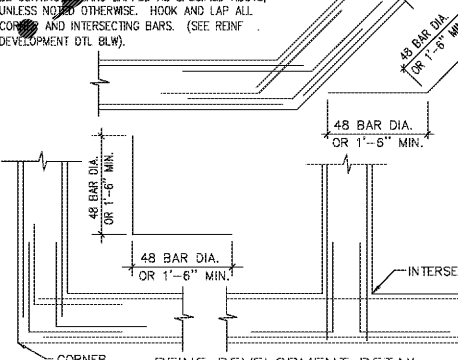
CONCRETE

Table of concrete properties: LOCATION, 28 DAY STRENGTH, SLUMP, MAX. AGGR.

CONCRETE PROPERTIES SHALL BE VERIFIED THROUGH INDUSTRY STANDARD TESTING PROCEDURES BY A CERTIFIED TESTING AGENCY.

CONCRETE MIX DESIGN SUBMITTALS SHALL MEET THE FOLLOWING CRITERIA: 1. EACH MIX DESIGN SHALL BE LABELED TO INDICATE THE AREA IN WHICH THE CONCRETE IS TO BE PLACED...

REINFORCING: ALL REINFORCING SHALL BE DOMESTICALLY PRODUCED WITH REBAR CONFORMING TO ASTM-615 FOR GRADE 60 STEEL...



COVER FOR REINFORCING SHALL BE AS FOLLOWS: 1. CONCRETE CAST AGAINST AND PERMANENTLY EXPOSED TO EARTH: 3"

ALL STRUCTURAL STEEL SHALL BE ASTM A36 UNLESS NOTED OTHERWISE. ENGINEER OF RECORD REQUIRES STRUCTURAL SUBMITTALS FOR REVIEW AS AN INDICATION THAT INTENT HAS BEEN UNDERSTOOD...

ANCHOR BOLT DIAMETER SHALL BE DETERMINED BY METAL BUILDING MANUFACTURER LENGTH AND TYPE OF BOLT REQUIRED TO TRANSMIT LOADS TO FOUNDATION SHALL BE BY ENGINEER OF RECORD.

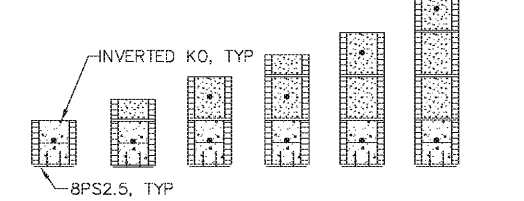
NO FABRICATION SHALL BEGIN UNTIL METAL BUILDING MANUFACTURER RECEIVES REVIEWED, APPROVED SUBMITTALS FROM THE ENGINEER.

SPECIALTY ENGINEERING REQUIREMENTS

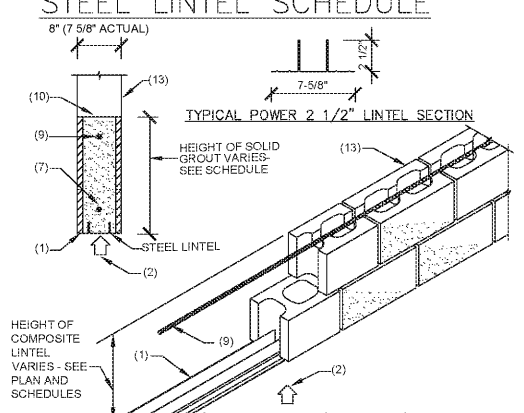
EXTERIOR CURTAINWALLS SHALL BE DESIGNED BY A SPECIALTY ENGINEER, HIRED BY THE CURTAINWALL SUPPLIER AND SHALL INCLUDE FRAME, GLASS, GLAZING AND CONNECTIONS.

FLAGPOLES AND/OR SITE LIGHTING POLES SHALL BE DESIGNED BY A SPECIALTY ENGINEER, HIRED BY THE FLAGPOLE SUPPLIER, AND SHALL INCLUDE POLES, FOUNDATIONS AND CONNECTIONS.

Table for POWERS LINTEL SCHEDULE showing SPAN, TYPE, CAPACITY (KIP), and POWERS CONFIG.



NOTES: 1. ALL LINTELS TO BE GROUTED SOLID W/ 3000 PSI GROUT. 2. SHORE POWERS STEEL LINTELS TO A SOLID BASE (USUALLY A BLOCK SET FIRMLY INTO THE SUBGRADE IS SUFFICIENT)...

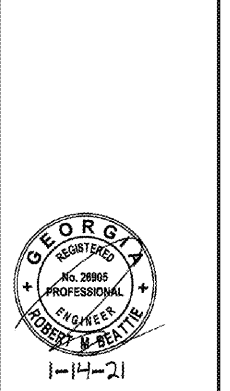


STEEL LINTEL INSTALLATION REQ. 1. POWERS STEEL LINTEL (PATENT NO. 6267200) PREFORMED STEEL LINTEL: GALVANIZED 14 GA THICKNESS (0.0888 INCHES) AND 18 BAR THICKNESS (0.3125 INCHES) GIL COIL, STEEL IS MANUFACTURED BY POWERS STEEL & WIRE PRODUCTS, INC.

DISCLAIMER: DESIGNER'S DESIGN AND CONSTRUCTION REQUIREMENTS WERE BASED ON THE STANDARD PROTOTYPE DRAWINGS PREPARED BY DOLLAR GENERAL THROUGH THEIR OWNERS REPRESENTATIVE.

Robert E. Walker, IV Architect 2229 FIRST AVE SOUTH SUITE 110 BIRMINGHAM, Alabama 35233

ROBERT M. BEATTIE, PE 2825 GREY OAK COURT - DUNWOOD, FL 32826



DOLLAR GENERAL BUILDING Prototype 9100 SF B Store # 22718 DG Woodstock Belts Ferry Rd. Woodstock, GA

CONSTRUCTION DOCUMENTS

PROJECT NO.: 8095.97 ISSUED: 01/15/2021

STRUCTURAL GENERAL NOTES

S0.1