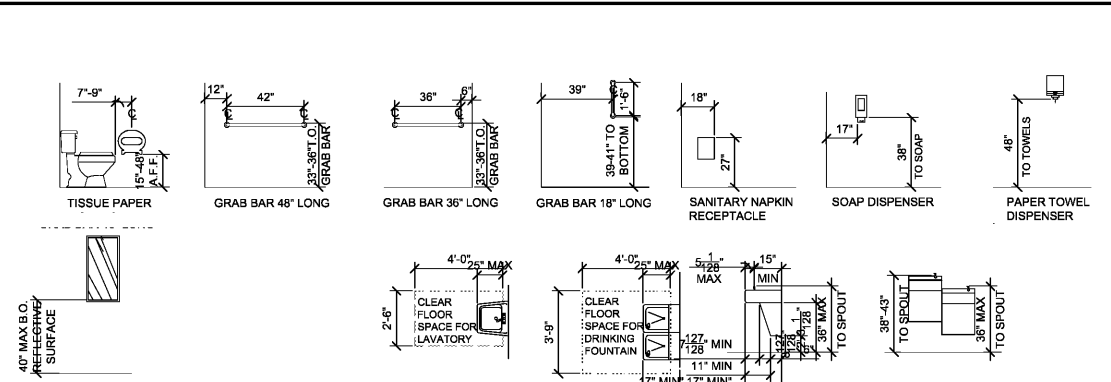
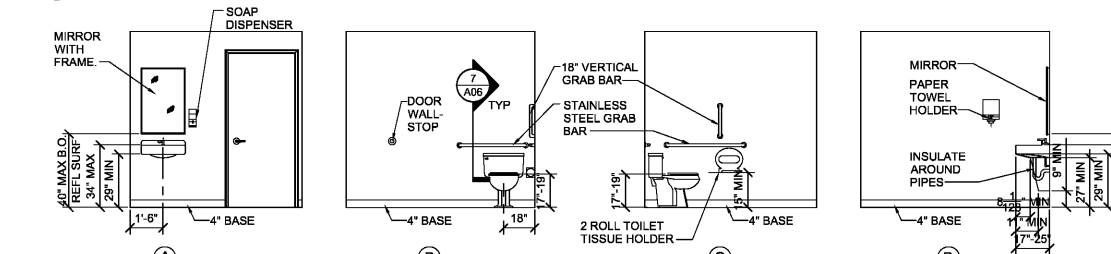


Robert E. Walker, IV
Architect
2229 FIRST AVE. SOUTH
SUITE 110
BIRMINGHAM, Alabama
35233
T-205.254.3212
F-205.254.3269



3 ANSI STANDARD MOUNTING DETAILS
1/8" = 1'-0"



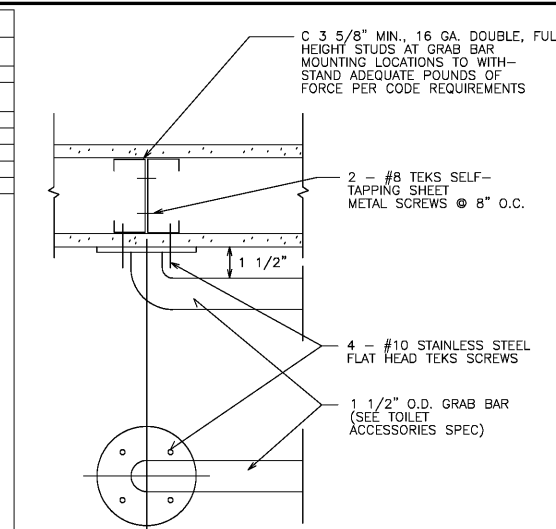
2 RESTROOM ELEVATIONS
1/4" = 1'-0"

TOILET ROOM ACCESSORIES

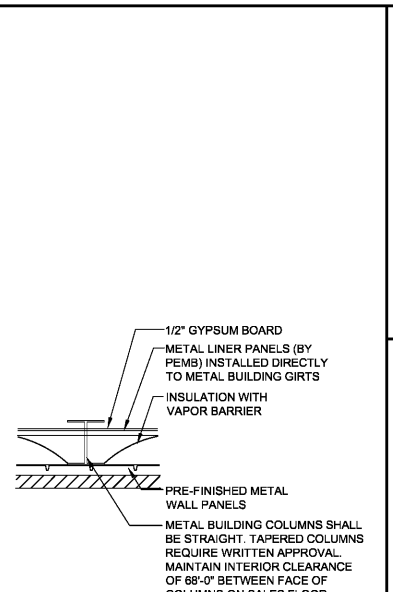
B2740	BOBRICK DOUBLE TOILET TISSUE DISPENSER
B253	BOBRICK PAPER TOWEL DISPENSER
A-24X36	GAMCO 24" X 36" ANGLE FRAME MIRROR
150Sx36	GAMCO 1 1/2" X 36" GRAB BAR
150Sx42	GAMCO 1 1/2" X 42" GRAB BAR
150Sx18	GAMCO 1 1/2" X 18" GRAB BAR
MS-1	GAMCO MOP HOLDER

TOILET ROOM NOTES:

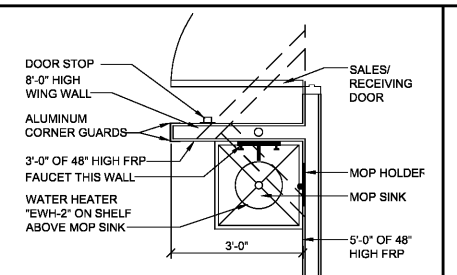
- ALL TOILET ROOM ACCESSORIES PROVIDED BY CONTRACTOR.
- ALL STORES MUST INCLUDE 2 REST ROOMS, EVEN WHEN NOT REQUIRED BY CODE. ANY VARIATION MUST BE APPROVED, IN WRITING, BY THE DOLLAR GENERAL CONSTRUCTION DEPARTMENT.
- RESTROOMS MUST COMPLY WITH ALL BUILDING (FEDERAL, STATE, AND LOCAL) FIRE, AND HEALTH DEPARTMENT CODES. ADA REQUIREMENTS MUST ALSO BE MET IN BOTH RESTROOMS OR LAVATORIES. PLEASE CONTACT DOLLAR GENERAL CONSTRUCTION DEPARTMENT FOR ALTERNATE PLANS FOR THESE SITUATIONS.
- PROVIDE AND INSTALL 2x3" MIRROR (OR LARGER IF REQUIRED BY CODE).
- CONTRACTOR TO INSTALL SOAP DISPENSERS, TOILET PAPER HOLDERS, DOOR CLOSER, EXHAUST FANS, AND ALL BASS SECURITY PARTS IN BOTH RESTROOMS. PROVIDE SOLID BLOCKING IN WALL FOR SUPPORT.



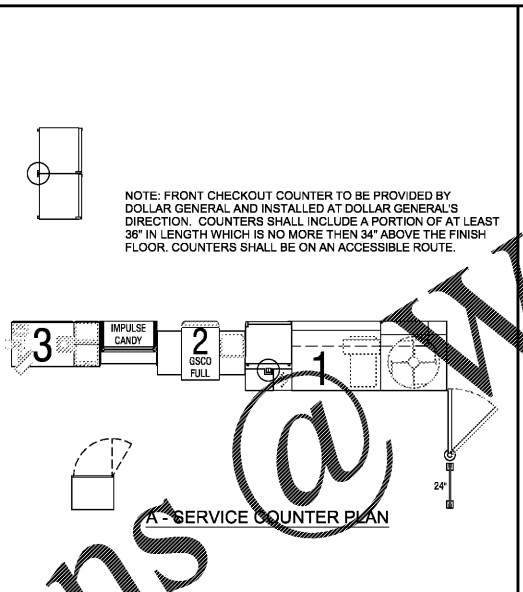
10 ANSI STANDARD MOUNTING DETAILS
1/8" = 1'-0"



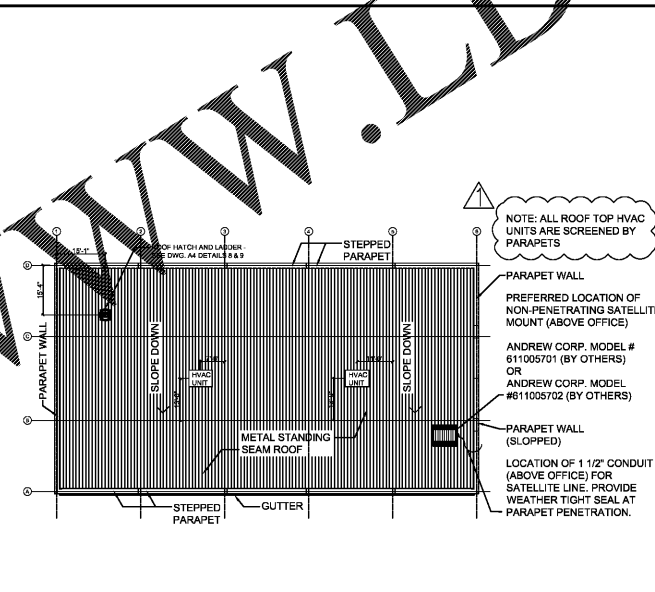
4 DETAIL AT COLUMN
1/2" = 1'-0"



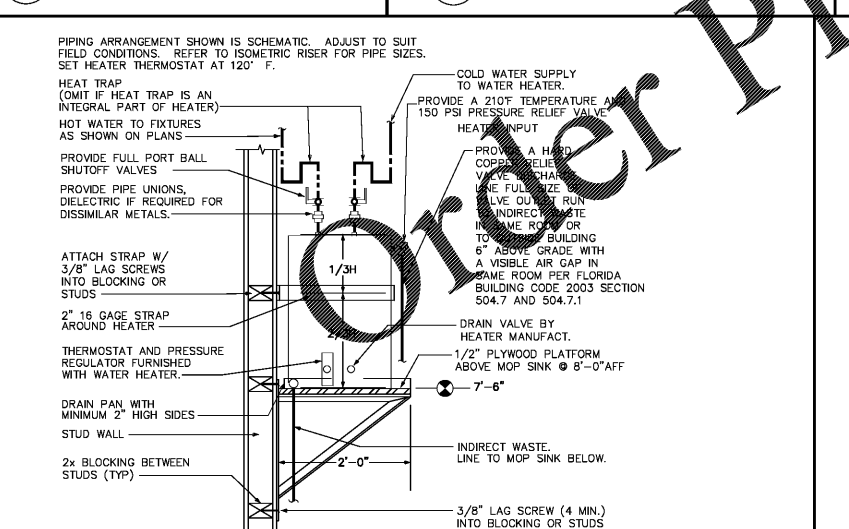
9 MOP SINK DETAIL
1/2" = 1'-0"



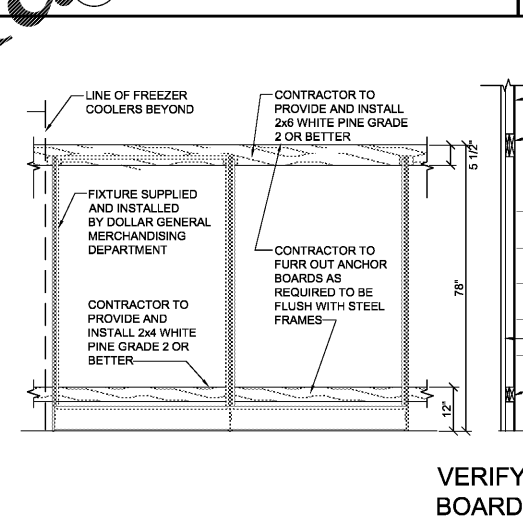
REGISTER ELEVATIONS
1/2" = 1'-0"



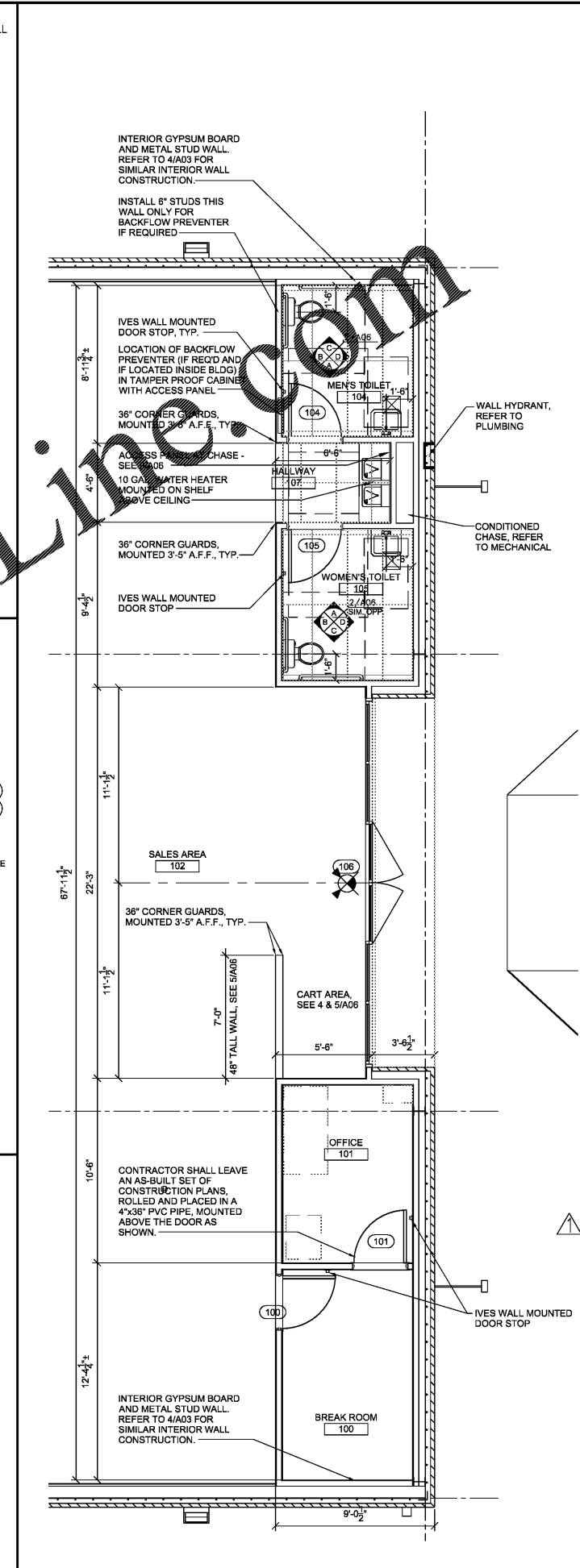
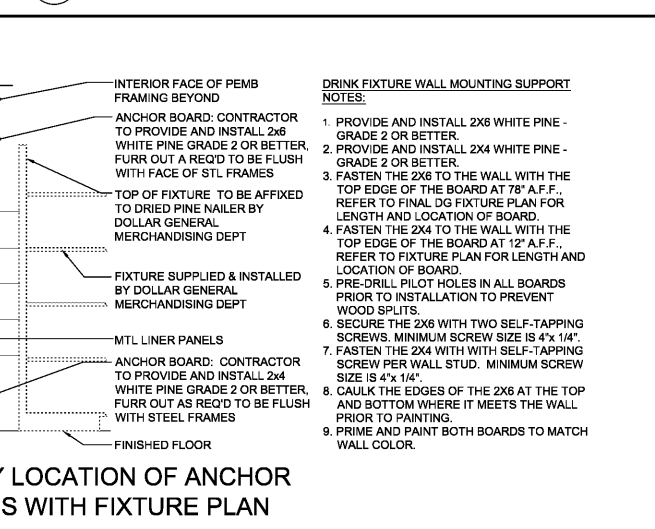
11 ROOF PLAN
NTS



7 WATER HEATER SHELF DETAIL
3/4" = 1'-0"



8 ANCHOR BOARD DETAIL
1/2" = 1'-0"



1 ENLARGED PLAN
1/4" = 1'-0"

County Comments
02/04/21
REVISIONS



DOLLAR GENERAL BUILDING
Prototype 9100 SF B
Store # 22718

DG Woodstock
6721 Bells Ferry Rd.
Woodstock, GA 30189

CONSTRUCTION DOCUMENTS

PROJECT NO.: 8095.97
ISSUED: 01/15/2021

ENLARGED PLANS RESTROOMS DETAILS

A2