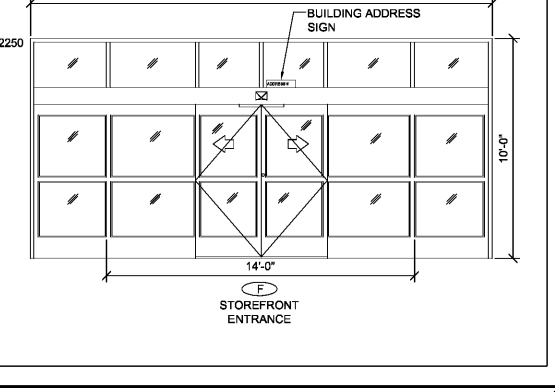
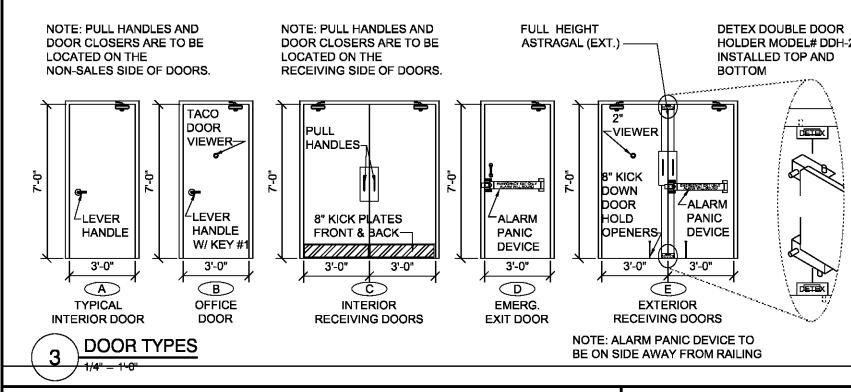


Robert E. Walker, IV  
Architect

2229 FIRST AVE. SOUTH  
SUITE 110  
BIRMINGHAM, Alabama  
35233  
T-205.254.3212  
F-205.254.3269

DOOR SCHEDULE table with columns for NO., Type, SIZE (W, H, T), DETAILS (HEAD, JAMB), DOOR H/W/TYPE, and REMARKS.

ROOM SCHEDULE table with columns for NO., ROOM NAME, FLOOR, BASE (MATERIAL, FINISH), A WALL, B WALL, C WALL, D WALL, CEILING, and REMARKS.

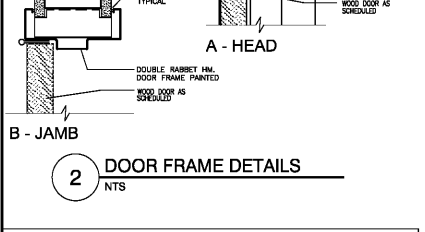


- 1. RECEIVING DOOR REQUIRES AN EXTERIOR LIGHT AND BUZZER BUTTON (BUZZER RINGS ON INSIDE FOR ACCESS).
- 2. EXCEPT FOR EGRESS DOORS ALL DOOR CLOSERS TO BE MOUNTED ROOM SIDE AWAY FROM SALES FLOOR.

- GENERAL NOTES
- 1. BUILDING MUST COMPLY WITH ALL BUILDING (FEDERAL, STATE, AND LOCAL), FIRE, ADA, AND HEALTH DEPARTMENT CODES.
  - 2. WALLS: FINISHED GYPSUM BOARD WITH ALL JOINTS TAPE, MUDDED, SANDED AND PAINTED.
  - 3. PROVIDE DOUBLE STUDS AND BLOCKING TO SUPPORT EQUIPMENT AND MISCELLANEOUS ITEMS WHERE INSTALLED. I.E. TYPICAL CASEWORK, TOILET PAPER HOLDER, ETC.
  - 4. CAULK AND SEAL EXTERIOR JOINT BETWEEN METAL PANELS AND CONCRETE SLAB, AND ALL UNLIKE MATERIALS.
  - 5. TRIM - DOORS, DOOR FRAMES, WINDOW FRAMES, COLUMNS: PAINTED WITH SAME AS ABOVE.
  - 6. FLOORS: SEE FINISH SCHEDULE.
  - 7. CONTRACTOR SHALL VERIFY ALL DIMENSIONS AND COORDINATE ALL TRADES.
  - 8. CONTRACTOR SHALL VERIFY ALL EQUIPMENT LOCATIONS AND DIMENSIONS OF EQUIPMENT. ANY EQUIPMENT FURNISHED BY THE OWNER OR TENANT SHALL BE RECEIVED, STORED, AND INSTALLED BY THE CONTRACTOR. CONTRACTOR SHALL COORDINATE WITH OWNER FOR INSTALLATION.

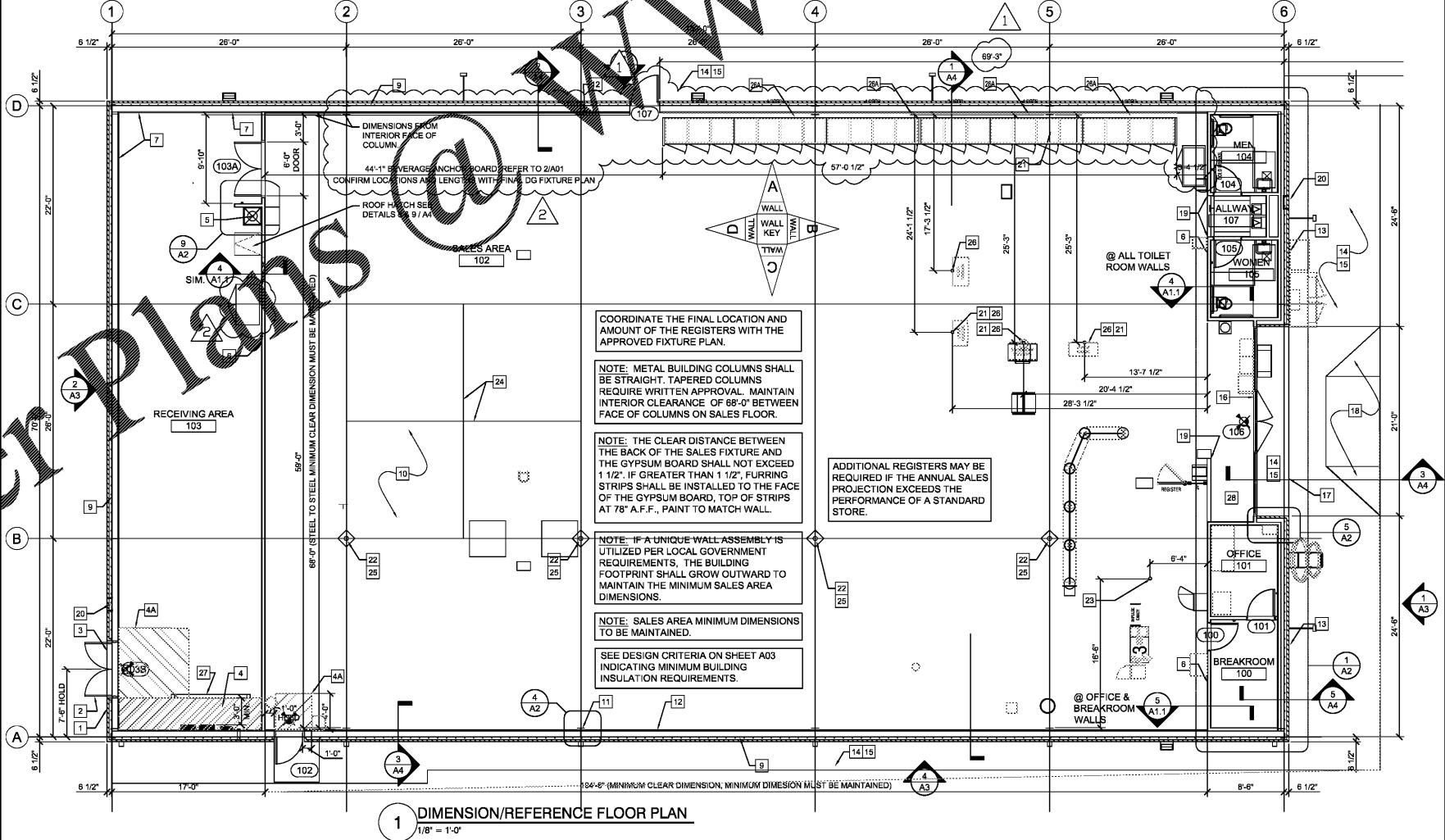
FLOOR PLAN KEYED NOTES

- 1 RECEIVING DOOR BUZZER - TORK MDL #T725 OR EQUAL
- 2 DOOR SCOPE. REFER TO DOOR SCHEDULE.
- 3 WEATHER STRIP & LOW PROFILE THRESHOLD. SEE DOOR SCHEDULE.
- 4 STRIPE FLOOR FOR DESIGNATED EGRESS PATH (PAINT YELLOW) AND 3'-0" DESIGNATED EMS PANEL CLEARANCE (PAINT RED).
- 4A STRIPE FLOOR FOR DESIGNATED ADA EGRESS PATH (PAINT YELLOW).
- 5 PROVIDE AND INSTALL A TEN GALLON WATER HEATER (OR LARGER IF REQUIRED BY CODE) ABOVE THE MOP SINK.
- 6 3 5/8" METAL STUD WITH 1/2" MINIMUM GYPSUM BOARD (BOTH SIDES). REFER TO NOTED WALL SECTION. REFER TO ROOM FINISH SCHEDULE FOR GYPSUM BOARD HEIGHT AT ANY PARTICULAR WALL.
- 7 METAL LINER PANELS TO 8'-0" A.F.F. (BY PRE-ENGINEERED BUILDING MANUFACTURER).
- 8 DIMENSIONS ARE TO COLUMN LINE UNLESS OTHERWISE NOTED.
- 9 METAL BUILDING PANELS (BY PEMB) PROVIDE TAMPER RESISTANT FASTENERS FOR BOTTOM 8'-0" CONCRETE SLAB WITH STRUCTURAL MIN. #6@WY 4 WELDED WIRE MESH OVER POLYETHYLENE VAPOR BARRIER (MIN. 10 MM THICK) OVER CRUSHED STONE BASE, TYPICAL, OR EQUIVALENT. SEE STRUCTURAL DWGS. PROVIDE CONTROL JOINTS AS SHOWN ON S03.
- 11 METAL BUILDING FRAME. REFER TO NOTED WALL SECTION FOR ADDITIONAL INFORMATION.
- 12 1/2" GYPSUM BOARD (TO 10'-0" A.F.F.) OVER METAL LINER PANELS AND INSULATION WITH VAPOR BARRIER.
- 13 8" SPLIT-FACED CMU PAINTED TO MATCH SIDE WALL PANELS. ALIGN FACE OF BLOCK WITH STEEL GIRT. PROVIDE PROPER ANCHORAGE TO STRUCTURE.
- 14 SLOPE CONCRETE 1/8" PER FOOT AWAY FROM BUILDING.
- 16 COORDINATE CONCRETE SIDEWALK WITH CIVIL AND BROOM FINISH, TYPICAL.
- 16 BRONZE STOREFRONT SYSTEM. REFER TO NOTED WALL SECTION FOR ADDITIONAL INFORMATION. CONTINUE GYPSUM BOARD ABOVE STOREFRONT TO DECK.
- 17 LINE OF SOFFIT OR CANOPY ABOVE.
- 18 A.D.A. COMPLIANT ACCESSIBLE RAMP WITH YELLOW PAINTED SIDES TO ACCESSIBLE PARKING STALLS.
- 19 MC CUE CART AND BUMPER GUARDS. TOP INSTALLED @ 3'-5" A.F.F. ORDER TRIM KIT FOR THIS PROTOTYPE.
- 20 WALL HYDRANT. REFER TO PLUMBING DRAWINGS FOR ADDITIONAL INFORMATION.
- 21 REFRIGERATION BY DOLLAR GENERAL.
- 22 ROUND PIPE STEEL COLUMN WITH RECESSED BASE PLATE. PAINT SW7005 PURE WHITE. WRAP COLUMN WITH TIPT LIGHT CARPET (BLACK) FROM BASE TO 48" A.F.F.
- 23 POWER POLE. COORDINATE FINAL LOCATION WITH FINAL DOLLAR GENERAL FIXTURE PLAN (F01).
- 24 CONTROL JOINTS ARE TO BE PLACED ALONG COLUMN LINES AND MID POINT BETWEEN COLUMN LINES. COORDINATE WITH STRUCTURAL DRAWINGS.
- 25 FLOOR AREA AT BASE OF COLUMNS, WITHIN THE CONST JOINTS, TO BE PAINTED BLACK MAGIC TINT.
- 26 ENDCAP COOLER/FREEZER AND DISPLAY LIGHTING AS NEEDED TO BE HARDWIRED THROUGH WHITE SW COORD. GC TO LEAVE BOTTOM HANGING AT 80" A.F.F. (SEE ELECTRICAL). CORD ANCHORED TO PURLINS ABOVE. COORDINATE LOCATION WITH FINAL DOLLAR GENERAL FIXTURE PLAN.
- 26A WALL OUTLETS FOR BANKS OF COOLERS AND FREEZERS, SEE ELECTRICAL FOR DETAILS.
- 27 MC CUE RAILING IN FRONT OF ELECTRICAL PANELS. 8'-0" LONG WITH TOP TWO RAILINGS AND NO MIDDLE POST.
- 28 CART AREA. REFER TO 5 & 8/A06.



FLOOR PLAN GENERAL NOTES

- 1. PRE-ENGINEERED STEEL BUILDING.
- 2. THESE NOTES APPLY TO ALL FLOOR PLAN DRAWINGS.
- 3. ALL EQUIPMENT SHOWN ARE NEW INSTALLATION.
- 4. DIMENSIONS SHOWN IN (±) INDICATE APPROXIMATE DIMENSION WHERE THE DIMENSIONS ARE GOVERNED BY THE EQUAL DIVISIONS BETWEEN GIVEN POINTS.
- 5. ACCESSIBLE TOILET INDICATED SHALL BE PROVIDED WITH ADA AND ACCESSIBILITY REQUIREMENTS PER LOCAL BUILDING CODE, APPROVED FIXTURES, INCLUDING INSULATED PIPE COVER AND OTHER REQUIRED ASSEMBLIES.
- 6. ALL FINISHES TO BE SELECTED BY OWNER AND TO COMPLY WITH ALL APPLICABLE BUILDING CODES.
- 7. PROVIDE AND INSTALL TOILET ROOM ACCESSORIES AND HARDWARE BY ADA COMPLIANT PER LOCAL BUILDING CODE.
- 8. STOREFRONT DOORS: TWO DOUBLE OR SINGLE ACTION 3" ALUMINUM FRAME, FULL GLASS DOORS CENTERED TO SALES AREA SPACE. MATCHING ALUMINUM "BUMPER" ON BOTH SIDES OF DOORS AT 23" AFF.
- 9. DOORS: ALL EXTERIOR DOORS HAVE WEATHER STRIPPING AND SNUG SEAL. ROUND DOOR: OFFICE DOOR (KEY #1) REQUIRE KEYPED H/O PRIVACY LOCK AND DOOR PEER VIEWER. REST ROOM (KEY #2) REQUIRE KEYPED ACCESS WITH PUSH BUTTON INTERIOR LEVER. EXITS ARE KEYPED AND REQUIRE BATTERY ALARMED PANIC HARDWARE. ALL EXTERIOR DOORS WILL HAVE CYLINDER REPLICED BY DOLLAR GENERAL AREA MANAGER WITH INSTA-KEY SYSTEM.
- 10. PROVIDE ALUMINUM THRESHOLD AT ALL EXTERIOR DOORS.
- 11. ALL WOOD DOORS SHALL BE PAINT GRADE, CLOSE GRAINED WOOD, FINISH WITH MIN. TWO COATS OF APPROVED PAINT AND ONE COAT OF CLEAR SEALER.
- 12. DOOR CLOSERS: THE SWEEP PERIOD OF EACH CLOSER SHALL BE 3 SECONDS FROM AN OPEN POSITION OF 70 DEGREES TO A POINT 3 INCHES FROM THE LATCH (MEASURED FROM THE LEADING EDGE OF THE DOOR).
- 13. DOOR OPENING FORCE: THE MAXIMUM FORCE FOR PUSHING OR PULLING OPEN A DOOR SHALL BE AS FOLLOWS:
  - A) FIRE DOORS - PER LOCAL BUILDING CODE
  - B) EXTERIOR HINGED DOORS - 5 LB
  - C) INTERIOR HINGED DOORS - 5 LBTHESE FORCES DO NOT APPLY TO THE FORCE REQUIRED TO RETRACT LATCH BOLTS OR DISENGAGE OTHER DEVICES THAT MAY HOLD THE DOOR IN A CLOSED POSITION.
- 14. ACOUSTIC CEILING TILE



02/08/21  
02/04/21  
REVISIONS

DG  
DOLLAR GENERAL  
BUILDING  
Prototype 9100 SF B  
Store # 22718  
DG Woodstock  
6721 Bells Ferry Rd.  
Woodstock, GA 30189

CONSTRUCTION DOCUMENTS

PROJECT NO.: 8095.97  
ISSUED: 01/15/2021  
FLOOR PLAN  
DOOR SCHED.  
FINISH SCHED.  
A1