

1 LIFE SAFETY PLAN
1/8" = 1'-0"

NOTE: At least one sales counter shall comply with ANSI 117.1 SECTION 904 Counter to be at least 36" wide and be 36" above finish floor. Provide required signage per ADAAG 308.3.

KEYNOTES

- EXIT SIGN
- FIRE EXTINGUISHER TYPE 2A-10BC

WALL LEGEND

- NON-RATED WALL
- BRICK VENEER

SQUARE FOOTAGE LEGEND

TOTAL SQUARE FOOTAGE	10,514 S.F.
OVERALL BUILDING DIMENSIONS	70'-0" X 130'-0"
SALES FLOOR DIMENSIONS	66'-0" X 126'-0"
SALES AREA	7,548 S.F.
STOCK ROOM AREA	1,088 S.F.
CLEAR OFFICE AREA	300 S.F.
REST RM, BREAK RM & HALL AREA	150 S.F.
RECEIVING AREA	4 S.F.
OFFICE	150 S.F.
BREAKROOM	15 Net S.F.
MEN'S RESTROOM	1 S.F.
WOMEN'S RESTROOM	1 S.F.
TOTAL	9,014 S.F.

NOTE: IF THE LOCATION OF ANY ITEM (INCLUDING DOORS) CHANGES, PLEASE CONSULT THE DOLLAR GENERAL CONSTRUCTION DEPARTMENT FOR COOLER RECEPTACLE LOCATION.

NOTE: ALL SHELVING AND FIXTURES TO BE PROVIDED BY DOLLAR GENERAL. THE ABOVE LAYOUT OF SHELVING AND FIXTURES IS FOR REFERENCE ONLY; THE CONTRACTOR TO PROVIDE AN RFI REQUESTING FINAL FIXTURE LAYOUT AND POWER LOCATION.

CODE REVIEW DATA
APPLICABLE CODES

INTERNATIONAL BUILDING CODE, 2018 EDITION,
INTERNATIONAL FIRE CODE, 2018
INTERNATIONAL MECHANICAL CODE, 2018 EDITION
INTERNATIONAL FUEL GAS CODE, 2018 EDITION
NATIONAL ELECTRICAL CODE, 2017 EDITION
INTERNATIONAL ENERGY CONSERVATION CODE, 2015 EDITION,
2018 NFPA 101 - LIFE SAFETY CODE
STATE OF GEORGIA AMENDMENTS

BUILDING INFORMATION

OCCUPANCY:	Group M - Mercantile Non-Separated Use	IBC Reference 309.1
CONSTRUCTION TYPE:	Type II-B	
FULLY SPRINKLED:	NO	
BUILDING HEIGHT:	17'-0"	
NUMBER OF STORIES:		

BUILDING AREA

OCCUPANCY	CONSTRUCTION TYPE	ALLOWABLE AREA	ACTUAL AREA (Gross SF)	IBC Reference TABLE 503
M	II-B	12,500 sf	9,014 sf	

FLOOR AREAS

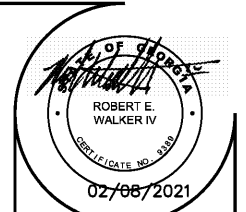
OCCUPANCY	AREA (GSF)	AREA/OCCUPANT (SF)	OCCUPANT LOAD
SALES AREA	7,548 sf	30 Gross	252
RECEIVING AREA	1,088 sf	300 Gross	4
MEN'S RESTROOM	95 sf	150 Gross	1
WOMEN'S RESTROOM	95 sf	150 Gross	1
OFFICE	100 sf	150 Gross	1
BREAKROOM	88 sf	15 Net	6
TOTAL	9,014 sf		265

EGRESS CAPACITY TABULATION

OCCUPANCY	OCCUPANT LOAD	EGRESS WIDTH REQUIRED	EGRESS WIDTH PROVIDED
MERCANTILE	265	DOORS: 265 X 0.2 = 53"	154"

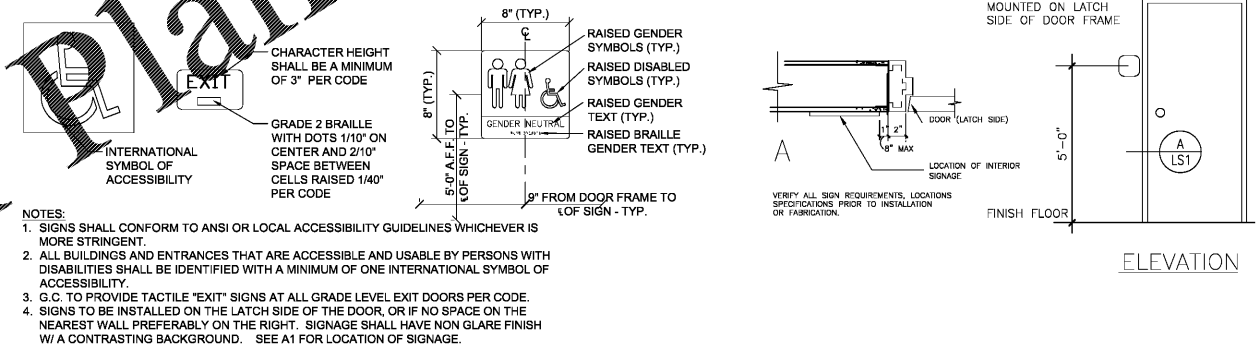
MEASUREMENT OF MEANS OF EGRESS

	ACTUAL	NFPA
MAX. ALLOWABLE TRAVEL DISTANCE:	134'	36.2.6.1
MAX. DEAD END LIMIT:	20'	Table A.7.6
MAX. COMMON PATH OF TRAVEL:	75'	Table A.7.6
MIN. CORRIDOR WIDTH:	44" / 60"	1016.2
MIN. CLEAR OPENING OF EXIT DOORS:	32" / 32"	

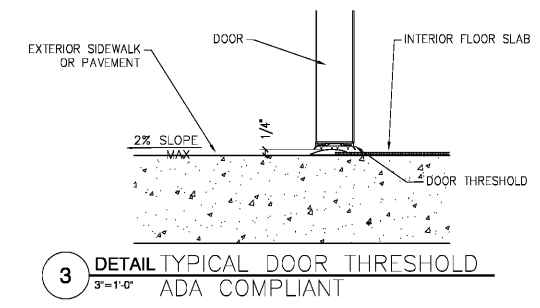


Robert E. Walker, IV
Architect
2229 FIRST AVE. SOUTH
SUITE 110
BIRMINGHAM, Alabama
35233
T-205.254.3212
F-205.254.3269

Order Plans @



2 DETAIL TYPICAL INTERIOR SIGNAGE DETAIL
NTS ADA COMPLIANT



3 DETAIL TYPICAL DOOR THRESHOLD
3"=1'-0" ADA COMPLIANT

REVISIONS

02/08/21	County Comments
02/04/21	

DG
DOLLAR GENERAL BUILDING
Prototype 9100 SF B
Store # 22718
DG Woodstock
6721 Bells Ferry Rd.
Woodstock, GA 30189

CONSTRUCTION DOCUMENTS

PROJECT NO.: 8095.97
ISSUED: 01/15/2021
LIFE SAFETY PLAN

LS1