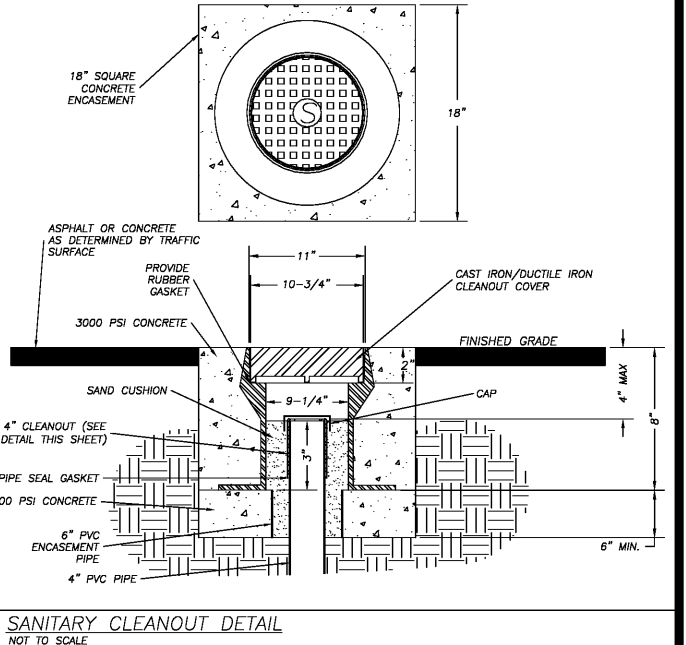
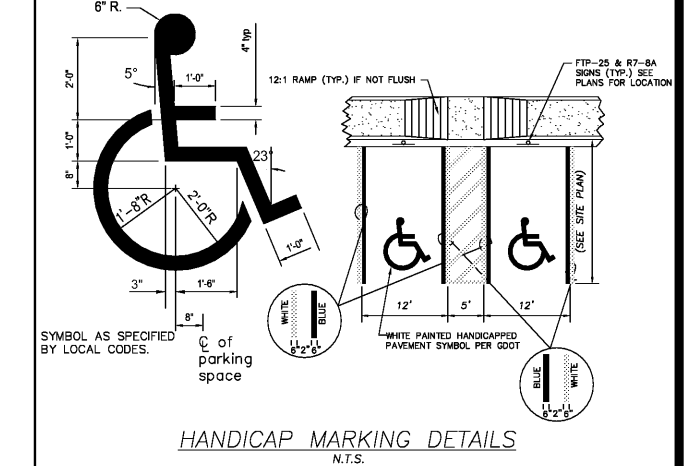
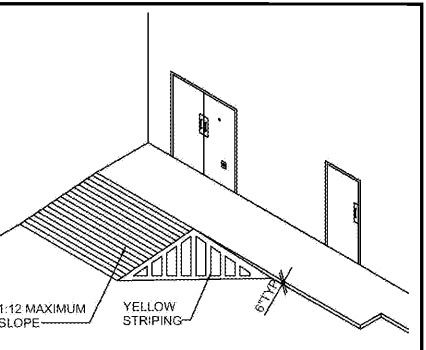
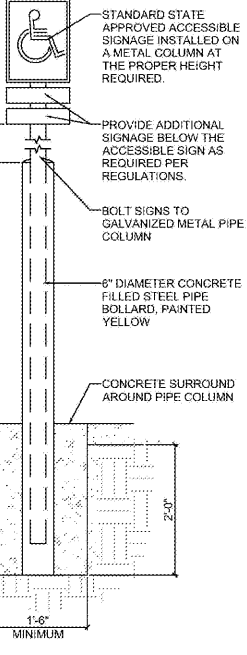
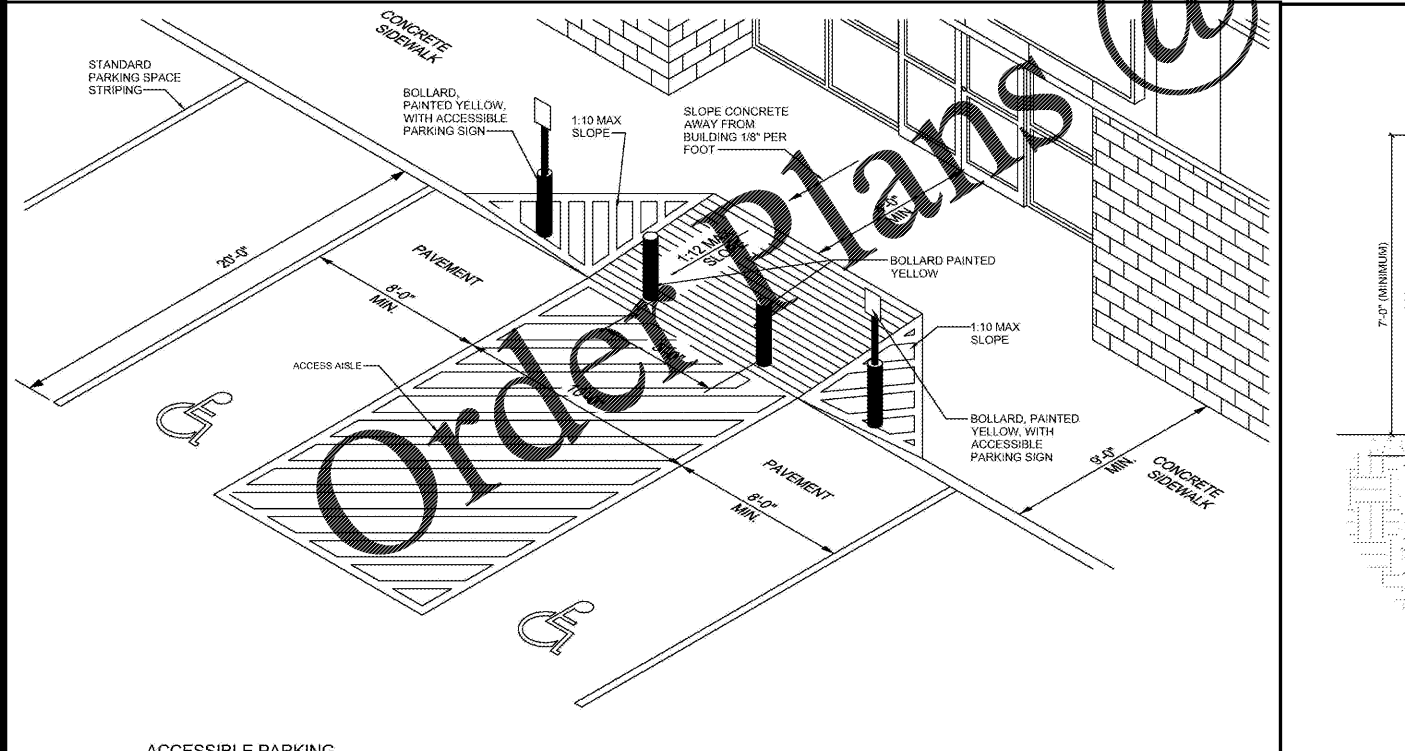
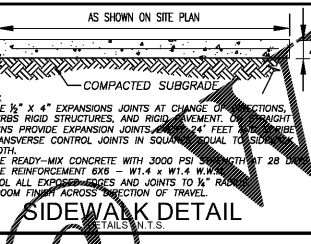
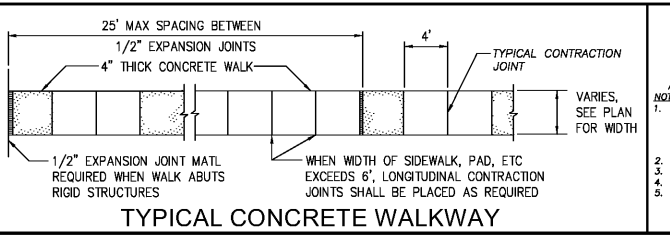
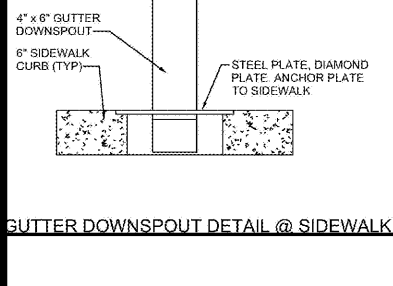
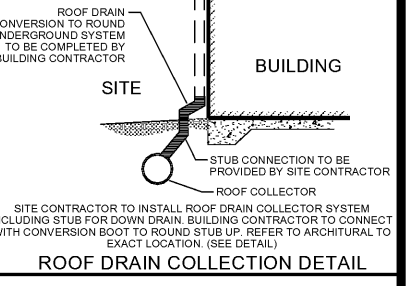
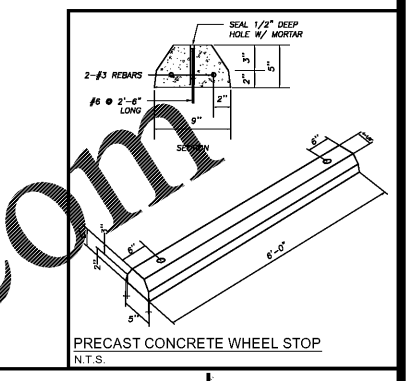
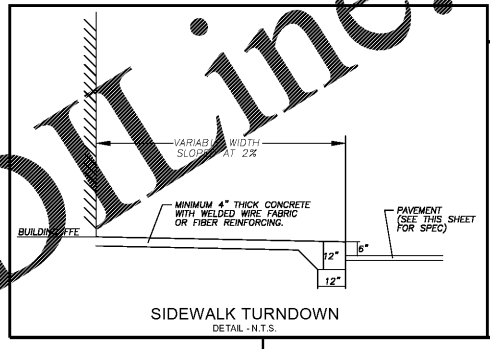
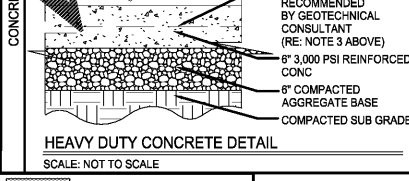
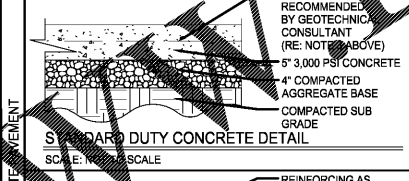
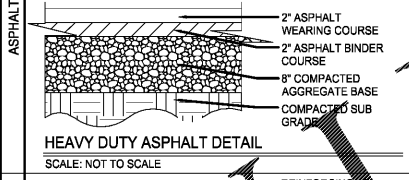
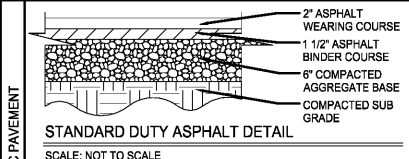


PAVEMENT DETAILS

- DETAILS ARE DOLLAR GENERAL STANDARD REQUIREMENTS AND MAY INCREASE OR DECREASE WITH VARIOUS SOIL CONDITIONS. A GEOTECHNICAL INVESTIGATION WITH PAVEMENT DESIGN RECOMMENDATIONS SHALL BE COMPLETED FOR EACH DEVELOPMENT. THE FOLLOWING DETAILS ARE MINIMUM DOLLAR GENERAL PAVEMENT REQUIREMENTS. INCREASED RECOMMENDATIONS ARE TO BE USED.
- THE SUBGRADE MATERIALS SHALL BE PROOF ROLLED AND/OR SCARIFIED AND COMPACTED PRIOR TO PLACEMENT OF BASE MATERIAL. WHERE EXISTING SUBGRADE MATERIALS ARE UNSUITABLE, THEY SHALL BE REMOVED AND REPLACED WITH COMPACTED SELECT MATERIAL IN ACCORDANCE WITH GEOTECHNICAL RECOMMENDATIONS.
- HEAVY DUTY CONCRETE PAVEMENT AND STANDARD DUTY CONCRETE PAVEMENT (AS RECOMMENDED BY THE GEOTECHNICAL REPORT OR DOLLAR GENERAL MINIMUMS) SHALL BE STEEL REINFORCED. REINFORCEMENT TYPE SHALL BE PRIOR APPROVED BY DOLLAR GENERAL.
- CONCRETE PAVEMENT PLAN SHALL BE PROVIDED TO DOLLAR GENERAL FOR PRIOR APPROVAL. ALL JOINTS MUST BE SEALED WITH AN APPROVED SEALANT. STEEL REINFORCING SHALL BE USED AT JOINTS. REFER TO ACI 308R (GUIDE FOR DESIGN AND CONSTRUCTION OF CONCRETE PARKING LOTS) FOR JOINT DESIGN AND LAYOUT.



Rochester & Associates, Inc.
425 Oak Street N.W. • Gainesville, Georgia 30501
(770)718-0600 (770)718-9090 Fax • www.rochester-assoc.com

CONSTRUCTION DETAILS - 1
FOR:
DOLLAR GENERAL WOODSTOCK
LAND LOTS 682 & 683 OF THE 21ST STREET SECTION, CHEROKEE COUNTY, GEORGIA

NO.	DATE	SUBMITTAL - COUNTY COMMENTS	DESCRIPTION	REVISIONS
A	2.11.2021	2ND		

ANY CHANGES OR ALTERATIONS MADE TO THESE CONSTRUCTION DRAWINGS WITHOUT THE SIGNATURE OF THE DESIGNER SHALL BE VOID. THE SEAL SHOWN ON THESE DRAWINGS IS THE ORIGINAL DRAWING AND IS NOT TO BE REPRODUCED OR COPIED. ANY CHANGES OR ALTERATIONS MADE TO THESE CONSTRUCTION DRAWINGS WITHOUT THE SIGNATURE OF THE DESIGNER SHALL BE VOID.



SHEET **C-6.0** OF **18**
DATE: 12/30/2020
SCALE: N.T.S.
JOB NO. 0215090.DWG
DWG NO. C051.dwg
DRAWN BY: TFL