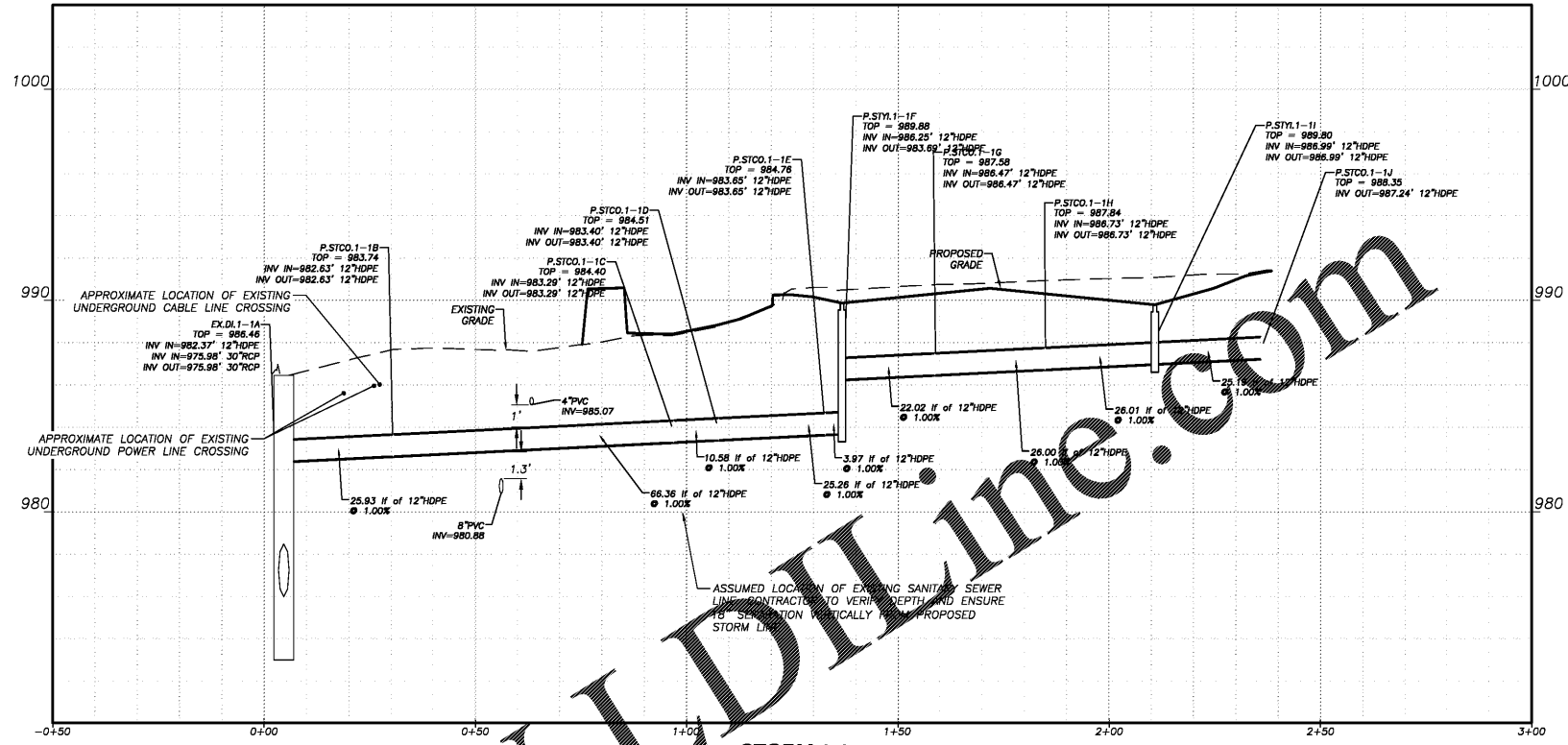
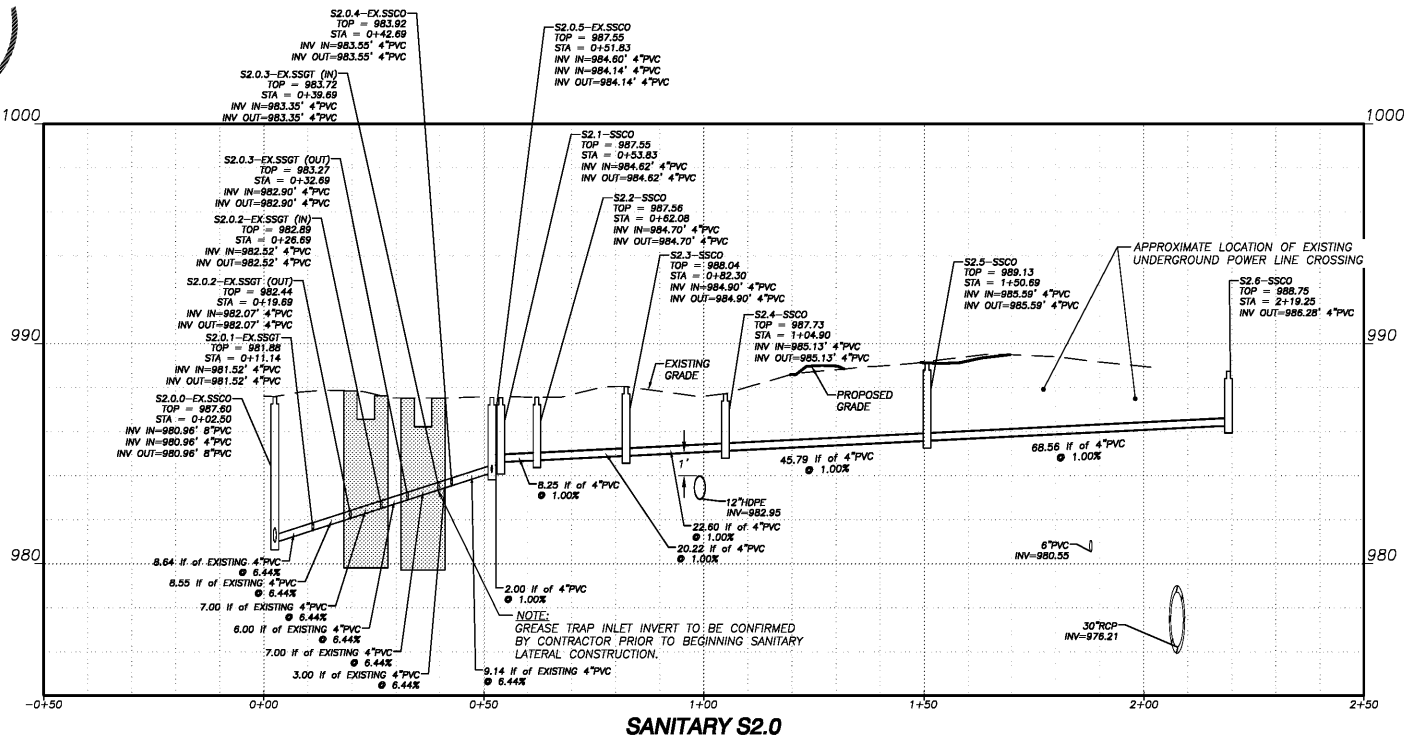
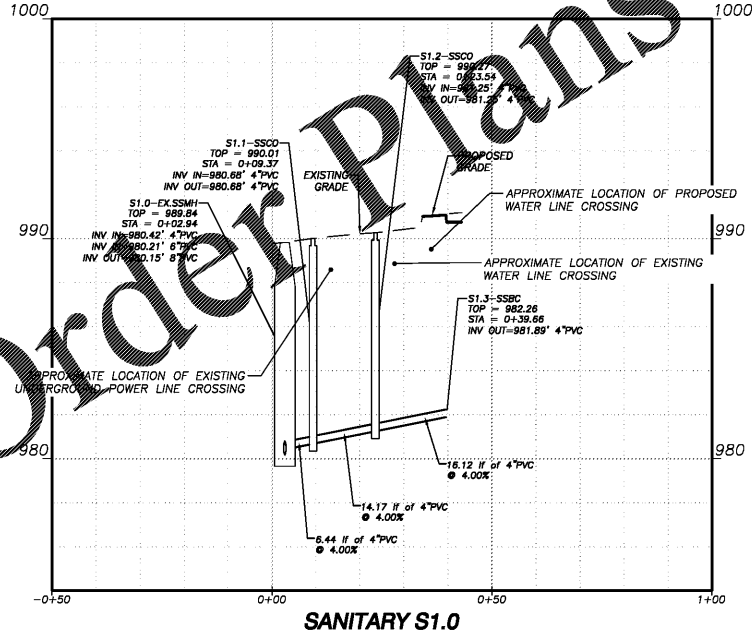


CHEROKEE COUNTY STORMWATER NOTES:

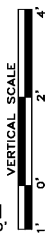
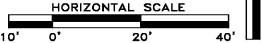
- ALL HDPE PIPE SHALL INCLUDE BEDDING DETAILS PER THE MANUFACTURER ON THE PLANS. INCLUDE THE FOLLOWING NOTES ON THE PROFILE SHEETS FOR HDPE PIPE:
- HIGH-DENSITY POLYETHYLENE PIPE (HDPE) SHALL MEET AASHTO M-294 TYPE "S" WITH AN ANNULAR EXTERIOR AND SMOOTH INTERIOR. PIPE SHALL CONSIST OF A BELL AND SPIGOT JOINT INCORPORATING AN F477 GASKET TO INSURE A LEAK-TIGHT PERFORMANCE. HDPE PIPE SHALL BE BACK FILLED BY CONCURRENTLY APPLYING 8" LIFTS ON EACH SIDE OF THE PIPE USING TWO (2) TAMPS (ONE FOR EACH SIDE). BACKFILL SOIL SHALL CONFORM TO CLASS II, B2 OF THE GEORGIA DEPARTMENT OF TRANSPORTATION STANDARD SPECIFICATIONS FOR CONSTRUCTION OF ROADS AND BRIDGES, CURRENT EDITION. ANY MANUFACTURER'S SPECIFICATIONS FOR HDPE PIPE EXCEEDING THIS REQUIREMENTS SHALL APPLY WHERE APPLICABLE.
- HDPE PIPE MUST CONFORM TO CURRENT GDOT STANDARDS (STANDARD THERMOPLASTIC PIPE 1039P). ASTM F2848 PIPE IS NOT AN ACCEPTABLE SUBSTITUTION.
- ALL METAL PIPE SHALL BE FULLY COATED OR ALUMINIZED.
- ANY STRUCTURE PLACED COMPLETELY WITHIN FILL MUST HAVE 98% STANDARD PROCTOR COMPACTION.
- ALL HDPE PIPE SHALL INCLUDE BEDDING DETAILS PER THE MANUFACTURER ON THE PLANS. INCLUDE THE FOLLOWING NOTES ON THE PROFILE SHEETS FOR HDPE PIPE:
- HIGH-DENSITY POLYETHYLENE PIPE (HDPE) SHALL MEET AASHTO M-294 TYPE "S" WITH AN ANNULAR EXTERIOR AND SMOOTH INTERIOR. PIPE SHALL CONSIST OF A BELL AND SPIGOT JOINT INCORPORATING AN F477 GASKET TO INSURE A LEAK-TIGHT PERFORMANCE. HDPE PIPE SHALL BE BACK FILLED BY CONCURRENTLY APPLYING 8" LIFTS ON EACH SIDE OF THE PIPE USING TWO (2) TAMPS (ONE FOR EACH SIDE). BACKFILL SOIL SHALL CONFORM TO CLASS II, B2 OF THE GEORGIA DEPARTMENT OF TRANSPORTATION STANDARD SPECIFICATIONS FOR CONSTRUCTION OF ROADS AND BRIDGES, CURRENT EDITION. ANY MANUFACTURER'S SPECIFICATIONS FOR HDPE PIPE EXCEEDING THIS REQUIREMENTS SHALL APPLY WHERE APPLICABLE.
- HDPE PIPE MUST CONFORM WITH CURRENT GDOT STANDARDS (STANDARD THERMOPLASTIC PIPE 1039P). ASTM F2848 PIPE IS NOT AN ACCEPTABLE SUBSTITUTION.



STORM STRUCTURE TYPES:		PIPE LEGEND:	
P.DI:	PROPOSED GDOT STD. 1019A TYPE A	HDPE:	HIGH-DENSITY POLYETHYLENE
EX.D.I:	EXISTING DROP INLET	CMP:	CORRUGATED METAL PIPE
P.YI:	PROPOSED GDOT STD. 1019A TYPE B	RCP:	REINFORCED CONCRETE PIPE
P.STCO:	PROPOSED STORM CLEANOUT	DIP:	DUCTILE IRON PIPE



SANITARY SEWER STRUCTURE TYPES:
 SSBC: SANITARY SEWER BUILDING CONNECTION
 SSCO: SANITARY SEWER CLEANOUT
 SSMH: SANITARY SEWER MANHOLE
 SSGT: SANITARY SEWER GREASE TRAP



Rochester & Associates, Inc.
 425 Oak Street N.W. • Gainesville, Georgia 30601
 (770)718-0600 (770)718-9090 Fax • www.rochester-assoc.com

PROFILES - 1
 FOR:
DOLLAR GENERAL WOODSTOCK
 LAND LOTS 682 & 683
 OF THE 21ST SECTION
 CHEROKEE COUNTY, GEORGIA

NO.	DATE	DESCRIPTION	REVISIONS
A	2.11.2021	2ND - SUBMITTAL - COUNTY COMMENTS	

ANY CHANGES OR ALTERATIONS MADE TO THESE CONSTRUCTION DRAWINGS WITHOUT THE SIGNATURE OF THE DESIGNER SHALL BE AT THE USER'S RISK. THE USER SHALL VERIFY ALL DIMENSIONS AND CONDITIONS WITH THIS PROJECT'S ORIGINAL DRAWINGS AND KEEP ON FILE FOR VERIFICATION OF ANY CHANGES.



SHEET
C-4.0
 OF
18
 DATE: 12/30/2020
 SCALE: N.T.S.
 JOB NO.: 2215090.DWG
 DWG NO.: C04ST.dwg
 DRAWN BY: TZE