

| UTILITY LEGEND | |
|------------------------------|---|
| EX. OVERHEAD POWER | EX. SANITARY SEWER LINE (PER AS-BUILT INFO) |
| EX. OVERHEAD TELEPHONE | EX. STORM LINE (PER AS-BUILT INFO) |
| EX. OVERHEAD POWER/TELEPHONE | EX. SANITARY SEWER CLEANOUT (PER AS-BUILT INFO) |
| EX. UNDERGROUND TELEPHONE | EX. WATER VALVE (PER AS-BUILT INFO) |
| EX. UNDERGROUND POWER | P. WATER LINE |
| EX. SANITARY SEWER LINE | P. STORM LINE |
| EX. WATER LINE | P. UNDERGROUND TELEPHONE |
| EX. GAS LINE | P. OVERHEAD TELEPHONE |
| EX. STORM LINE | P. OVERHEAD POWER |
| EX. SANITARY SEWER MANHOLE | P. OVERHEAD POWER/TELEPHONE |
| EX. SANITARY SEWER CLEANOUT | P. UNDERGROUND POWER |
| | P. GAS LINE |

RETAIL BUILDING D
14,408 SQUARE FEET
(EXTERIOR DIMENSIONS
MEASURED AT GROUND LEVEL)
FFE=983.5'

MH
TOP=989.060
INV SE 8" PVC=980.46
INV NW 6" PVC=980.56
INV NE 16" PVC=980.56

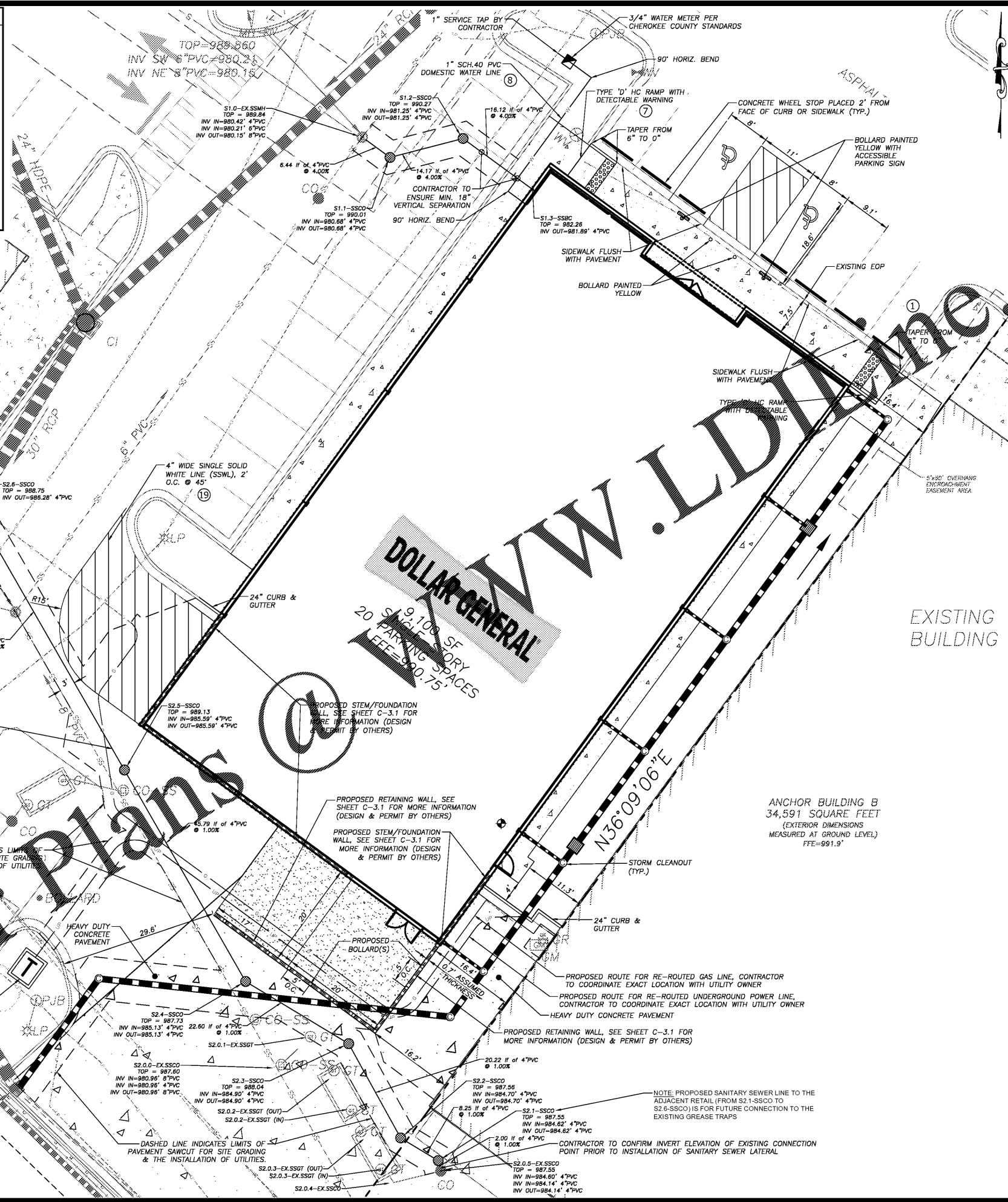
NOTE: PROPOSED SANITARY SEWER LINE TO THE ADJACENT RETAIL (FROM S2.1-SSCO TO S2.6-SSCO) IS FOR FUTURE CONNECTION TO THE EXISTING GREASE TRAPS

EXISTING DUMPSTER PAD TO BE UTILIZED BY DOLLAR GENERAL.

MODULAR BLOCK RETAINING WALL

PROPOSED LOCATION FOR RELOCATED TRANSFORMER. CONTRACTOR TO COORDINATE EXACT LOCATION WITH UTILITY OWNER

TOP=986.28
inv se 30" rcp=975.98
inv nw 30" rcp=975.98



- GENERAL SITE NOTES:**
- PAINTED STANDARD PARKING SPACE AND ISLAND STRIPE COLOR SHALL BE YELLOW FOR ASPHALT PAVEMENT AND CONCRETE PAVEMENT. COLOR FOR PAINTED H.C. ACCESSIBLE PARKING SPACE STRIPES, ACCESSIBLE ISLE STRIPES, AND H.C. SYMBOLS, SHALL BE 'H.C.' BLUE COLOR. BOLLARDS SHALL BE PAINTED YELLOW. PAINT SHALL BE REFLECTIVE TYPE.
 - SIDEWALKS ADJACENT TO BUILDING SLABS SHALL HAVE SEALED ISOLATION JOINTS.
 - PORTLAND CEMENT SIDEWALKS SHALL BE MINIMUM 4" THICK. USE WELDED WIRE FABRIC OR FIBER REINFORCING.
 - CONCRETE SPLASH BLOCKS SHALL BE INSTALLED AT ALL BUILDING DOWNSPOUTS THAT ARE NOT DISCHARGING ON CONCRETE PAVEMENT. DOWNSPOUTS SHALL NOT BE ALLOWED TO DISCHARGE ON CONCRETE SIDEWALKS.
 - SEE SHEET C-6.0 FOR ONSITE PAVEMENT SPECIFICATIONS.
 - RETAINING WALLS GREATER THAN 4' TALL REQUIRE A SEPARATE PERMIT PRIOR TO BEING BUILT.
 - ALL DIMENSIONS ARE TO THE BACK OF CURB UNLESS OTHERWISE SPECIFIED.
 - IT IS THE RESPONSIBILITY OF THE CONTRACTOR TO ENSURE THAT ANY GROUND CONTROL AND/OR BENCHMARKS AS SHOWN HAVE NOT BEEN DISTURBED FROM THEIR ORIGINAL POSITION AND ARE CHECKED AGAINST EXISTING ELEVATIONS TO ENSURE ACCURACY. IF A DISCREPANCY IS DISCOVERED, THE LAND SURVEYOR AND/OR ENGINEER SHOULD BE NOTIFIED IMMEDIATELY AND PRIOR TO ANY CONSTRUCTION ACTIVITY. THIS INFORMATION IS FURNISHED AS A COURTESY AND ROCHESTER & ASSOCIATES, INC. CANNOT ASSUME ANY LIABILITY FOR INACCURATE GROUND CONTROL OR BENCHMARKS RELATED TO THIS PROJECT.

- GENERAL UTILITY NOTES:**
- VERTICAL DEPTH OF ALL DRY AND PRESSURIZED UTILITIES IS UNKNOWN. CONTRACTOR TO NOTIFY OWNER AND ENGINEER IMMEDIATELY IF ANY CONFLICTS ARE FOUND.
 - MAINTAIN 10' HORIZONTAL SEPARATION BETWEEN WATER AND SEWER LINES.
 - ALL CLEANOUTS IN PAVEMENT AREAS ARE TO HAVE A TRAFFIC RATED TOP.
 - ALL PVC PIPE SHALL BE SCHEDULE 40 PVC.
 - ALL PVC LATERALS AND DISTRIBUTION LINES ARE TO BE AT A MINIMUM SLOPE OF 0.25% PER FOOT (2.08%).
 - CLEAN OUTS SHALL BE SPACED NO FURTHER THAN 75 FEET APART.
 - EXISTING WATER WELLS ON SITE MUST BE FILLED BY A LICENSED WELL DRILLER PRIOR TO STARTING CONSTRUCTION.
 - CONTRACTOR SHALL LOCATE, CRUSH AND FILL ANY EXISTING SEPTIC TANKS ON SITE.

SANITARY SEWER STRUCTURE TYPES:

SSBC: SANITARY SEWER BUILDING CONNECTION
SSCO: SANITARY SEWER CLEANOUT
SSMH: SANITARY SEWER MANHOLE
SSGT: SANITARY SEWER GREASE TRAP

Rochester & Associates, Inc.
425 Oak Street N.W. • Gainesville, Georgia 30501
(770)718-0600 (770)718-9090 Fax • www.rochester-assoc.com

SITE & UTILITY DETAIL
FOR:
DOLLAR GENERAL WOODSTOCK
LAND LOTS 682 & 683
OF THE 21ST SECTION
CHEROKEE COUNTY, GEORGIA

| NO. | DATE | DESCRIPTION | REVISIONS |
|-----|-----------|-----------------------------------|-----------|
| A | 2.11.2021 | 2ND - SUBMITTAL - COUNTY COMMENTS | |

ANY CHANGES OR ALTERATIONS MADE TO THESE CONSTRUCTION DRAWINGS WITHOUT THE SIGNATURE OF ROCHESTER & ASSOCIATES, INC. VIOLATES THE SEAL SHOWING AND SHALL BE CONSIDERED UNAUTHORIZED. ANY CHANGES TO THESE DRAWINGS SHALL BE MADE TO THE ORIGINAL DRAWINGS AND KEPT ON FILE FOR VERIFICATION OF ANY CHANGES.

GRAPHIC SCALE: 1" = 20'



SHEET
C-2.2
OF
18

DATE: 12/30/2020
SCALE: 1"=10'
JOB NO.: 0215090.DWG
DWG NO.: 0215090.DWG
DRAWN BY: PZL