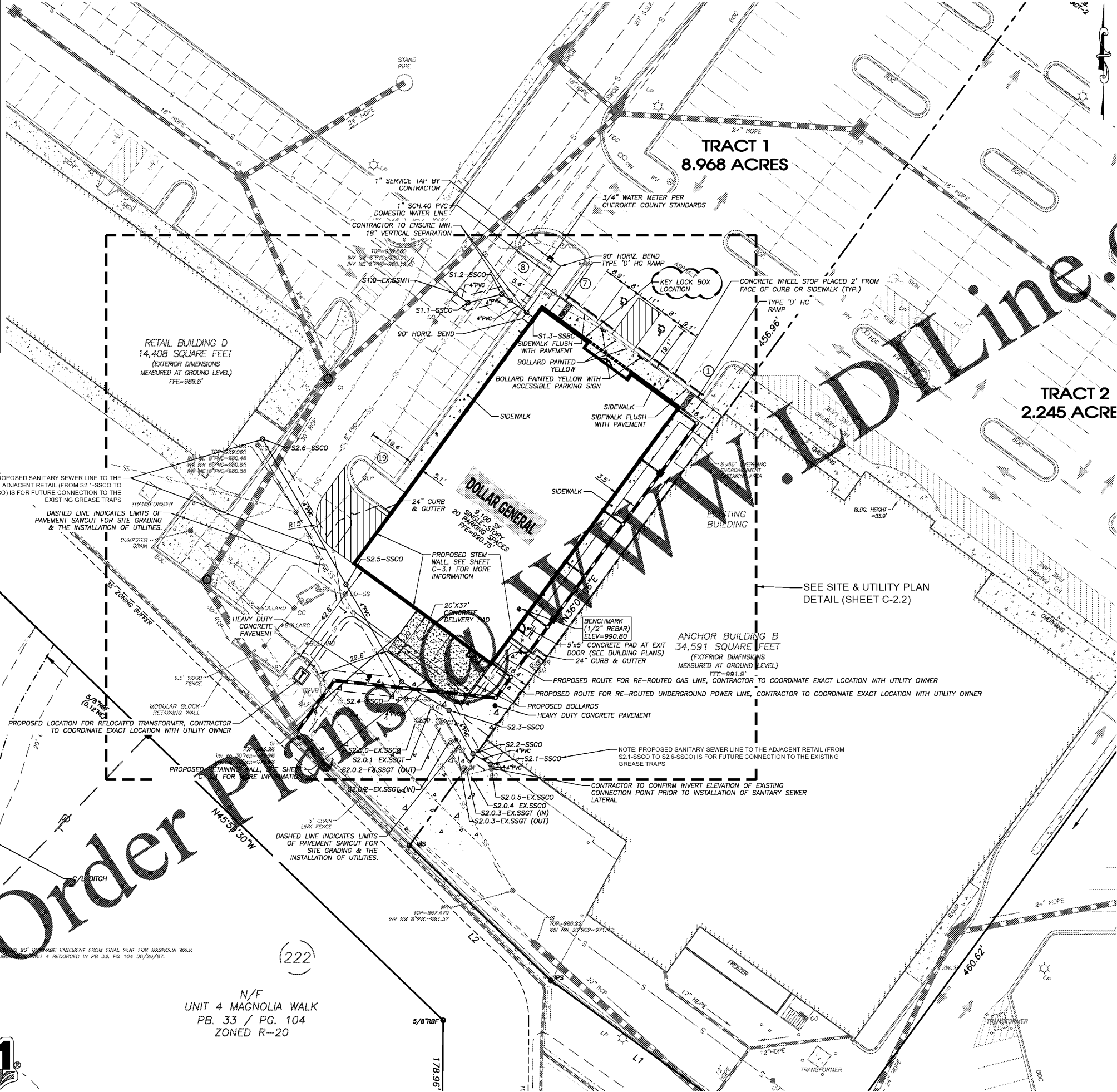


UTILITY LEGEND

EX. OVERHEAD POWER	—○—○—○—
EX. OVERHEAD TELEPHONE	—T—T—T—T—
EX. OVERHEAD POWER/TELEPHONE	—P/T—P/T—P/T—P/T—
EX. UNDERGROUND TELEPHONE	—UC—UC—UC—UC—
EX. UNDERGROUND POWER	—UP—UP—UP—UP—
EX. SANITARY SEWER LINE	—SS—SS—SS—SS—
EX. WATER LINE	—W—W—W—W—
EX. GAS LINE	—G—G—G—G—
EX. STORM LINE	—S—S—S—S—
EX. SANITARY SEWER MANHOLE	●
EX. SANITARY SEWER GREASE TRAP	⊗
EX. SANITARY SEWER CLEANOUT	⊙
EX. WATER VALVE	⊕
EX. SANITARY SEWER LINE (PER AS-BUILT INFO)	—S—
EX. STORM LINE (PER AS-BUILT INFO)	—S—
EX. SANITARY SEWER CLEANOUT (PER AS-BUILT INFO)	⊙
EX. SANITARY SEWER GREASE TRAP (PER AS-BUILT INFO)	⊗
EX. WATER VALVE (PER AS-BUILT INFO)	⊕
P. WATER LINE	—W—
P. STORM LINE	—S—
P. UNDERGROUND TELEPHONE	—UC—
P. OVERHEAD TELEPHONE	—T—
P. OVERHEAD POWER	—P—
P. OVERHEAD POWER/TELEPHONE	—P/T—
P. UNDERGROUND POWER	—UP—
P. GAS LINE	—G—



GENERAL SITE NOTES:

1. PAINTED STANDARD PARKING SPACE AND ISLAND STRIPE COLOR SHALL BE YELLOW FOR ASPHALT PAVEMENT AND CONCRETE PAVEMENT. COLOR FOR PAINTED H.C. ACCESSIBLE PARKING SPACE STRIPES, ACCESSIBLE ISLE STRIPES, AND H.C. SYMBOLS, SHALL BE "H.C." BLUE COLOR. BOLLARDS SHALL BE PAINTED YELLOW. PAINT SHALL BE REFLECTIVE TYPE.
2. SIDEWALKS ADJACENT TO BUILDING SLABS SHALL HAVE SEALED ISOLATION JOINTS.
3. PORTLAND CEMENT SIDEWALKS SHALL BE MINIMUM 4" THICK. USE WELDED WIRE FABRIC OR FIBER REINFORCING.
4. CONCRETE SPLASH BLOCKS SHALL BE INSTALLED AT ALL BUILDING DOWNSPOUTS THAT ARE NOT DISCHARGING ON CONCRETE PAVEMENT. DOWNSPOUTS SHALL NOT BE ALLOWED TO DISCHARGE ON CONCRETE SIDEWALKS.
5. SEE SHEET C-6.0 FOR ONSITE PAVEMENT SPECIFICATIONS.
6. RETAINING WALLS GREATER THAN 4' TALL REQUIRE A SEPARATE PERMIT PRIOR TO BEING BUILT.
7. ALL DIMENSIONS ARE TO THE BACK OF CURB UNLESS OTHERWISE SPECIFIED.
8. IT IS THE RESPONSIBILITY OF THE CONTRACTOR TO ENSURE THAT ANY GROUND CONTROL AND/OR BENCHMARKS AS SHOWN HAVE NOT BEEN DISTURBED FROM THEIR ORIGINAL POSITION AND ARE CHECKED AGAINST EXISTING ELEVATIONS TO ENSURE ACCURACY. IF A DISCREPANCY IS DISCOVERED, THE LAND SURVEYOR AND/OR ENGINEER SHOULD BE NOTIFIED IMMEDIATELY AND PRIOR TO ANY CONSTRUCTION ACTIVITIES. THIS INFORMATION IS FURNISHED AS A COURTESY AND ROCHESTER & ASSOCIATES, INC. CANNOT ASSUME ANY LIABILITY FOR INACCURATE GROUND CONTROL OR BENCHMARKS RELATED TO THIS PROJECT.

GENERAL UTILITY NOTES:

1. VERTICAL DEPTH OF ALL DRY AND PRESSURIZED UTILITIES IS UNKNOWN. CONTRACTOR TO NOTIFY OWNER AND ENGINEER IMMEDIATELY IF ANY DEFLECTS ARE FOUND.
2. MAINTAIN 10' HORIZONTAL SEPARATION BETWEEN WATER AND SEWER LINES.
3. ALL CLEANOUTS IN PAVEMENT AREAS ARE TO HAVE A TRAFFIC RATED TOP.
4. ALL PVC PIPE SHALL BE SCHEDULE 40 PVC.
5. ALL PVC LATERALS AND DISTRIBUTION LINES ARE TO BE AT A MINIMUM SLOPE OF 0.25% PER FOOT (2.08%).
6. CLEAN OUTS SHALL BE SPACED NO FURTHER THAN 75 FEET APART.
7. EXISTING WATER WELLS ON SITE MUST BE FILLED BY A LICENSED WELL DRILLER PRIOR TO STARTING CONSTRUCTION.
8. CONTRACTOR SHALL LOCATE, CRUSH AND FILL ANY EXISTING SEPTIC TANKS ON SITE.

SANITARY SEWER STRUCTURE TYPES:

SSBC:	SANITARY SEWER BUILDING CONNECTION
SSCO:	SANITARY SEWER CLEANOUT
SSMH:	SANITARY SEWER MANHOLE
SSGT:	SANITARY SEWER GREASE TRAP

Rochester & Associates, Inc.
 425 Oak Street N.W. • Gainesville, Georgia 30501
 (770)718-0500 (770)718-9090 Fax • www.rochester-assoc.com

DOLLAR GENERAL WOODSTOCK
 LAND LOTS 682 & 683
 OF THE 21ST SECTION
 CHEROKEE COUNTY, GEORGIA

SITE & UTILITY PLAN FOR:

NO.	DATE	DESCRIPTION	REVISIONS
A	2.11.2021	FINAL - SUBMITTAL - COUNTY COMMENTS	

ANY CHANGES OR ALTERATIONS MADE TO THESE CONSTRUCTION DRAWINGS WITHOUT THE SIGNATURE OF ROCHESTER & ASSOCIATES, INC. VIOLATES THE SEAL SHOWING ON THESE DRAWINGS. ANY CHANGES TO THESE DRAWINGS ARE KEPT ON FILE FOR VERIFICATION OF ANY CHANGES.

GRAPHIC SCALE: 1" = 20'

REGISTERED PROFESSIONAL ENGINEER
 ALLEN MARGAVICH
 2.11.2021

SHEET C-2.1 OF 18
 DATE: 12/30/2020
 SCALE: 1"=20'
 JOB NO.: 0215090.DWG
 DWG NO.: C02ST.dwg
 DRAWN BY: TFL

GEORGIA811
 www.Georgia811.com