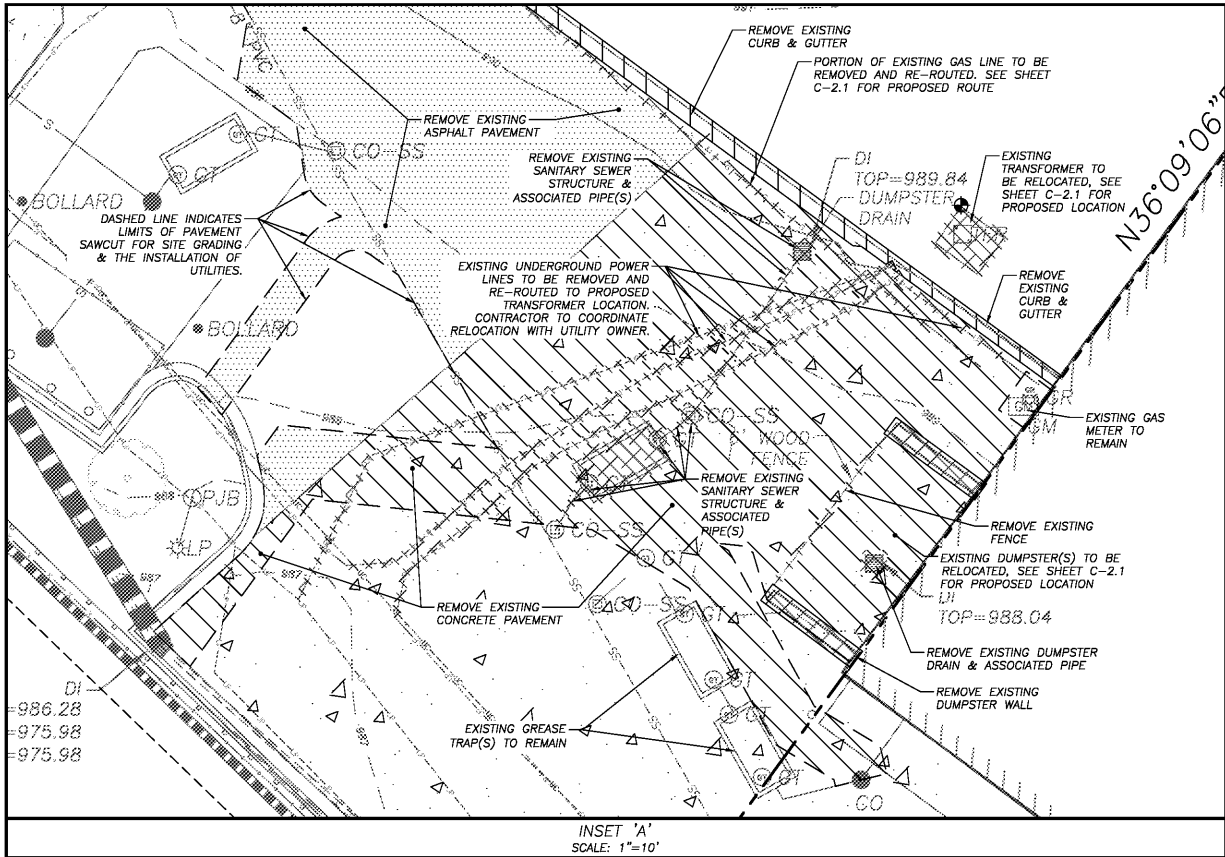
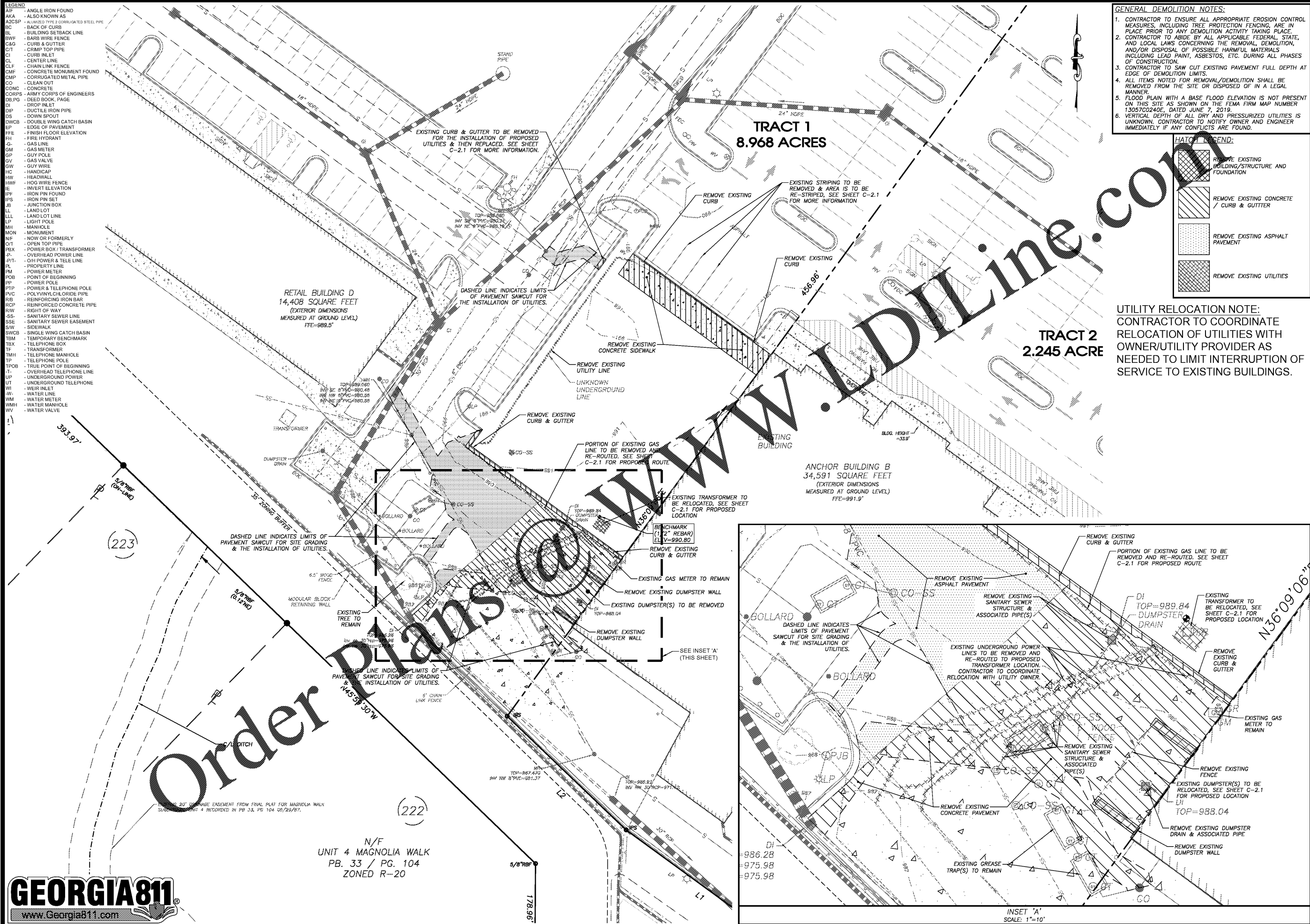


- LEGEND**
- AIF - ANGLE IRON FOUND
 - AKA - ALSO KNOWN
 - ACCSP - ALUMINUM TYPE 2 CORRUGATED STEEL PIPE
 - BC - BACK OF CURB
 - BL - BUILDING SETBACK LINE
 - BWF - BARS WIRE FENCE
 - C&G - CURB & GUTTER
 - CT - CRIMP TOP PIPE
 - CI - CURB INLET
 - CL - CENTER LINE
 - CLF - CHAIN LINK FENCE
 - CMF - CONCRETE MONUMENT FOUND
 - CMP - CORRUGATED METAL PIPE
 - CO - CLEAN OUT
 - CONC - CONCRETE
 - COBNC - ARMY CORPS OF ENGINEERS
 - DB PG - DEED BOOK, PAGE
 - DI - DROP INLET
 - DIP - DUCTILE IRON PIPE
 - DS - DOWN SPOUT
 - DWCB - DOUBLE WING CATCH BASIN
 - EP - EDGE OF PAVEMENT
 - FFE - FINISH FLOOR ELEVATION
 - FH - FIRE HYDRANT
 - G - GAS LINE
 - GM - GAS METER
 - GP - GUY POLE
 - GV - GAS VALVE
 - GW - GUY WIRE
 - HC - HANDICAP
 - HW - HEADWALL
 - HWF - HOG WIRE FENCE
 - IE - INVERT ELEVATION
 - IPF - IRON PIN FOUND
 - IPS - IRON PIN SET
 - JB - JUNCTION BOX
 - LL - LAND LOT
 - LLL - LAND LOT LINE
 - LP - LIGHT POLE
 - M - MANHOLE
 - MON - MONUMENT
 - NF - NOW OR FORMERLY
 - OT - OPEN TOP PIPE
 - PBX - POWER BOX / TRANSFORMER
 - P - OVERHEAD POWER LINE
 - PPT - OIH POWER & TELLER LINE
 - PL - PROPERTY LINE
 - PM - POWER METER
 - PP - POINT OF BEGINNING
 - PP - POWER POLE
 - PTP - POWER & TELEPHONE POLE
 - PVC - POLYVINYLCHLORIDE PIPE
 - RIB - REINFORCING IRON BAR
 - RCP - REINFORCED CONCRETE PIPE
 - RW - RIGHT OF WAY
 - SS - SANITARY SEWER LINE
 - ESSE - SANITARY SEWER EASEMENT
 - SW - SIDEWALK
 - SWCB - SINGLE WING CATCH BASIN
 - TBM - TEMPORARY BENCHMARK
 - TBX - TELEPHONE BOX
 - TF - TRANSFORMER
 - TMH - TELEPHONE MANHOLE
 - TP - TELEPHONE POLE
 - TPOB - TRUE POINT OF BEGINNING
 - T - OVERHEAD TELEPHONE LINE
 - UP - UNDERGROUND POWER
 - UT - UNDERGROUND TELEPHONE
 - WI - WEIR INLET
 - WL - WATER LINE
 - WM - WATER METER
 - WMH - WATER MANHOLE
 - WV - WATER VALVE

- GENERAL DEMOLITION NOTES:**
1. CONTRACTOR TO ENSURE ALL APPROPRIATE EROSION CONTROL MEASURES, INCLUDING TREE PROTECTION FENCING, ARE IN PLACE PRIOR TO ANY DEMOLITION ACTIVITY TAKING PLACE.
 2. CONTRACTOR TO ABIDE BY ALL APPLICABLE FEDERAL, STATE, AND LOCAL LAWS CONCERNING THE REMOVAL, DEMOLITION, AND/OR DISPOSAL OF POSSIBLE HARMFUL MATERIALS INCLUDING LEAD PAINT, ASBESTOS, ETC. DURING ALL PHASES OF CONSTRUCTION.
 3. CONTRACTOR TO SAW CUT EXISTING PAVEMENT FULL DEPTH AT EDGE OF DEMOLITION LIMITS.
 4. ALL ITEMS NOTED FOR REMOVAL/DEMOLITION SHALL BE REMOVED FROM THE SITE OR DISPOSED OF IN A LEGAL MANNER.
 5. FLOOD PLAN WITH A BASE FLOOD ELEVATION IS NOT PRESENT ON THIS SITE AS SHOWN ON THE FEMA FIRM MAP NUMBER 1305700240E, DATED JUNE 7, 2019.
 6. VERTICAL DEPTH OF ALL DRY AND PRESSURIZED UTILITIES IS UNKNOWN. CONTRACTOR TO NOTIFY OWNER AND ENGINEER IMMEDIATELY IF ANY CONFLICTS ARE FOUND.

- HATCH LEGEND:**
- REMOVE EXISTING BUILDING/STRUCTURE AND FOUNDATION
 - REMOVE EXISTING CONCRETE / CURB & GUTTER
 - REMOVE EXISTING ASPHALT PAVEMENT
 - REMOVE EXISTING UTILITIES

UTILITY RELOCATION NOTE:
CONTRACTOR TO COORDINATE RELOCATION OF UTILITIES WITH OWNER/UTILITY PROVIDER AS NEEDED TO LIMIT INTERRUPTION OF SERVICE TO EXISTING BUILDINGS.



Order Plans

N/F
UNIT 4 MAGNOLIA WALK
PB. 33 / PG. 104
ZONED R-20



Rochester & Associates, Inc.
425 Oak Street N.W. • Gainesville, Georgia 30501
(770)718-0600 (770)718-9090 Fax • www.rochester-assoc.com

EXISTING CONDITIONS & DEMOLITION PLAN
FOR
DOLLAR GENERAL WOODSTOCK
LAND LOTS 682 & 683
OF THE 21ST SECTION
CHEROKEE COUNTY, GEORGIA

NO.	DATE	DESCRIPTION	REVISIONS
A	2.11.2021	2ND - SUBMITTAL - COUNTY COMMENTS	

ANY CHANGES OR ALTERATIONS MADE TO THESE CONSTRUCTION DRAWINGS WITHOUT THE SIGNATURE OF THE DESIGN PROFESSIONAL SEALING AND ASSOCIATES, INC. VIOLATES THE SEAL SHOWING WITH THIS PROJECT. ORIGINAL DRAWINGS ARE KEPT ON FILE FOR VERIFICATION OF ANY CHANGES.

GRAPHIC SCALE
1" = 20'
0' 20' 40'



SHEET
C-1.1
OF
18
DATE: 12/30/2020
SCALE: 1"=20'
JOB NO.: 0215090.DWG
DWG NO.: C01S1.DWG
DRAWN BY: TFL