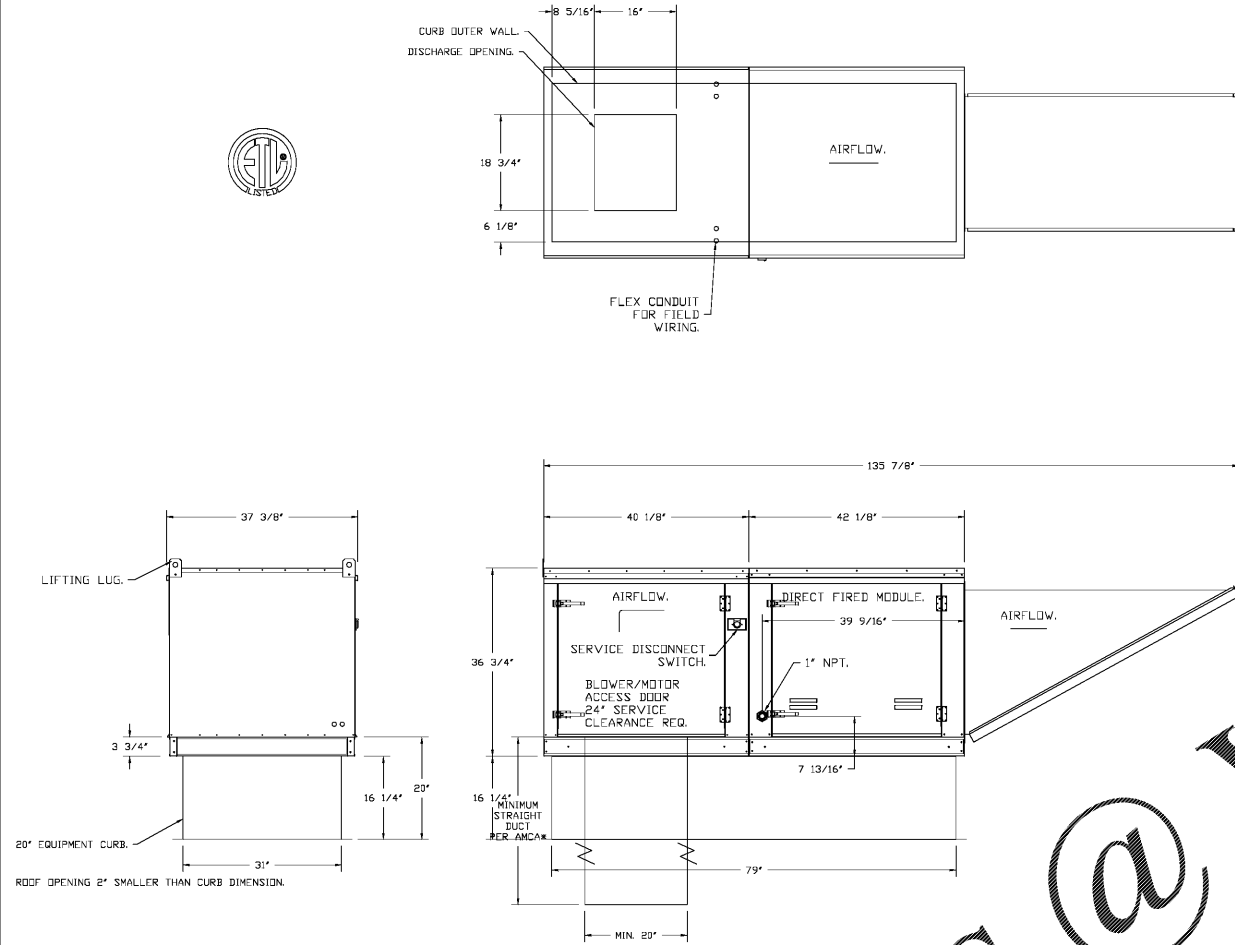


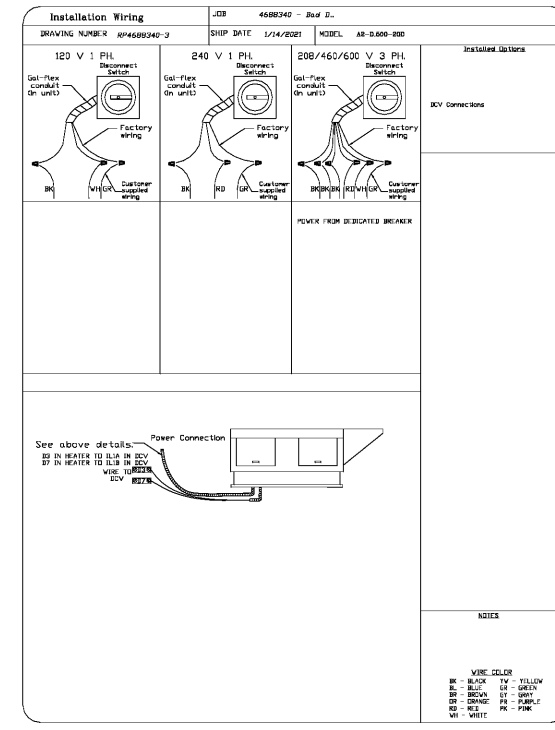
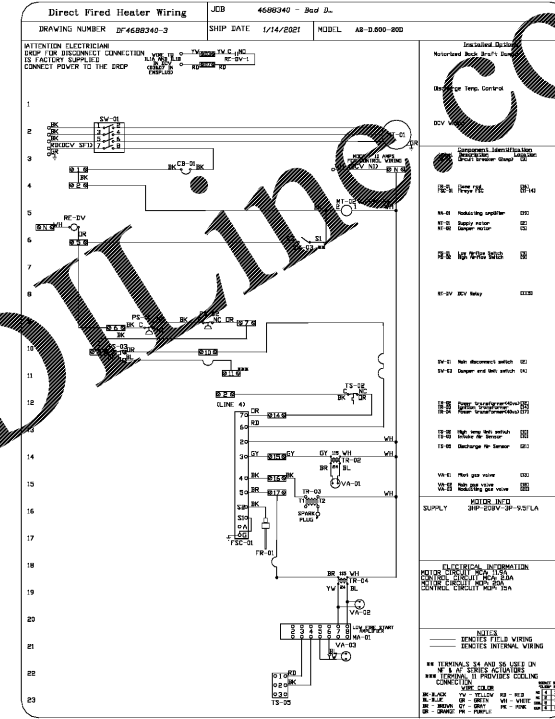
FAN #3 AB-D500-200 - HEATER (MUA-1)
 1. DIRECT GAS FIRE HEATED MAKE-UP AIR UNIT WITH 20" DIRECT DRIVE FAN.
 2. INTAKE HOOD WITH EZ FILTERS.
 3. DOWN DISCHARGE - AIR FLOW RIGHT -> LEFT.
 4. MOTORIZED BACK DRAFT DAMPER 22 7/8" X 24" FOR SIZE 2 STANDARD & MODULAR HEATER UNITS W/EXTENDED SHAFT, STANDARD GALVANIZED CONSTRUCTION, 3/4" REAR FLANGE, LOW LEAKAGE, L120S ACTUATOR INCLUDED.
 5. LOW FIRE START: ALLOWS THE BURNER CIRCUIT TO ENERGIZE WHEN THE MODULATION CONTROL IS IN A LOW FIRE POSITION.
 6. GAS PRESSURE GAUGE: 0-35", 2.5" DIAMETER, 1/4" THREAD SIZE.
 7. GAS PRESSURE GAUGE: -5 TO +15 INCHES WC, 2.5" DIAMETER, 1/4" THREAD SIZE.
 8. SEPARATE 120VAC WIRING PACKAGE FOR MAKE-UP AIR UNITS. OPTION MUST BE SELECTED WHEN MOUNTING VFD IN PREVIEW PANEL OR WITH DCV PACKAGE. PROVIDES SEPARATE 120VAC INPUT TO SUPPLY FAN. THIS 120V SIGNAL MUST BE RUN BY ELECTRICIAN FROM DCV TO MUA SWITCH.
 9. HINGED DOUBLE WALL INSULATED DOOR ASSEMBLY (BURNER/BLOWER SECTION).

SUPPLY SIDE HEATER INFORMATION

WINTER TEMPERATURE = 25°F. TEMP. RISE = 70°F.
 BTUs CALCULATED OFF ACTUAL AIR DENSITY.
 EQUIP BTUs AT ALTITUDE OF 0.0 FT. = 303343.
 INPUT BTUs AT ALTITUDE OF 1079 FT. = 297721.
 OUTPUT BTUs AT ALTITUDE OF 1079 FT. = 297701.
 INPUT BTUs AT ALTITUDE OF 1079 FT. = 317566.

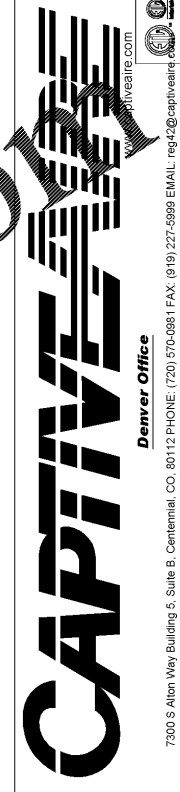


DIRECT FIRED (DF) PROFILE PLATE ASSEMBLY
DIRECT FIRED PROFILE PLATE SPECIFICATIONS:
DESCRIPTION:
 DIRECT FIRED BURNERS SHALL HAVE PATENTED US PATENT NO. 4,666,939, SELF-ADJUSTING PROFILE PLATES DESIGNED TO ENSURE PROPER AIR VELOCITY AND PRESSURE DROP ACROSS THE BURNER. PROFILE PLATES SHALL ALLOW BURNERS TO ACHIEVE CLEAN COMBUSTION BY LIMITING BY-PRODUCT LEVELS TO A MAXIMUM OF 50% OF BURNER MANUFACTURER'S AND 50% OF BURNER SERVICE INDUSTRY. BURNER UNITS SHALL BE COMBUSTED WITH THE SERVICE MOUNTED DOWNSTREAM OF THE BURNER. THIS ARRANGEMENT WILL ENSURE A CONSISTENT AIRFLOW, REGARDLESS OF INLET AIR TEMPERATURE.
APPLICATION:
 SPRING LOADED BURNER PROFILE PLATES ARE ENGINEERED TO AUTOMATICALLY REACT TO THE MOMENTUM OF A FRESH AIR STREAM, WITHOUT THE NEED FOR ANY MOTORS OR ACTUATORS TO MECHANICALLY ADJUST THEM WITH THIS FEATURE, ALL OF UNITS ARE DESIGNED FOR REMAN CONTROL VENTILATION (RCV) REQUIREMENTS.
CERTIFICATIONS:
 ALL PROFILE PLATE ASSEMBLIES SHALL BE INCLUDED IN THE DF UNITS ETL LISTING AND COMPLY WITH COMBINED SAFETY STANDARDS ANSI Z89.4 AND CSA 3.7 (NON-REGULATING IF HEATED) AND ANSI Z89.1 (NON-REGULATING IF HEATED).
GENERAL CONSTRUCTION:
 -PROFILE PLATES SHALL BE FORMED FROM G90 GALVANIZED STEEL.
 -PROFILE PLATES SHALL VARY IN SIZE PER UNIT.
 -PROFILE PLATES SHALL BE MOUNTED ALONG THE SAME PLANE AS THE DISCHARGE OF THE BURNER.
 -DESIGN SHALL INCORPORATE PROPERLY TORQUED, PERMANENTLY MOUNTED SPRING HINGES.
 -SPRING HINGES SHALL BE MADE FROM PLATE STEEL.



REVISIONS

NO.	DESCRIPTION	DATE
1		
2		
3		
4		



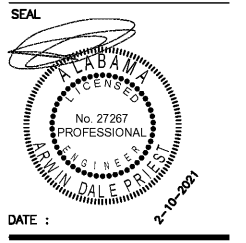
Bad Daddy's - Eastchase, Montgomery, GA
 Eastchase,
 Montgomery, AL, 36117

DATE: 1/14/2021
DWG.#: 4688340
DRAWN BY: MAR-42
SCALE: 3/4" = 1'-0"
MASTER DRAWING

SHEET NO.
 5

Consultant:
ARWIN PRIEST P.E., P.Eng.
 MECHANICAL * ENGINEER * ELECTRICAL
 242 MOUNTAIN CLOUD CIRCLE
 HIGHLANDS RANCH, CO 80126
 (303) 898-2664 pc3744@gmail.com

5280Engineering
 www.DesignMEP.com
 720-320-7744 rpg@5280engineering.com



GOOD TIMES RESTAURANTS, INC.
 141 Union Blvd, Suite 400
 Lakewood, CO 80228
 tel: (303) 384-1430

BAD DADDY'S BURGER BAR
 "EASTCHASE"
 MONTGOMERY, AL 36117

Issue Record:
 04.23.2019 FOR PLAN REVIEW
 02.10.2021 TO GO REVS

Drawn:
 DRAWN BY: E Long
Checked:
 CHECKED BY: R Bank
Project No.:
 PROJECT#: 2019-029
Customer:
 CAPTIVE AIRE HOOD DESIGN

THESE DRAWINGS WERE OBTAINED FROM CAPTIVE AIRE. VERIFY LATEST DRAWINGS PRIOR TO ORDERING EQMT

