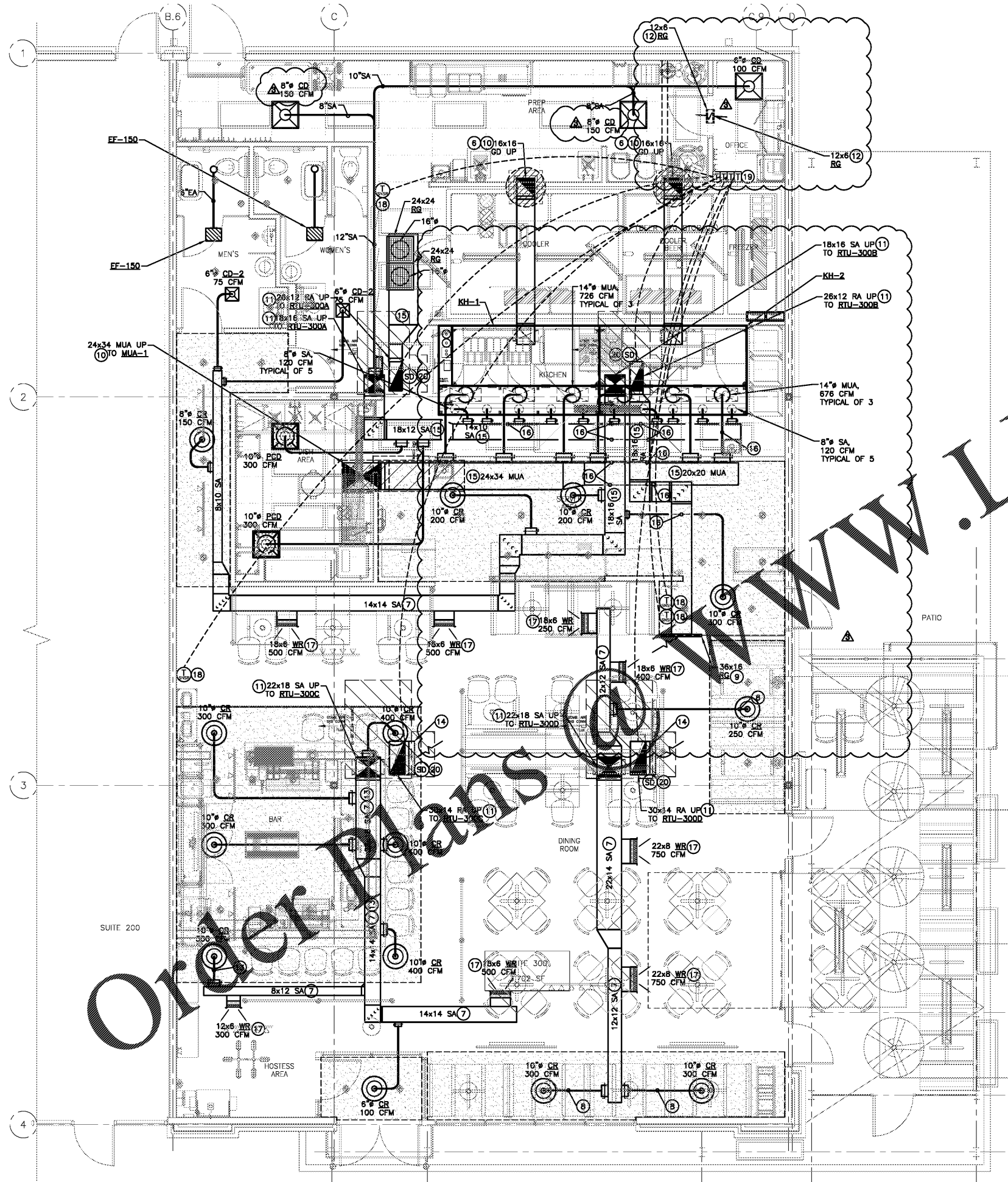


Client: Ethos Architecture - John Sponseller 303-374-9896; 303-815-0161(cell); jspenseller@ethos-architecture.com

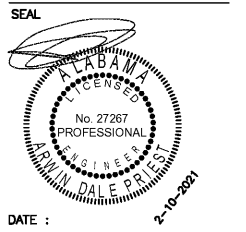


MECHANICAL SHEET NOTES

- Prior to estimating costs/ordering equipment: Verify final location of rooftop equipment with Landlord and Structural Engineer. Notify Mechanical Engineer if proposed roof openings/duct riser locations as shown on sheet M-2 conflict with truss layout/roof structure.
- RTU'S BY LANDLORD: Verify make and model, cooling capacity, supply air CFM, electrical. Verify each unit is provided with thermostat controller and duct smoke detector.
- Route exhaust duct to terminate min 10ft from OSA intakes.
- Electronically interlock MUA-1, 1911-300A, and RTU-300D fans "ON" / KEF-1 / KEF-2. Contact Accurex/Truair to procure hood design sheets regarding fan interlock locations on hood control panel.
- Min 10' clear radius between OSA intakes and exhaust duct terminations, flues of adjacent units, flueing vents. Provide rates/cleanout for grease exhaust duct per code. Verify clearance requirements to combustibles with Mfr.
- Provide Ductmate or equal exposed rectangular duct with flanged connections where duct is exposed. Where duct run permits - space flanged joints 5'-6" apart on center. Prior to ordering materials: Verify 13ft min from bottom of duct to finished floor with Architect. Do not route duct directly below lights. Line duct internally with R6 insulation. Increase sheet metal accordingly; duct sizes noted on plan are inside, clear dimensions.
- Route SA duct within soffit space, verify height AFF prior to ordering materials.
- Locate return grille high on wall/bulkhead, verify with Architect prior to ordering materials.
- Provide smooth transition up to rooftop equipment. Verify ductwork will not conflict with roof trusses prior to ordering materials.
- Connect new ductwork to risers from existing RTU; provide smooth transition. Verify ductwork will not conflict with roof trusses prior to ordering materials.
- Provide transfer opening above door with return grilles on each side of wall.
- Route duct above cloud ceiling. Verify clearances to roof structure prior to ordering materials.
- Provide elbow in RA. Cover open end with 1/2" galv. mesh. Line duct with 1" acoustical insulation.
- Ductwork above lay-in ceiling in-between joists or below bottom of joist. Prior to fabrication, verify clearances, and space for duct crossings. Insulate supply duct to R-5 below roof insulation where above ceiling (none required for exposed ductwork, unless where noted otherwise).
- Route duct underneath adjacent ductwork. Verify heights and clearances, and notify Engineer of conflicts prior to ordering materials.
- WALL REGISTER: Provide 8 inch duct extension off of SA trunk for wall register fitting. Duct extension dimensions are same as WR size stated on plan. See Detail 3, M-1.
- Provide remote thermostat sensor and necessary wiring. Locate remote sensor 72" AFF as shown on plan. Verify no extraneous heat sources are located near the sensor. Route wiring within conduit. Do not locate sensor near or above sources of heat, in direct sunlight, or in immediate path of supply air from ceiling diffuser.
- Locate Owner provided/existing thermostat controller per Architectural Elevations.
- Verify existing or provide ionized smoke detector in RA duct. Fan shall shut off upon detection of smoke per code.

Consultant:
ARWIN PRIEST P.E., P.Eng.
MECHANICAL * ENGINEER * ELECTRICAL
242 MOUNTAIN CLOUD CIRCLE
HIGHLANDS RANCH, CO 80126
(303) 898-2664 pc3744@gmail.com

5280Engineering
www.DesignMEP.com
720-320-7744 reg@5280engineering.com



GOOD TIMES RESTAURANTS, INC.
141 Union Blvd, Suite 400
Lakewood, CO 80228
tel: (303) 384-1430

BAD DADDY'S BURGER BAR
"EASTCHASE"
MONTGOMERY, AL 36117

Issue Record:
04.23.2019 FOR PLAN REVIEW

Drawn:
DRAWN BY: E Long
Checked:
CHECKED BY: R Blank
Project No.
PROJECT#: 2019-029

MECHANICAL:
FLOOR PLAN, SHEET NOTES

MECHANICAL FLOOR PLAN
SCALE: 1/4" = 1'-0"