

GENERAL NOTES:

1. DINING/BAR CEILINGS: PAINT EXPOSED DINING CEILING AREAS AT DINING PT-1, UNLESS NOTED OTHERWISE.
2. BATHROOM CEILINGS: PAINT BATHROOM CEILINGS PT-2.
3. ALL LAYIN CEILINGS TO BE PROVIDED WITH VINYL FACED CEILING TILE (ACT-1).
4. DINING DUCTWORK DIFFUSERS TO BE MILL ALUMINUM FINISH, DO NOT PAINT.

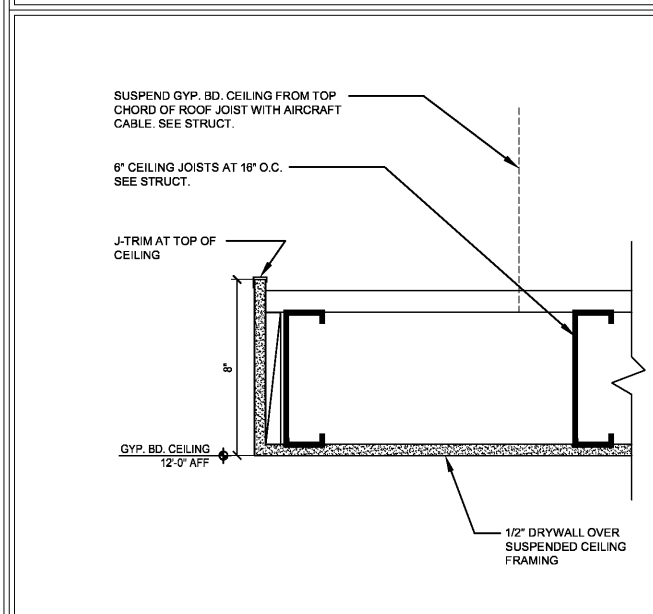
KEY NOTES:

1. SOFFIT OR WALL MOUNTED TV.
2. HEAVY DASHED LINE INDICATES SOFFIT THAT RUNS UP TO ROOF DECK.
3. WALKIN BOX LIGHTS BY LIGHTING SUPPLIER. GC TO INSTALL.
4. TV MOUNTED ON METAL SCREEN.
5. HANG TRACK LIGHTS FROM TRAPEZE AT 12'-0" IN OPEN DINING CEILING.
6. HANG 'A' PENDANT FIXTURE FROM UNISTRUT UNDER GARAGE DOOR.
7. INSTALL TECTUM BOARD TO BOTTOM OF ROOF DECK BETWEEN JOISTS, TYP. AT ALL OPEN CEILING AREAS OF DINING. GC TO PROVIDE AS SEPARATE LINE ITEM IN BID. PART TO POSITIVE FACES OF PANELS PT-1A.
8. PROVIDE HIGH LAYIN CEILING OVER MOP SINK AREA, LOCATE CEILING AS HIGH AS POSSIBLE BELOW ROOF STRUCTURE TO ALLOW MAXIMUM CLEARANCE FOR HOT WATER WATER INSTALLATION & SERVICING.
9. CEILING FAN: MINKA WIRE, 150MM, 552-CR6, OIL RUBBED BRONZE FINISH, SEE ELEC FOR LAMPING.
10. STRING LIGHTS @ 12" WELD STEEL RINGS TO PERIMETER STEEL BEAMS TO PULL SS SUPPORT WIRE.

LIGHTING SCHEDULE (ABBREV.): SEE A600 FOR COMPLETE SCHEDULE

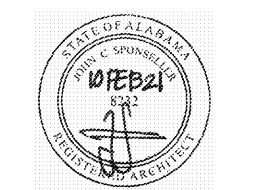
LIGHTING SCHEDULE

SYMBOL	DESCRIPTION	MANUFACTURER	MODEL
A	PENDANT LIGHT, PUBLIC AREAS, DIMMABLE, LED	HI-LITE MFG.	FIXTURE: H-16116-96-CB8-91 LAMP: 9 WATT LED, GU-24 BAS
B	3" RECESSED LIGHT, DIMMABLE U.N.O., LED	CSL	FIXTURE: EDL-NC-WW-3, EDL-1 LAMP: 2700K COLOR TEMPERA
C	TRACK LIGHT, LED, DIMMABLE	JUNO LIGHTING GROUP	FIXTURE: RL541BL, TRACK: R4I LAMP: 12W LED, 2700K COLOR
D	DECORATIVE PENDANT CHANDELIER, DIMMABLE, LED	HI-LITE MFG.	FIXTURE: HMCUGS-65-96-FR-X LAMP: 9 WATT LED, GU-24 BAS
E	WALL SCONCE, LED	HI-LITE MFG.	FIXTURE: H-CGU-HB-96-FR LAMP: SATCO 11A19/OMNILED
F	2X4 RECESSED FLAT PANEL LED FIXTURE (KITCHEN)	BARRON LTG.	FIXTURE: TRACE LITE-LP24-47-
F2	2X2 RECESSED FLAT PANEL LED FIXTURE (KITCHEN)	BARRON LTG.	FIXTURE: TRACE LITE-LP22-40-
G	VANITY LIGHT (BATHROOMS), DIMMABLE, LED	HI-LITE MFG.	FIXTURE: H-CGU-F2F-96 LAMP: 9 WATT LED, GU-24 BAS
H	EXTERIOR LIGHT (2 BULB)	HI-LITE MFG.	FIXTURE: H-LCGU-W2B-96-CLR LAMP: CFL
H1	EXTERIOR LIGHT (1 BULB)	HI-LITE MFG.	FIXTURE: H-CGU-1B-96-CLR LAMP: CFL
K	PENDANT LIGHT (BAR), DIMMABLE, LED	HI-LITE MFG.	FIXTURE: H-CGU-10-FR-CB8-91 LAMP: 9 WATT LED, GU-24 BAS
LB	LED TAPE LIGHT (UNDER BAR COUNTER, BARTENDER SIDE)	LED INSPIRATIONS	FIXTURE: NU-V2-2700-SB, MOU
LC	LED TAPE LIGHT (UNDER BAR COUNTER, CUSTOMER SIDE)	LED INSPIRATIONS	FIXTURE: NU-V2-2700-SB, MOU
O	PATIO DECORATIVE FESTOON LIGHT, (LED)	AMERICAN LIGHTING	FIXTURE: LS-1-15-BK-330 LAMP: 1W LED - PG40-E17-WW



2 DETAIL: CEILING AT BAR
3" = 1'-0" NOTE:

CONSULTANT:
JOHN SPONSELLER, ARCHITECT
8025 W. 25TH PL.
LAKEWOOD, CO 80214
TEL: (303) 815-0161



GOOD TIMES RESTAURANTS, INC.
141 Union Blvd., Suite 400
Lakewood, CO 80228
303-384-1430

BAD DADDY'S BURGER BAR
"EASTCHASE"
THE VENUE EASTCHASE
NWC EASTCHASE PKWY &
EASTCHASE LN.
MONTGOMERY, AL 36117

Issue Record:

4.23.2019	FOR PLAN REVIEW

Revisions:

5.6.2019	WALKIN BOX
7.1.2019	CANOPY REVS
2.10.2021	TO GO REVS

Drawn:
DRAWN BY: JS, KC

Checked:
CHECKED BY: JS

Project No.
PROJECT#: 19-207

Contact:

CEILING PLAN

A140
Date of Last Print:
2.10.2021