

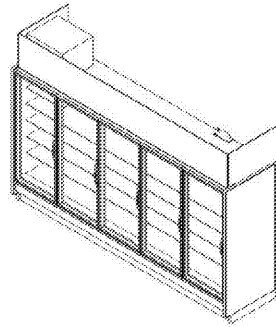
**REACH-IN FREEZER/COOLER UNIT**

**JNRBHS A**

High Narrow Reach-In Self-Contained Merchandiser  
1, 2, 3, 4, 5 Door & 4' (Dairy/Deli/Beverage)

**GENERAL NOTES:**

- Lighting Controls and Anti-Sweat Heat Controls are Standard
- Option 1: 200W Fluorescent
- Occupancy Sensor Based Lighting Controls (DS005) & High-Intensity LED provided unless otherwise specified
- Option 2: LED Linear Fluorescent
- Lighting Controls should be Occupancy Sensor Based on a minimum 8 Hour ON Schedule. Customer provided A/B Heat Controls should be set to 30% minimum off time at 75°F/20°C
- 1 Door & 4' case lengths available in JNRV Reach-In condensing unit configuration
- 2, 3, 4 & 5 door lengths available in JNRV Reach-In condensing unit configuration



**SHIPPING WEIGHT**

Door	Weight
1 Door	110
2 Door	130
3 Door	150
4 Door	170
5 Door	190

Part No.	Rev.	Rev. No.	Rev. Title
10-16-18	1	1	DATA UPDATE
10-16-19	1	1	DATA UPDATE
10-16-19	1	1	END USER UPDATE

**REACH-IN FREEZER/COOLER SHEET 1 OF 8**

**JNRBHS A (R404A)**

High Narrow Reach-In Self-Contained Merchandiser  
1, 2, 3, 4, 5 Door & 4' (Dairy/Deli/Beverage)

**SYSTEM REQUIREMENT (R404A REFRIGERANT)**

Case Length	Volts	Phase	Frequency	Minimum Ampacity (A/C)	Maximum Overcurrent Protection (MOP)
1 Door	208	1	60	15.0	20.0
2 Door	208	1	60	18.0	25.0
3 Door	208	1	60	21.0	30.0
4 Door	208	1	60	24.0	35.0
5 Door	208	1	60	27.0	40.0

\* 24 Hour Energy Index includes evaporator fans, condenser fans, and condenser heat & condensing unit

**OVERSIZED AND CONTROL SETTINGS (R404A REFRIGERANT)**

Case Length	Superheat	Sub Cool	Sub. P.P.	Sub. P.P.	Sub. P.P.	Sub. P.P.
1 Door	1.5	1.5	1.5	1.5	1.5	1.5
2 Door	1.5	1.5	1.5	1.5	1.5	1.5
3 Door	1.5	1.5	1.5	1.5	1.5	1.5
4 Door	1.5	1.5	1.5	1.5	1.5	1.5
5 Door	1.5	1.5	1.5	1.5	1.5	1.5

**CONDENSING UNIT DATA (R404A REFRIGERANT)**

Case Length	Volts	Phase	Frequency	Management	Running Load Amps (RLA)	Locked Rotor Amps (LRA)	Refrigerant	200°C
1 Door	208	1	60	1.0	4.2	10.0	R404A	2.2
2 Door	208	1	60	1.0	5.0	12.0	R404A	2.7
3 Door	208	1	60	1.0	5.8	14.0	R404A	3.2
4 Door	208	1	60	1.0	6.6	16.0	R404A	3.7
5 Door	208	1	60	1.0	7.4	18.0	R404A	4.2

**DEFROST CONTROLS (R404A REFRIGERANT)**

Case Length	Defrost	Time	Temp. (°F)
1 Door	1	10	32
2 Door	1	10	32
3 Door	1	10	32
4 Door	1	10	32
5 Door	1	10	32

**DEFROST SCHEDULE (R404A REFRIGERANT)**

Defrost	Time
1 Door	10:00 - 10:15
2 Door	10:00 - 10:15
3 Door	10:00 - 10:15
4 Door	10:00 - 10:15
5 Door	10:00 - 10:15

**NOTES:**

- \* "1" indicates that this feature is not an option on this case model
- \* Locked discharge air velocity represents the average velocity at the case or cabinet
- \* Temperature and defrost settings listed below are recommended start-up settings. Final operational settings may need to be adjusted for the space conditions, in which the case operates
- \* The recommended evaporator temperature may need to be adjusted based on system basis, store conditions, etc. The minimum recommended evaporator temperature is 4°F/20°C for the listed evaporator temperatures
- \* The 24 Hour Energy Index is based upon 480V, 200W per condenser with high-intensity LED lights, occupancy sensor based (DS005) lighting control and door panel based anti-sweat heat controls



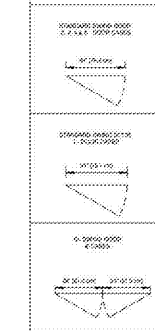
Part No.	Rev.	Rev. No.	Rev. Title
10-16-18	1	1	DATA UPDATE
10-16-19	1	1	END USER UPDATE

**REACH-IN FREEZER/COOLER SHEET 2 OF 8**

**JNRBHS A**

High Narrow Reach-In Self-Contained Merchandiser  
1, 2, 3, 4, 5 Door & 4' (Dairy/Deli/Beverage)

**DOOR OPTIONS**



**FRONT OPTIONS**

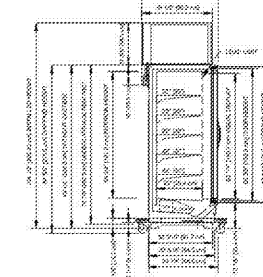


Part No.	Rev.	Rev. No.	Rev. Title
10-16-18	1	1	DATA UPDATE
10-16-19	1	1	END USER UPDATE

**REACH-IN FREEZER/COOLER SHEET 3 OF 8**

**JNRBHS A**

High Narrow Reach-In Self-Contained Merchandiser  
1, 2, 3, 4, 5 Door & 4' (Dairy/Deli/Beverage)



**CONDENSING UNIT DATA (R404A REFRIGERANT)**

Case Length	Volts	Phase	Frequency	Management	Running Load Amps (RLA)	Locked Rotor Amps (LRA)	Refrigerant	200°C
1 Door	208	1	60	1.0	4.2	10.0	R404A	2.2
2 Door	208	1	60	1.0	5.0	12.0	R404A	2.7
3 Door	208	1	60	1.0	5.8	14.0	R404A	3.2
4 Door	208	1	60	1.0	6.6	16.0	R404A	3.7
5 Door	208	1	60	1.0	7.4	18.0	R404A	4.2

**NOTES:**

- \* 120V/1P/1Ø/60Hz
- \* RECOMMENDED STUD-UP CENTERS ARE FOR ELECTRICAL AND HUB DRAINS
- \* Standard Base Frame
- \* Case for storage use requires both shipping undercoils removed
- \* 2" Sliding brackets (standard) & 2.25" slots lower doors cabinet for 1" level base and install
- \* Door top step recess
- \* Each end approximately 1" to case height, 1/2" to case back & 1" to case front



Part No.	Rev.	Rev. No.	Rev. Title
10-16-18	1	1	DATA UPDATE
10-16-19	1	1	END USER UPDATE

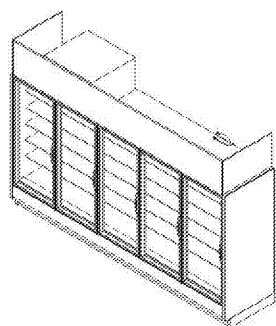
**REACH-IN FREEZER/COOLER SHEET 4 OF 8**

**JNRZHS A**

High Narrow Reach-In Self-Contained Merchandiser  
2, 3, 4 & 5 Door (Frozen Food)

**GENERAL NOTES:**

- Lighting Controls and Anti-Sweat Heat Controls are Required
- Option 1: 200W Fluorescent
- Occupancy Sensor Based Lighting Controls (DS005) & High-Intensity LED provided unless otherwise specified
- Option 2: LED Linear Fluorescent
- Lighting Controls should be Occupancy Sensor Based on a minimum 8 Hour ON Schedule. Customer provided A/B Heat Controls should be set to 30% minimum off time at 75°F/20°C
- \* 2, 3, 4 & 5 door case lengths available in JNRV Reach-In condensing unit configuration



**SHIPPING WEIGHT**

Door	Weight
2 Door	130
3 Door	150
4 Door	170
5 Door	190

Part No.	Rev.	Rev. No.	Rev. Title
10-16-18	1	1	DATA UPDATE
10-16-19	1	1	DATA UPDATE

**REACH-IN FREEZER/COOLER SHEET 5 OF 8**

**JNRZHS A (R404A)**

High Narrow Reach-In Self-Contained Merchandiser  
2, 3, 4 & 5 Door (Frozen Food)

**SYSTEM REQUIREMENT (R404A)**

Case Length	Volts	Phase	Frequency	Minimum Ampacity (A/C)	Maximum Overcurrent Protection (MOP)
2 Door	208	1	60	15.0	20.0
3 Door	208	1	60	18.0	25.0
4 Door	208	1	60	21.0	30.0
5 Door	208	1	60	24.0	35.0

\* 24 Hour Energy Index includes evaporator fans, condenser fans, and condensing unit

**OVERSIZED AND CONTROL SETTINGS (R404A)**

Case Length	Superheat	Sub Cool	Sub. P.P.	Sub. P.P.	Sub. P.P.	Sub. P.P.
2 Door	1.5	1.5	1.5	1.5	1.5	1.5
3 Door	1.5	1.5	1.5	1.5	1.5	1.5
4 Door	1.5	1.5	1.5	1.5	1.5	1.5
5 Door	1.5	1.5	1.5	1.5	1.5	1.5

**CONDENSING UNIT DATA (R404A)**

Case Length	Volts	Phase	Frequency	Management	Running Load Amps (RLA)	Locked Rotor Amps (LRA)	Refrigerant	200°C
2 Door	208	1	60	1.0	5.0	12.0	R404A	2.7
3 Door	208	1	60	1.0	5.8	14.0	R404A	3.2
4 Door	208	1	60	1.0	6.6	16.0	R404A	3.7
5 Door	208	1	60	1.0	7.4	18.0	R404A	4.2

**DEFROST CONTROLS (R404A)**

Case Length	Defrost	Time	Temp. (°F)
2 Door	1	10	32
3 Door	1	10	32
4 Door	1	10	32
5 Door	1	10	32

**DEFROST SCHEDULE (R404A)**

Defrost	Time
2 Door	10:00 - 10:15
3 Door	10:00 - 10:15
4 Door	10:00 - 10:15
5 Door	10:00 - 10:15

**NOTES:**

- \* "1" indicates that this feature is not an option on this case model
- \* Locked discharge air velocity represents the average velocity at the case or cabinet
- \* Temperature and defrost settings listed below are recommended start-up settings. Final operational settings may need to be adjusted for the space conditions, in which the case operates
- \* The recommended evaporator temperature may need to be adjusted based on system basis, store conditions, etc. The minimum recommended evaporator temperature is 4°F/20°C for the listed evaporator temperatures
- \* The 24 Hour Energy Index is based upon 480V, 200W per condenser with high-intensity LED lights, occupancy sensor based (DS005) lighting control and door panel based anti-sweat heat controls



Part No.	Rev.	Rev. No.	Rev. Title
10-16-18	1	1	DATA UPDATE
10-16-19	1	1	DATA UPDATE

**REACH-IN FREEZER/COOLER SHEET 6 OF 8**

**JNRZHS A**

High Narrow Reach-In Self-Contained Merchandiser  
2, 3, 4 & 5 Door (Frozen Food)

**DOOR OPTIONS**



**FRONT OPTIONS**

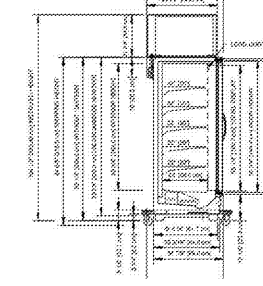


Part No.	Rev.	Rev. No.	Rev. Title
10-16-18	1	1	END USER UPDATE
10-16-19	1	1	DATA UPDATE

**REACH-IN FREEZER/COOLER SHEET 7 OF 8**

**JNRZHS A**

High Narrow Reach-In Self-Contained Merchandiser  
2, 3, 4 & 5 Door (Frozen Food)



**CONDENSING UNIT DATA (R404A REFRIGERANT)**

Case Length	Volts	Phase	Frequency	Management	Running Load Amps (RLA)	Locked Rotor Amps (LRA)	Refrigerant	200°C
2 Door	208	1	60	1.0	5.0	12.0	R404A	2.7
3 Door	208	1	60	1.0	5.8	14.0	R404A	3.2
4 Door	208	1	60	1.0	6.6	16.0	R404A	3.7
5 Door	208	1	60	1.0	7.4	18.0	R404A	4.2

**NOTES:**

- \* 120V/1P/1Ø/60Hz
- \* RECOMMENDED STUD-UP CENTERS ARE FOR ELECTRICAL AND HUB DRAINS
- \* Standard Base Frame
- \* Case for storage use requires both shipping undercoils removed
- \* 2" Sliding brackets (standard) & 2.25" slots lower doors cabinet for 1" level base and install
- \* Door top step recess
- \* Each end approximately 1" to case height, 1/2" to case back & 1" to case front

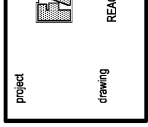
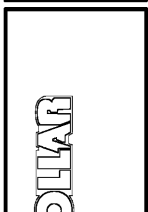
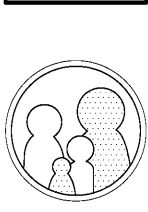
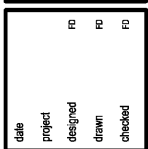


Part No.	Rev.	Rev. No.	Rev. Title
10-16-18	1	1	END USER UPDATE
10-16-19	1	1	DATA UPDATE

**REACH-IN FREEZER/COOLER SHEET 8 OF 8**

Order Plans @

WWW.DOLLAR



FOR REFERENCE ONLY

FAMILY DOLLAR  
REACH-IN UNITS DETAILS AND SPECIFICATIONS

project drawing

sheet  
**DS1**