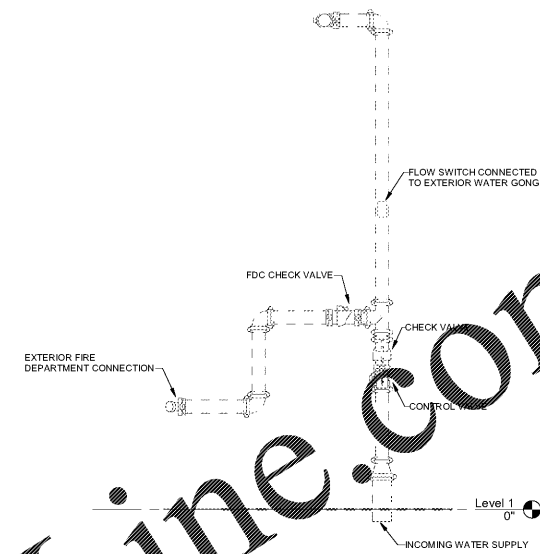
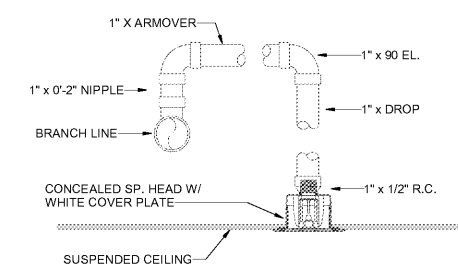


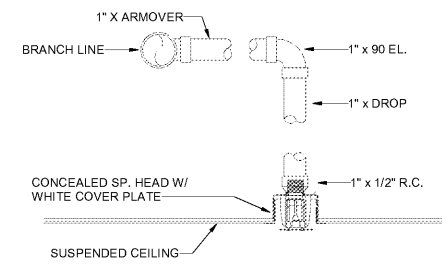
Order Plans @ www.LDILine.com



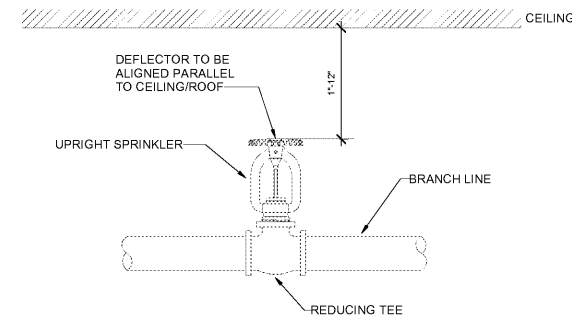
1 EXISTING SPRINKLER RISER
1/2" = 1'-0"



2 TYPICAL CONCEALED PENDENT SPRINKLER
NOT TO SCALE



3 TYPICAL CONCEALED PENDENT SPRINKLER
NOT TO SCALE



4 DETAIL - TYPICAL UPRIGHT SPRINKLER
NOT TO SCALE

ENGINEERS
 ARCHITECTS
 PLANNERS
 SCIENTISTS
 CONSTRUCTION MANAGERS
 1015 WILSON BLVD. SUITE 200
 FORT WORTH, TX 76102
 TEL: (817) 795-8006
KCI
 TECHNOLOGIES

| mark | date | by | description |
|------|------|----|-------------|
| | | | |
| | | | |

| date | project | designed | drawn | checked |
|------------|---------|----------|-------|---------|
| 02/04/2021 | 211032 | MCF | MCF | CDK |



RRMM ARCHITECTS, PC
 Robert S. Berz, Jr., Architect
 Duane M. Harver, Architect

1317 Executive Blvd, Suite 200
 Chesapeake, VA 23320
 (757) 622-2828 / fax (757) 622-8883



| project | sheet |
|-------------------------------|--------|
| FORMER WALGREENS, FDS #797103 | FP-501 |

LDI
FORMER WALGREENS, FDS #797103
 COCHRAN, GA
 SPRINKLER DETAILS

| project | sheet |
|-------------------------------|--------|
| FORMER WALGREENS, FDS #797103 | FP-501 |

sheet
FP-501