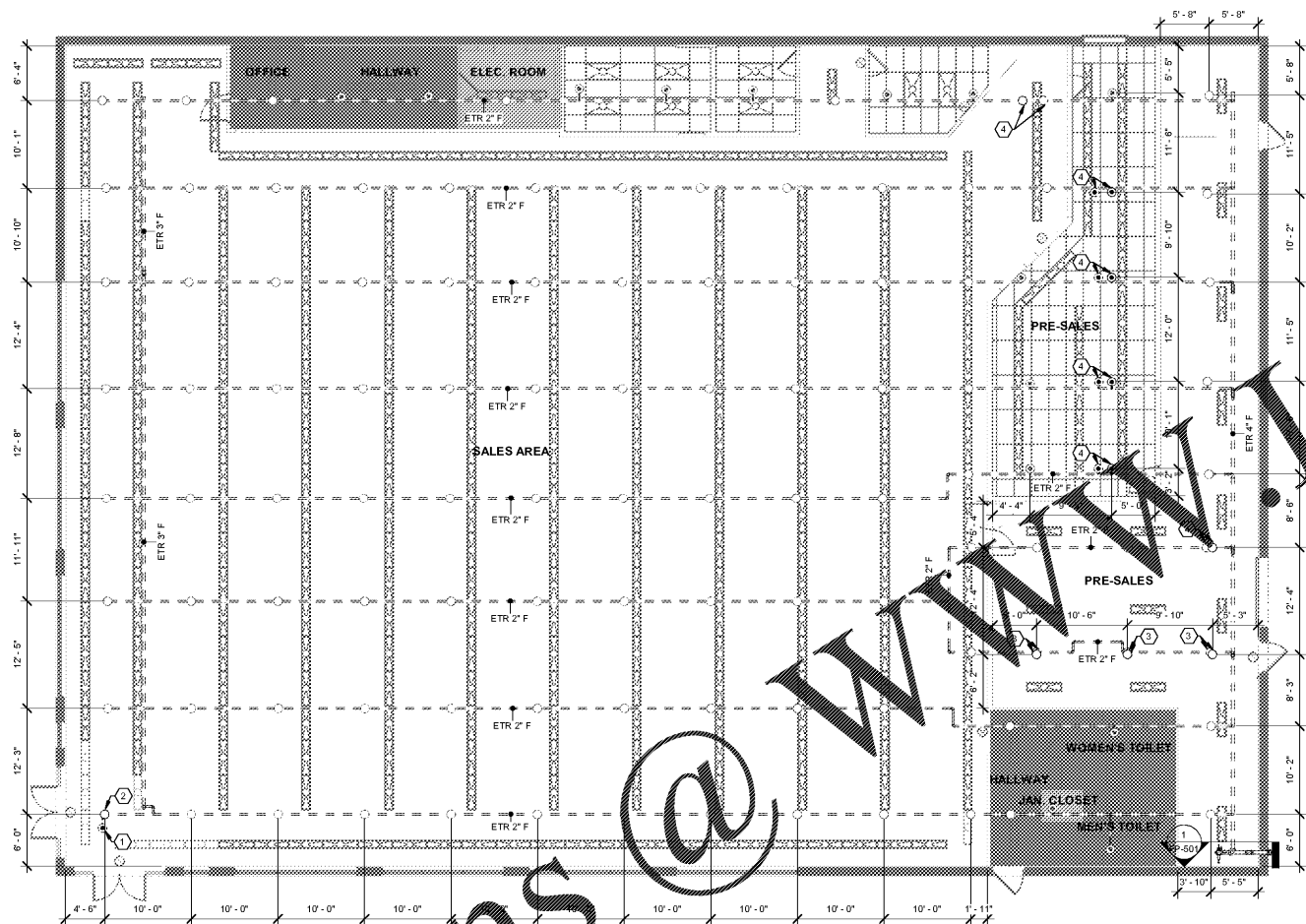


Order Plans @ www.walddilinc.com



HAZARD CLASS LEGEND

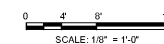
- LIGHT HAZARD (0.10 GPM/SQFT)
- ORDINARY HAZARD GROUP 1 (0.15 GPM/SQFT)
- ORDINARY HAZARD GROUP 2 (0.20 GPM/SQFT)

DRAWING NOTES

1. REFER TO 001 FOR GENERAL NOTES, ABBREVIATIONS, AND LEGEND.
2. REFER TO 001 FOR FURTHER CLARIFICATION ON DEMOLITION AND NEW WORK EFFORTS.
3. ALL NEW ARM-OVERS SHALL BE 1-INCH IN DIAMETER UNLESS OTHERWISE INDICATED.

KEYED NOTES

1. DEMOLISH PENDENT SPRINKLER BACK TO BRANCHLINE AND CAP.
2. FURNISH AND INSTALL UPRIGHT SPRINKLER TO ENSURE NFPA 13 COMPLIANT COVERAGE.
3. INITIAL FIELD SURVEY IDENTIFIED SPRINKLER HEAD LOCATED IN EXCESS OF MAXIMUM ALLOWABLE COVERAGE PERMITTED BY NFPA 13. CONTRACTOR TO VERIFY AND RELOCATE AS NECESSARY TO ACHIEVE NFPA 13 COMPLIANT COVERAGE.
4. RELOCATE SPRINKLER TO ENSURE NFPA 13 COMPLIANT COVERAGE.



ENGINEERS
 PLANNERS
 ARCHITECTS
 SCIENTISTS
 CONSTRUCTION MANAGERS
 PROJECT MANAGERS
 ESTIMATORS
 SURVEYORS
 INSPECTORS
 TECHNOLOGIES
KCI
 1015 W. WASHINGTON STREET
 FORT WORTH, TX 76102
 TEL: (817) 752-8000

mark	date	description

date	project	designed	drawn	checked
02/04/2021	211932	MCF	MCF	CDK

RRMM
 ARCHITECTS, PC
 Robert S. Berz, Jr., Architect
 Duane M. Harver, Architect
 1317 Executive Blvd, Suite 200
 Chesapeake, VA 23320
 (757) 622-2828 / fax (757) 622-8883

PROFESSIONAL ENGINEER
 No. PE058361
 PROFESSIONAL
 MATTHEW E. HULLNER
 2-04-2021

project
 drawing
 sheet
FORMER WALGREENS, FDS #797103
 COCHRAN, GA
 SPRINKLER FLOOR PLAN

sheet
FP-101