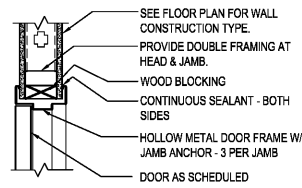
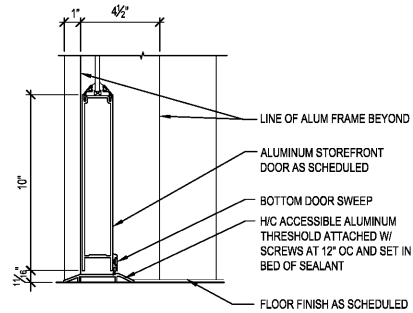


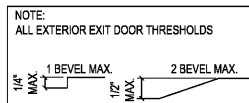
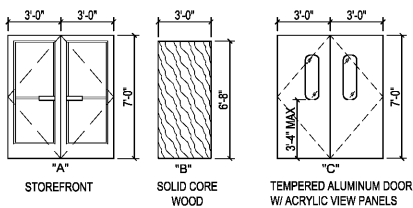
1 HEAD / JAMB DETAIL
SCALE: 1 1/2" = 1'-0"



2 HEAD / JAMB DETAIL
SCALE: 1 1/2" = 1'-0"



3 SILL AT STOREFRONT DOOR
SCALE: 3" = 1'-0"



DOOR TYPES
SCALE: 1/4" = 1'-0"

FINISH SCHEDULE

ROOM #	SPACES	FLOORS	BASES	WALLS	CEILING	NOTES
101	EXIST SALES AREA	POLISHED CONCRETE	4" VINYL	EXIST GWB - PAINT PER ELEVATIONS SHEET A3 / FRP TO 4'-0"	EXPOSED	1,2,4,5,8,12,13
102	EXIST PASSAGE 1	POLISHED CONCRETE	4" VINYL	EXIST GWB - PAINT PT-2	EXIST GWB	2,3,5,7
103	EXIST ELECTRICAL RM	- SEALED CONCRETE	-	EXIST GWB	EXPOSED	6
104	OFFICE	POLISHED CONCRETE	4" VINYL	EXIST / NEW GWB - PAINT PT-3	EXIST GWB	2,5,7,10
105	EXIST GENERAL AREA 1	CONCRETE	-	EXIST GWB - PAINT PER ELEVATIONS SHEET A3	EXPOSED	12,13
106	EXIST PASSAGE 2	CONCRETE	-	EXIST GWB - PAINT PT-2	EXPOSED	-
107	EXIST GENERAL STOCK 1	CONCRETE	-	ETR	EXIST ACT	3
108	EXIST GENERAL STOCK 2	CONCRETE	-	ETR	EXIST ACT	3
109	EXIST GENERAL STOCK 3	CONCRETE	-	ETR	EXIST ACT	3
110	EXIST PASSAGE 3	POLISHED CONCRETE	4" VINYL	EXIST GWB - PAINT PT-2 / EXIST FRP	EXPOSED	2,5,7,13
111	EXIST WOMEN'S TOILET	EXIST CERAMIC TILE	EXIST CERAMIC TILE	EXIST FRP	EXIST GWB - PAINT WHITE	11
112	EXIST MEN'S TOILET	EXIST CERAMIC TILE	EXIST CERAMIC TILE	EXIST FRP	EXIST GWB - PAINT WHITE	11
113	EXIST PRE-SALES	- SEALED CONCRETE - 12" PAINTED AROUND PERIMETER, COLOR PT-8	-	EXIST GWB	EXPOSED	2,4,6,8
114	EXIST GENERAL STOCK 4	CONCRETE	-	EXIST GWB	EXIST ACT	3
115	EXIST JANITOR'S CLOSET	CONCRETE	EXIST VINYL	EXIST FRP	EXIST GWB	2

FINISH NOTES

- CARPET TILE: MANUFACTURED BY PORTICO SYSTEMS AND TENANT SUPPLIED / CONTRACTOR INSTALLED. INSTALL TILES QUARTER TURNED AND PER TENANT'S CRITERIA. ENTRY TILE: DOMINATOR LP TILE: ANTHRACITE #1593. CONTRACTOR SHALL PREPARE FLOOR SURFACE AND COORDINATE CARPET INSTALLATION W/ CARPET INSTALLER.
- VINYL COVE BASE: 4" HIGH TOPSET COVE VINYL - ARSTRONG, BLACK. VINYL BASE ON EXPOSED AREAS ONLY IN SALES ROOM (NOT BEHIND GONDOLAS AND FREEZER / COOLERS). VINYL COVE BASE TO BE LOCATED IN PRE-SALES AT JANITOR / UTILITY CABINET ONLY.
- REPLACE MISSING AND/OR DAMAGED ACT. REPLACEMENT OF THE 2'-0"x4'-0" TILES SHALL MATCH EXISTING. CLEAN ENTIRE CEILING AND GRID WITH A CLEANSING SPRAY TO PROVIDE A UNIFORM WHITE SURFACE.
- FRP (FIBERGLASS REINFORCED PANEL - GLASBORD # 85 - WHITE W/ PEBBLED EMBOSSED FINISH. BY CRANE COMPOSITES OR EQUAL); IN PRE-SALES BEHIND UTILITY CABINET ONLY. FRP ON SALES / HALLWAY TO 4'-0" AFF (WHERE NOTED ON ELEVATIONS ON SALES) SHALL BE PAINT PT-3 COLOR WITH "J" CHANNEL TRIM CAP AND "H" CHANNEL PANEL CONNECTORS.
- POLISHED CONCRETE FLOOR PER MANUFACTURE SPECIFICATIONS BY TENANT'S VENDOR. COORDINATE WITH TENANT.
- SEALER: CLEAR ACRYLIC SEALER BY MASTERKURE, CC 300SB OR FDS- APPROVED SUBSTITUTE.
- HOLLOW METAL DOORS AND FRAMES TO BE PRIMED & PAINTED IN FIELD WITH 1 COAT PRIMER AND 2 COATS COLOR TO MATCH WALL SURFACE OF DOOR FACING.
- 12" STRIPE AROUND PERIMETER & AROUND COLUMNS; COLOR: PT-8.
- EXPOSED STEEL COLUMNS TO BE PAINTED PT-2. ROUND COLUMNS ARE NOT TO RECEIVE COVE BASE.
- PROVIDE PREFORMED COUNTER WITH WHITE HIGH PRESSURE LAMINATE FINISH. MOUNT TO WALLS. FILING CABINETS PROVIDED BY TENANT. SEE ENLARGED OFFICE PLAN AND OFFICE ELEVATION.
- REPLACE ANY MISSING, DAMAGED, OR CRACKED CERAMIC TILE WITH NEW TO MATCH EXISTING.
- SALES AREA TO RECEIVE LEVEL 4 FINISH. PROVIDE FINISH TO 1/2" BEHIND FREEZER / COOLER AND GONDOLA. TO FLOOR WHERE ELSE. CONTRACTOR SHALL ALLOW 72 HOUR CURE TIME.
- EXPOSED ROOF DECK / ROOF STRUCTURE, DUCTWORK, PIPING, ETC. SHALL BE PAINTED WHITE TO MATCH EXISTING. REFER TO ELEVATIONS FOR ADDITIONAL INFORMATION. CONTRACTOR SHALL CONFIRM WITH LOCAL FIRE DEPARTMENT IF FIRE LINES ARE TO BE PAINTED RED. (THIS ONLY APPLIES IN SPACES THAT ARE SPRINKLED).

INTERIOR FINISH MATERIAL SCHEDULE

NO.	TYPE	COATS	BENJAMIN MOORE	LOW VOC BASE PRODUCT
PT-1	EGGSHELL	2	BM #201570 - LIGHTING WHITE	SUPER HIDE ZERO VOC LATEX - 357
PT-2	SEMI-GLOSS ENAMEL	2	BM #201570 - LIGHTING WHITE	SUPER HIDE ZERO VOC LATEX - 358
PT-3	SEMI-GLOSS ENAMEL	2	BM #201570 - LIGHTING WHITE	SUPER HIDE ZERO VOC LATEX - 358
PT-7	SEMI-GLOSS	2	FLOOR GREEN	TOUGH SHIELD ACRYLIC GLOSS - TY 43
PT-8	SEMI-GLOSS	2	FLUOR WHITE	TOUGH SHIELD ACRYLIC GLOSS - TY 43

DOOR SCHEDULE

#	DOORS			MATERIAL	DETAILS			FR	HDW NOTES	DOOR NOTES
	W	H	T		TYPE	HEAD	JAMB			
100	3'-0"	6'-8"	1.314"	SOLID CORE WOOD	B	2/A4	2/A4	-	100A	2,3,12
200	PR 3'-0"	7'-0"	.063"	ALUM. / ACRYLIC	C	1/A4	1/A4	-	200A	2,5,8
300	3'-0"	6'-8"	1.314"	EXIST SOLID CORE WD	-	-	-	-	300B	1,2,3,7,10
301	2'-6"	6'-8"	1.314"	EXIST SOLID CORE WD	-	-	-	-	300D	1,2,3,6,10
302	3'-0"	6'-8"	1.314"	SOLID CORE WOOD	B	2/A4	2/A4	-	300D	2,3,12
303	3'-0"	6'-8"	1.314"	EXIST SOLID CORE WD	-	-	-	-	300D	1,2,3,10
400	3'-0"	7'-0"	1.314"	EXIST HOLLOW METAL	-	-	-	-	400C	1,2,3,4,10
401	3'-4"	7'-0"	1.314"	EXIST HOLLOW METAL	-	-	-	-	400C	1,2,3,4,8,10
500	PR 3'-0"	6'-10"	1.314"	ALUM & GLASS	A	-	-	3/A4	500A	2,4,8,11,13
600	PR 3'-0"	6'-8"	1.314"	SOLID CORE WOOD	B	2/A4	2/A4	-	600A	2,3,12

DOOR NOTES

- ALL MISSING DOOR HARDWARE WILL BE SUPPLIED BY TENANT. GC IS RESPONSIBLE FOR INSTALLATION.
- DOOR TO MEET ADA DOOR OPENING PRESSURE GUIDELINES, MAX. 5 LBS (INT) & 10-15 LBS (EXTERIOR).
- ALL DOORS AND FRAMES ARE TO BE PAINTED IN FIELD TO MATCH WALL SURFACE ON EACH SIDE PER EXTERIOR AND INTERIOR FINISH SCHEDULES.
- CONTRACTOR TO PROVIDE AND INSTALL DOOR SWEEP ON ALL EXTERIOR DOORS TO PREVENT WATER, WIND, AND DEBRIS INFILTRATION.
- GLASS DOOR: CONTRACTOR RESPONSIBLE FOR INSTALLING GLASS DOOR AND PROVIDING METAL ON METAL CONTACT. ELIASON DOORS TO BE FACTORY FINISHED PER DOOR SCHEDULE.
- PROVIDE SIGNAGE ON THE EGRESS SIDE, ON OR ADJACENT TO THE DOOR STATING: "THIS DOOR TO REMAIN UNLOCKED WHEN BUILDING IS OCCUPIED." THE SIGN SHALL BE IN LETTERS 1" HIGH ON A CONTRASTING BACKGROUND.
- INSTALL TENANT SUPPLIED SIGNAGE PER DETAIL DIA1.3.
- PROVIDE SIGNAGE THAT READS "EMPLOYEES ONLY."
- PROVIDE SIGNAGE THAT READS "EMERGENCY EXIT ONLY."
- DOOR, FRAME AND HINGES ARE EXISTING. PROVIDE AND INSTALL ANY MISSING ITEMS OF HARDWARE PER HARDWARE NOTES.
- PROVIDE NYLON WASHER/GROMMETS AT THE DOOR HANDLES AND CRASH BARS TO PREVENT METAL ON METAL CONTACT.
- ALL NEW DOOR FRAMES, CASED OPENING AND HARDWARE MATERIAL WILL BE SUPPLIED BY TENANT. GC IS RESPONSIBLE FOR INSTALLATION.
- PROVIDE STOREFRONT DOORS AND THRESHOLD TO MATCH EXIST. PROVIDE SHOP DRAWINGS TO LANDLORD FOR APPROVAL PRIOR TO INSTALLATION.

GENERAL HARDWARE NOTES

- THRESHOLDS AT EGRESS DOORS SHALL BE NO MORE THAN 1/2" (MAX) HEIGHT AFF.
- ALL DOOR HANDLES, PULLS, LATCHES, LOCKS AND OTHER OPERATING DEVICES SHALL BE INSTALLED 34" (MIN) TO 44" (MAX) AFF AND SHALL BE "SINGLE-HANDED" OPERABLE WITHOUT USE OF KEY OR SPECIAL KNOWLEDGE.
- WHERE EGRESS DOORS ARE USED IN PAIRS, THE UNLATCHING OF THE LEAF SHALL NOT REQUIRE MORE THAN ONE (1) OPERATION AS MENTIONED IN GENERAL HARDWARE NOTE #2 ABOVE.
- CONTROLS AND OPERATING MECHANISMS SHALL BE LEVER-TYPE (OR EQUAL) PROVIDING OPERATION WITH ONE HAND AND NOT REQUIRE TIGHT GRASPING, PINCHING, OR TWISTING OF THE WRIST.
- DOORS EQUIPPED WITH CLOSERS SHALL BE ADJUSTED SO THAT THE SWEEP PERIOD FROM AN OPEN POSITION OF 70 DEGREES WILL TAKE AT LEAST 3 SECONDS TO MOVE TO A POINT 3" FROM THE LATCH, MEASURED FROM THE LEADING EDGE OF THE DOOR.

HARDWARE NOTES

- HDW # 100A
EXIST 1 1/2" PAIR HINGES: STANDARD WEIGHT
INSTALL 1 1/2" MECHANICAL WITH BUTT JAW LOCKSET WITH
DOOR HANDLE
EXIST 1 CLOSER
EXIST 1 FLOOR STOP
- HDW # 200A
EXIST 3" ALUMINUM TRAFFIC DOOR
EXIST BI-SWING HINGE SYSTEM
9" X 30" CLEAR ACRYLIC WINDOW
FLUSH HOLLOW METAL FRAME - DRYWALL
- HDW # 300B
EXIST 1 1/2" PAIR HINGES: STANDARD WEIGHT
EXIST 1 PUSH PLATE
EXIST 1 PULL HANDLE
EXIST 1 CLOSER
EXIST FLOORWALL STOP
- HDW # 300D
EXIST 1 1/2" PAIR HINGES: STANDARD WEIGHT
EXIST 1 STOREROOM LOCKSET WITH LEVER HANDLE (2 KEYS)
EXIST FLOORWALL STOP
- HDW # 400C
EXIST 1 1/2" PAIR HINGES: STANDARD WEIGHT, NON-REMOVABLE PINS
EXIST 1 NON-ALARMED, NON-KEYED PANIC BAR DEVICE
EXIST 1 CLOSER WITH STOP ARM
EXIST 1 ALUM THRESHOLD (1/2" MAX HEIGHT)
EXIST 1 SWEEP
EXIST 1 WEATHER STRIP
EXIST 1 RAIN DRIP
INSTALL PEEP HOLE
- HDW # 500A
HINGES PER STOREFRONT MANUFACTURER (BY GENERAL CONTRACTOR)
2 CLOSERS WITH STOP ARM AND DROP PLATE
2 PUSH PLATES (BY GENERAL CONTRACTOR)
2 PULL HANDLES (BY GENERAL CONTRACTOR)
1 KABA CYLINDER (SUPPLIED BY TENANT)
1 COMMERCIAL GRADE DEADLOCK W/ THUMB TURN ON SALES SIDE (BY GENERAL CONTRACTOR)
- NOTE: CONTRACTOR SHALL VERIFY CLOSER DOES NOT HAVE A HOLD-OPEN FEATURE. IF CLOSER DOES, THE CONTRACTOR SHALL REPLACE WITH NEW CLOSER.
- HDW # 600A
1 1/2" PAIR HINGES: STANDARD WEIGHT, BALL BEARING PINS
1 CLOSER
1 PULL HANDLE
1 PUSH PLATE (FLOORWALL STOP IF SHIPPED WITH HARDWARE)

description

date	mark	revisions

date	project	designed	drawn	checked
2/11/02				



RRMM ARCHITECTS, PC
Robert S Berz, Jr, Architect
Duane M Harver, Architect
1317 Executive Blvd, Suite 200
Chesapeake, VA 23320
(757) 522-2528 / Fax (757) 522-6885



project	sheet
FORMER WALGREENS, FDS #197103 COCORAN, GA DOOR TYPES, DETAILS, DOOR AND FINISH SCHEDULES	A4

Order Plans @