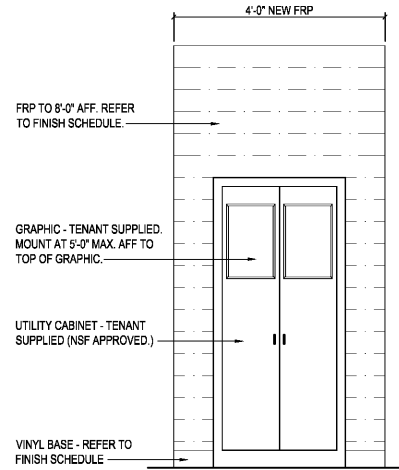
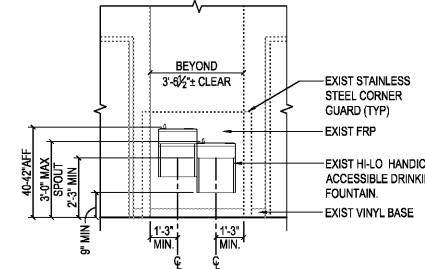


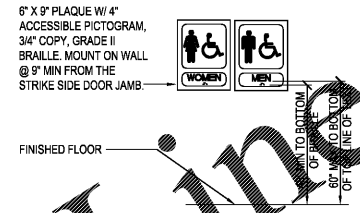
A SHELVING, LOCKER, AND COAT RACK ELEVATION
A1.3 SCALE: 3/4" = 1'-0"



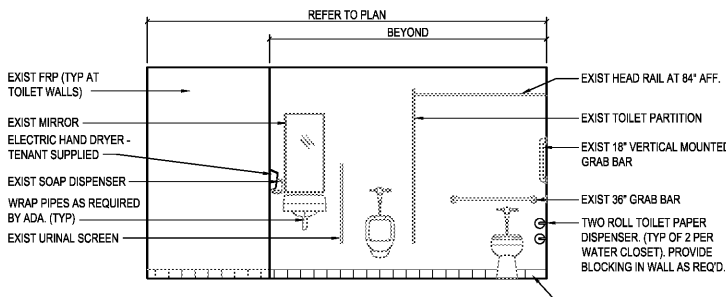
B UTILITY CABINET ELEVATION
A1.3 SCALE: 3/4" = 1'-0"



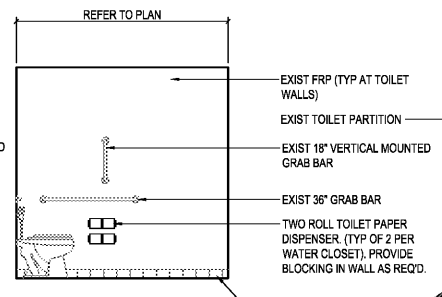
C DRINKING FOUNTAIN ELEVATION
A1.3 SCALE: 3/8" = 1'-0"



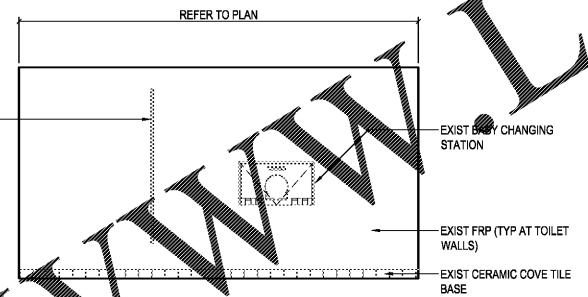
D STORAGE ELEVATION
A1.3 SCALE: 3/8" = 1'-0"



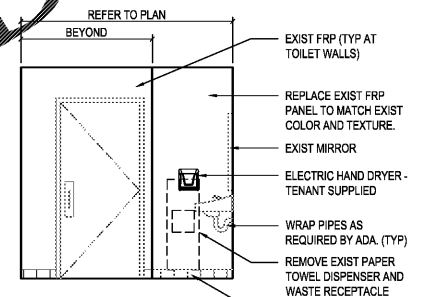
E MEN'S TOILET ELEVATION
A1.3 SCALE: 3/8" = 1'-0"



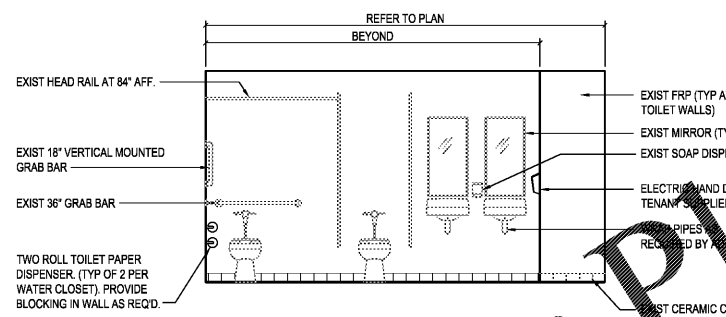
F TOILET ELEVATION
A1.3 SCALE: 3/8" = 1'-0"



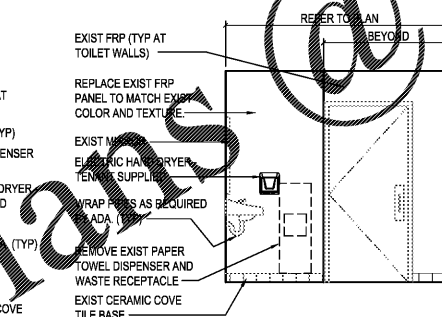
G TOILET ELEVATION
A1.3 SCALE: 3/8" = 1'-0"



H TOILET ELEVATION
A1.3 SCALE: 3/8" = 1'-0"

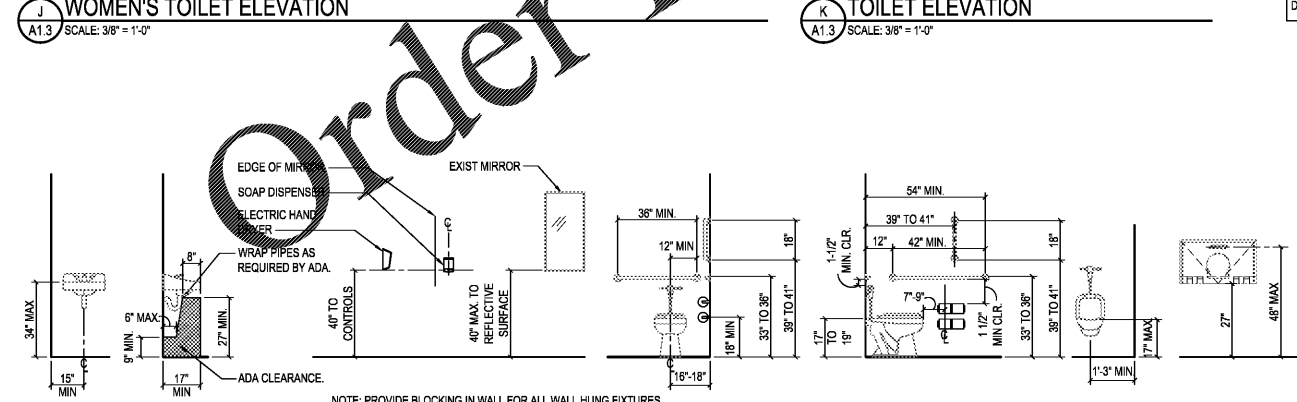


J WOMEN'S TOILET ELEVATION
A1.3 SCALE: 3/8" = 1'-0"



K TOILET ELEVATION
A1.3 SCALE: 3/8" = 1'-0"

NOTE:
TOILET ACCESSORIES ARE TENANT SUPPLIED - INCLUDING GRAB BARS, TOILET PAPER DISPENSER, MIRROR, HAND DRYER, AND SOAP DISPENSER.
THE ELECTRIC HAND DRYER WILL NOT EXTEND MORE THAN 4" FROM THE WALL ON WHICH IT IS MOUNTED UNLESS IT HAS A LEADING EDGE AT OR BELOW 27" ABOVE FINISHED FLOOR.
FLUSH CONTROLS SHALL BE LOCATED ON THE OPEN SIDE OF THE WATER CLOSET.
CONTRACTOR SHALL FIELD VERIFY ALL EXIST PLUMBING FIXTURES AND EXIST ACCESSORIES (INCLUDING LANDLORD INSTALLED PLUMBING FIXTURES AND ACCESSORIES) COMPLY WITH PLANS AND HANDICAPPED CODES AND LAWS. CONTRACTOR SHALL VERIFY COMPLIANCE TO FLOOR PLAN, ENLARGED PLANS AND ELEVATIONS THIS SET. NOTIFY CONSTRUCTION PM WITH ANY DISCREPANCIES.



TYPICAL ACCESSIBILITY CLEARANCES
SCALE: 3/8" = 1'-0"

Order Plans @

WWW.LDILLINE.COM

description	
by	
date	
mark	revisions
000001	21110.02
date	project
designed	drawn
checked	checked
RRMM ARCHITECTS, PC Robert S. Berz, Jr., Architect Duane M. Harver, Architect 1317 Executive Blvd., Suite 200 Chesapeake, VA 23320 (757) 522-2328 Fax (757) 622-6883	
project	drawing
sheet	