

**PARTITION NOTES** SEE A4.1 FOR SECTIONS

ALL PARTITIONS ARE TO BE ACTUAL 3/4" MTL STUD w/ 1/2" GWB ON EACH SIDE UNLESS NOTED OTHERWISE. OTHER ACTUAL MTL STUD THICKS ARE NOTED ON THE PLANS AS 1/2", 7/8", 1" OR 1 1/2" AND FURRING CHANNELS SIZE OF 1/2". ALL FULL HEIGHT METAL STUDS ARE 18 GAUGE, UNLESS NOTED OTHERWISE.

P1-RESERVED  
P2-RESERVED  
P3-RESERVED  
P4-3/4" MTL STUD, 18 GA. @ 16" O.C. TO ROOF DECK ABOVE. 1/2" GWB ON GENERAL SALES TO BE ADDED TO UNDERSIDE OF ROOF DECK ABOVE. 1/2" GWB TO 6" ABOVE FIN. CEILING ON EMPLOYEES PUBLIC SIDE. SEE PLAN NOTES FOR GWB TYPE AND PAINT AS SCHED.

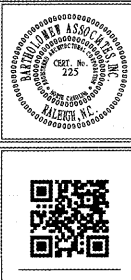
P5-3/4" MTL STUD, 20 GA. @ 16" O.C. FROM SLAB TO 6" MIN ABOVE FIN. CEILING. 1/2" GWB EACH SIDE TO TOP OF STUD. SEE PLAN NOTES FOR GWB TYPE AND PAINT AS SCHED.

P6-1/2" MTL STUD, 20 GA. @ 16" O.C. FROM SLAB TO 6" MIN ABOVE FIN. CEILING. 1/2" GWB EACH SIDE TO TOP OF STUD. SEE PLAN NOTES FOR GWB TYPE AND PAINT AS SCHED.

P7-RESERVED  
P8-RESERVED  
P9-1/2" MTL FURRING CHANNEL, 20 GA. @ 16" O.C. FROM SLAB TO ROOF DECK ABOVE. 1/2" GWB ON INSIDE SIDE. ANCHOR TO SUBSTRATE PER MANUFACTURER'S STANDARD DETAILS. PROVIDE APPROPRIATE SELLS, HEAD & JAMBS @ ALL OPENINGS.

**PLAN NOTES**

1. RESERVED.  
2. SEAL BETWEEN COOLER and/or FREEZER WALL. WRAP TILE TO COOLER/FREEZER USING BULLNOSE ON OUTSIDE CORNERS WHERE CERAMIC TILE IS INDICATED.  
3. RESERVED.  
4. 10'-0" OR 8'-0" CLEAR OPENING BETWEEN CMU/MTL STUD FRAMING FOR AUTOMATIC DOOR. VERIFY W/ DOOR MANUFACTURER'S SPECS. SEE SHEET A8.1 & SPECS FOR AUTOMATIC DOOR MANUF.  
5. RESERVED.  
6. LOCATION OF EXISTING LADDER TO ROOF AND ROOF HATCH TO REMAIN.  
7. LOCATE FLUSH MOUNTED ELEC PANELS IN THIS AREA - SEE ELEC DRAWINGS.  
8. THIS ROOM SHALL BE SEALED AIR TIGHT.  
9. RESERVED.  
10. BOSS COLUMNS w/ 2 1/2" MTL STUDS AND FINISH AS SCHEDULED.  
11. INSTALL GLASS BOARD (FRP) BEHIND MOP SINK TO 8'-0" AFF. SEAL/CAULK CONT. ALL SEAMS.  
12. RESERVED.  
13. CERAMIC WALL TILE ON DUROCK CEMENT BOARD. SEE SHEET A8.1 FOR PATTERNS.  
14. PROVIDE GLASS BOARD FRP PANELS ON 1/2" MOISTURE RESISTANT CHG FROM TOP OF EPOT GYPSUM BASE TO 6" MIN ABOVE FIN. CEILING. SEAL/CAULK ALL SEAMS (TYP). WEAP OPENING W/ FRP ON ALL SIDES.  
15. VERTICAL CERAMIC WALL TILE ON DUROCK CEMENT BOARD. SEE DETAIL A8.1.4 FOR PATTERNS.  
16. 1-PAM SHELF w/ BACKSPLASH BY LOWES FOODS. BLOCKING IN WALL BY G.C.  
17. PAINT EXPOSED COLUMNS w/ EPOXY PAINT. SEE A4.1 FOR COLOR. PROVIDE STAINLESS STEEL COLUMN WRAP UP TO 4'-0" AFF. AT EXPOSED COLUMNS.  
18. PAINT EXPOSED COLUMNS ABOVE SHELVING w/ EPOXY PAINT. SEE A4.1 FOR COLOR.  
19. DOORWAY OR OPENING TO BE 6'-0" w x 8'-0" CLEAR.  
20. RESERVED.  
21. RESERVED.  
22. PROVIDE MOISTURE RESISTANT DRYWALL IN THIS AREA.  
23. RESERVED.  
24. RESERVED.  
25. FLOOR MOUNTED HEAVY DUTY "ASTRO" TYPE SINK. MANUFACTURED BY MCDERMOTT CORPORATION SEE DETAIL A7.1.2 FOR SINK AND SINK RAIL. SINK MANUF. BY MCDERMOTT CORPORATION AND LEGS AS REQUIRED.  
26. RESERVED.  
27. GC TO BUILD REFRIGERATION CHASES AROUND EXPOSED LINES IN ALL PREP ROOMS AND SERVICE AREAS. ALL REFRIGERATION LINES TO BE INSULATED TO MATCH ADJACENT SIDE. PROVIDE 1-PAM SHELF w/ BACKSPLASH BY LOWES FOODS. BLOCKING IN WALL BY G.C.  
28. PROVIDE WALL MOUNTED SINKS (MCCUE) - SEE DETAIL A7.1.8.  
29. INTERIOR-COMM. 4" 1/2" REFRIGERATION PARTITIONS, EXTERIOR WALLS, COOLERS, FREEZERS, SINKS AND SINK RAILS TO BE 1/2" MIN ABOVE FIN. CEILING. SEE PARTITION NOTE - F4.  
30. PROVIDE 1-PAM SHELF w/ BACKSPLASH BY LOWES FOODS. BLOCKING IN WALL BY G.C.  
31. RESERVED.  
32. 1/2" GWB APPLIED DIRECTLY TO CMU @ MASONRY OPENING.  
33. RESERVED.  
34. RESERVED.  
35. PROVIDE NON-COM. BLOCKING FOR PREP SINK SPRAYER. BLOCKING TO BE 2" WIDE CENTERED ON THE PREP SINK. AND EXTEND FROM 3/4" A.F.F. TO 27" A.F.F. (24" TALL).  
37. PROVIDE NON-COM. BLOCKING FOR PREP SINK SPRAYER & DRYING RACK. BLOCKING TO BE 8" WIDE CENTERED ON THE PREP SINK. EXTEND FROM 3/4" A.F.F. TO 24" A.F.F. (24" TALL).  
38. INSTALL 2" x 2" STAINLESS STEEL ANGLE FROM FINISH FLOOR TO 5'-0" ABOVE FINISH FLOOR ON ALL OUTSIDE CORNERS IN PREP ROOMS AND ENTRYWAYS TO PREP ROOMS.  
39. RESERVED.  
40. RESERVED.  
41. RESERVED.  
42. RESERVED.  
43. PROVIDE FLOOR MOUNTED DOCK DOOR PROTECTOR, CSDP-SOFE (MCCUE).  
44. RESERVED.  
45. PROVIDE FTD, BOARD AND BATTEN AND TRIMWORK ON THESE PARTITIONS. SEE SHEET A4.1.  
46. PROVIDE PVC PLAN TILE IN ELECTRICAL ROOM. SEE DETAIL A7.1.9.



**LDILine.com**  
www.LDILine.com

**bai - ARCHITECTS**  
978 Trinity Road - Raleigh, North Carolina 27607 - (919) 859-7121 - bai-architects.com  
THE USE OF THESE PLANS AND SPECIFICATIONS SHALL BE RESTRICTED TO THE ORIGINAL USER FOR WHICH THEY WERE PREPARED AND FOR WHICH THEY WERE EXPRESSLY INTENDED. NO REPRODUCTION, DISTRIBUTION, OR MODIFICATION OF ANY PART OF THESE PLANS OR SPECIFICATIONS SHALL BE MADE WITHOUT THE WRITTEN CONSENT OF BAI ARCHITECTS. VISUAL CONTACT WITH THESE PLANS AND SPECIFICATIONS SHALL CONSTITUTE FRAUDULENT VIOLATION OF THESE RESTRICTIONS.



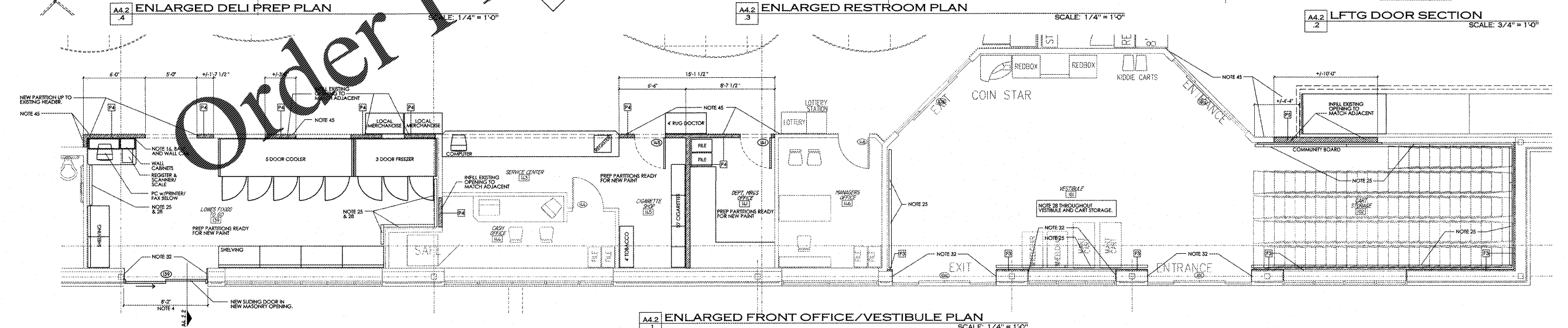
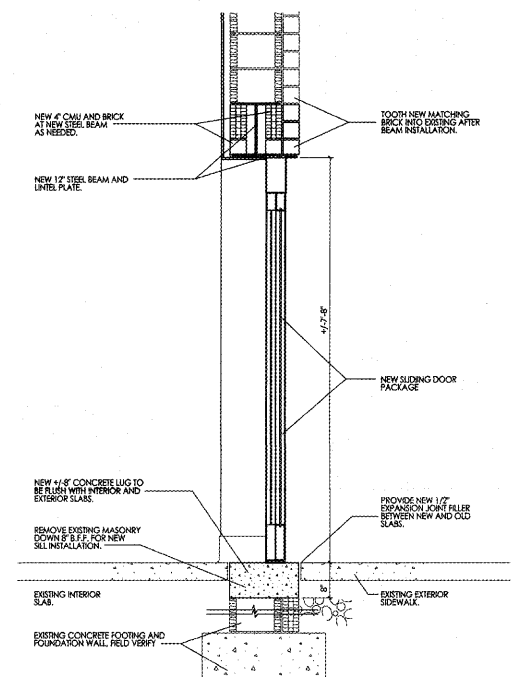
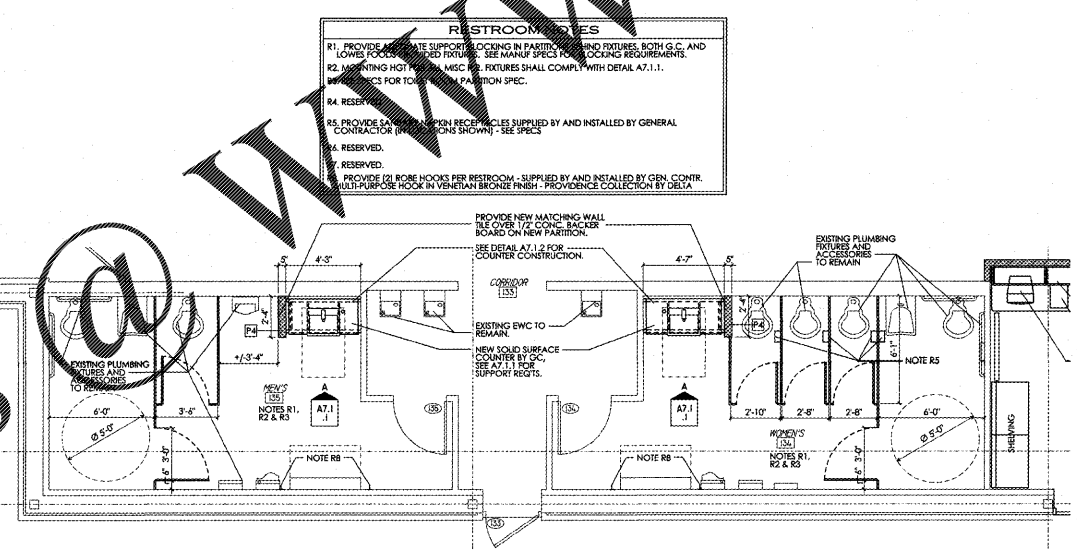
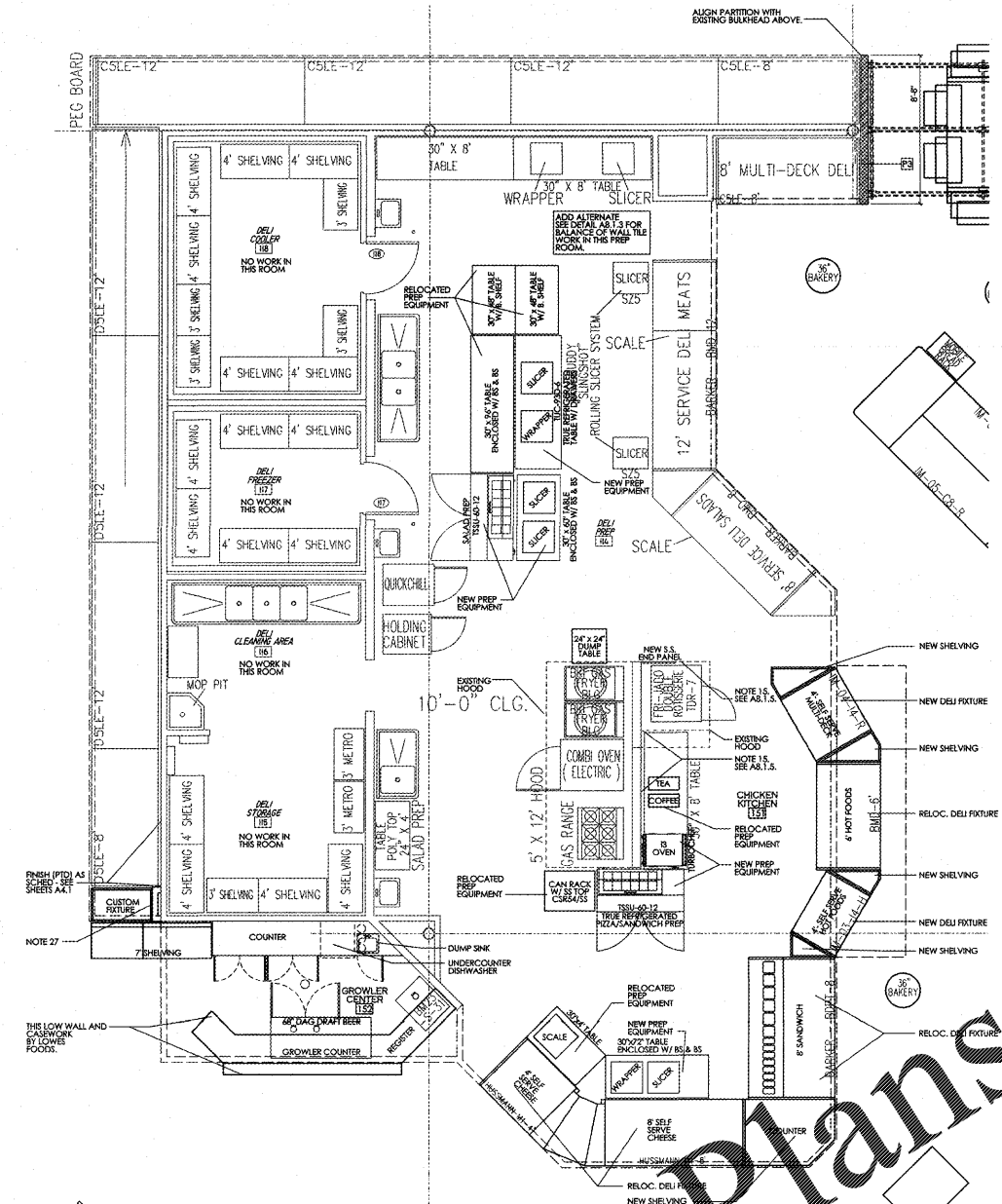
**COMMENTS/REVISIONS**

NO.	DATE	DESCRIPTION
1	06/03/20	ISSUE PLAN APPROVED
2	07/17/20	RELEASED FOR BIDDING/CONSTRUCTION

**INTERIOR RENOVATION FOR STORE #182 AT WALKERTOWN COMMONS SHOPPING CENTER**  
5180 Reidsville Road  
Walkertown, North Carolina 27651  
RELEASED FOR CONSTRUCTION @ 07/17/20



**A4.2**  
LOWES FOODS ST. #182



**Order Plans**

**WWW.LDILine.com**