

ELECTRICAL GENERAL NOTES AND SPECIFICATIONS

- 1) ALL WORK SHALL CONFORM TO BUILDING STANDARDS, LOCAL CODES AND CONTRACT DOCUMENTS
- 2) CONTRACTOR IS REQUIRED TO MAKE AN ON SITE INSPECTION AND INCLUDE IN HIS BID AN ALLOWANCE FOR FIELD CONDITIONS
- 3) CONTRACTOR MUST GUARANTEE HIS WORK FOR A PERIOD OF ONE YEAR FROM THE DATE OF COMPLETION OF HIS WORK
- 4) CONTRACTOR MUST BE A LICENSED ELECTRICIAN AND DO ALL FILING OF PLANS WITH THE LOCAL AUTHORITIES AND PAY ALL FILING FEES AS REQUIRED BY LAW
- 5) ALL COMPONENTS SHALL BE UL LISTED, SPECIFICATION GRADE. ALL COMPONENTS SHALL BE NEW EXCEPT WHERE OTHERWISE SHOWN
- 6) PROVIDE GROUND BLOCKS IN PANELS AND BOND TO BUILDING STEEL
- 7) ALL DISCONNECT SWITCHES, LUGS AND CIRCUIT BREAKERS SHALL BE RATED FOR 75° OPERATION
- 8) COORDINATE CORE DRILLING, CHOPPING OF FLOORS, AND WORK IN OTHER TENANT AREAS WITH THE BUILDING MANAGER
- 9) ALL PANEL DIRECTORIES SHALL BE UPDATED TO REFLECT ALL CHANGES DUE TO THE CONTRACT
- 10) ALL OPENINGS MADE DUE TO REMOVAL OR INSTALLATION OF ELECTRICAL DEVICES, EQUIPMENT OR RACEWAYS SHALL BE SEALED IN AN APPROVED MANNER
- 11) ALL PENETRATIONS THROUGH FIRE RATED PARTITIONS OR FLOORS MUST BE FIRE STOPPED WITH CHASE FOAM
- 12) ALL METAL RACEWAYS, ENCLOSURES, BOXES, MOTORS AND LIGHTING FIXTURES SHALL BE GROUNDED IN AN APPROVED MANNER

RACEWAYS

- 1) CONDUITS LARGER THAN 2 INCHES, EXPOSED OUTDOORS, CONDUITS IN SLABS AND FOR SERVICE ENTRANCE AND EQUIPMENT SHALL BE RIGID ALUMINUM OR GALVANIZED STEEL
- 2) CONDUITS 2 INCHES OR LESS LOCATED IN CEILINGS OR WALLS SHALL BE EMT 3/4" MINIMUM SIZE
- 3) FINAL CONNECTIONS TO MOTORS, TRANSFORMERS, MECHANICAL EQUIPMENT AND LIGHT FIXTURES SHALL BE VIA FLEXIBLE CONDUIT
- 4) OUTLET BOXES SHALL BE GALVANIZED STEEL
- 5) FLEXIBLE METALLIC CONDUIT AND OR 'BX' CABLE MAY BE USED FOR CONCEALED WORK WITH THE APPROVAL OF THE OWNER AND LOCAL CODES

CIRCUITRY

- 1) CONDUCTORS SHALL BE COPPER. BRANCH CIRCUIT CONDUCTORS SHALL BE #12 AWG MINIMUM. CIRCUITS IN EXCESS OF 80 FEET SHALL BE #10 AWG UNLESS OTHERWISE NOTED. INSULATION SHALL BE THHN, THWN OR XHHW
- 2) FEEDER AND BRANCH CIRCUIT CONDUCTORS RATED FOR 200 AMPS AND GREATER (#3/0 WIRES AND LARGER) SHALL BE RATED FOR 90DEGREE SERVICE, INCLUDING GROUND WIRE AND INSULATION SHALL BE THWN OR XHHW
- 3) ALL BRANCH CIRCUITING FOR WALL MOUNTED RECEPTACLES SHALL BE RUN IN HUNG CEILING AND/OR WALL CAVITIES VIA ELECTRICAL METALLIC TUBING
- 4) ALL BRANCH CIRCUITING FOR LIGHTING FIXTURES SHALL BE RUN IN HUNG CEILING AND/OR CAVITIES VIA ELECTRICAL METALLIC TUBING WITH CIRCUIT NUMBERS AND SWITCH CONTROL AS SHOWN. FINAL CONNECTIONS TO LIGHTING FIXTURES SHALL BE MADE VIA FLEXIBLE CONDUIT
- 5) ALL POWER CONTROL AND SIGNAL WIRING EXCEPT TELEPHONE SHALL BE PROVIDED BY THE ELECTRICAL CONTRACTOR!
- 6) COORDINATE RECEPTACLES WITH ANY SPECIAL EQUIPMENT
- 7) ALL BRANCH CIRCUITING SHALL BE TAGGED AT EACH BOX AND AT PANEL

LIGHTING

- 1) AS INDICATED

FIRE ALARM DESCRIPTION

PROVIDE FIRE ALARM HORN
 PROVIDE FIRE ALARM STROBE IN EACH TOILET ROOM
 PROVIDE DISCONNECTS PER NEC 430 & 422.21 ALL J-BOX LOCATIONS
 ISOLATED RECEPTACLE GROUND FOR COMPUTER EQUIPMENT TO BE GROUNDED BY AN INSULATED EQUIPMENT GROUNDING CONDUIT TO RUN WITH THE CIRCUIT CONDUCTORS
 AN INSULATED EQUIPMENT GROUNDING CONDUIT TO RUN WITH THE CIRCUIT CONDUCTORS
 THIS GROUNDING SHALL BE PERMITTED TO PASS THRU ONE OR MORE PANELBOARDS WITHOUT CONNECTION TO THE MAIN PANELBOARD GROUNDING TERMINAL AS PERMITTED IN NEC SECTION 384-20 EXCEPTION
 SO AS TO TERMINATE WITHIN THE SAME BUILDING OR STRUCTURE DIRECTLY AT AN EQUIPMENT GROUNDING CONDUCTOR TERMINAL OF THE APPLICABLE DERIVED SYSTEM OR SERVICE

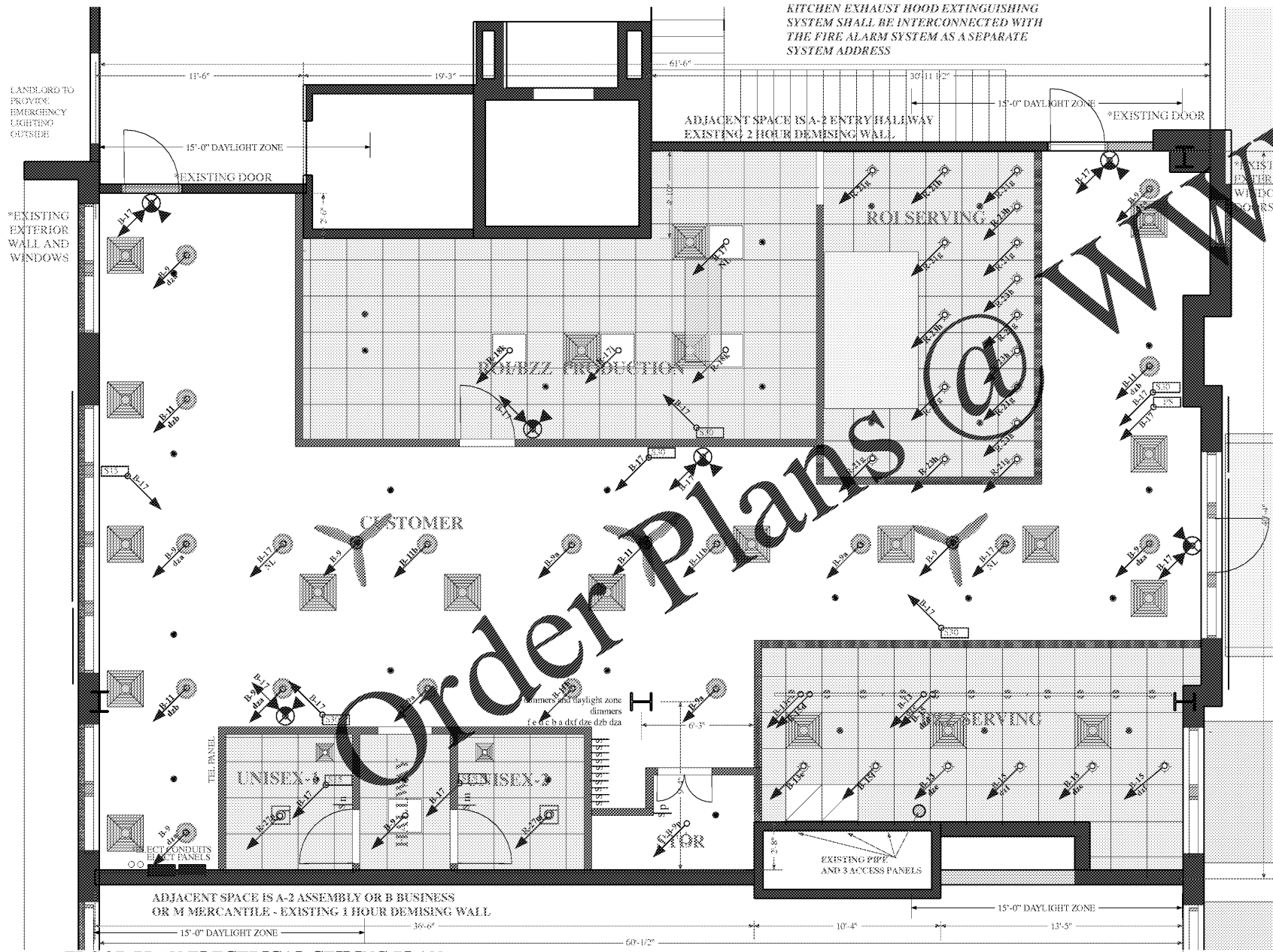
S30 = 30 CANDELA STROBE (COVERS 30X30 AREA)
 S15 = 15 CANDELA STROBE (COVERS 15X15 AREA)
 4AS15 = AUDIBLE ALARM AND CANDELA (COVERS 15X15 AREA)
 4AS30 = AUDIBLE ALARM AND CANDELA (COVERS 30X30 AREA)
 PS = PULL STATION - FIRE ALARM PULL STATION LOCATED NEAR FRONT DOOR
 W = WALL MOUNT
 C = CEILING MOUNT



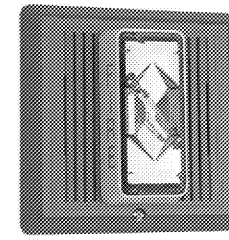
The center has a sprinkler system and Fire Alarm system
 The system is monitored
 The fire panel is in a dedicated space in the building
 The F/A fire alarm panel is in a dedicated space in the building
 Verify all information and the preferred service company with Landlord
 F/A drawings and specs to be prepared by others for jurisdiction approval

NOTE: 5 SHUNT TRIP REQUIRED FOR EXHAUST HOOD, ANSUL PANEL AND CONVECTION OVEN

KITCHEN EXHAUST HOOD EXTINGUISHING SYSTEM SHALL BE INTERCONNECTED WITH THE FIRE ALARM SYSTEM AS A SEPARATE SYSTEM ADDRESS

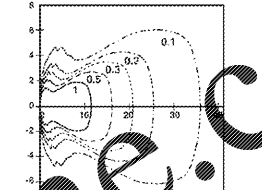


FLOOR PLAN ELECTRICAL CEILING PLAN



STROBE BY EDWARDS SIGNAL IN 15-75 CANDELA HORN STROBE WALL MOUNT TO BE MOUNTED 80"-96" AFF

PHOTOMETRICS FOR DUAL HEAD EMERGENCY LIGHT TO SUPPORT SPACING SHOWN ON PLAN
 Photometrics
 High-Output 6V, 5.4W Incandescent Lamp



Horizontal Isofootcandle Distribution

SAMPLE PROTOTYPE ADAPTATION

roibzzPROTO - Roll-On-In / Buzzed Bull Creamery
 Combo SAMPLE PROTOTYPE ADAPTATION
 12/FEB/2021

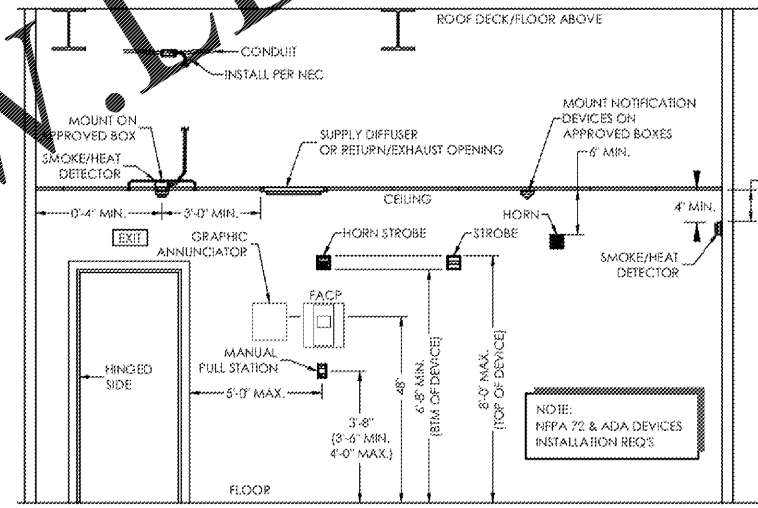
PRELIMINARY NOT FOR FINAL CONSTRUCTION

LIGHTING ALLOWANCE IECC
 OCCUPIED AREAS 2423 SF @ 1.3W/SF = 3149 WATTS

TOTAL LIGHTING WATTS ALLOWED: 3149 WATTS

TOTAL BUILDING DESIGN CALCULATED TO ACCOMMODATE ALLOWANCES
 TOTAL LIGHTING WATTS SHOWN = 1369 WATTS (NOT INCLUDING EXIT LIGHTS)

WORST CASE LIGHTING
 LAY-IN FLUORESCENT 2X2: 5 LIGHTS * 23 WATTS EACH = 115 WATTS
 DOWNLIGHTS: 23 LIGHTS * 23 WATTS EACH = 529 WATTS
 CHANDELIERS: 18 LIGHTS * 14 WATTS EACH = 252 WATTS
 TRACK LIGHTS: 11 LIGHTS * 15 WATTS EACH = 165 WATTS
 TOILET ROOM FAN LIGHTS: 2 LIGHTS * 110 WATTS EACH = 220 WATTS
 WALK-IN LIGHTS: 1 LIGHT * 88 WATTS EACH = 88 WATTS
 TOTAL: 1369 WATTS



FIRE ALARM DEVICE LOCATIONS

NO SCALE

IF REQUIRED BY CODE OR BY LANDLORD OR LOCAL AUTHORITY

ALL INTERIOR LIGHTS TO BE EQUIPPED WITH AN AUTOMATIC CONTROL DEVICE TO SHUT OFF LIGHTING. THIS AUTOMATIC CONTROL DEVICE SHALL FUNCTION ON A SCHEDULED BASIS, USING TIME-OF-DAY, WITH AN INDEPENDENT PROGRAM SCHEDULE THAT CONTROLS THE INTERIOR LIGHTING!

THE REQUIRED OVERRIDE CONTROL TO BE 2 HR MAX PER IECC 505.2.2.2 AUTOMATIC LIGHTING SHUT-OFF

LIGHTING LEGEND

- LAY-IN 2X2 FIXTURE
 METALUX 22CZ-LD4-24-UV-LR35-CD1-U WITH ACRYLIC PRISMATIC LENS
 WORST CASE 23W
- RECESSED DOWNLIGHT: BRUCK LIGHTING 138050 3IN CHROMA LAMP: 15W
 LED - COLOR: WHITE
 WORST CASE 20 WATTS
- RECESSED DOWNLIGHT: BRUCK LIGHTING 138050 3IN CHROMA LAMP: 15W
 LED - COLOR: WHITE SILICONE COATED
 WORST CASE 20 WATTS
- CUSTOMER AREA LIGHTS
 PENDANT FIXTURES - SEA GULL LIGHTING 6517491S-962
 BRUSHED NICKEL DIVISION STREET LED PENDANT
 WORST CASE AND INPUT 14 WATTS
- VENTILATION FAN/LIGHT
 PANASONIC #FV-11VQL3 WHISPER LIGHT FAN LIGHT OR EQUAL
 WORST CASE 110 WATTS EAC
- DUAL HEAD EMERGENCY EXIT LIGHT/ EXIT SIGN
 SIMILAR TO EXIT LIGHT FIXTURE BELOW
- EXIT LIGHT FIXTURE WITH 8" RED LETTERS, BUILT-IN EMERGENCY BATTERY AND CHARGER SUITABLE FOR 1 1/2 HOURS OPERATION, SINGLE FACE AS INDICATED BY FILLED IN AREA. DUAL-LITE SPECTRON SERIES METROPOLITAN SERIES II
- AUTOMATIC FIRE EXTINGUISHING SYSTEM HEAD - LOCATION TO BE VERIFIED BY LANDLORD'S SPRINKLER CONTRACTOR - SEE AE-0310
- LIGHT SWITCH abcd INDICATES GROUPING
- CONTINUOUS TRACK LIGHTING
 LAMP: 15W LED SILICONE COATED IN SERVING AREA
 WORST CASE 15 WATTS
- REAGAN 52" LED INDOOR BRUSHED NICKEL CEILING FAN WITH CHERRY BLADES

NOTES

- 1) VERIFY NEC 700-16 COMPLIANCE FOR FAILURE OF SERVICE LAMP FOR EXIT LIGHTS AND EMERGENCY LIGHTS SHEET AE-0600. EMERGENCY LIGHTING SYSTEMS SHALL BE DESIGNED AND INSTALLED SO THAT THE FAILURE OF ANY INDIVIDUAL LIGHTING ELEMENT, SUCH AS THE BURNING OUT OF A LIGHT BULB, CANNOT LEAVE IN TOTAL DARKNESS ANY SPACE THAT REQUIRES EMERGENCY ILLUMINATION
- 2) ALL ROOF PENETRATIONS-TENANT'S GC IS RESPONSIBLE FOR THE COORDINATION AND USE OF LL'S REQUIRED ROOFER. ALL PENETRATIONS ARE AT TENANT EXPENSE
- 3) J BOX FOR OUTDOOR SIGN AT FRONT DOOR AND AT REAR WHERE APPLICABLE
- 4) NOT USED
- 5) NOT USED
- 6) NOTE: WHERE OPEN FACE FIXTURES ARE USED OVER FOOD PREPARATION AREAS INCLUDING SERVING COUNTER AND PREP ROOM PROVIDE SHIELDS ON LAMPS

SEE AE-0601 FOR ELECTRICAL PANELS

GC WILL PROVIDE ALL ELECTRICAL PANELS WITH A SCHEDULE WITH EACH BREAKER MARKED AS TO IT'S CLEAR, EVIDENT AND SPECIFIC PURPOSE

2423 SF SCALE 1/4" = 1'-0"
 PLAN TRUE
 ELECTRICAL CEILING PLAN / DETAILS - E-2
 AE-0600
 *INDICATES EXISTING
 10'-0"