

ELECTRICAL NOTES

- 01) ISOLATED RECEPTACLE GROUND FOR COMPUTER EQUIPMENT TO BE GROUNDED BY AN INSULATED EQUIPMENT GROUNDING CONDUCTOR RUN WITH THE CIRCUIT CONDUCTORS. THIS GROUNDING SHALL BE PERMITTED TO PASS THRU ONE OR MORE PANEL BOARDS WITHOUT CONNECTION TO THE PANEL BOARD GROUNDING TERMINAL AS PERMITTED IN NEC SECTION 384-20, EXCEPTION, SO AS TO TERMINATE WITHIN THE SAME BUILDING OR STRUCTURE DIRECTLY AT AN EQUIPMENT GROUNDING CONDUCTOR TERMINAL OF THE APPLICABLE DERIVED SYSTEM OR SERVICE. NEC 250-74: ISOLATED GROUND MUST TERMINATE AT AN EQUIPMENT GROUNDING TERMINAL AT THE SES OR PANEL
- 02) RUN 3/4" CDT FROM CASH REGISTER LOCATION TO COMPUTER FOR COMMUNICATION/ DATA CABLE
- 03) PROVIDE SPEAKER CABLES FROM EACH SPEAKER TO MUSIC SYSTEM AMPLIFIER LOCATION
- 04) EXTERIOR SIGNAGE: CONNECT TO LANDLORD'S TIMER IF AVAILABLE OR GC TO PROVIDE TIMER
- 05) PROVIDE CONNECTION TO BUILDING EMERGENCY NOTIFICATION SYSTEM AND PULL BOXES AS REQUIRED. PROVIDE STROBES IF REQUIRED AND ALL ELECTRICAL INCLUDING WIRING IN ACCORDANCE WITH NEC AND LOCAL CODES
- 06) ALL ELECTRICAL WORK SHALL BE IN ACCORDANCE WITH THE NATIONAL ELECTRICAL CODE AND ALL LOCAL CODES HAVING JURISDICTION.
- 07) ALL BRANCH CIRCUIT CONDUCTORS TO BE COPPER (SERVICE CONDUCTORS MAY BE ALUMINUM WITH SAME AMPACITY AS COPPER CONDUCTORS. RE-SIZE CONDUCTORS AND CONDUIT PER NEC)
- 08) ALL WIRES TO BE 2 #12, 1 #12 GND IN 1/2" EMT CONDUIT UNLESS OTHERWISE NOTED. RIGID CONDUIT REQUIRED WHERE EXPOSED BELOW 8 FEET A.F.F.
- 09) ALL EMPTY CONDUIT RUNS IN EXCESS OF 10 FEET SHALL BE PROVIDED WITH A PULL WIRE OR FISH TAPE/CORD.
- 10) CONTRACTOR SHALL VERIFY ALL DOOR SWINGS ARE CORRECT BEFORE INSTALLING LIGHT SWITCH OUTLETS.
- 11) ALL BRANCH CIRCUIT CONDUCTORS FROM THE PANEL TO THE FIRST OUTLET SHALL BE INCREASED TO THE NEXT LARGER SIZE WHERE THE LENGTH OF THE RIGID CONDUIT RUN EXCEEDS 100 FEET ON 120 AND 208 VOLT CIRCUIT.
- 12) THE CORRECT NUMBER OF WIRES MUST BE INDICATED FOR ALL CIRCUITS. ONLY THOSE WHERE CLARIFICATION IS NECESSARY, THE ELECTRICAL CONTRACTOR SHALL PROVIDE ALL WIRES NECESSARY FOR THE PROPOSED FUNCTION. THIS INCLUDES WHETHER INDICATED ON DRAWINGS OR NOT.
- 13) THE CONTRACTOR SHALL BE RESPONSIBLE FOR CORRECTLY PHASING THE CIRCUITS IN THE PANEL BOARDS. THREE PHASE CIRCUITS MAY BE COMBINED IN ONE CONDUIT WITH A COMMON NEUTRAL PROVIDED EACH CIRCUIT IS ON A DIFFERENT PHASE.
- 14) THE ELECTRICAL CONTRACTOR SHALL VERIFY THE TYPE OF CEILING SYSTEM WITH THE GENERAL CONTRACTOR TO INSURE THAT THE LIGHTING FIXTURES ARE COMPATIBLE WITH THE CEILING SYSTEM BEING INSTALLED. LIGHTING FIXTURES SHOULD NOT BE ORDERED UNTIL TYPE OF CEILING HAS BEEN VERIFIED.
- 15) ELECTRICAL REQUIREMENTS INDICATED ON DRAWINGS MAY DIFFER FROM ACTUAL EQUIPMENT FURNISHED. IF FURNISHED EQUIPMENT DIFFERS FROM RATINGS ON DRAWINGS CONTRACTOR SHALL NOTIFY ARCHITECT/ENGINEER FOR APPROPRIATE ACTION TO BE TAKEN.

EXTERIOR ELECTRICAL DISCONNECTS REQUIRE WEATHERPROOF PERMANENT LABELING AND APPROVED WEATHERPROOF COVERS

SHUNT TRIP BREAKERS ARE REQUIRED

IF REQUIRED BY CODE OR BY LANDLORD OR LOCAL AUTHORITY ALL INTERIOR LIGHTS TO BE EQUIPPED WITH AN AUTOMATIC CONTROL DEVICE TO SHUT OFF LIGHTING. THIS AUTOMATIC CONTROL DEVICE SHALL FUNCTION ON A SCHEDULED BASIS, USING TIME-OF-DAY, WITH AN INDEPENDENT PROGRAM SCHEDULE THAT CONTROLS THE INTERIOR LIGHTING! THE REQUIRED OVERRIDE CONTROL TO BE 2 HR MAX PER 2014 NEC AUTOMATIC LIGHTING SHUT-OFF

WATER HEATER AND WALK-IN PANEL UPDATES

*NOTE:
TYPE MC CABLE IS PERMITTED IN ACCORDANCE WITH THE NEC*

*NOTE:
CONTRACTOR SHALL COORDINATE HOOD EXHAUST FAN OPERATION WITH HOOD BEING SUPPLIED*

*NOTE:
CONTRACTOR TO CONFIRM AVAILABLE FAULT FROM UTILITY AND BRING ANY DISCREPANCIES TO THE ATTENTION OF THE ENGINEER*

*NOTE:
DRAWINGS SHALL COMPLY WITH IBC 2012 AND IECC 2014*

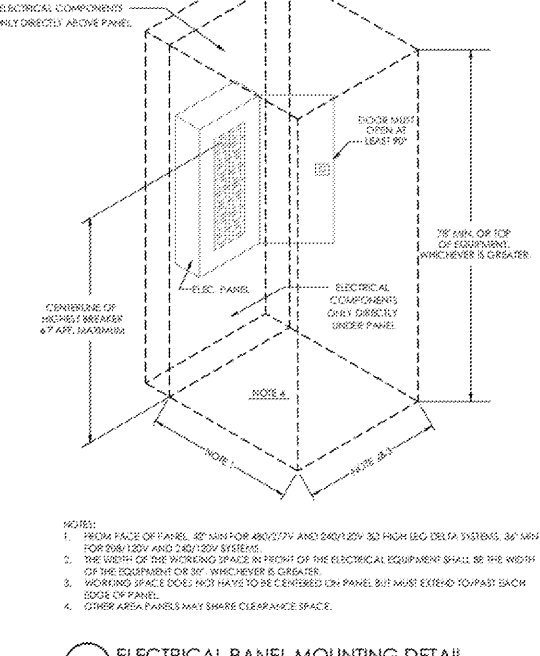
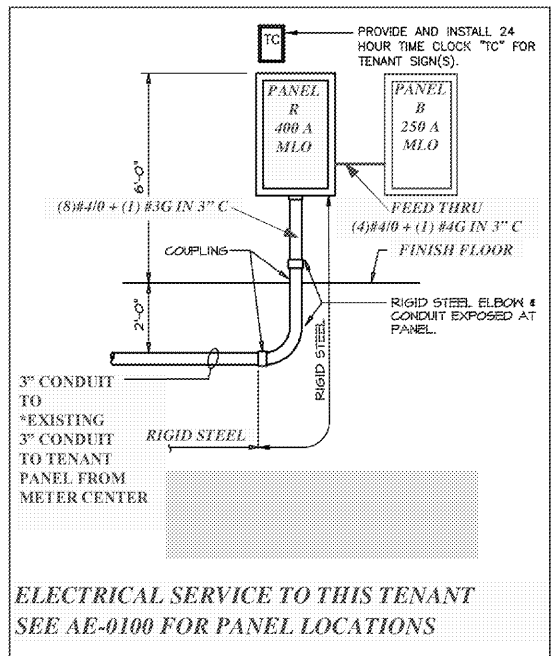
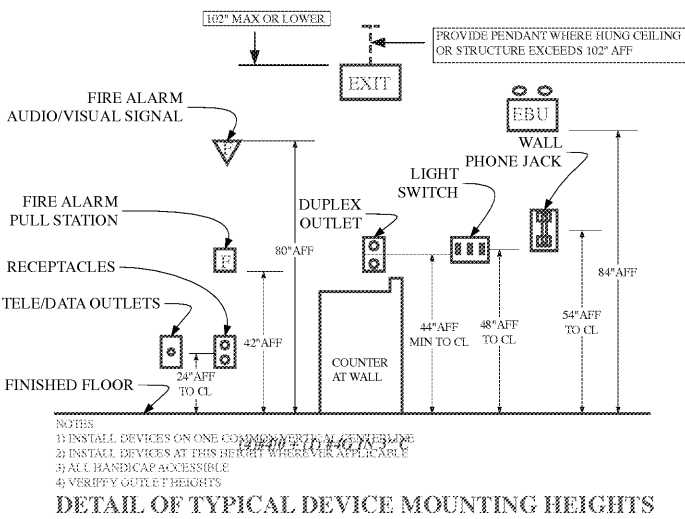
ELECTRICAL LEGEND

-
-
-
-
-
-
-
-
-
-
-
-
-

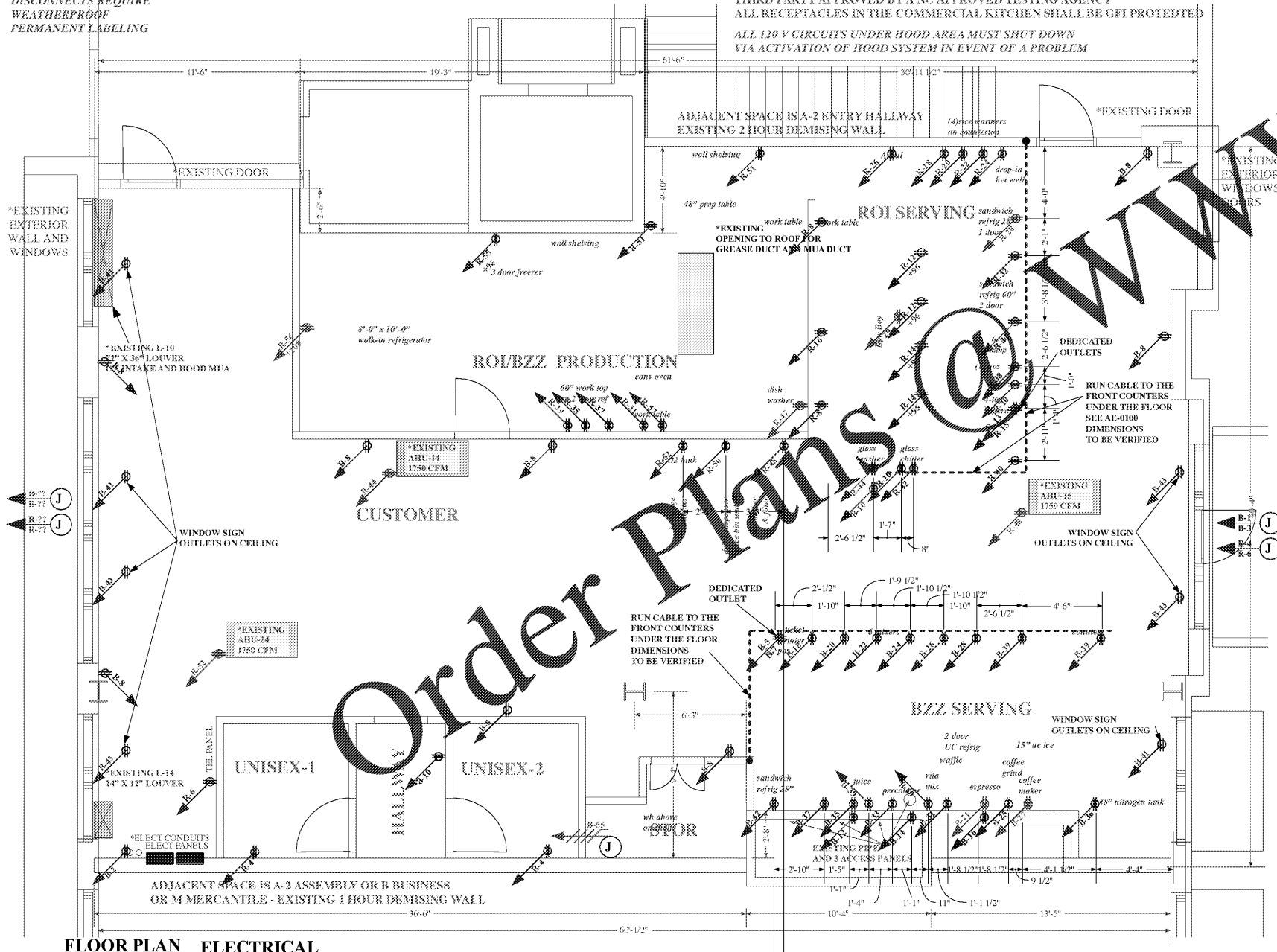
SEE AE-0601 FOR ELECTRICAL PANELS

GROUND FAULT CIRCUIT INTERRUPTER RECEPTACLE WITH FEED-THRU PROTECTION
GFCI DUPLEX RECEPTACLE SHOWN SHADED 125V-20A HUBBELL CAT#5262
RECEPTACLES IN TOILET ROOMS SHALL HAVE GFCI PROTECTION FOR PERSONNEL NEC 210.8(B)(1)

RECEPTACLES LOCATED IN "PRODUCTION" AND "SERVING" AREAS TO BE PROVIDED WITH GFCI PROTECTION
THE GROUND FAULT CIRCUIT INTERRUPTER SHALL BE INSTALLED IN A "READILY ACCESSIBLE LOCATION"



EXTERIOR ELECTRICAL DISCONNECTS REQUIRE WEATHERPROOF PERMANENT LABELING



THE 2020 NEC IS NOW BEING ENFORCED
ALL ELECTRICAL EQUIPMENT AND SERVICES MUST BE UL LABEL LISTED OR THIRD PARTY APPROVED BY A NC APPROVED TESTING AGENCY
ALL RECEPTACLES IN THE COMMERCIAL KITCHEN SHALL BE GFCI PROTECTED
ALL 120 V CIRCUITS UNDER HOOD AREA MUST SHUT DOWN VIA ACTIVATION OF HOOD SYSTEM IN EVENT OF A PROBLEM

2 ELECTRICAL PANEL MOUNTING DETAIL

NOTES

- 01) PROVIDE "CORD AND PLUG" CONNECTION PROVIDED BY MANUFACTURER OR PROVIDED AND INSTALLED BY ELECTRICAL CONTRACTOR PER MANUFACTURER'S WRITTEN INSTRUCTIONS TO MATCH RECEPTACLE PROVIDED BY ELECTRICAL CONTRACTOR
- 02) ALL CONTINUOUS LOADS CALCULATED AT GREATER THAN 125% PER NEC220-10
- 03) VERIFY NEC COMPLIANCE FOR EQUIPMENT GROUNDING IN RACEWAYS. METAL RACEWAYS SHALL BE EFFECTIVELY BONDED WHERE NECESSARY TO ENSURE ELECTRICAL CONTINUITY AND THE CAPACITY TO CONDUCT SAFELY ANY FAULT CURRENT LIKELY TO BE IMPOSED ON THEM. ANY NON-CONDUCTIVE PAINT, ENAMEL, OR SIMILAR COATING SHALL BE REMOVED AT THREADS, CONTACT POINTS AND CONTACT SURFACES OR BE CONNECTED BY MEANS OF FITTINGS DESIGNED SO AS TO MAKE SUCH REMOVAL UNNECESSARY
- 04) VERIFY ALL CO AND J-BOX HEIGHTS WITH EQUIPMENT SPECIFICATIONS
- 05) ALL CO'S WITHIN 72" OF SINKS TO BE GFCI
- 06) PROVIDE CEILING OUTLETS AT FRONT WINDOWS
- 07) PROVIDE 120V 20A GFCI WEATHERPROOF OUTLET AT ROOF TOP HVAC UNIT
- 08) ELECTRICIAN TO RUN ADDITIONAL CONDUIT TO FRONT DOOR AND REAR DOOR FOR DOOR BELL
- 09) ELECTRICIAN TO RUN ADDITIONAL CONDUIT TO FRONT FOR MOTION DETECTOR
- 10) ALL DIMENSIONS SHOWN ON PLANS ARE TO FINISH FACE OF WALLS