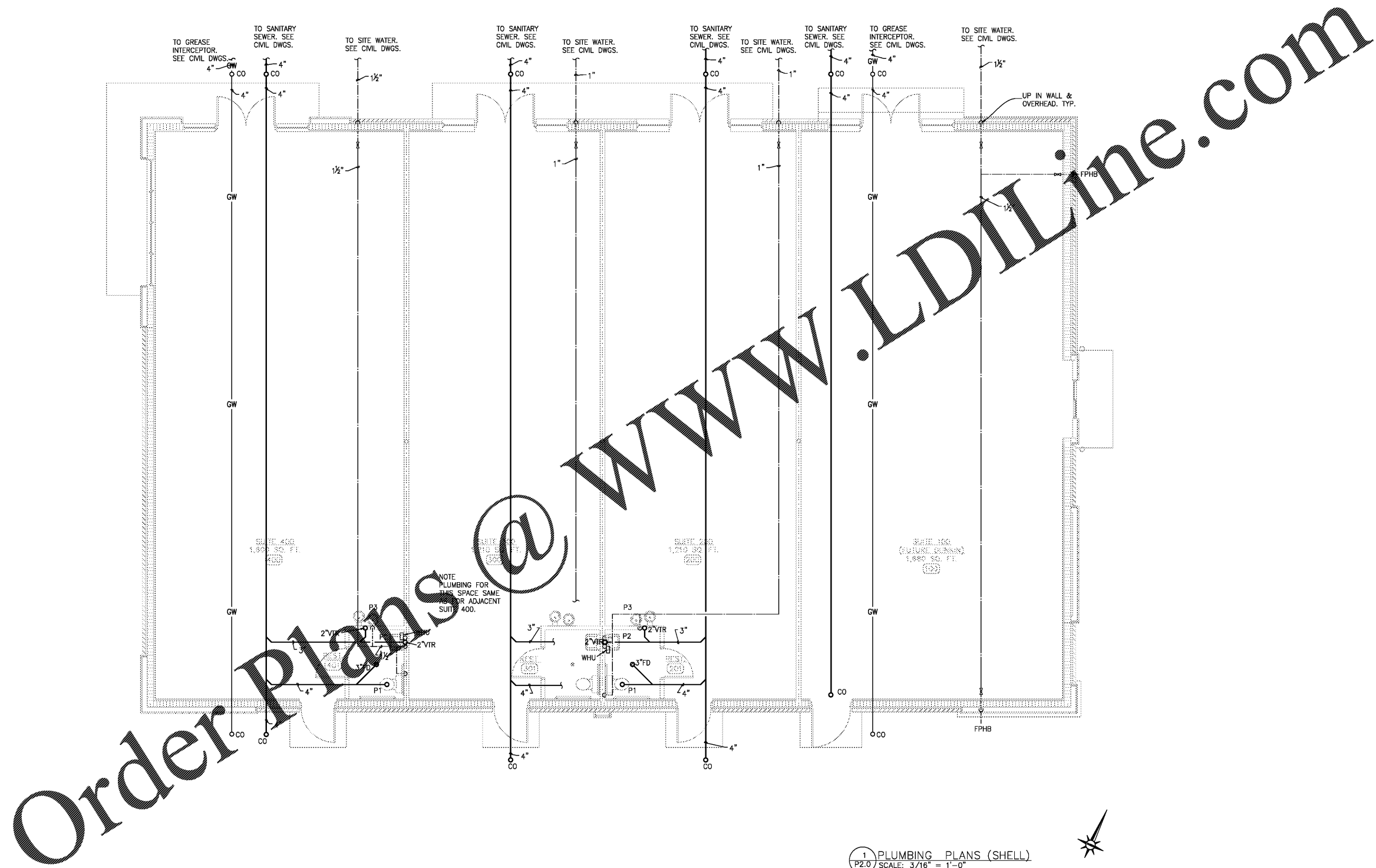


GREENCO of Augusta, Inc.
 Consulting Engineering
 P. O. Box 55
 Harlem, GA 30814
 706-556-0405
 706-449-0732 fax



1 PLUMBING PLANS (SHELL)
 P2.0 SCALE: 3/16" = 1'-0"



ARCHITECTS
 Christopher Booker & Associates, PC
 670 BROAD STREET, AUGUSTA, GA 30901 | P: (706) 798-6792 | WWW.CBARCHITECTSPC.COM

PROPOSED BUILDING SHELL &
 DUNKIN' DONUTS PC# 362912
 APS INVESTMENT, INC.
 5303 WRIGHTSBORO ROAD
 GROVETOWN, GEORGIA 30813



WASTE PLAN

DRWN BY	JG
CHKD BY	
DATE	JANUARY 13, 2021
REVISIONS	
JOB NO.	2052-A
SHEET NO.	

SHELL DESIGN

P2.0