



Revisions:

Proj. No.: 80702  
Date: 10/09/2020

Sheet Name:  
**ELECTRICAL  
PANEL  
SCHEDULES &  
SINGLE-LINE  
DIGRAM**

**E-601**

**Branch Panel: L**

Location: MAINTENANCE STORAGE 107  
Supply From: MDP  
Mounting: Surface  
Enclosure: Type 1  
Volts: 480Y/277  
Phases: 3  
Wires: 4  
# of Circuits: 18  
A.I.C. Rating: 14,000  
Mains Type: MCB  
Mains Rating: 250.0  
MCB Rating: 125.0

CKT	Circuit Description	Trip	Poles	A	B	C	Poles	Trip	Circuit Description	CKT
1	SPORTS LIGHTING - CIRCUIT A	30.0	3	6240	6240	6240	6240	3	30.0	SPORTS LIGHTING - CIRCUIT B
3	SPARE	20.0	3	0	0	0	0	3	30.0	SPARE
5	SPARE	--	--	0	0	0	0	--	--	SPARE
7	SPARE	--	--	0	0	0	0	--	--	SPARE
9	SPARE	--	--	0	0	0	0	--	--	SPARE
11	SPARE	--	--	0	0	0	0	--	--	SPARE
13	SPARE	--	--	0	0	0	0	--	--	SPARE
15	SPARE	--	--	0	0	0	0	--	--	SPARE
17	SPARE	--	--	0	0	0	0	--	--	SPARE
<b>Total Load:</b>				12.5 kVA	12.5 kVA	12.5 kVA				
<b>Total Amps:</b>				45 A	45 A	45 A				

Load Classification	Connected Load	Demand Factor	Estimated Demand	Panel Totals
LIGHTING	37440 VA	100.00%	37440 VA	<b>Total Conn. Load:</b> 37.4 kVA <b>Total Est. Demand:</b> 37.4 kVA <b>Total Conn.:</b> 45 A <b>Total Est. Demand:</b> 45 A

Notes:

**Branch Panel: A**

Location: MAINTENANCE STORAGE 107  
Supply From: T-1  
Mounting: Surface  
Enclosure: Type 1  
Volts: 208Y/120  
Phases: 3  
Wires: 4  
# of Circuits: 54  
A.I.C. Rating: 14,000  
Mains Type: MCB  
Mains Rating: 225.0  
MCB Rating: 200.0

CKT	Circuit Description	Trip	Poles	A	B	C	Poles	Trip	Circuit Description	CKT
1	LIGHTING - MENS/FAMILY	20.0	1	802	6240				AHU-1	2
3	LIGHTING - WOMEN	20.0	1		576	6240				4
5	LIGHTING - CONCESSIONS/STORAGE	20.0	1			648	3333			6
7	EXTERIOR LIGHTING	20.0	1	516	3333			3	70.0	WATER HEATER - EWH
9	LIGHTING - MAINT. STORAGE/JANITOR	20.0	1		534	3333				10
11	LIGHTING - BREEZEWAY	20.0	1			216	975	2	20.0	CU-1/AC-1
13	CONCESSIONS AIR CIRCULATOR	20.0	1	1176	975					14
15	RECEPT - MAINTENANCE STORAGE	20.0	1		540	1500		1	20.0	HAND DRYER - WOMEN
17	RECEPT - EXTERIOR - EAST	20.0	1			900	1500	1	20.0	HAND DRYER - MEN
19	RECEPT - EXTERIOR - WEST	20.0	1	360	1500			1	20.0	HAND DRYER - MEN
21	RECEPT - MENS/FAMILY	20.0	1		720	1500		1	20.0	HAND DRYER - FAMILY
23	RECEPT - WOMEN 111	20.0	1			720	1500	1	20.0	HAND DRYER - FAMILY
25	RECEPT CONCESSIONS - POPCORN MKR	20.0	1	360	60					26
27	RECEPT CONCESSIONS 101	20.0	1		720	180		1	20.0	PLUMBING HEAT TRACE
29	RECEPT CONCESSIONS - ICE MACHINE	15.0	1			950	1200	1	20.0	WATER COOLER
31	RECEPT CONCESSIONS 101	20.0	1	360	360					28
33	RECEPT CONCESSIONS - BEVERAGE	20.0	1		1200	330				30
35	RECEPT CONCESSIONS - REFRIGERATOR	20.0	1					2	20.0	RECEPT - TELECOM
37	RECEPT CONCESSIONS - FREEZER	20.0	1	1000				1	20.0	PEDESTRIAN LIGHTING ON SPORTS POLES
39	RECEPT CHASE/JANITOR 105	20.0	1	360	10			1	20.0	ENTRANCE SIGN POWER
41	RECEPT SOUTH COLUMNS	20.0	1			1200	72	1	20.0	IRRIGATION CONTROLLER
43	RECEPT SOUTH COLUMNS	20.0	1	1200				1	20.0	FLAGPOLE LIGHTING
45	SPORTS LIGHTING CONTROL CIRCUIT	20.0	1							42
47										44
49										46
51										48
53										50
<b>Total Load:</b>				19.2 kVA	19.0 kVA	13.6 kVA				
<b>Total Amps:</b>				167 A	165 A	114 A				

Load Classification	Connected Load	Demand Factor	Estimated Demand	Panel Totals
HVAC	12480 VA	65.00%	8112 VA	<b>Total Conn. Load:</b> 51.9 kVA <b>Total Est. Demand:</b> 39.1 kVA <b>Total Conn.:</b> 144 A <b>Total Est. Demand:</b> 109 A
Other	23930 VA	70.00%	16751 VA	
RECEPT	12401 VA	90.32%	11200 VA	
LIGHTING	3064 VA	100.00%	3064 VA	
EQUIPMENT	0 VA	0.00%	0 VA	

Notes:

**Distribution Panel: MDP**

Location: MAINTENANCE STORAGE 107  
Supply From: T-1  
Mounting: Surface  
Enclosure: Type 1  
Volts: 480Y/277  
Phases: 3  
Wires: 4  
A.I.C. Rating: 14,000  
Mains Type: MCB  
Mains Rating: 400.0  
MCB Rating: 250.0

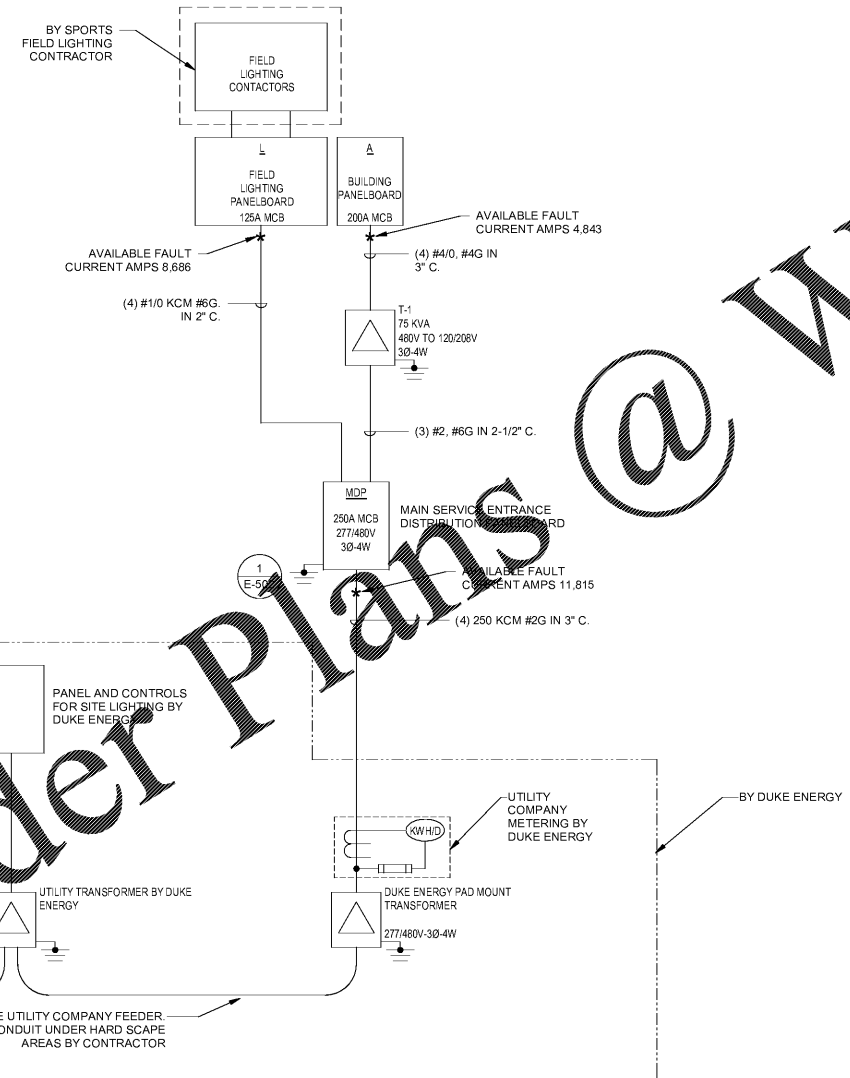
Notes:

CKT	Circuit Description	# of Poles	Trip Rating	Load	Remarks
1	TRANSFORMER T-1	3	110.0	51875 VA	
2	HP-1	3	15.0	5318 VA	
3	EH-1	1	20.0	3463 VA	
4	PANEL L - SPORTS LIGHTING	3	125.0	37440 VA	
5					
6					
7					
8					
9					
10					
11					
12					
13					
14					
15					
16					
17					
18					
19					
20				98096 VA	
				118.0	

Legend:

Load Classification	Connected Load	Demand Factor	Estimated Demand	Panel Totals
HVAC	21261 VA	65.00%	13820 VA	<b>Total Conn. Load:</b> 98096 VA <b>Total Est. Demand:</b> 82275 VA <b>Total Conn.:</b> 118.0 <b>Total Est. Demand:</b> 99.0
Other	23930 VA	70.00%	16751 VA	
RECEPT	12401 VA	90.32%	11200 VA	
LIGHTING	40504 VA	100.00%	40504 VA	
EQUIPMENT	0 VA	0.00%	0 VA	

Notes:



**Order Plans @**

**1 SINGLE LINE DIAGRAM**  
SCALE: NTS