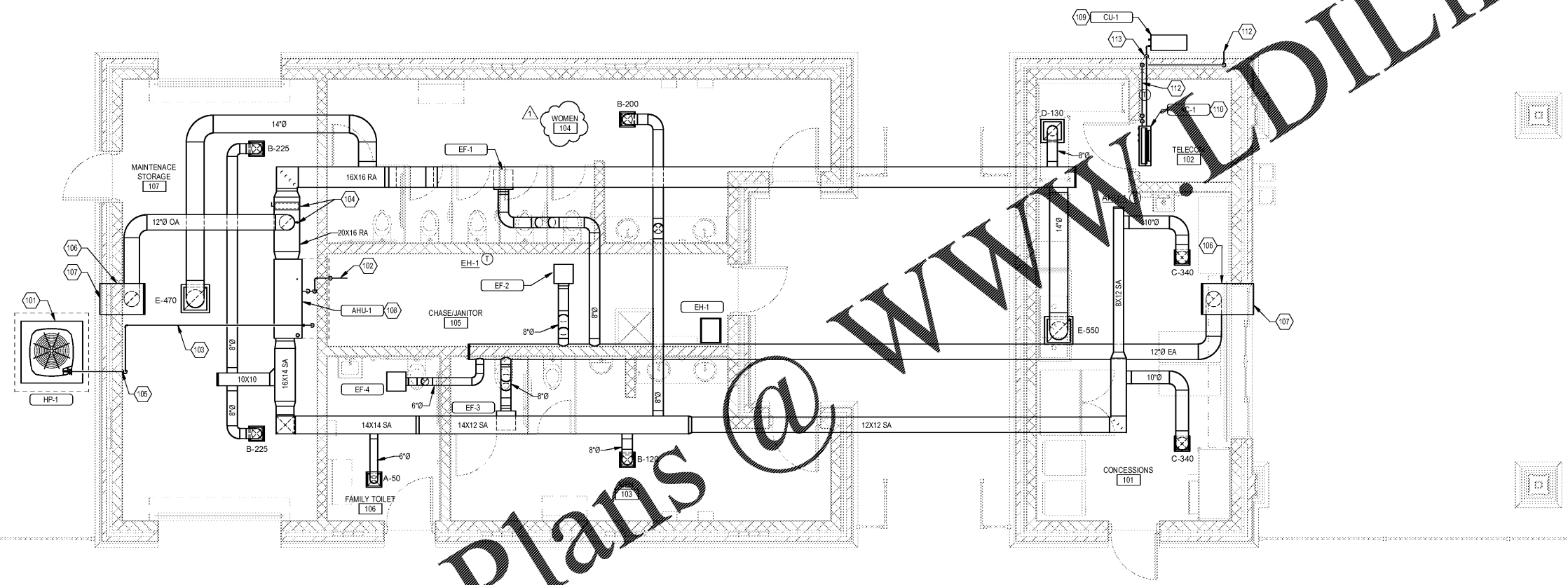


**REFERENCE KEYNOTES:**

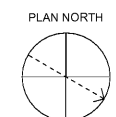
- 101 CONCRETE PAD
- 102 CONDENSATE DRAIN P-TRAP SIZED TO MATCH CONNECTION ON UNIT. EXTEND DRAIN PIPING DOWN ALONG WALL TO FLOOR DRAIN IN JANITOR'S CLOSET.
- 103 REFRIGERANT PIPING IN ATTIC SPACE FROM HP-1 TO AHU-1. INSTALL PER MANUFACTURER'S REQUIREMENTS.
- 104 MANUAL BALANCING DAMPER. BALANCE TO 350 CFM IN THE OUTSIDE AIR DUCT AND 1150 CFM IN THE RETURN DUCT.
- 105 EXTEND REFRIGERANT PIPING DOWN FROM ATTIC TIGHT TO WALL NEAR FLOOR LEVEL AND EXTEND THROUGH WALL TO UNIT ON GRADE.
- 106 24" X 16" EXHAUST OR OUTSIDE AIR INTAKE PLENUM CONNECTED TO LOUVER. PLENUM WIDTH TO BE WIDE ENOUGH TO ALLOW 12" DIA. DUCT CONNECTION INTO BOTTOM OF PLENUM.
- 107 SEE ARCHITECTURAL PLANS FOR LOUVER SIZE AND LOCATION. PROVIDE GALVANIZED SHEET METAL SHUT-OFF PANELS IN UNUSED PORTS OF LOUVER. PROVIDE MIN 2" THICK R-5 POLYURETHANE INSULATION.
- 108 AHU-1 OUTSIDE AIR INTAKE ATTIC SPACE. SEE ARCHITECTURAL PLANS FOR PLATE ROOM AND ATTIC ACCESS DOOR LOCATION.
- 109 MOUNT CONDENSING UNIT ON WALL APPROXIMATELY 6' ABOVE GRADE WITH BRACKETS PROVIDED BY UNIT MANUFACTURER.
- 110 MOUNT AC UNIT ON WALL ABOVE DOOR APPROXIMATELY 8' AFF.
- 111 COPPER CONDENSATE DRAIN SIZED TO MATCH CONNECTION ON UNIT. EXTEND PIPING THROUGH AIR GAP AT EXTERIOR WALL. PENETRATING PIPING 12" ABOVE GRADE INTO ROOF GUTTER DOWNSPOUT.
- 112 REFRIGERANT PIPING FROM AC UNIT EXTENDED THROUGH EXTERIOR WALL TO CONNECTION ON CONDENSING UNIT.

**GENERAL NOTES:**

- 1. ALL DUCTWORK SHOWN IS IN ATTIC SPACE. COORDINATE DUCT LAYOUT WITH STRUCTURAL TRUSS FRAMING LAYOUT. DUCTWORK WILL NEED TO BE ROUTED THROUGH TRUSS WEBBING.
- 2. COORDINATE AIR DEVICE, EXHAUST FAN, AND HEATER PLACEMENT IN CEILING WITH TRUSS FRAMING AND CEILING FRAMING. DIFFUSERS SHALL BE LOCATED BETWEEN TRUSS AND CEILING FRAMING.



**MECHANICAL FLOOR PLAN**  
SCALE: 1/4" = 1'-0"



Order Plans @ WWW.LDILine.com

Lancaster County, South Carolina  
**Indian Land Soccer Complex**  
10167 Harrisburg Road  
Indian Land, SC 29107

Revisions:  
1 County Permit Review 1 11/20/20

Proj. No.: 80702  
Date: 10/09/2020

Sheet Name:  
**MECHANICAL FLOOR PLAN**

**M-101**