



Lancaster County, South Carolina
Indian Land Soccer Complex
Lancaster County Parks & Recreation Soccer Complexes
10167 Harrisburg Road
Indian Land, SC 29707

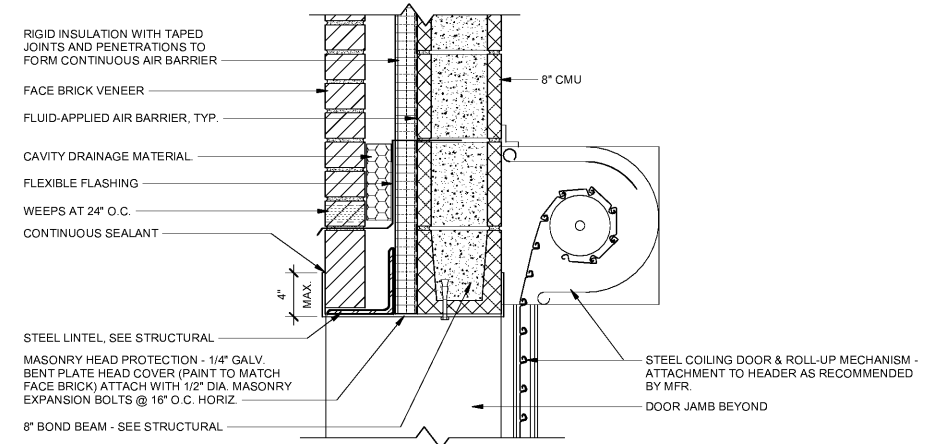
Revisions:

Proj. No.: 080702
Date: 10/09/2020

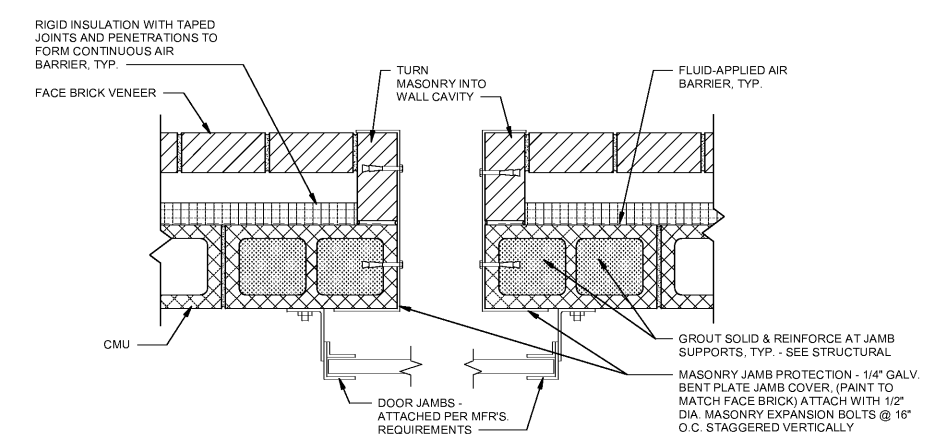
Sheet Name:
DOOR SCHEDULE & DETAILS

A-602

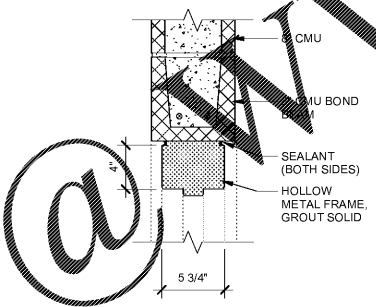
DOOR NO.	ROOM	DOOR TYPE	DOOR						FRAME						HARDWARE SET	SIGNAGE TYPE	NOTES
			WIDTH	HEIGHT	THICKNESS	MATERIAL	FINISH	UNDER CUT	TYPE	MATERIAL	FINISH	HEAD	JAMB	SILL			
101	CONCESSION	F	3'-0"	7'-0"	1 3/4"	INSUL MTL	PT-2		HM1	HM	PT-2	3/A-602	4/A-602	7/A-602	HDW3	C	FACTORY FINISH COLOR TO MATCH PT-2
101B	CONCESSION	OHC	10'-0"	4'-4 3/8"			PT-2				3/A-311		3/A-311				
102	TELECOM	F	3'-0"	7'-0"	1 3/4"	HM	PT-2	3/4"	HM1	HM	PT-2	5/A-602	6/A-602		HDW4	C	
103	MEN	F	3'-0"	7'-0"	1 3/4"	INSUL MTL	PT-2		HM1	HM	PT-2	3/A-602	4/A-602	7/A-602	HDW1	A	
104	WOMEN	F	3'-0"	7'-0"	1 3/4"	INSUL MTL	PT-2		HM1	HM	PT-2	3/A-602	4/A-602	7/A-602	HDW1	A	
105	CHASE/JANITOR	L1	3'-0"	7'-0"	1 3/4"	INSUL MTL	PT-2		HM1	HM	PT-2	3/A-602	4/A-602	7/A-602	HDW3	C	
106	FAMILY TOILET	F	3'-0"	7'-0"	1 3/4"	INSUL MTL	PT-2		HM1	HM	PT-2	3/A-602	4/A-602	7/A-602	HDW2	B	
107A	MAINTENANCE STORAGE	OH	8'-0"	7'-4"			PT-2				1/A-602	2/A-602				FACTORY FINISH COLOR TO MATCH PT-2	
107B	MAINTENANCE STORAGE	OH	8'-0"	7'-4"			PT-2				1/A-602	2/A-602				FACTORY FINISH COLOR TO MATCH PT-2	
107C	MAINTENANCE STORAGE	F	3'-0"	7'-0"	1 3/4"	INSUL MTL	PT-2		HM1	HM	PT-2	3/A-602	4/A-602	7/A-602	HDW3	C	



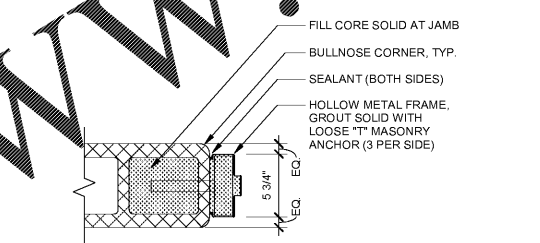
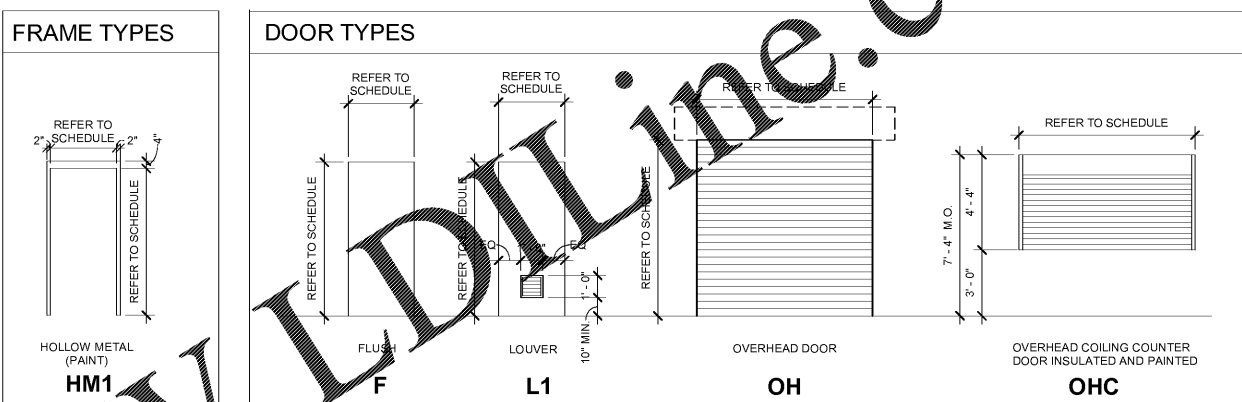
1 EXTERIOR COILING DOOR - HEAD DETAIL
SCALE: 1 1/2" = 1'-0"



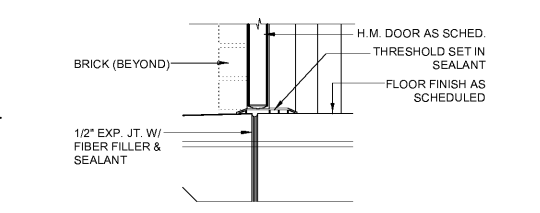
2 EXTERIOR COILING DOOR - JAMB DETAIL
SCALE: 1 1/2" = 1'-0"



5 HEAD DETAIL
SCALE: 1 1/2" = 1'-0"

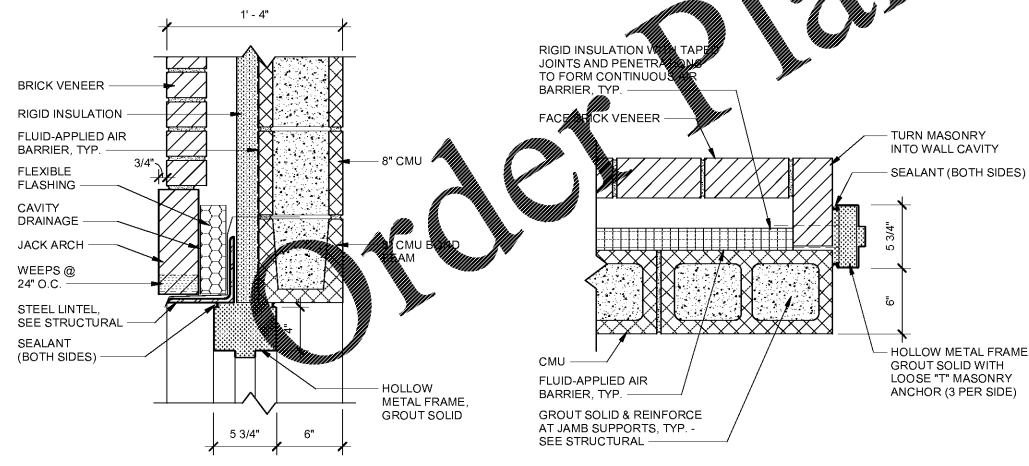


6 JAMB DETAIL
SCALE: 1 1/2" = 1'-0"

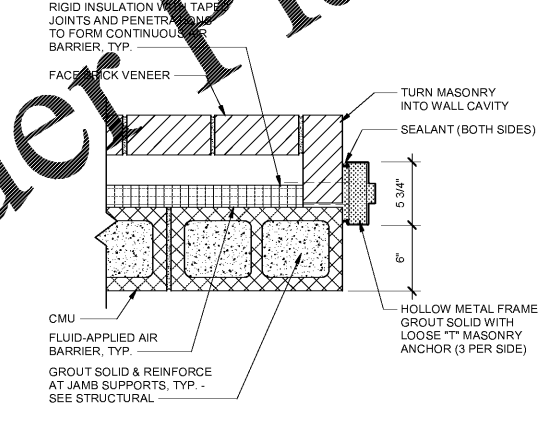


7 SILL DETAIL
SCALE: 1 1/2" = 1'-0"

HARDWARE SCHEDULE		DOOR GENERAL NOTES	
HDW 1 - EACH TO HAVE:	<ul style="list-style-type: none"> 3 Heavy Duty Hinges, Stanley CB199 (32D) 4.5x4.5 1 Push/Pull Plate, Rockwood 110x73C/73CL (32D) 1 Toe Pull, Rockwood FP1230 (32D) 1 Deadlock, Corbin Russwin DL3017 w/ ANSI Strike (26D) 1 Heavy Duty Closer, Corbin Russwin DC8200-A10 (26D) 1 Kick Plate, Rockwood K1050-4 (32D) 1 SET Silencers, Ives SR64 1 Threshold, Zero 65-A-EV3-222-36 1 SET Weatherstripping, Zero 8144S-BK-17 	HDW 4 - EACH TO HAVE:	<ul style="list-style-type: none"> 3 EA Heavy Duty Hinges, Stanley CB199 (32D) 4.5x4.5 1 Cylindrical Lever Lockset, Corbin Russwin CL3357 NOT PUMPED 1 HES 8000 Electric Strike by Security Contractor 1 SET Silencers, Ives SR64
HDW 2 - EACH TO HAVE:	<ul style="list-style-type: none"> 3 Heavy Duty Hinges, Stanley CB199 (32D) 4.5x4.5 1 Cylindrical Lever Lockset, Corbin Russwin CL3391 w/ ANSI Strike (26D) 1 Heavy Duty Closer, Corbin Russwin DC8200-A10 (26D) 1 Push Plate, Rockwood 70C-RKW (32D) 1 Kick Plate, Rockwood K1050 (Interior) (32D) 1 SET Silencers, Ives SR64 1 Threshold, Zero 65-A-EV3-222-36 1 SET Weatherstripping, Zero 8144S-BK-17 	<ol style="list-style-type: none"> HOLLOW METAL FRAMES SHALL BE SOLID GROUTED AT MASONRY CONDITIONS, TROWLED NOT PUMPED. DOORS AND FRAMES SHALL BE FACTORY PRIMED, FIELD PAINTED. SEE MECHANICAL DRAWINGS FOR LOUVER NET FREE AREA REQUIREMENTS. HARDWARE SHALL BE US32D SATIN STAINLESS STEEL OR US26D SATIN CHROMIUM PLATED FINISH UNLESS OTHERWISE NOTED. SPECIFIC REFERENCES TO MANUFACTURER PRODUCTS ARE FOR BASIS-OF-DESIGN. SEE SPECIFICATIONS FOR ALLOWABLE MANUFACTURERS. PROVIDE 7-PIN INTERCHANGABLE CORES (IC) FOR ALL CYLINDERS AND KEYING. 	
HDW 3 - EACH TO HAVE:	<ul style="list-style-type: none"> 3 Heavy Duty Hinges, Stanley CB199 (32D) 4.5x4.5 1 Cylindrical Lever Lockset, Corbin Russwin CL3357 1 HES 8000 Electric Strike by Security Contractor 1 Heavy Duty Closer, Corbin Russwin DC8210-A14 (26D) 1 SET Silencers, Ives SR64 1 Threshold, Zero 65-A-EV3-222-36 1 SET Weatherstripping, Zero 8144S-BK-17 1 Protection Plate, Ives 8402-630, 34x36 (Interior) 		



3 HEAD DETAIL
SCALE: 1 1/2" = 1'-0"



4 JAMB DETAIL
SCALE: 1 1/2" = 1'-0"

- SIGN LEGEND NOTES**
- SIGNAGE REPRESENTED IN THESE DOCUMENTS ARE TO BE USED FOR DIAGRAMMATIC AND INFORMATIONAL PURPOSES ONLY.
 - SIGNAGE MANUFACTURER SHALL PREPARE SHOP DRAWINGS AND SUBMIT TO ARCHITECT WITH SAMPLES FOR APPROVAL BEFORE COMMENCING WITH MANUFACTURING AND INSTALLATION.
 - ALL SIGNS SHALL COMPLY WITH AMERICANS WITH DISABILITIES ACCESSIBILITY ACT GUIDELINES (ADAAG).
 - SIGNAGE SHALL BE ON A DARK BROWN BACKGROUND. COLOR SAMPLES SHALL BE SUBMITTED TO THE ARCHITECT FOR THE OWNER'S APPROVAL.
 - WALL MOUNTING SYSTEM SHALL BE INSTALLED/ADHERED PER MANUFACTURERS REQUIREMENTS.
 - THE SIGN MOUNTING LOCATION CRITERIA SHALL COMPLY WITH ADAAG REQUIREMENTS, CHAPTER 11 OF 2015 IBC, AND ANSI A117.1.1(2017)

SIGN LEGEND

SIGN TYPE 'A' = 6"x12"
SIGN TYPE 'B' = 10"x10"
SIGN TYPE 'C' = 6"x12"