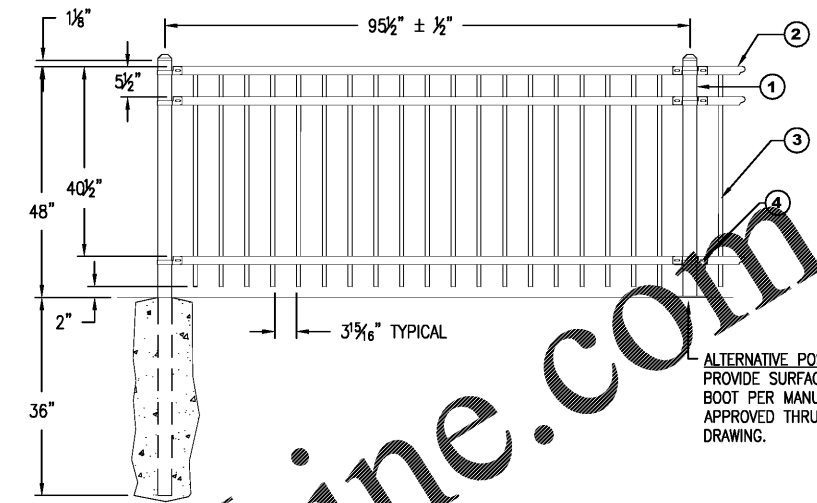


△ Revisions:

Proj. No.: 80702  
Date: 10/13/2020

Sheet Name:  
Site Details



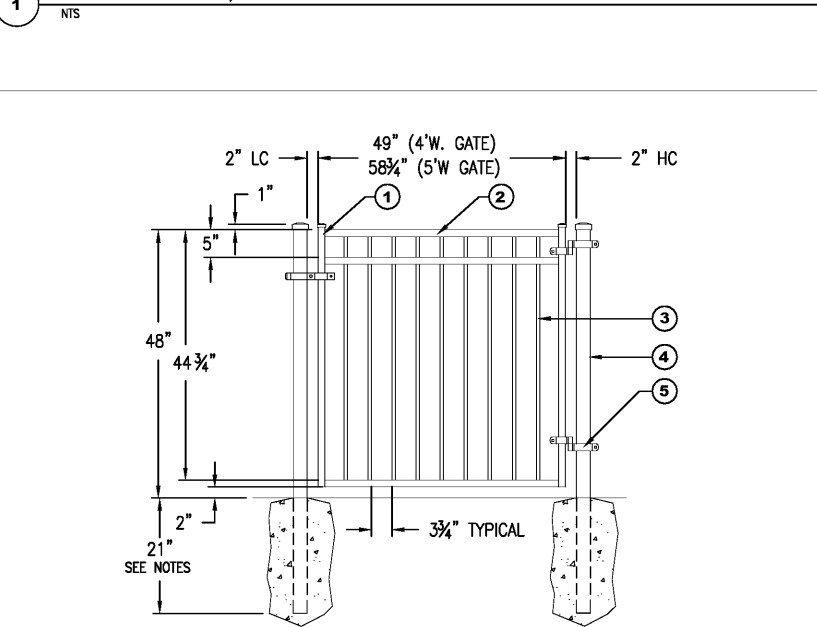
ALTERNATIVE POST SETTING:  
PROVIDE SURFACE MOUNT  
BOOT PER MANUFACTURER,  
APPROVED THRU SHOP  
DRAWING.

PANEL BRACKET OPTIONS	POST TO POST
BX114 LINE BRACKET	*95 1/2" ± 1/2"
BX111 FLAT MOUNT BRACKET	*95 1/2" ± 1/2" 2 1/2"
BX113 SWIVEL BRACKET**	*96" ± 1/2" 3"
	*97" ± 1/2" 2 1/2"
	*97 1/2" ± 1/2" 3"

NOTE: When using swivel brackets on either or both ends of a panel installation, care must be taken to ensure the spacing between post and adjoining pickets meets applicable codes. This may require trimming one or both ends of the panel as needed.  
POST NOTE: In locations subject to freezing, where posts are grouted into core-drilled holes, a 1/2" diameter hole should be drilled in the post approximately 1/2" above elevation to allow for drainage of built-up ground water. The drilled hole must be wiped clean and dry and sprayed with AMERISTAR™ zinc rich primer and AMERISTAR™ color match finish.  
FROST LINE: Footer depth shown is minimum recommendation. In some cases local restrictions of freezing weather conditions may require a greater depth.  
\*PANEL RACKING: Drawing shows fence panel at level ground elevation; for installations that must be racked to follow sloping grades, the post spacing dimension shown must be measured along the grade.

- ① 2 1/2" x 16ga. POST
- ② RIBBED CHANNEL  
1 1/2" x 1 1/8" x 14ga.
- ③ 3/8" x 18ga PICKET
- ④ BX112 END BRACKET

**ORNAMENTAL FENCE PANEL**  
3 RAIL MAJESTIC, AMERISTAR MONTAGE PLUS OR EQUAL

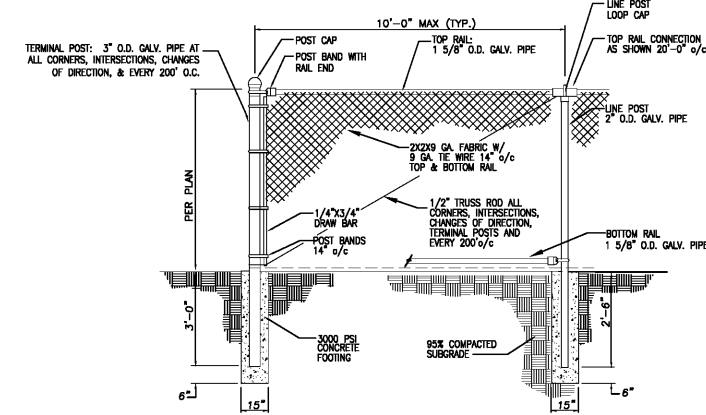


- ① 1 1/4" x 16ga. GATE END
- ② U CHANNEL RAIL  
1 1/8" x 1 1/4" x 14ga.
- ③ 3/8" x 18ga. PICKET
- ④ \*2 1/2" x 16ga.  
(2" x 16 ga POST OPTION)
- ⑤ \*GATE HARDWARE  
HX301 & HX411  
HX404 & HX413  
(SGBS2)

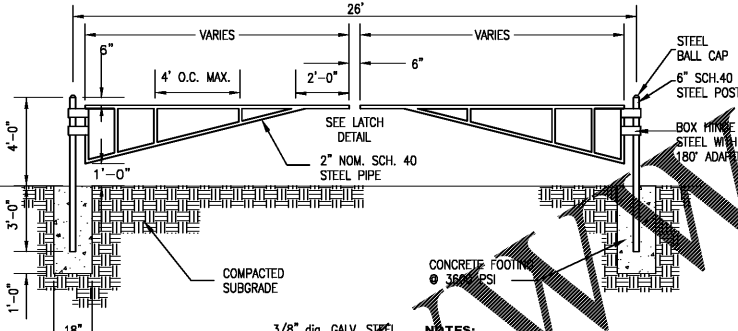
POST NOTE: In locations subject to freezing, where posts are grouted into core-drilled holes, a 1/2" diameter hole should be drilled in the post approximately 1/2" above elevation to allow for drainage of built-up ground water. The drilled hole must be wiped clean and dry and sprayed with AMERISTAR™ zinc rich primer and AMERISTAR™ color match finish.

FROST LINE: Footer depth shown is minimum recommendation. In some cases local restrictions of freezing weather conditions may require a greater depth.

**ORNAMENTAL FENCE - GATE**  
3 RAIL SINGLE GATE MAJESTIC, AMERISTAR MONTAGE PLUS OR EQUAL

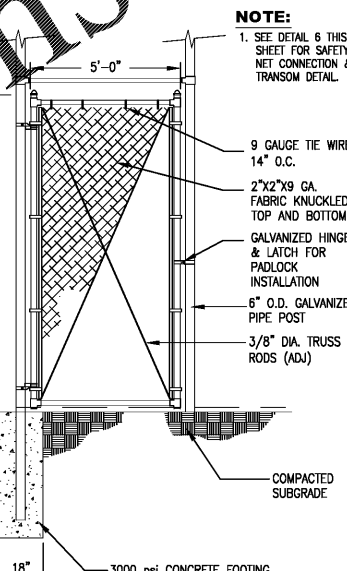


**BLACK VINYL CHAIN LINK FENCE**



**SERVICE GATE AT ENTRY**

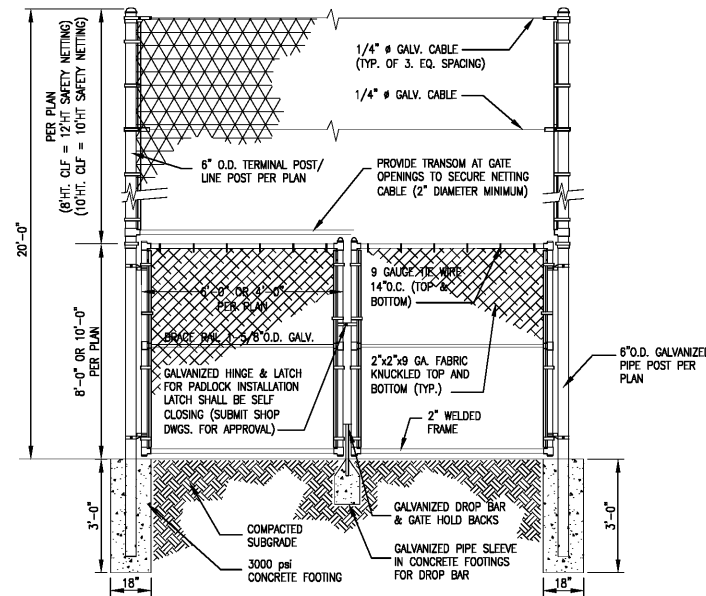
- NOTES:
1. PROVIDE 3" O.D. KEEPER POST (2 REQUIRED) SET IN 6" DEEP X 18" DIA. CONCRETE FOOTING. PROVIDE HINGE SWING ADAPTOR TO OPEN POSITION.
  2. TIES SHALL INCLUDE KEEPER POSTS TO SECURE ACCESS. KEEPER POST SHALL BE 6" SCH. 40 STEEL POST INSTALLED WITH 18"x24" FOOTING AND SHALL INCLUDE CHAIN TO SECURE GATE ARM. (ONE KEEPER POST PER ARM).
  3. GATE AND HARDWARE SHALL BE GALVANIZED.



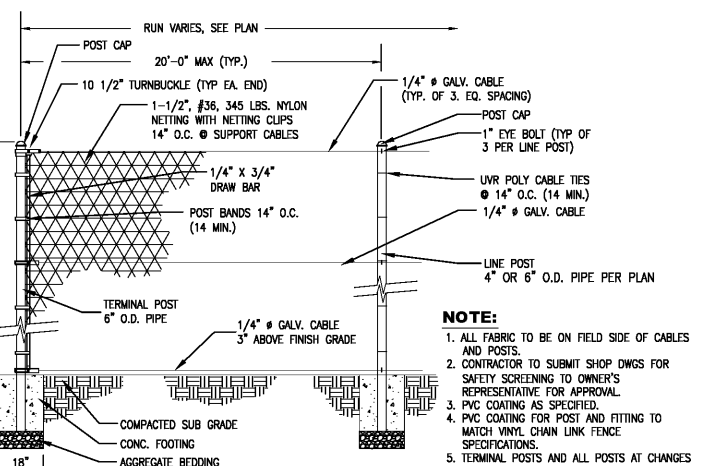
**5' WIDE GATE AND 12' SAFETY NET**



**CONCRETE WALK/ POST/TURF EDGE**

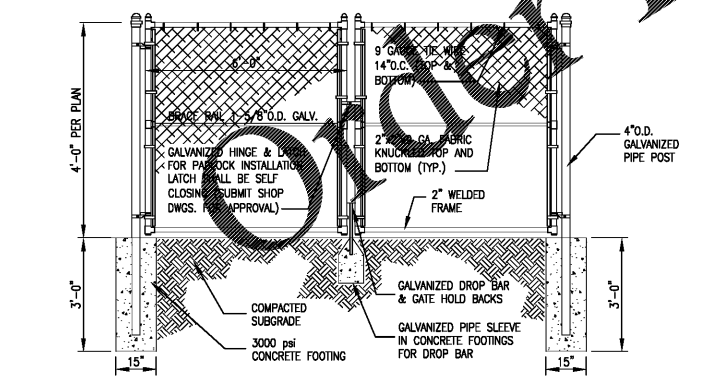


**SERVICE GATE AND SAFETY NET**



**20' SAFETY NET**

- NOTE:
1. ALL FABRIC TO BE ON FIELD SIDE OF CABLES AND POSTS.
  2. CONTRACTOR TO SUBMIT SHOP DWGS FOR SAFETY SCREENING TO OWNER'S REPRESENTATIVE FOR APPROVAL.
  3. PVC COATING AS SPECIFIED.
  4. PVC COATING FOR POST AND FITTING TO MATCH VINYL CHAIN LINK FENCE SPECIFICATIONS.
  5. TERMINAL POSTS AND ALL POSTS AT CHANGES IN DIRECTIONS (SHARED CHAIN LINK/NETTING FIELDS 1 & 3) SHALL BE 6" DIAMETER (VINYL COATED POSTS AND FITTINGS)



**12' WIDE SERVICE GATE**