



Lancaster County, South Carolina  
**Indian Land Soccer Complex**  
10167 Harrisburg Road  
Indian Land, SC 29707

Revisions:  
△ PER REVIEW COMMENTS-1 01/15/21

Proj. No.: 80702  
Date: 10/13/2020

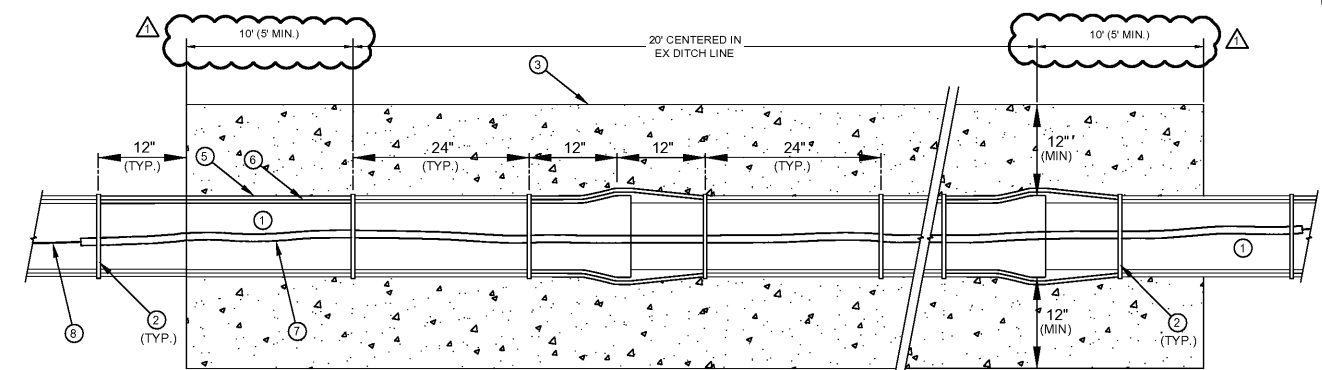
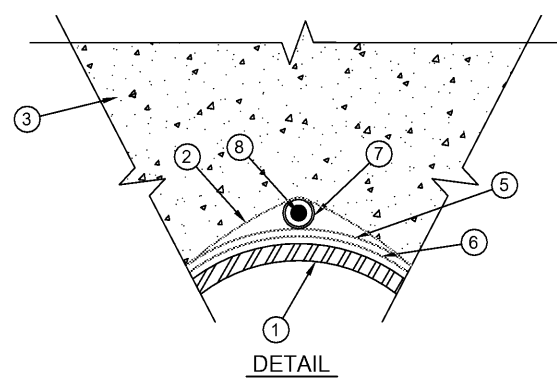
Sheet Name:  
Utility Details -  
Sanitary Sewer

**L-606**

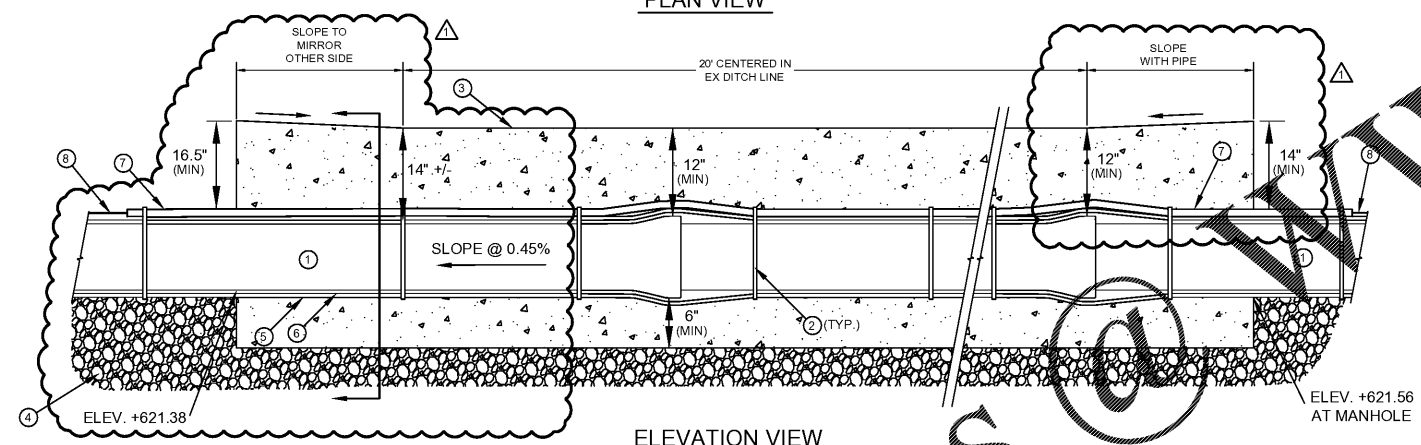
NO.	DESCRIPTION
1	DUCTILE IRON PIPE
2	HDPE ADHESIVE TAPE OR HDPE ZIPLOCK TIE
3	CONCRETE ENCASEMENT (1'c = 3600 PSI MIN.)
4	STONE STABILIZATION MATERIAL - AS REQUIRED
5	HIGH DENSITY CROSS LAMINATED POLYETHYLENE FILM (HDCLPE) - 4 MILS - TUBE - AWWA C105
6	HIGH DENSITY CROSS - LAMINATED POLYETHYLENE FILM (HDCLPE) - 4 MILS - TUBE - AWWA C105
7	1-INCH DIA. SCH. 40 PVC ELECTRICAL CONDUIT - SOLVENT WELD JOINTS
8	AWG #12 GAUGE COPPER TRACER WIRE WITH BLUE INSULATION - (30 MIL HDPE)

NOTES:  
A. CONCRETE ENCASEMENT SHALL ONLY BE INSTALLED WHERE SHOWN ON APPROVED PLANS OR WITH PRIOR APPROVAL BY CMUD ENGINEER.  
B. THIS RESTRICTION IS IN PLACE DUE TO THE INABILITY TO EASILY MAINTAIN / REPAIR OR TAP A MAIN ENCASED IN CONCRETE.

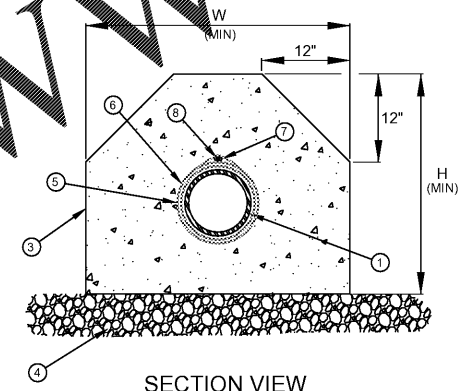
PIPE DIAMETER (INCHES)	WIDTH (W) (MINIMUM) (INCHES)	HEIGHT (H) (MINIMUM) (INCHES)	CONCRETE VOLUME APPROX. PER L.F.	
			FT <sup>3</sup> / LF	CY / LF
8	36	30	6.05	0.22



PLAN VIEW



ELEVATION VIEW



SECTION VIEW

1 CONCRETE ENCASEMENT DETAIL  
NTS

AT CREEK CROSSING ON SCHOOL PROPERTY (SEE SHEET L-602)

Order Plans @ [WWW.LDILine.com](http://WWW.LDILine.com)