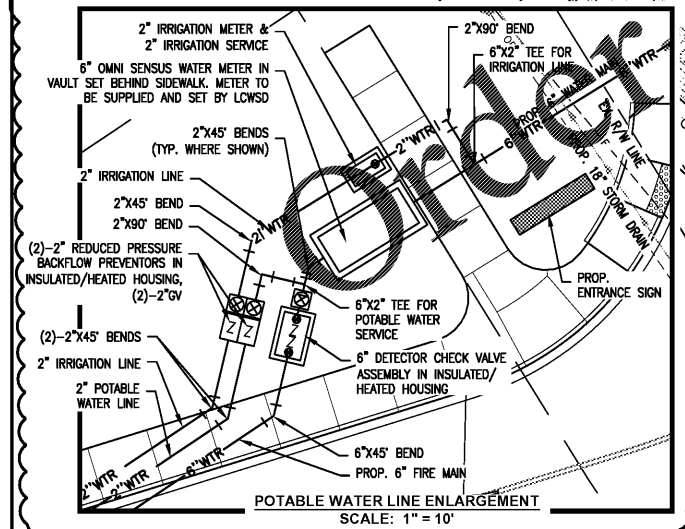
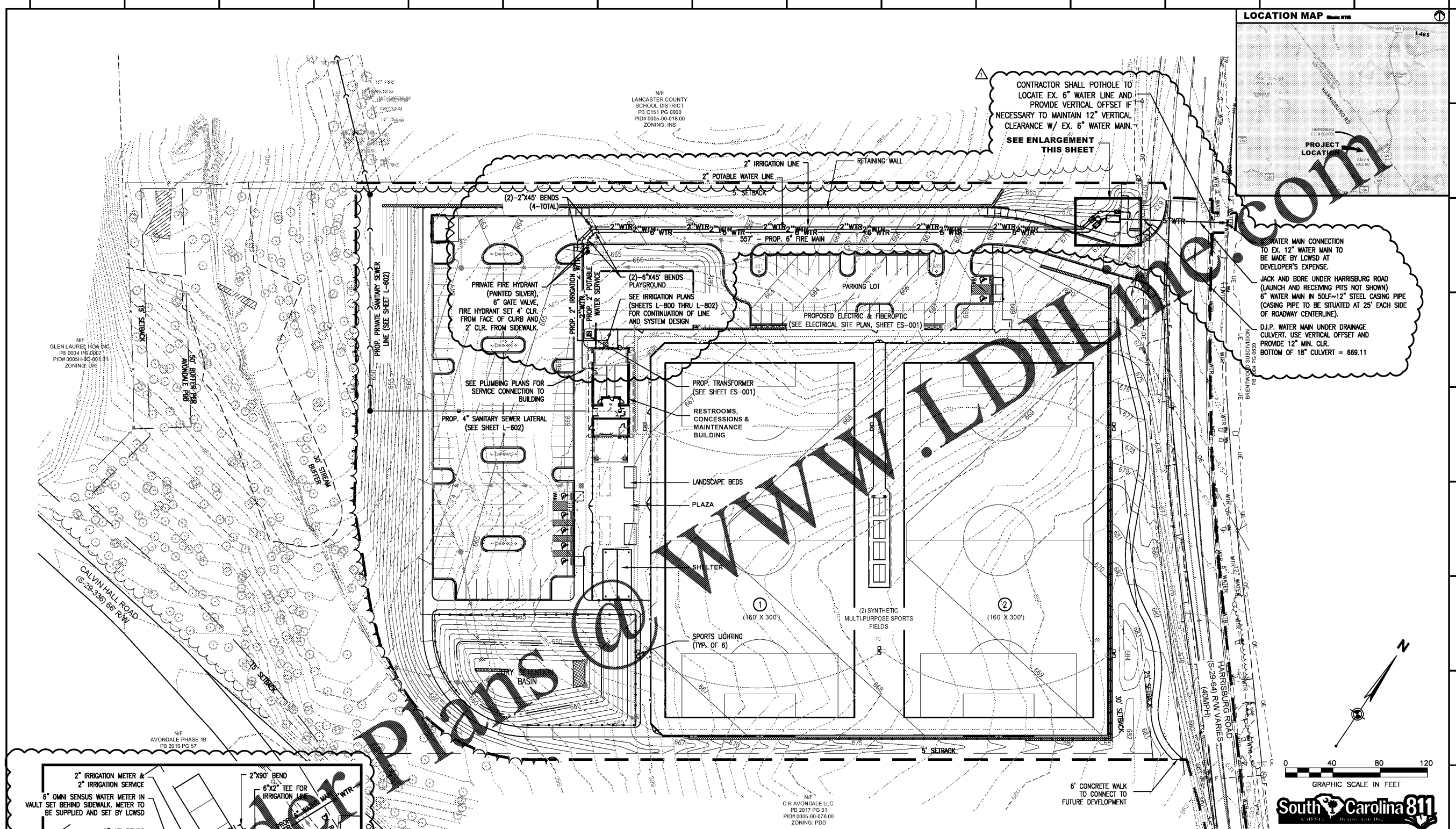


WATER MAIN CONNECTION TO EX. 12" WATER MAIN TO BE MADE BY LCWSD AT DEVELOPER'S EXPENSE.

JACK AND BORE UNDER HARRISBURG ROAD (LAUNCH AND RECEIVING PITS NOT SHOWN) 6" WATER MAIN IN 50LF-12" STEEL CASING PIPE (CASING PIPE TO BE SITUATED AT 25' EACH SIDE OF ROADWAY CENTERLINE).

D.I.P. WATER MAIN UNDER DRAINAGE CULVERT. USE VERTICAL OFFSET AND PROVIDE 12" MIN. CLR. BOTTOM OF 18" CULVERT = 669.11



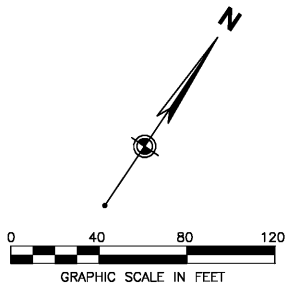
**GENERAL NOTES:**

1. SEE SHEET C-003.

**LCWSD Taps On Existing System General Notes:**

- AFTER INSTALLATION OF LCWSD APPROVED BACKFLOW DEVICE, THE DEVICE MUST BE TESTED BY A SOUTH CAROLINA CERTIFIED BACKFLOW DEVICE TESTER. ALL RESULTS MUST BE SUBMITTED TO LCWSD QUALITY CONTROL DEPARTMENT (PO BOX 1009, LANCASTER, SC 29731).
- THE CONTRACTOR IS RESPONSIBLE FOR REPAIR AND/OR REPLACEMENT OF ANY UTILITY DAMAGED DURING CONSTRUCTION.
- THERE SHALL BE NO TAPS, PIPE BRANCHES, UNAPPROVED BYPASS PIPING, HYDRANTS, FIRE DEPARTMENT CONNECTION POINTS, OR OTHER WATER USING APPURTENANCES CONNECTED TO THE SUPPLY LINE BETWEEN ANY WATER METER AND THE LCWSD REQUIRED BACKFLOW DEVICE.
- SEWER CLEANOUTS LOCATED IN PAVED AREAS MUST USE A TRAFFIC-RATED CAST IRON MINI-MANHOLE RING AND COVER.
- ALL 4" AND 6" GRAVITY SEWER SERVICE CONNECTIONS SHALL BE SCHEDULE 40 PVC, UNLESS OTHERWISE APPROVED BY LCWSD.
- PROPOSED 4", OR LARGER OMNI SENSUS METERS TO BE INSTALLED BY LCWSD AND/OR ITS CONTRACTORS, AT THE DEVELOPER'S EXPENSE.
- ALL PRIVATE FIRE HYDRANTS (LOCATED BEHIND METERS) MUST BE PAINTED SILVER.

LEGEND	
	TREE (6" OR LARGER)
	SIGN
	FIBER OPTICS MANHOLE
	FIBER OPTICS BOX
	UTILITY POLE
	FIRE HYDRANT
	WATER METER
	UNDERGROUND ELECTRIC
	OVERHEAD ELECTRIC
	UNDERGROUND FIBER OPTICS
	GAS LINE
	TREE LINE
	VEGETATION
	PROJECT LIMIT LINE
	DRY DETENTION BASIN
	WATER LINE
	SANITARY SEWER LINE (TO CONNECT TO AN EXISTING MAIN OFF SITE)
	SANITARY SEWER MANHOLE
	SANITARY SEWER CLEANOUT
	FIRE HYDRANT
	WATER/GATE VALVE
	WATER METER
	WATER TEE AND BEND
	DRAINAGE PIPE
	DRAINAGE INLETS
	FLARED END SECTION
	LIGHTPOLE (SEE ELECTRICAL PLANS)
	TRANSFORMER (SEE ELECTRICAL PLANS)



Lancaster County, South Carolina  
**Indian Land Soccer Complex**

10167 Harrisburg Road  
Indian Land, SC 29707

Revisions:  
PER REVIEW COMMENTS-1 01/22/21

Proj. No.: 80702  
Date: 10/13/2020

Sheet Name:  
Utility Plan - Water

**L-601**