

Lancaster County, South Carolina
Indian Land Soccer Complex

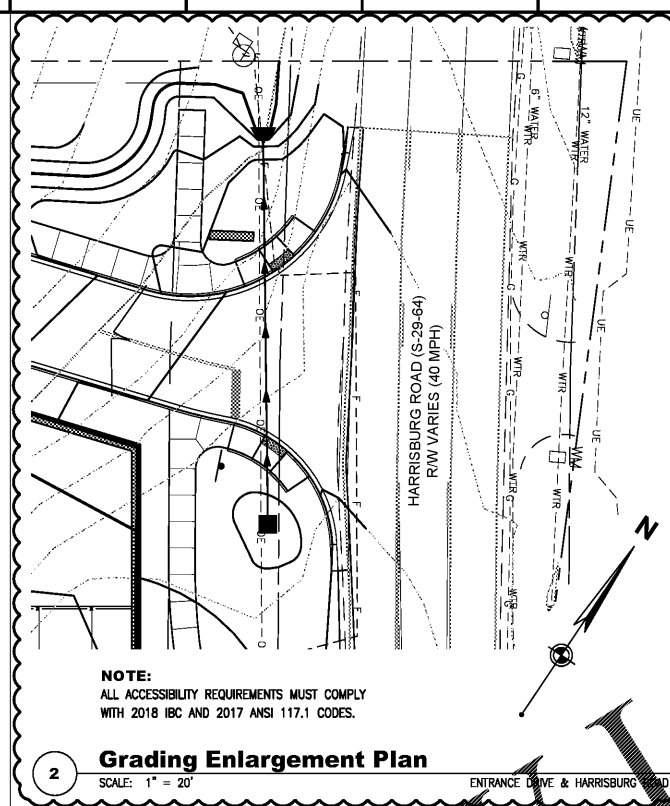
10167 Harrisburg Road
Indian Land, SC 29707

Revisions:
PER REVIEW COMMENTS-1 01/15/21

Proj. No.: 80702
Date: 10/13/2020

Sheet Name:
Grading
Enlargement
& Drainage Details

L-508

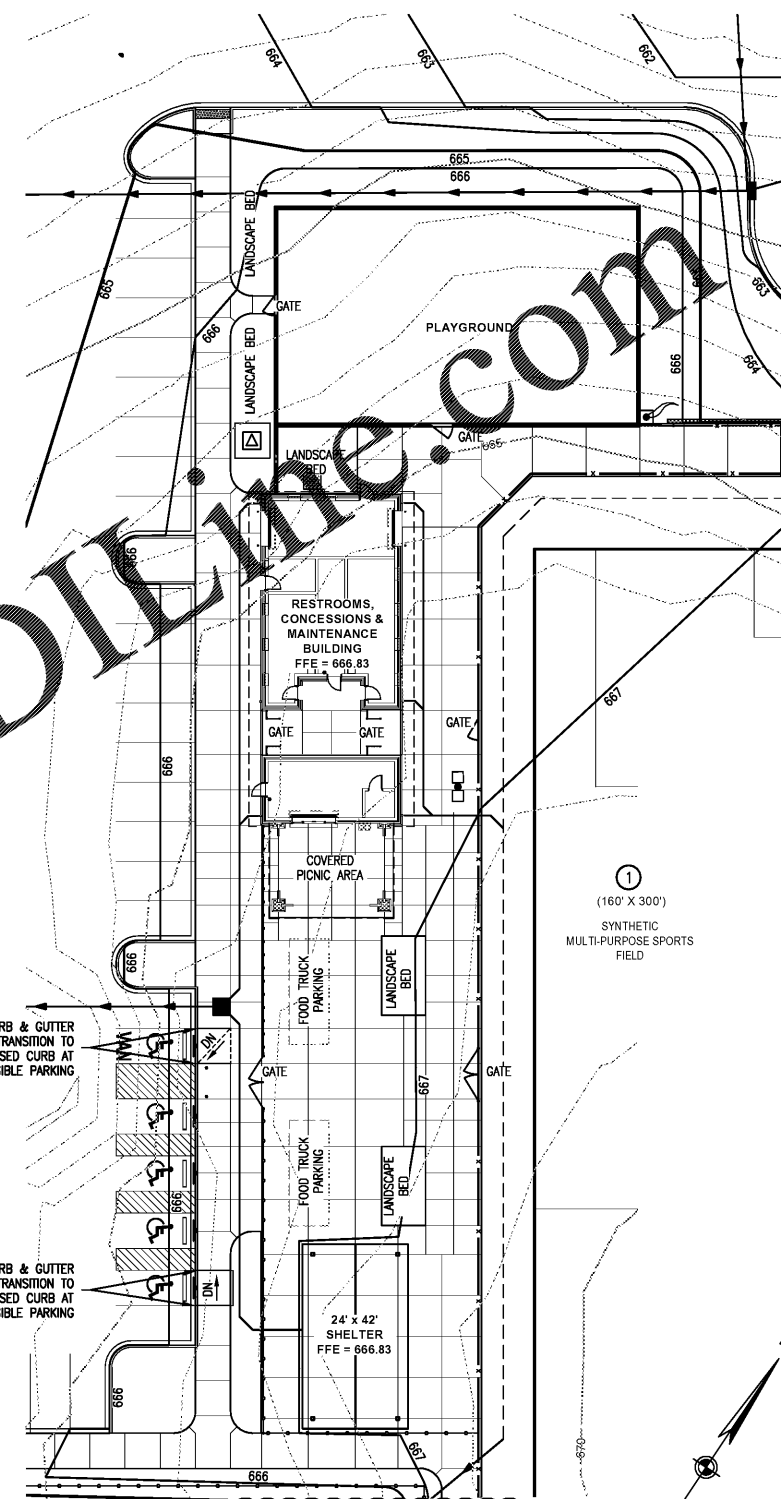


NOTE:
ALL ACCESSIBILITY REQUIREMENTS MUST COMPLY WITH 2018 IBC AND 2017 ANSI 117.1 CODES.

2 Grading Enlargement Plan

SCALE: 1" = 20'

ENTRANCE DRIVE & HARRISBURG ROAD



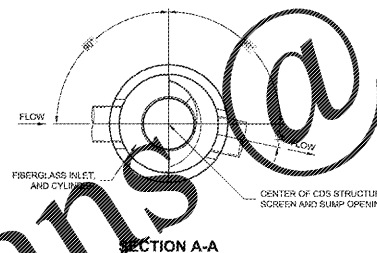
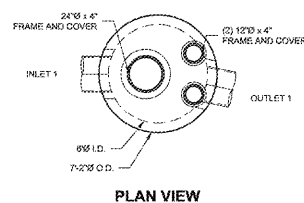
NOTE:
ALL ACCESSIBILITY REQUIREMENTS MUST COMPLY WITH 2018 IBC AND 2017 ANSI 117.1 CODES.

EXISTING		NEW	
	TREE (6" OR LARGER)		PLAYGROUND SURFACE
	SIGN		CONCRETE PAVEMENT
	TREE LINE		LIGHT DUTY ASPHALT PAVEMENT
	VEGETATION		HEAVY DUTY ASPHALT PAVEMENT
	CONTOUR LINE		CURB INLET
			CATCH BASIN
			STORM PIPE
			COLLECTOR DRAIN
			TREE LINE
			CONTOUR LINE
			SPOT ELEVATION-
			• HIGH PT (HP)
			• TOP/BOTTOM OF CURB (TC/BC)

1 Grading Enlargement Plan

SCALE: 1" = 20'

PLAZA & PLAYGROUND



QUANTITY	DESCRIPTION	UNIT	INSTALLER
1	FIBERGLASS INLET AND CYLINDER		CONTECH
1	2400 HERRICK 3\"/>		

SITE DESIGN DATA	
WATER QUALITY FLOW RATE	3.58 CFS
PEAK FLOW RATE	10.91 CFS
RETURN PERIOD OF PEAK FLOW	10 YRS

GENERAL NOTES:
1. CONTRACTOR TO PROVIDE ALL MATERIALS UNLESS NOTED OTHERWISE.
2. FOR FABRICATION DRAWINGS WITH DETAILED STRUCTURE DIMENSIONS AND WEIGHT, PLEASE CONTACT YOUR CONTECH ENGINEERED SOLUTIONS LLC REPRESENTATIVE. www.conteches.com
3. CDS WATER QUALITY STRUCTURE SHALL BE IN ACCORDANCE WITH ALL DESIGN DATA AND INFORMATION CONTAINED IN THIS DRAWING. CONTRACTOR TO CONFIRM STRUCTURE MEETS REQUIREMENTS OF PROJECT.
4. STRUCTURE SHALL MEET AASHTO HS-20 LOAD RATING, ASSUMING EARTH COVER OF 1'-2\"/>

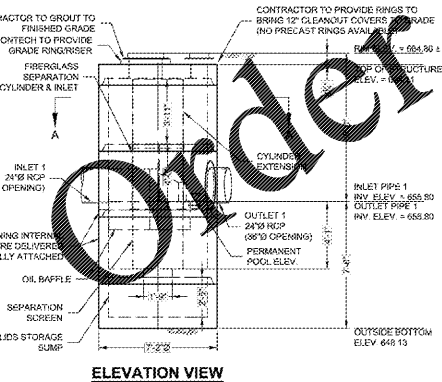
INSTALLATION NOTES:
A. ANY SURFACE BACKFILL DEPTH AND/OR WITH FLOTATION PROVISIONS ARE SITE SPECIFIC DESIGN CONSIDERATIONS AND SHALL BE SPECIFIED BY ENGINEER OF RECORD.
B. CONTRACTOR TO PROVIDE EQUIPMENT WITH SUFFICIENT LIFTING AND REACH CAPACITY TO LIFT AND SET THE CDS MARKOLE STRUCTURE.
C. CONTRACTOR TO INSTALL JOINT SEALANT BETWEEN ALL STRUCTURE SECTIONS AND ASSEMBLE STRUCTURE.
D. CONTRACTOR TO PROVIDE, INSTALL, AND GROUT INLET AND OUTLET PIPES. MATCH PIPE INVERTS WITH ELEVATIONS SHOWN. ALL PIPE CENTERLINES TO MATCH PIPE OPENING CENTERLINES.
E. CONTRACTOR TO TAKE APPROPRIATE MEASURES TO ASSURE UNIT IS WATER TIGHT, HOLDING WATER TO FLOWLINE INVERT MINIMUM. IT IS SUGGESTED THAT ALL JOINTS BELOW PIPE INVERTS ARE GROUTED.

STRUCTURE WEIGHT:
APPROXIMATE WEIGHT PER PIECE = 16500 LBS.
STRUCTURE IS DELIVERED IN 4 PIECES.

MAX FOOTPRINT = 37'-2"

CONTECH
PROPOSAL
DRAWING

NO.	DATE	DESCRIPTION
1	10/14/20	ISSUED FOR BIDDING
2	10/14/20	ISSUED FOR BIDDING
3	10/14/20	ISSUED FOR BIDDING
4	10/14/20	ISSUED FOR BIDDING
5	10/14/20	ISSUED FOR BIDDING
6	10/14/20	ISSUED FOR BIDDING
7	10/14/20	ISSUED FOR BIDDING
8	10/14/20	ISSUED FOR BIDDING
9	10/14/20	ISSUED FOR BIDDING
10	10/14/20	ISSUED FOR BIDDING
11	10/14/20	ISSUED FOR BIDDING
12	10/14/20	ISSUED FOR BIDDING
13	10/14/20	ISSUED FOR BIDDING
14	10/14/20	ISSUED FOR BIDDING
15	10/14/20	ISSUED FOR BIDDING
16	10/14/20	ISSUED FOR BIDDING
17	10/14/20	ISSUED FOR BIDDING
18	10/14/20	ISSUED FOR BIDDING
19	10/14/20	ISSUED FOR BIDDING
20	10/14/20	ISSUED FOR BIDDING
21	10/14/20	ISSUED FOR BIDDING
22	10/14/20	ISSUED FOR BIDDING
23	10/14/20	ISSUED FOR BIDDING
24	10/14/20	ISSUED FOR BIDDING
25	10/14/20	ISSUED FOR BIDDING
26	10/14/20	ISSUED FOR BIDDING
27	10/14/20	ISSUED FOR BIDDING
28	10/14/20	ISSUED FOR BIDDING
29	10/14/20	ISSUED FOR BIDDING
30	10/14/20	ISSUED FOR BIDDING
31	10/14/20	ISSUED FOR BIDDING
32	10/14/20	ISSUED FOR BIDDING
33	10/14/20	ISSUED FOR BIDDING
34	10/14/20	ISSUED FOR BIDDING
35	10/14/20	ISSUED FOR BIDDING
36	10/14/20	ISSUED FOR BIDDING
37	10/14/20	ISSUED FOR BIDDING
38	10/14/20	ISSUED FOR BIDDING
39	10/14/20	ISSUED FOR BIDDING
40	10/14/20	ISSUED FOR BIDDING
41	10/14/20	ISSUED FOR BIDDING
42	10/14/20	ISSUED FOR BIDDING
43	10/14/20	ISSUED FOR BIDDING
44	10/14/20	ISSUED FOR BIDDING
45	10/14/20	ISSUED FOR BIDDING
46	10/14/20	ISSUED FOR BIDDING
47	10/14/20	ISSUED FOR BIDDING
48	10/14/20	ISSUED FOR BIDDING
49	10/14/20	ISSUED FOR BIDDING
50	10/14/20	ISSUED FOR BIDDING
51	10/14/20	ISSUED FOR BIDDING
52	10/14/20	ISSUED FOR BIDDING
53	10/14/20	ISSUED FOR BIDDING
54	10/14/20	ISSUED FOR BIDDING
55	10/14/20	ISSUED FOR BIDDING
56	10/14/20	ISSUED FOR BIDDING
57	10/14/20	ISSUED FOR BIDDING
58	10/14/20	ISSUED FOR BIDDING
59	10/14/20	ISSUED FOR BIDDING
60	10/14/20	ISSUED FOR BIDDING
61	10/14/20	ISSUED FOR BIDDING
62	10/14/20	ISSUED FOR BIDDING
63	10/14/20	ISSUED FOR BIDDING
64	10/14/20	ISSUED FOR BIDDING
65	10/14/20	ISSUED FOR BIDDING
66	10/14/20	ISSUED FOR BIDDING
67	10/14/20	ISSUED FOR BIDDING
68	10/14/20	ISSUED FOR BIDDING
69	10/14/20	ISSUED FOR BIDDING
70	10/14/20	ISSUED FOR BIDDING
71	10/14/20	ISSUED FOR BIDDING
72	10/14/20	ISSUED FOR BIDDING
73	10/14/20	ISSUED FOR BIDDING
74	10/14/20	ISSUED FOR BIDDING
75	10/14/20	ISSUED FOR BIDDING
76	10/14/20	ISSUED FOR BIDDING
77	10/14/20	ISSUED FOR BIDDING
78	10/14/20	ISSUED FOR BIDDING
79	10/14/20	ISSUED FOR BIDDING
80	10/14/20	ISSUED FOR BIDDING
81	10/14/20	ISSUED FOR BIDDING
82	10/14/20	ISSUED FOR BIDDING
83	10/14/20	ISSUED FOR BIDDING
84	10/14/20	ISSUED FOR BIDDING
85	10/14/20	ISSUED FOR BIDDING
86	10/14/20	ISSUED FOR BIDDING
87	10/14/20	ISSUED FOR BIDDING
88	10/14/20	ISSUED FOR BIDDING
89	10/14/20	ISSUED FOR BIDDING
90	10/14/20	ISSUED FOR BIDDING
91	10/14/20	ISSUED FOR BIDDING
92	10/14/20	ISSUED FOR BIDDING
93	10/14/20	ISSUED FOR BIDDING
94	10/14/20	ISSUED FOR BIDDING
95	10/14/20	ISSUED FOR BIDDING
96	10/14/20	ISSUED FOR BIDDING
97	10/14/20	ISSUED FOR BIDDING
98	10/14/20	ISSUED FOR BIDDING
99	10/14/20	ISSUED FOR BIDDING
100	10/14/20	ISSUED FOR BIDDING



ELEVATION VIEW