



Lancaster County, South Carolina
Indian Land Soccer Complex

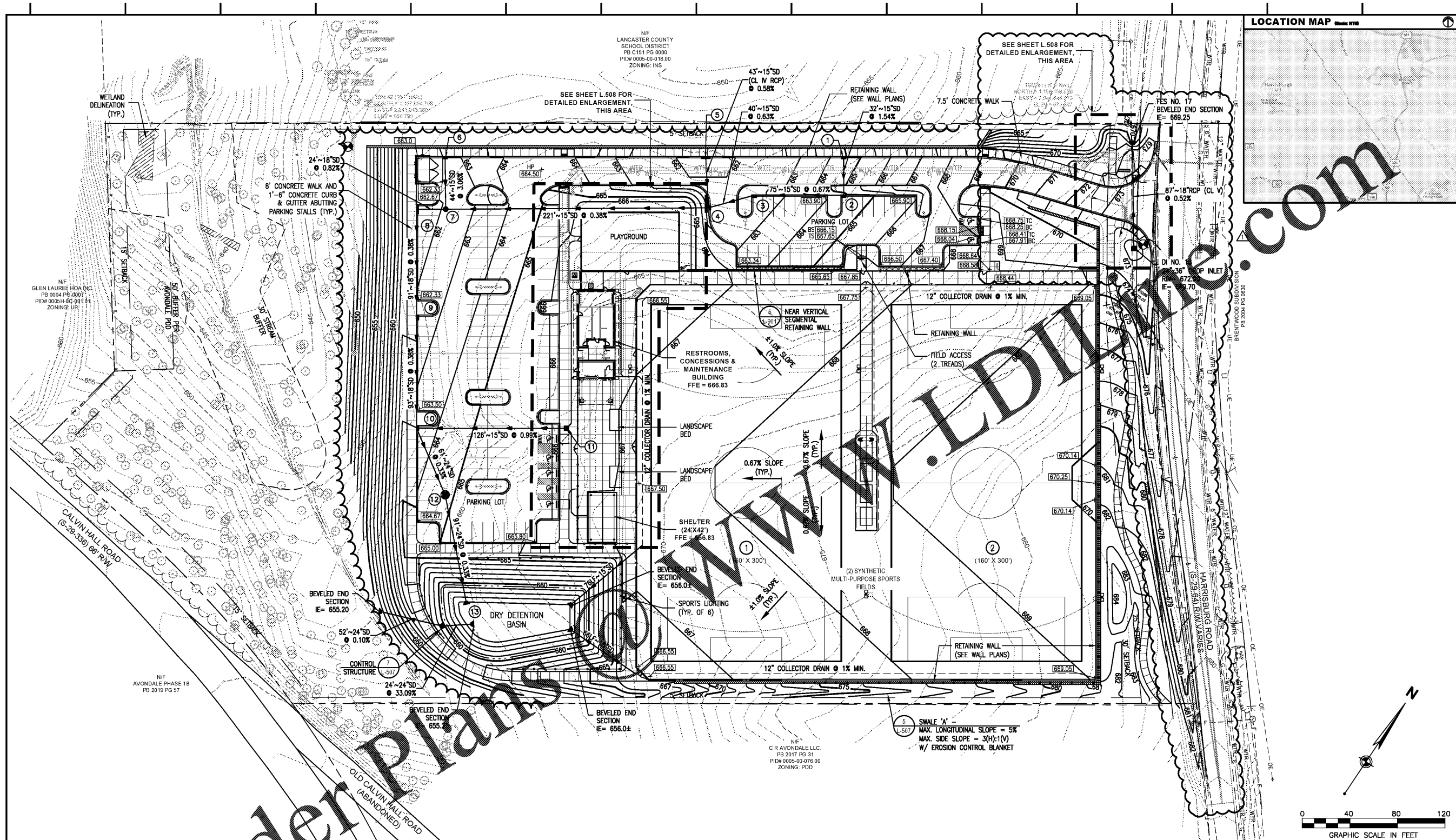
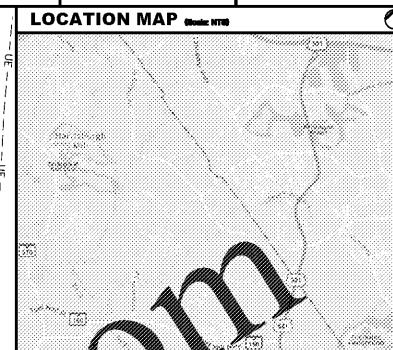
10167 Hamisburg Road
Indian Land, SC 29707

Revisions:
PER REVIEW COMMENTS-1 01/15/21

Proj. No.: 80702
Date: 10/13/2020

Sheet Name:
Grading &
Drainage Plan

L-500



Order Plans

STRUCTURE INFORMATION TABLE

① CATCH BASIN RIM= 664.80 IE= 659.25 SE	⑥ CATCH BASIN RIM= 662.87 IE= 658.00 SE	⑩ IE= 656.60 SE CATCH BASIN RIM= 663.87 IE= 656.25 NW IE= 656.00 SE IE= 656.75 NE
② CATCH BASIN RIM= 664.80 IE= 658.75 NW IE= 658.75 SW	⑦ MANHOLE RIM= 661.12 (MATCH PAVEMENT) IE= 657.15 NE IE= 657.15 SW IE= 657.15 SW	⑪ 18"x18" DRAIN INLET RIM= 666.67 (MATCH PAVEMENT) IE= 658.00 SW
③ CATCH BASIN RIM= 662.75 IE= 658.25 NE IE= 658.25 SW	⑧ CATCH BASIN RIM= 661.50 IE= 656.95 NE IE= 656.95 SE	⑫ HYDRODYNAMIC SEPARATOR RIM= 664.00 IE= 655.80 NW IE= 655.80 SE
④ CATCH BASIN RIM= 662.33 IE= 658.00 NE IE= 658.00 SW IE= 658.00 NW	⑨ CATCH BASIN RIM= 662.50 IE= 658.00 NW	⑬ FLARED END SECTION IE= 655.50 NW
⑤ CATCH BASIN RIM= 661.75 IE= 658.25 SE		

GENERAL NOTES

- SEE SHEET G-003 FOR ADDITIONAL GRADING AND EC NOTES.
- SEE SHEET L-503 FOR PLACEMENT OF EROSION CONTROL MATTING AND SLOPE STABILIZATION.
- UNLESS OTHERWISE NOTED, ALL CATCH BASINS SHALL BE PER SC DOT DRAWING NO. 719-001. CONTRACTOR MAY OPT TO UTILIZE NC DOT DRAWING NO. 840 WITH THE APPROVAL OF LANCASTER COUNTY.
- DROP INLETS SHALL BE 24"x24" OR 24"x36" IN ACCORDANCE WITH SC DOT DRAWING NO. 719-105 OR 719-110 RESPECTIVELY.
- STORM MANHOLES SHALL BE IN ACCORDANCE WITH SC DOT DRAWING NO. 719-505.
- ALL BEVELED END SECTIONS SHALL BE REINFORCED CONCRETE PIPE IN ACCORDANCE WITH SC DOT DRAWING NO. 719-810 UNLESS APPROVED OTHERWISE BY LANCASTER COUNTY.
- ALL YARD INLETS SHALL BE NYOPLAST OR EQUIVALENT.

LEGEND

EXISTING	NEW	NEW

