

Branch Panel: L
 Location: MAINTENANCE STORAGE 108
 Supply From: MDP
 Mounting: Surface
 Enclosure: Type 1

Volts: 480Y/277
 Phases: 3
 Wires: 4
 # of Circuits: 18

A.I.C. Rating: 14,000
 Mains Type: MCB
 Mains Rating: 250.0
 MCB Rating: 125.0

CKT	Circuit Description	Trip	Poles	A	B	C	Poles	Trip	Circuit Description	CKT
1				11267	11267					2
3	SPORTS LIGHTING - CIRCUIT A	60.0	3			11267	11267		SPORTS LIGHTING - CIRCUIT B	4
5						11267	11267			6
7				0	0					8
9	SPARE	20.0	3			0	0		SPARE	10
11						0	0			12
13	SPACE	--	--	0	0			--	SPACE	14
15	SPACE	--	--			0	0	--	SPACE	16
17	SPACE	--	--			0	0	--	SPACE	18
Total Load:				22.5 kVA	22.5 kVA	22.5 kVA				
Total Amps:				81 A	81 A	81 A				

Load Classification	Connected Load	Demand Factor	Estimated Demand	Panel Totals
LIGHTING	67600 VA	100.00%	67600 VA	
				Total Conn. Load: 67.6 kVA
				Total Est. Demand: 67.6 kVA
				Total Conn.: 81 A
				Total Est. Demand: 81 A

Notes:

Distribution Panel: MDP
 Location: MAINTENANCE STORAGE 108
 Supply From:
 Mounting: Surface
 Enclosure: Type 1

Volts: 480Y/277
 Phases: 3
 Wires: 4

A.I.C. Rating: 14,000
 Mains Type: MCB
 Mains Rating: 400.0
 MCB Rating: 250.0

Notes:

CKT	Circuit Description	# of Poles	Trip Rating	Load	Remarks
1	TRANSFORMER T-1	3		110.0	48655 VA
2	HP-1	3	15.0	15.0	5318 VA
3	EH-1	1	20.0	20.0	3462 VA
4	PANEL L - SPORTS LIGHTING	3	125.0	125.0	67600 VA
5					
6					
7					
8					
9					
10					
11					
12					
13					
14					
15					
16					
17					
18					
19					
20					

Load Classification	Connected Load	Demand Factor	Estimated Demand	Panel Totals
LIGHTING	67600 VA	100.00%	67600 VA	
				Total Conn. Load: 67.6 kVA
				Total Est. Demand: 67.6 kVA
				Total Conn.: 81 A
				Total Est. Demand: 81 A

Notes:



11301 Carmel Commons Blvd
 Suite 300
 Charlotte, NC 28226
 704.525.6284
 FAX: 704.525.0115



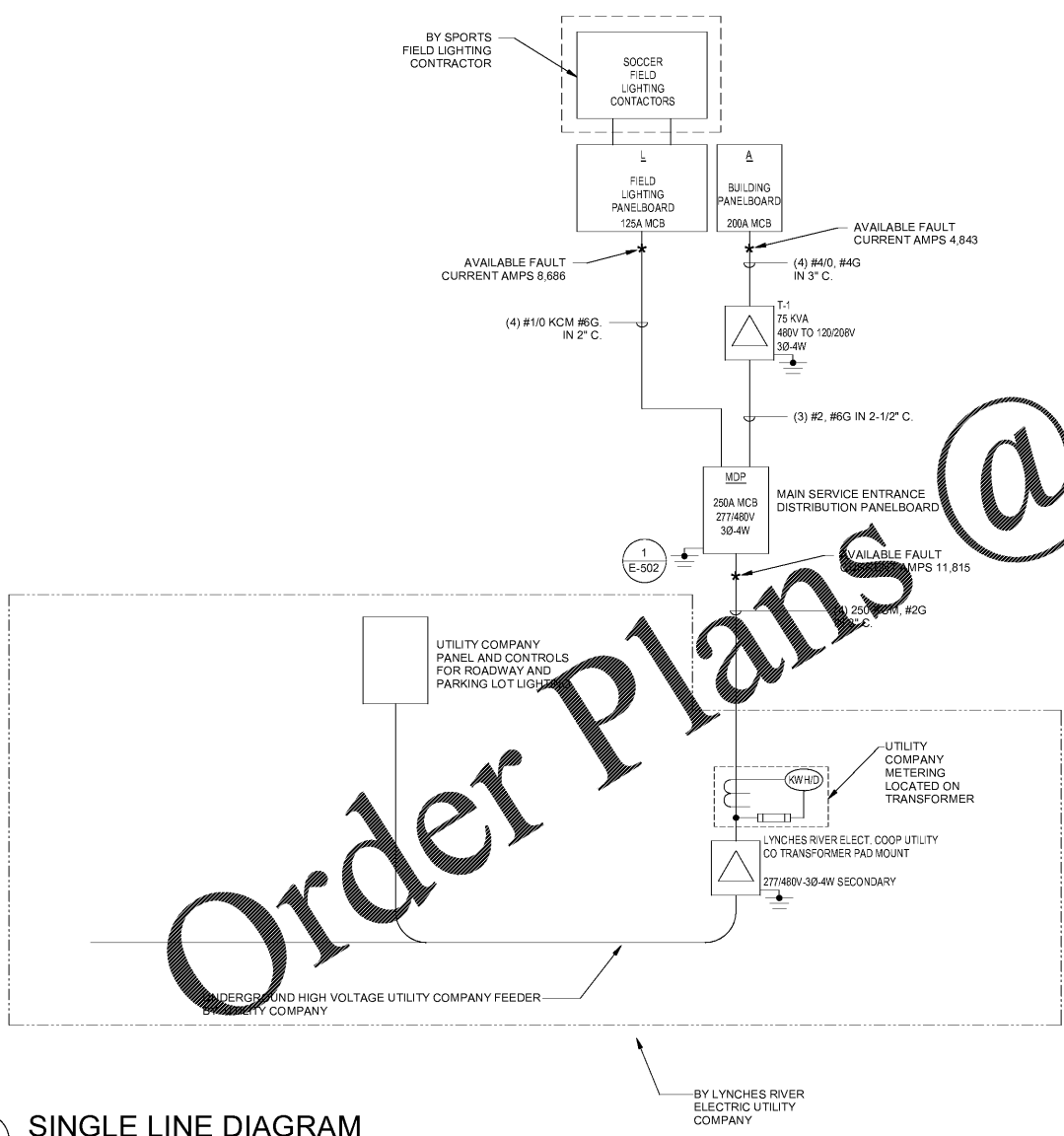
Lancaster County, South Carolina
Heath Springs Soccer Complex
 200 Boyd Falle Road
 Heath Springs, SC 29058

Revisions:

Proj. No.: 80703
 Date: 10/09/2020

Sheet Name:
 ELECTRICAL
 PANEL
 SCHEDULES &
 SINGLE-LINE
 DIGRAM

E-601



1 SINGLE LINE DIAGRAM
 SCALE: NTS

Branch Panel: A
 Location: MAINTENANCE STORAGE 108
 Supply From: T-1
 Mounting: Surface
 Enclosure: Type 1

Volts: 208Y/120
 Phases: 3
 Wires: 4
 # of Circuits: 54

A.I.C. Rating: 14,000
 Mains Type: MCB
 Mains Rating: 225.0
 MCB Rating: 200.0

CKT	Circuit Description	Trip	Poles	A	B	C	Poles	Trip	Circuit Description	CKT
1	LIGHTING - MENS/FAMILY	20.0	1	532	6240			2	AHU-1	2
3	LIGHTING - WOMENS	20.0	1		576	6240				4
5	LIGHTING - CONCESSIONS/STORAGE	20.0	1			648	3333			6
7	EXTERIOR LIGHTING	20.0	1	444	3333			3	20.0	8
9	LIGHTING - MAINT. STORAGE/JANITOR	20.0	1		492	3333				10
11	SPARE	20.0	1			0	975	2	20.0	12
13	CONCESSIONS AIR CIRCULATOR	20.0	1	1176	975					14
15	RCPT - MAINTENANCE STORAGE 108	20.0	1		720	1500		1	20.0	16
17	RCPT - EXTERIOR - EAST	20.0	1			540	1500	1	20.0	18
19	RCPT - EXTERIOR - WEST	20.0	1	720	1500			1	20.0	20
21	RCPT - RM 106, MEN'S 105	20.0	1		540	1500		1	20.0	22
23	RCPT - RM 107 WOMEN'S	20.0	1			540	1500	1	20.0	24
25	RECEPT CONCESSIONS - POPCORN MKR	20.0	1	360	600			1	20.0	26
27	RECEPT CONCESSIONS 124	20.0	1		720	1200		1	20.0	28
29	RECEPT CONCESSIONS - ICE MACHINE	20.0	1			696	550	2	20.0	30
31	RECEPT CONCESSIONS 124	20.0	1	360	550					32
33	RECEPT CONCESSIONS - BEVERAGE	20.0	1		1200	600				34
35	RECEPT CONCESSIONS - REFRIGERATOR	20.0	1			331	600	3	20.0	36
37	RECEPT CONCESSIONS - FREEZER	20.0	1	994	600					38
39	RECEPT CHASE/JANITOR 116	20.0	1		360	0		1	20.0	40
41	SPORTS LIGHTING CONTROL CIRCUIT	20.0	1			284	72	1	20.0	42
43	RECEPT TELECOM 102	20.0	1	720	0			1	20.0	44
45	SPARE	20.0	1		0	0		1	20.0	46
47	SPARE	20.0	1			0	0	1	20.0	48
49	SPARE	20.0	1	0	0			1	20.0	50
51	SPARE	20.0	1		0	0		1	20.0	52
53	SPARE	20.0	1			0	0	1	20.0	54
Total Load:				19.1 kVA	19.0 kVA	11.6 kVA				
Total Amps:				169 A	168 A	96 A				

Load Classification	Connected Load	Demand Factor	Estimated Demand	Panel Totals
HVAC	12480 VA	65.00%	8112 VA	
Other	23430 VA	70.00%	16401 VA	Total Conn. Load: 49.7 kVA
RECEPT	10601 VA	97.17%	10301 VA	Total Est. Demand: 38.0 kVA
LIGHTING	3144 VA	100.00%	3144 VA	Total Conn.: 138 A
EQUIPMENT	0 VA	0.00%	0 VA	Total Est. Demand: 105 A

Notes: