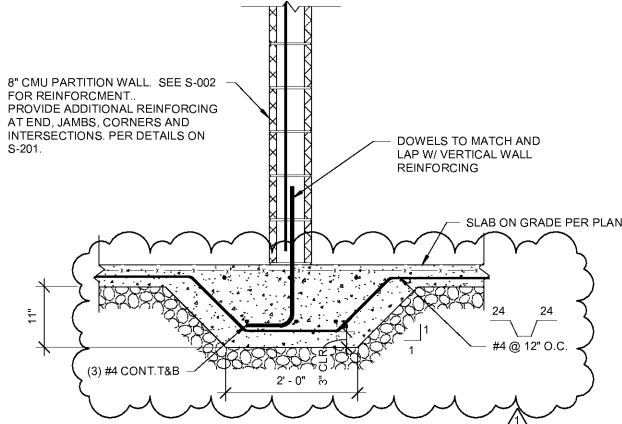
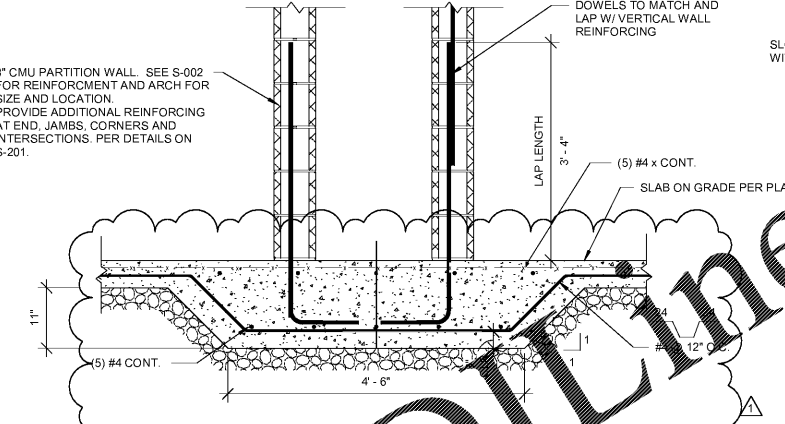


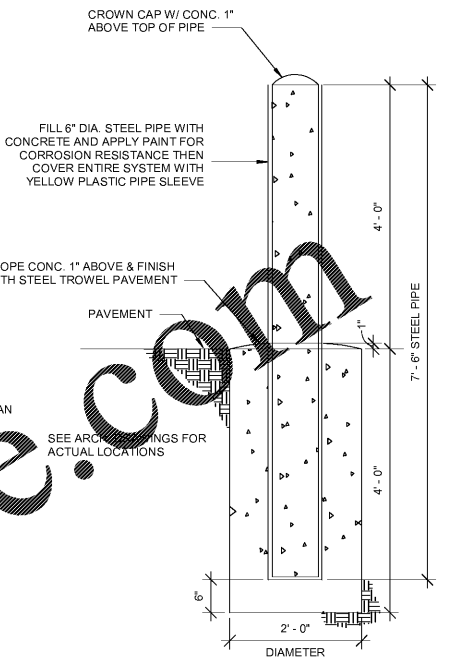
**1 SECTION**  
SCALE: 1" = 1'-0"



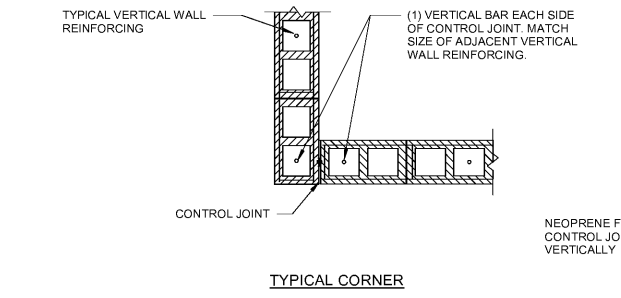
**2 SECTION**  
SCALE: 3/4" = 1'-0"



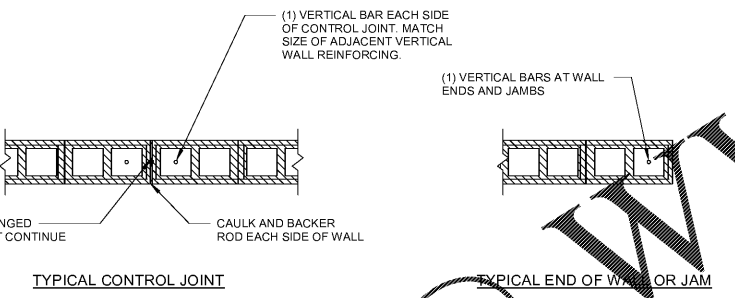
**3 SECTION**  
SCALE: 3/4" = 1'-0"



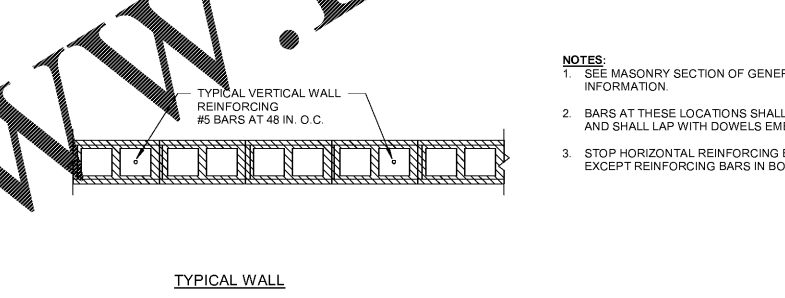
**4 SECTION**  
SCALE: 3/4" = 1'-0"



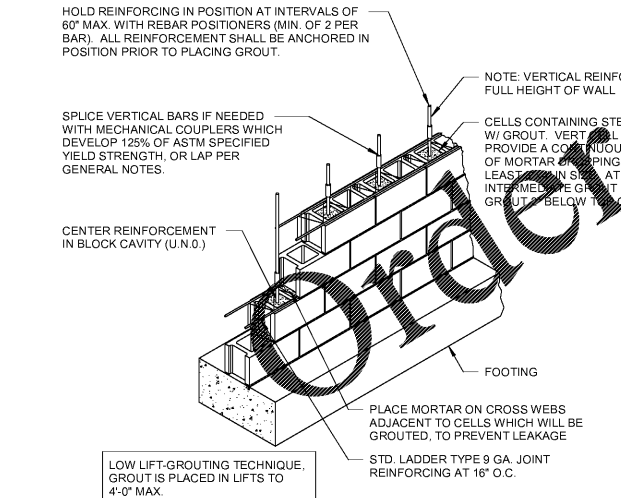
**5 SECTION**  
SCALE: 3/4" = 1'-0"



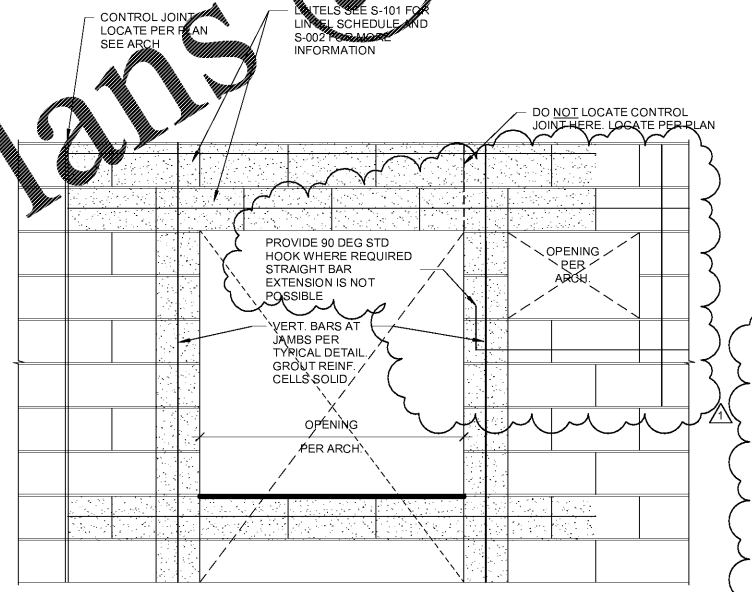
**7 TYP. MASONRY WALL OPENING, UNO**  
SCALE: 3/4" = 1'-0"



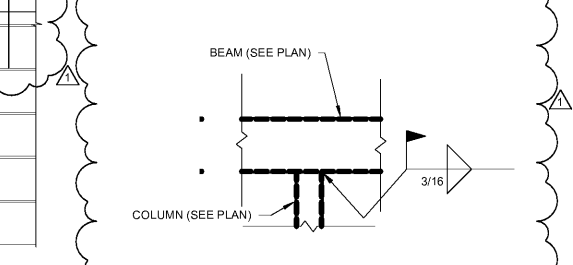
**8 SLAB CONTROL JOINT**  
SCALE: 3" = 1'-0"



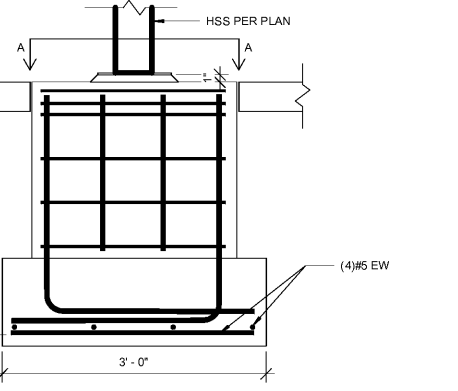
**6 TYPICAL CMU REINFORCING LAYOUT**  
SCALE: 1/2" = 1'-0"



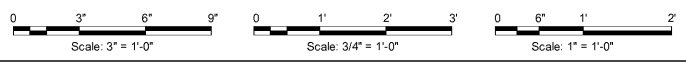
**7 TYP. MASONRY WALL OPENING, UNO**  
SCALE: 3/4" = 1'-0"



**10 Section 2**  
SCALE: 3/4" = 1'-0"



**9 SPREAD FOOTING**  
SCALE: 1" = 1'-0"



- NOTES:**
- SEE MASONRY SECTION OF GENERAL NOTES ON SHEETS S-001 FOR ADDITIONAL INFORMATION.
  - BARS AT THESE LOCATIONS SHALL MATCH SIZE OF TYPICAL VERTICAL REINFORCING, AND SHALL LAP WITH DOWELS EMBEDDED INTO FOOTING.
  - STOP HORIZONTAL REINFORCING EACH SIDE OF CONTROL JOINT AS INDICATED, EXCEPT REINFORCING BARS IN BOND BEAMS.