



Lancaster County, South Carolina  
**Heath Springs Soccer Complex**  
Lancaster County Parks & Recreation Soccer Complexes  
200 Boyd Falls Road  
Heath Springs, SC 29068

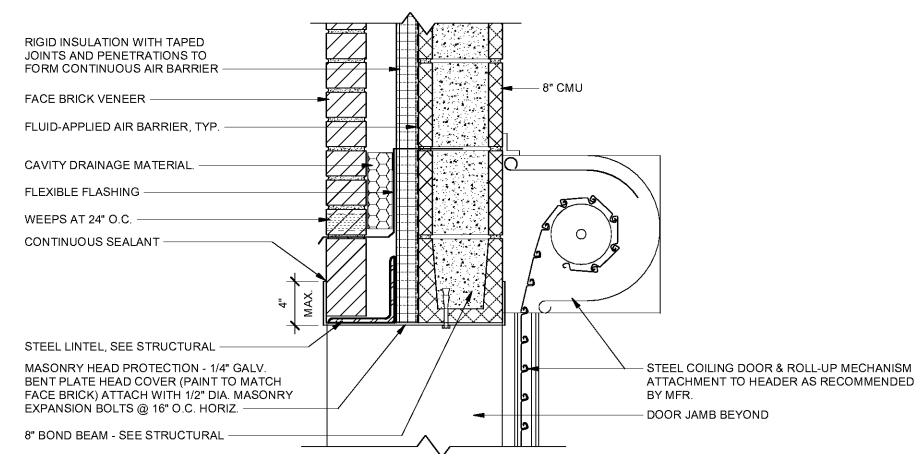
Revisions:

Proj. No.: 080703  
Date: 10/09/2020

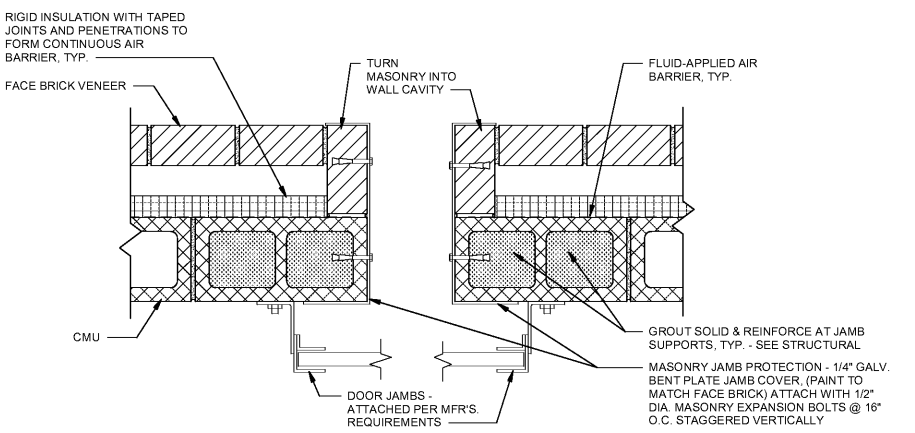
Sheet Name:  
DOOR SCHEDULE & DETAILS

**A-602**

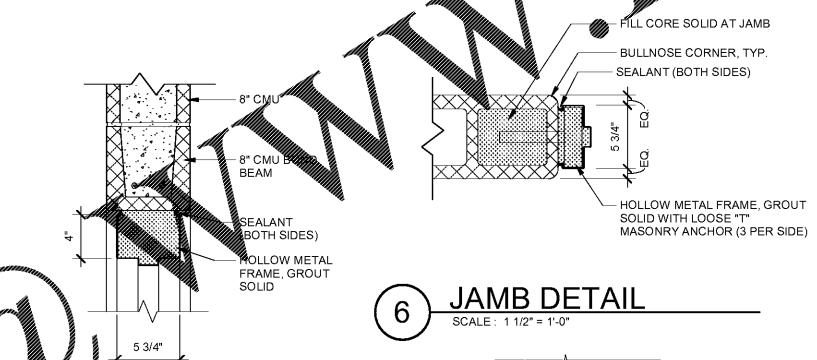
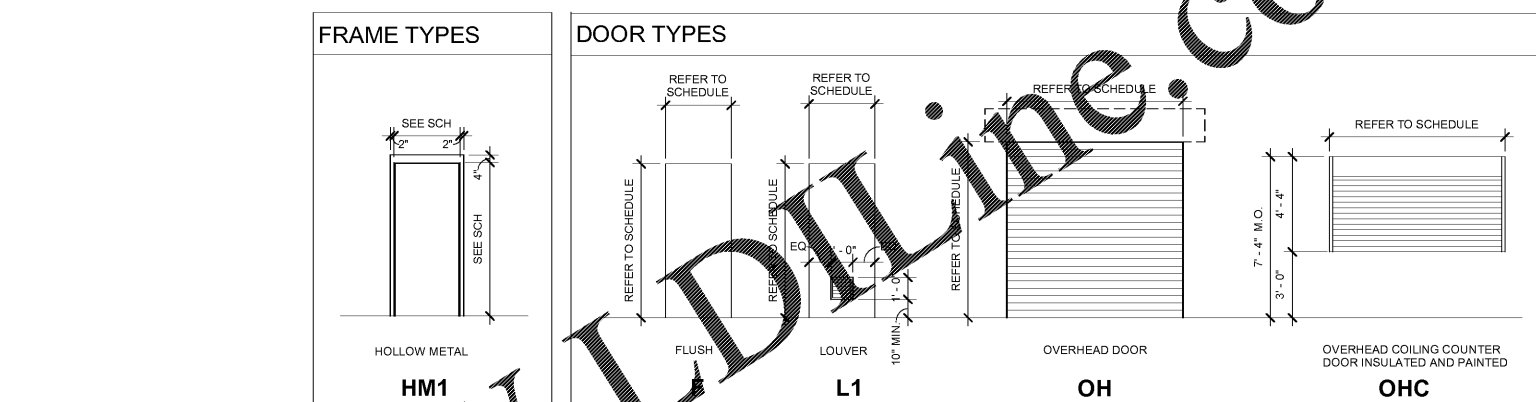
DOOR NO.	ROOM	DOOR TYPE	DOOR					FRAME					HARDWARE SET	SIGNAGE TYPE	NOTES		
			WIDTH	HEIGHT	THICKNESS	MATERIAL	FINISH	UNDER CUT	TYPE	MATERIAL	FINISH	HEAD				JAMB	SILL
101A	CONCESSIONS	F	3' - 0"	7' - 0"	1 3/4"	INSUL MTL	PT-2		HM1	HM	PT-2	3/A-602	4/A-602	7/A-602	HDW 3	C	
101B	CONCESSIONS	OHC	10' - 0"	4' - 4 3/8"							PT-2	3/A-311					FACTORY FINISH TO MATCH PT-2
102	TELECOM	F	3' - 0"	7' - 0"	1 3/4"	HM	PT-2	3/4"	HM1	HM	PT-2	5/A-602	6/A-602		HDW 4	C	
103A	MAINTENANCE STORAGE	F	3' - 0"	7' - 0"	1 3/4"	INSUL MTL	PT-2		HM1	HM	PT-2	3/A-602	4/A-602	7/A-602	HDW 3	C	
103B	MAINTENANCE STORAGE	OH	8' - 0"	7' - 4"							PT-2	1/A-602	2/A-602				FACTORY FINISH TO MATCH PT-2
104	FAMILY TOILET	F	3' - 0"	7' - 0"	1 3/4"	INSUL MTL	PT-2		HM1	HM	PT-2	3/A-602	4/A-602	7/A-602	HDW 2	B	
105	MEN	F	3' - 0"	7' - 0"	1 3/4"	INSUL MTL	PT-2		HM1	HM	PT-2	3/A-602	4/A-602	7/A-602	HDW 1	A	
106	CHASE/JANITOR	L1	3' - 0"	7' - 0"	1 3/4"	INSUL MTL	PT-2		HM1	HM	PT-2	3/A-602	4/A-602	7/A-602	HDW 3	A	
107	WOMEN	F	3' - 0"	7' - 0"	1 3/4"	INSUL MTL	PT-2		HM1	HM	PT-2	3/A-602	4/A-602	7/A-602	HDW 3	A	



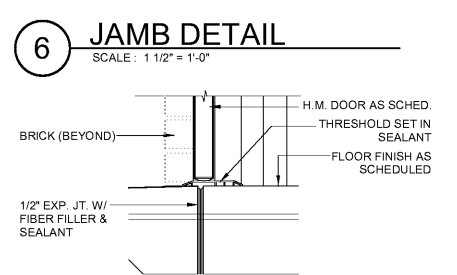
**1 EXTERIOR COILING DOOR - HEAD DETAIL**  
SCALE: 1 1/2" = 1'-0"



**2 EXTERIOR COILING DOOR - JAMB DETAIL**  
SCALE: 1 1/2" = 1'-0"

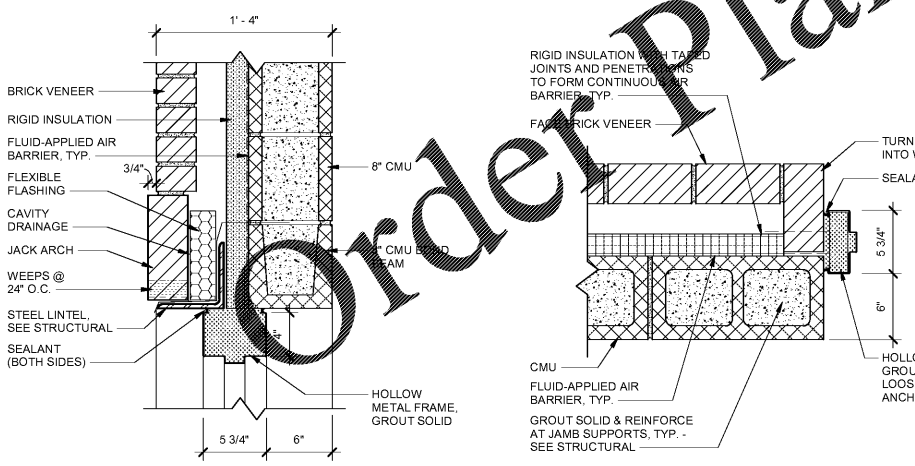


**5 HEAD DETAIL**  
SCALE: 1 1/2" = 1'-0"

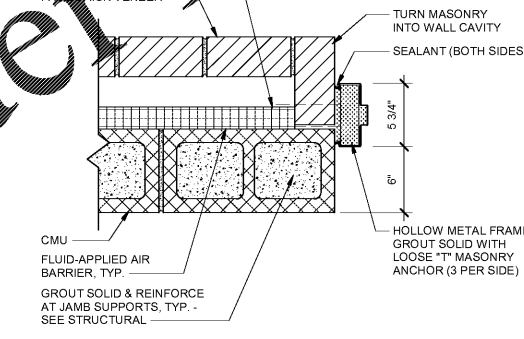


**7 SILL DETAIL**  
SCALE: 1 1/2" = 1'-0"

HARDWARE SCHEDULE	
<b>HDW 1 - EACH TO HAVE:</b>	<b>HDW 4 - EACH TO HAVE:</b>
3 Heavy Duty Hinges, Stanley CB199 (32D) 4.5x4.5 1 Push/Pull Plate, Rockwood 110x73C/73CL (32D) 1 Toe Pull, Rockwood FP1230 (32D) 1 Deadlock, Corbin Russwin DL3017 w/ ANSI Strike (26D) 1 Heavy Duty Closer, Corbin Russwin DC8200-A10 (26D) 1 Kick Plate, Rockwood K1050-4 (32D) 1 SET Silencers, Ives SR64 1 Threshold, Zero 65-A-EV3-222-36 1 SET Weatherstripping, Zero 8144S-BK-17	3 EA Heavy Duty Hinges, Stanley CB199 (32D) 4.5x4.5 1 Cylindrical Lever Lockset, Corbin Russwin CL3357 1 HES 8000 Electric Strike by Security Contractor 1 SET Silencers, Ives SR64
<b>HDW 2 - EACH TO HAVE:</b>	<b>DOOR GENERAL NOTES</b>
3 Heavy Duty Hinges, Stanley CB199 (32D) 4.5x4.5 1 Cylindrical Lever Lockset, Corbin Russwin CL3391 w/ ANSI Strike (26D) 1 Heavy Duty Closer, Corbin Russwin DC8200-A10 (26D) 1 Push Plate, Rockwood 70C-RKW (32D) 1 Kick Plate, Rockwood K1050 (Interior) (32D) 1 SET Silencers, Ives SR64 1 Threshold, Zero 65-A-EV3-222-36 1 SET Weatherstripping, Zero 8144S-BK-17	1. HOLLOW METAL FRAMES SHALL BE SOLID GROUDED AT MASONRY CONDITIONS, TROWLED NOT PUMPED. 2. DOORS AND FRAMES SHALL BE FACTORY PRIMED, FIELD PAINTED. 3. SEE MECHANICAL DRAWINGS FOR LOUVER NET FREE AREA REQUIREMENTS. 4. HARDWARE SHALL BE US32D SATIN STAINLESS STEEL OR US26D SATIN CHROMIUM PLATED FINISH UNLESS OTHERWISE NOTED. 5. SPECIFIC REFERENCES TO MANUFACTURER PRODUCTS ARE FOR BASIS-OF-DESIGN. SEE SPECIFICATIONS FOR ALLOWABLE MANUFACTURERS. 6. PROVIDE 7-PIN INTERCHANGABLE CORES (IC) FOR ALL CYLINDERS AND KEYING.
<b>HDW 3 - EACH TO HAVE:</b>	
3 Heavy Duty Hinges, Stanley CB199 (32D) 4.5x4.5 1 Cylindrical Lever Lockset, Corbin Russwin CL3357 1 HES 8000 Electric Strike by Security Contractor 1 Heavy Duty Closer, Corbin Russwin DC8210-A14 (26D) 1 SET Silencers, Ives SR64 1 Threshold, Zero 65-A-EV3-222-36 1 SET Weatherstripping, Zero 8144S-BK-17 1 Protection Plate, Ives 8402-630, 34x36 (Interior)	



**3 HEAD DETAIL**  
SCALE: 1 1/2" = 1'-0"



**4 JAMB DETAIL**  
SCALE: 1 1/2" = 1'-0"

**SIGN LEGEND NOTES**

- SIGNAGE REPRESENTED IN THESE DOCUMENTS ARE TO BE USED FOR DIAGRAMMATIC AND INFORMATIONAL PURPOSES ONLY.
- SIGNAGE MANUFACTURER SHALL PREPARE SHOP DRAWINGS AND SUBMIT TO ARCHITECT WITH SAMPLES FOR APPROVAL BEFORE COMMENCING WITH MANUFACTURING AND INSTALLATION.
- ALL SIGNS SHALL COMPLY WITH AMERICANS WITH DISABILITIES ACCESSIBILITY ACT GUIDELINES (ADAAG).
- SIGNAGE SHALL BE ON A DARK BROWN BACKGROUND. COLOR SAMPLES SHALL BE SUBMITTED TO THE ARCHITECT FOR THE OWNER'S APPROVAL.
- WALL MOUNTING SYSTEM SHALL BE INSTALLED/ADHERED PER MANUFACTURERS REQUIREMENTS.
- THE SIGN MOUNTING LOCATION CRITERIA SHALL COMPLY WITH ADAAG REQUIREMENTS, CHAPTER 11 OF 2015 IBC, AND ANSI A117.1.1(2017)

**SIGN LEGEND**



SIGN TYPE 'A' = 6"x12"      SIGN TYPE 'B' = 10"x10"      SIGN TYPE 'C' = 6"x12"