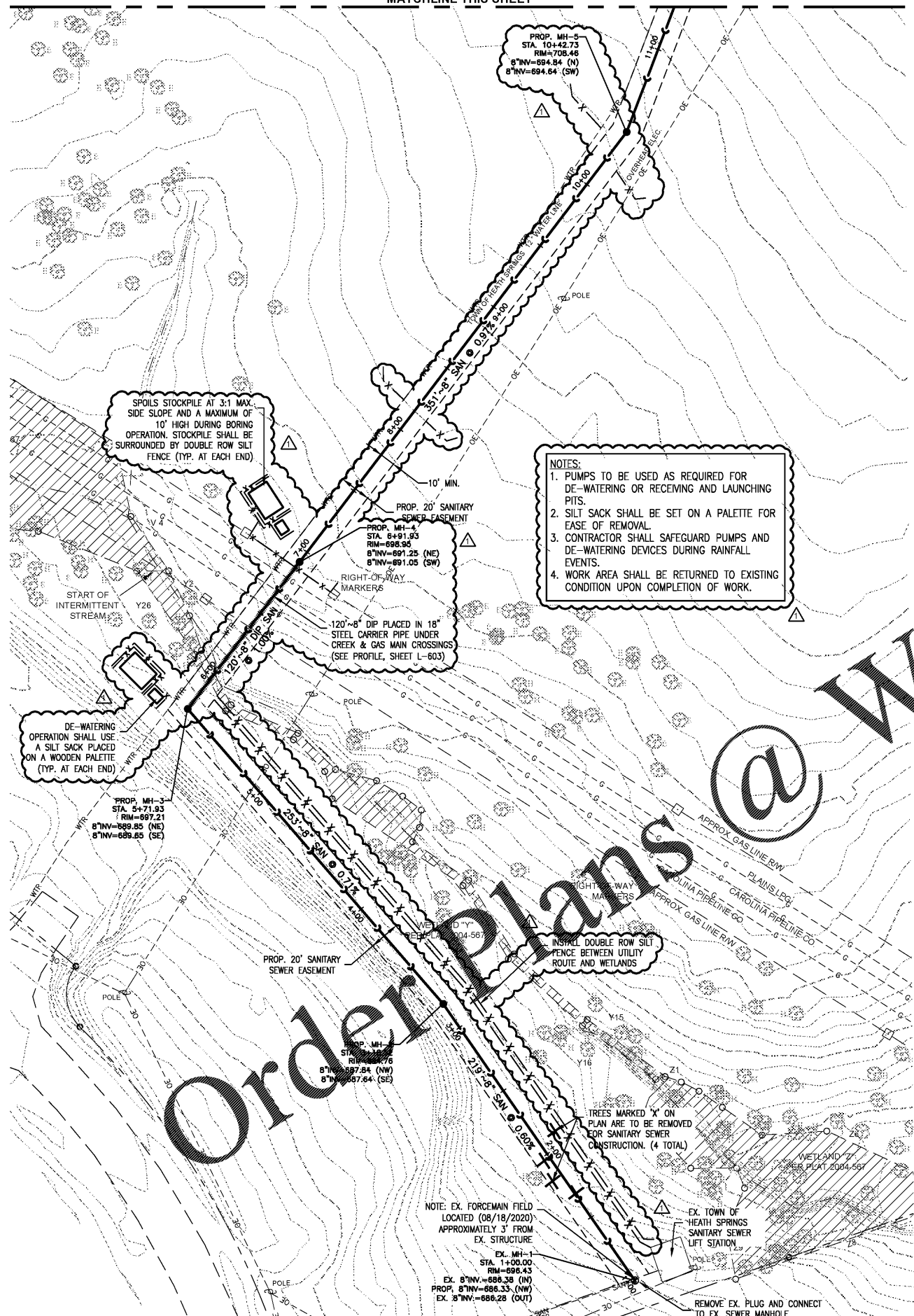


MATCHLINE THIS SHEET



NOTES:

1. PUMPS TO BE USED AS REQUIRED FOR DE-WATERING OR RECEIVING AND LAUNCHING PITS.
2. SILT SACK SHALL BE SET ON A PALETTE FOR EASE OF REMOVAL.
3. CONTRACTOR SHALL SAFEGUARD PUMPS AND DE-WATERING DEVICES DURING RAINFALL EVENTS.
4. WORK AREA SHALL BE RETURNED TO EXISTING CONDITION UPON COMPLETION OF WORK.

SPOILS STOCKPILE AT 3:1 MAX. SIDE SLOPE AND A MAXIMUM OF 10' HIGH DURING BORING OPERATION. STOCKPILE SHALL BE SURROUNDED BY DOUBLE ROW SILT FENCE (TYP. AT EACH END)

DE-WATERING OPERATION SHALL USE A SILT SACK PLACED ON A WOODEN PALETTE (TYP. AT EACH END)

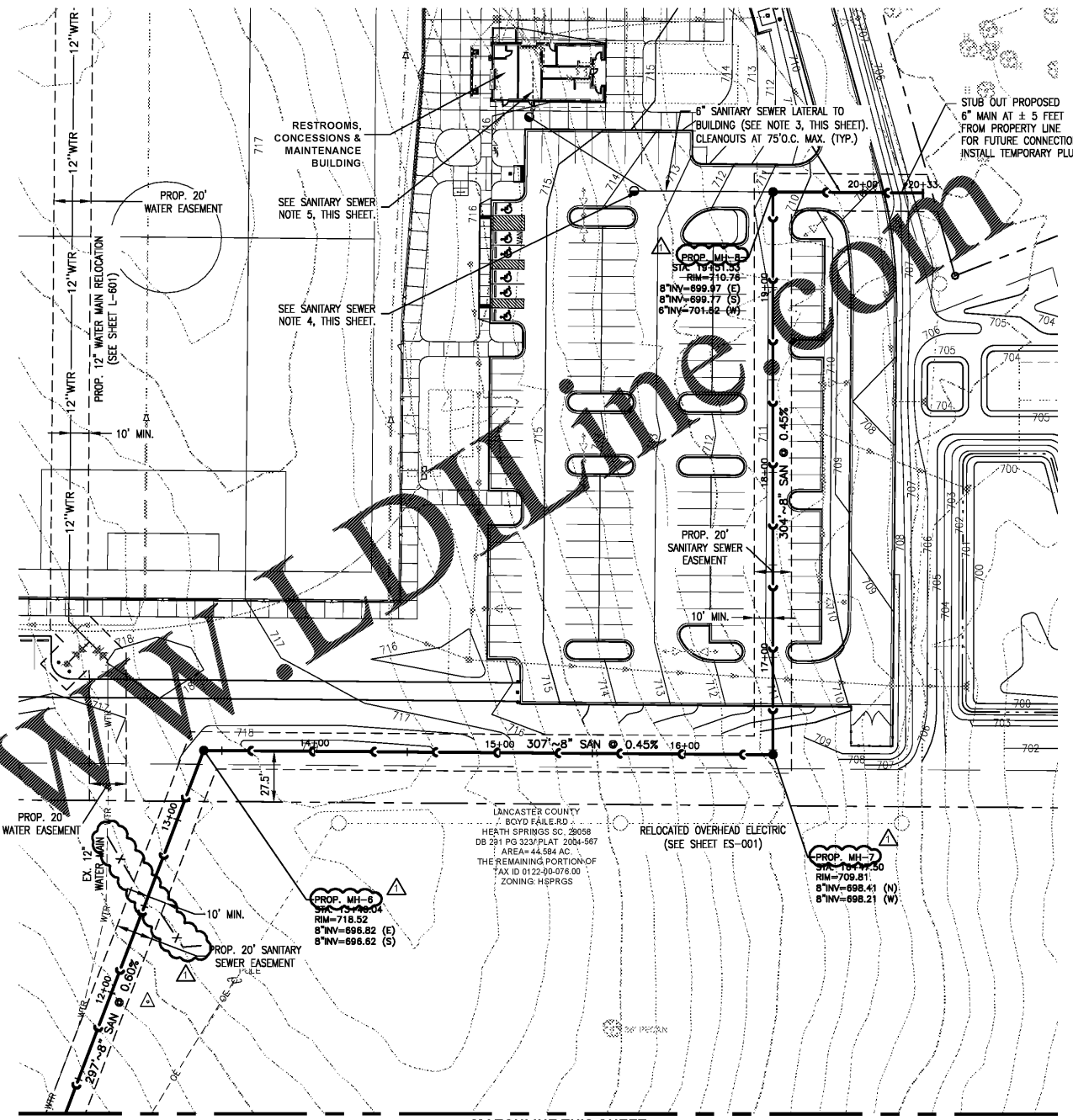
120"~8" DIP PLACED IN 18" STEEL CARRIER PIPE UNDER CREEK & GAS MAIN CROSSINGS (SEE PROFILE, SHEET L-603)

INSTALL DOUBLE ROW SILT FENCE BETWEEN UTILITY ROUTE AND WETLANDS

NOTE: EX. FORCEMAIN FIELD LOCATED (08/18/2020) APPROXIMATELY 3' FROM EX. STRUCTURE
 EX. MH-1
 STA. 1+00.00
 RIM=696.43
 PROP. 8" INV=696.33 (NW)
 EX. 8" INV=696.29 (OUT)

TREES MARKED 'X' ON PLAN ARE TO BE REMOVED FOR SANITARY SEWER CONSTRUCTION. (4 TOTAL)

REMOVE EX. PLUG AND CONNECT TO EX. SEWER MANHOLE



NOTES:

1. SEE SHEET G-003 FOR UTILITY NOTES.
2. SEE SHEET ES-001 FOR ELECTRICAL SITE PLAN.
3. SEE SHEETS L-800 THRU L-802 FOR IRRIGATION DESIGN.
4. SEWER LATERAL SHALL BE SLOPED AT 1/8" PER FT. MIN.
5. VERTICAL STACK MAY BE INSTALLED AT CLEANOUT ONLY.
6. COORDINATE POINT OF SERVICE WITH PLUMBING PLAN.
7. REFER TO SANITARY PROFILE (SHEET L-603) FOR ADDITIONAL INFORMATION.
8. CONTRACTOR SHALL ARRANGE A PRE-CONSTRUCTION MEETING WITH CAROLINA PIPELINE AND ENGINEER OF RECORD PRIOR TO COMMENCEMENT OF CONSTRUCTION.

RESTROOMS, CONCESSIONS & MAINTENANCE BUILDING:
 SEE SANITARY SEWER NOTE 5, THIS SHEET.

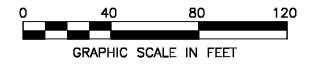
SEE SANITARY SEWER NOTE 4, THIS SHEET.

8" SANITARY SEWER LATERAL TO BUILDING (SEE NOTE 3, THIS SHEET). CLEANOUTS AT 750.C. MAX. (TYP.)

STUB OUT PROPOSED 6" MAIN AT ± 5 FEET FROM PROPERTY LINE FOR FUTURE CONNECTION. INSTALL TEMPORARY PLUG.

MATCHLINE THIS SHEET

NOTE:
 SEE SHEET(S) L-603 & L-604 FOR SANITARY SEWER MAIN PROFILES.



SANITARY SEWER NOTES		LEGEND	
1. SEE SHEET G-003 FOR UTILITY NOTES.	2. SEE SHEET ES-001 FOR ELECTRICAL SITE PLAN.	EXISTING	NEW
3. SEE SHEETS L-800 THRU L-802 FOR IRRIGATION DESIGN.	4. SEWER LATERAL SHALL BE SLOPED AT 1/8" PER FT. MIN.	TREE (6" OR LARGER)	WATER LINE
5. VERTICAL STACK MAY BE INSTALLED AT CLEANOUT ONLY.	6. COORDINATE POINT OF SERVICE WITH PLUMBING PLAN.	SIGN	SANITARY SEWER LINE (TO CONNECT TO AN EXISTING MAIN OFF SITE)
7. REFER TO SANITARY PROFILE (SHEET L-603) FOR ADDITIONAL INFORMATION.	8. CONTRACTOR SHALL ARRANGE A PRE-CONSTRUCTION MEETING WITH CAROLINA PIPELINE AND ENGINEER OF RECORD PRIOR TO COMMENCEMENT OF CONSTRUCTION.	TELEPHONE BOX	SANITARY SEWER MANHOLE
		UTILITY POLE	SANITARY SEWER CLEANOUT
		WATER VALVE	FIRE HYDRANT
		WATER LINE	WATER/GATE VALVE
		UNDERGROUND ELECTRIC	WATER METER
		OVERHEAD ELECTRIC	WATER TEE AND BEND
		UNDERGROUND TELEPHONE	DRAINAGE PIPE
		GAS LINE	DRAINAGE INLETS
		CONTOUR LINE	FLARED END SECTION
		WETLANDS	



11301 Camel Commons Blvd
 Suite 300
 Charlotte, NC 28226
 704.525.6284
 FAX: 704.525.0115



Lancaster County, South Carolina
Heath Springs Soccer Complex

200 Boyd Faile Road
 Heath Springs, SC 29058

Revisions:
 PER REVIEW COMMENTS-1 1/28/2021

Proj. No.: 80703
 Date: 10/09/2020

Sheet Name:
 Utility Plan -
 8" Sanitary Sewer
 Main & 6" Lateral

L-602