

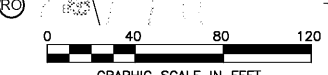
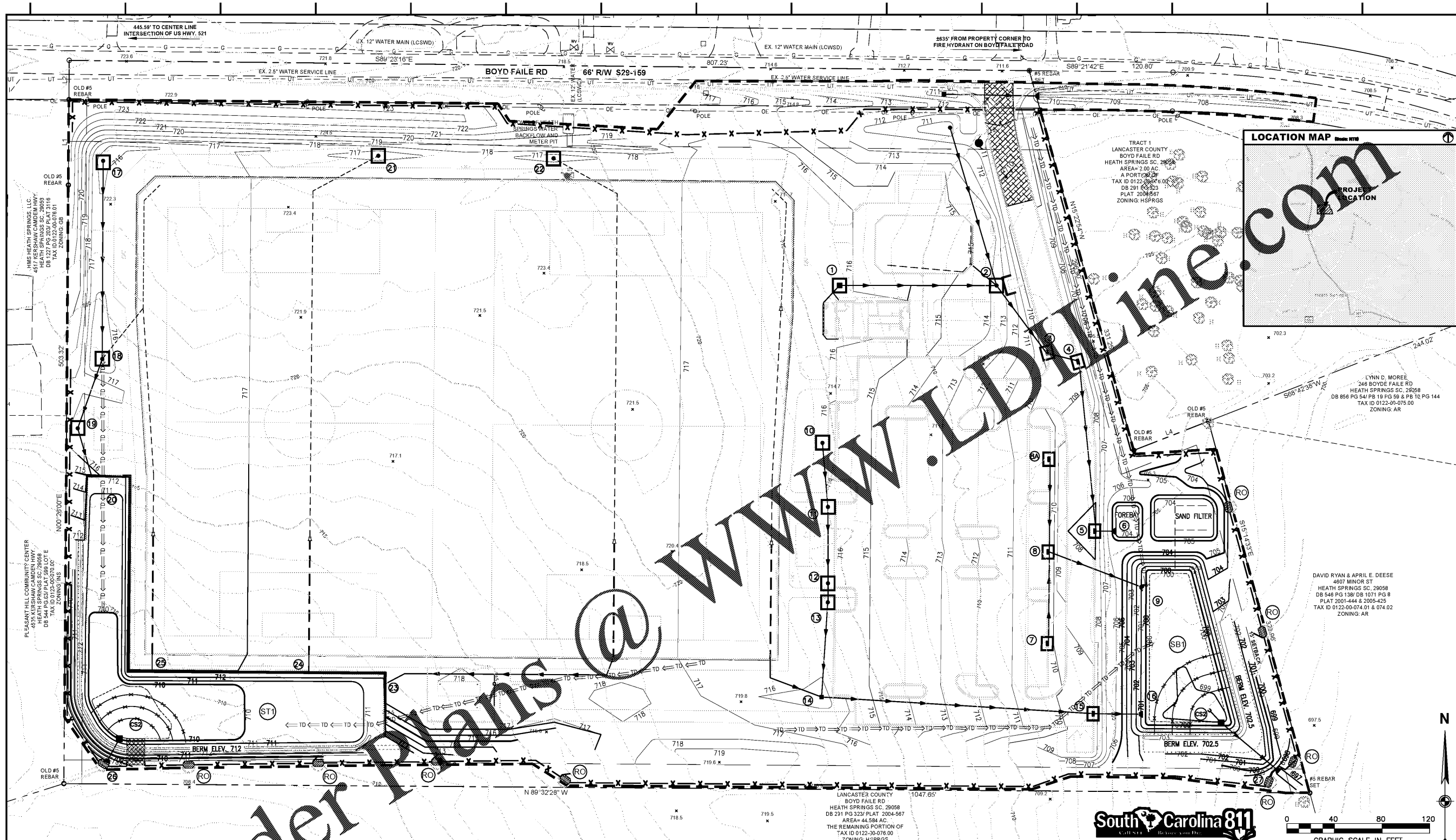


David E. Manning
1-15-21



Lancaster County, South Carolina
Heath Springs Soccer Complex

200 Boyd Faile Road
Heath Springs, SC 29058



- PHASE 2 SEQUENCING NOTES**
- UPON APPROVAL OF THE SITE FOLLOWING THE INITIAL PHASE, BEGIN CLEARING AND GRUBBING.
 - INSTALL OTHER EROSION CONTROL DEVICES AS INSTRUCTED DURING THE SITE INSPECTION PRIOR TO COMMENCEMENT OF THE INITIAL PHASE.
 - BEGIN EARTHWORK OPERATIONS FOR THE FIELD CONSTRUCTION, AMENITY AREA(S) AND PARKING LOT. THE CONTRACTOR SHALL DOCUMENT THE SOURCE OF ALL IMPORTED FILL USED AT THE PROJECT SITE.
 - INSTALL REMAINING STORM DRAINAGE PIPES, STRUCTURES, AND INLET PROTECTION AS SHOWN PER PLAN. DRAINAGE PIPE LEADING TO SEDIMENT TRAP/BASIN SHALL BE INSTALLED AND MAY BE USED FOR CONVEYANCE PURPOSES PROVIDED INLET PROTECTION IS PROVIDED DURING THE EARTHWORK OPERATION.
 - DIVERT RUNOFF TO DRAINAGE STRUCTURES.
 - CONTRACTOR SHALL COORDINATE AND HAVE TESTING PERFORMED IN ACCORDANCE WITH THE RECOMMENDATIONS PROVIDED IN THE GEOTECHNICAL REPORT FOR THE PROJECT.

- GENERAL NOTES**
- SEE SHEETS L-504 THRU L-508 FOR EROSION & SEDIMENT CONTROL DETAILS.
 - SEE SHEET L-505 FOR SCDHEC STANDARD EROSION & SEDIMENT CONTROL NOTES.
 - SEE SHEET G-003 FOR ADDITIONAL EC NOTES.
 - TEMPORARY DIVERSION DITCHES AND WATER BARS (IF USED) SHALL BE REPAIRED / RESHAPED AT THE END OF EACH WORK DAY TO MATCH THE STATUS OF CONSTRUCTION.
 - PROVIDE GROUND COVER ON ALL AREAS THAT WILL NOT BE DISTURBED BY CONSTRUCTION WITHIN FOURTEEN (14) CALENDAR DAYS IN ACCORDANCE WITH THE STATE'S GROUND STABILIZATION SCHEDULE.
 - CONTRACTOR SHALL DILIGENTLY AND CONTINUOUSLY MAINTAIN AND CORRECT ALL EROSION CONTROL DEVICES AND STRUCTURES TO INCLUDE NECESSARY REPAIRS TO EXISTING CONDITIONS OUTSIDE THE LIMITS OF CONSTRUCTION AS A RESULT OF SITE CONSTRUCTION UNTIL SUCH TIME THAT FINAL STABILIZATION IS DEEMED ACCEPTABLE.
 - SEDIMENT SHALL BE REMOVED / HAULED FROM THE SITE UNLESS AN APPROVED ON-SITE LOCATION IS IDENTIFIED BY THE OWNER. REMOVAL AND HAULING SHALL BE AT NO ADDITIONAL COST TO THE OWNER.
 - SKIMMER UNIT SHALL BE MAINTAINED IN OPERATING CONDITION.
 - EXCESS FILL MATERIAL AND TOPSOIL MAY BE STOCKPILED AND STORED AT A LOCATION APPROVED BY THE COUNTY EROSION CONTROL INSPECTOR.
 - STABILIZE SITE AS AREAS ARE BROUGHT TO FINISH GRADE. EROSION CONTROL MATTING AS INDICATED ON THE PLANS SHALL BE INSTALLED AS SOON AS POSSIBLE AFTER FINAL GRADE IS ESTABLISHED TO LIMIT POTENTIAL FOR RILL EROSION.
 - ALL EROSION CONTROL MEASURES SHALL BE HANDSIGNED IN ACCORDANCE WITH THE SC DHEC BMP HANDBOOK, US DEPARTMENT OF AGRICULTURE, AND LANCASTER COUNTY.

LEGEND

EXISTING	EROSION CONTROL	DRAINAGE STRUCTURES W/ INLET PROTECTION
(Symbol) TREE (6" OR LARGER)	(Symbol) LIMITS OF DISTURBANCE	(Symbol) DRAINAGE STRUCTURES W/ INLET PROTECTION
(Symbol) SIGN	(Symbol) SILT FENCE	(Symbol) BASIN OVERFLOW STRUCTURE
(Symbol) FIBER OPTICS MANHOLE	(Symbol) SILT FENCE ROCK OUTLET W/ SEDIMENT TUBE	(Symbol) HYDRODYNAMIC SEPARATOR (WATER QUALITY STRUCTURE)
(Symbol) FIBER OPTICS BOX	(Symbol) SEDIMENT BASIN	(Symbol) STORM MANHOLE
(Symbol) UTILITY POLE	(Symbol) BASIN WEIR ELEVATION	(Symbol) DRAINAGE PIPE
(Symbol) FIRE HYDRANT	(Symbol) BASIN BOTTOM ELEVATION	(Symbol) UNDERDRAIN
(Symbol) WATER METER	(Symbol) BAFFLE	(Symbol) CLASS B RIP RAP APRON AT OUTLET PIPE
(Symbol) WATER LINE	(Symbol) RISER PIPE (PRINCIPLE SPILLWAY)	(Symbol) TREE LINE
(Symbol) UNDERGROUND ELECTRIC	(Symbol) OUTLET PIPE	
(Symbol) OVERHEAD ELECTRIC	(Symbol) EROSION CONTROL BLANKET	
(Symbol) UNDERGROUND FIBER OPTICS	(Symbol) TEMP. DIVERSION DITCH	
(Symbol) GAS LINE		
(Symbol) TREE LINE		
(Symbol) VEGETATION		
(Symbol) TEMPORARY BENCHMARK		

Proj. No.: 80703
Date: 10/09/2020

Sheet Name:
Erosion & Sediment Control Plan - Phase 2

L-502