

Lancaster County, South Carolina
Heath Springs Soccer Complex

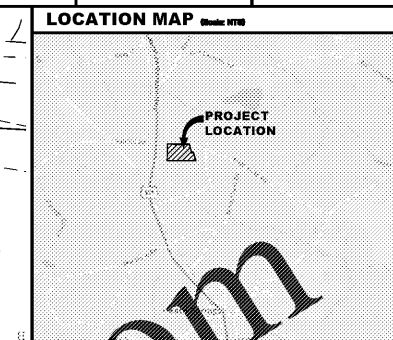
200 Boyd Faile Road
Heath Springs, SC 29058

Revisions:

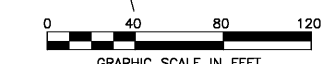
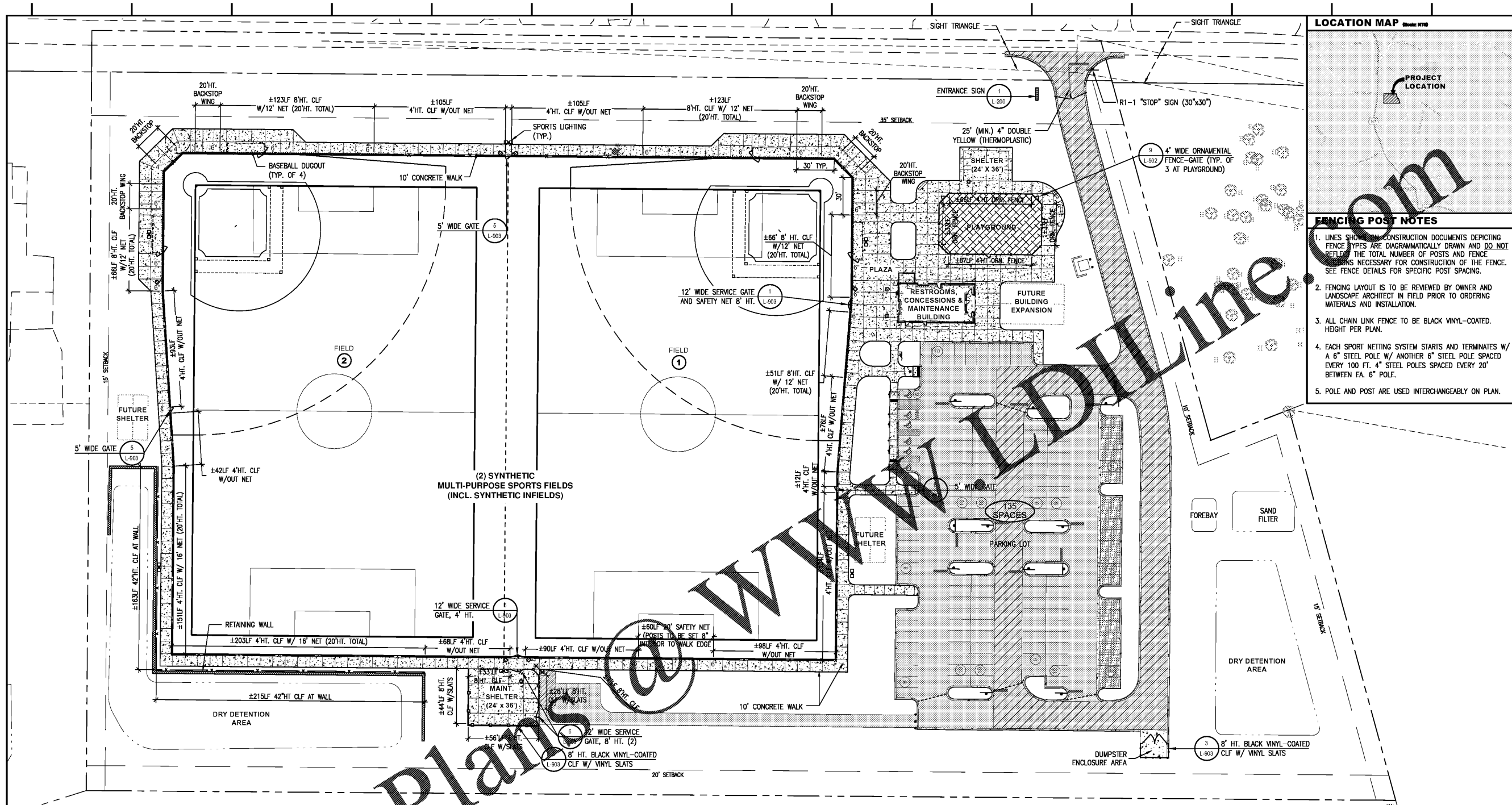
Proj. No.: 80703
Date: 10/13/2020

Sheet Name:
Site Signage
& Fencing Plan

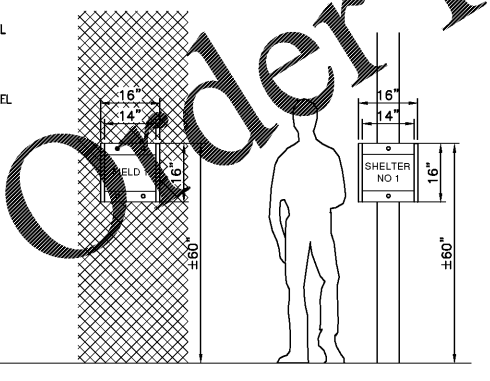
L-200



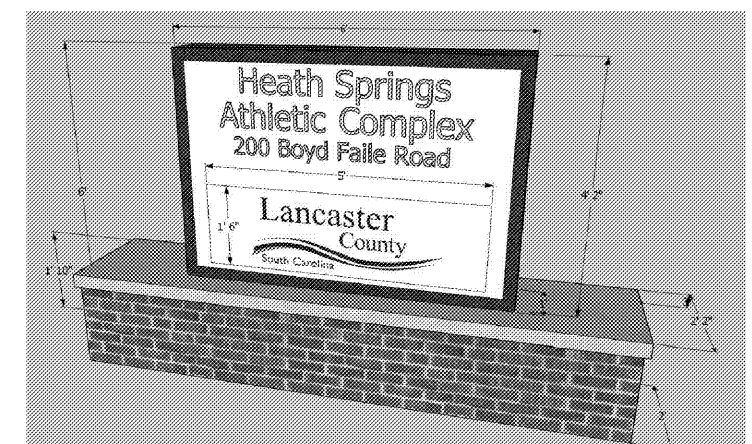
- FENCING POST NOTES**
1. LINES SHOWN ON CONSTRUCTION DOCUMENTS DEPICTING FENCE TYPES ARE DIAGRAMMATICALLY DRAWN AND DO NOT REFLECT THE TOTAL NUMBER OF POSTS AND FENCE SPACES NECESSARY FOR CONSTRUCTION OF THE FENCE. SEE FENCE DETAILS FOR SPECIFIC POST SPACING.
 2. FENCING LAYOUT IS TO BE REVIEWED BY OWNER AND LANDSCAPE ARCHITECT IN FIELD PRIOR TO ORDERING MATERIALS AND INSTALLATION.
 3. ALL CHAIN LINK FENCE TO BE BLACK VINYL-COATED. HEIGHT PER PLAN.
 4. EACH SPORT NETTING SYSTEM STARTS AND TERMINATES W/ A 6" STEEL POLE W/ ANOTHER 6" STEEL POLE SPACED EVERY 100 FT. 4" STEEL POLES SPACED EVERY 20" BETWEEN EA. 6" POLE.
 5. POLE AND POST ARE USED INTERCHANGEABLY ON PLAN.



- NOTES:**
1. WHEN SIGNS ATTACHED TO 4' HEIGHT CHAIN LINK FENCE, TOP OF SIGN PANEL TO BE SET APPROXIMATELY 3" BELOW TOP POST/BEAM.
 2. WHEN SIGNS ATTACHED TO 4' HEIGHT ORNAMENTAL FENCE, TOP OF SIGN PANEL TO BE SET APPROXIMATELY 1" BELOW SECONDARY TOP POST/BEAM.



2 IDENTIFICATION SIGNS
SCALE: 1"=2'-0"
(LOCATIONS PER PLAN)



1 ENTRANCE SIGN
SCALE: 1"=2'-0"

EXISTING		NEW	
	TREE (H-HARDWOOD/ E-EVERGREEN)		6" INDICATES POST SIZE
	TELEPHONE PEDESTAL		CLF CHAIN LINK FENCE
	LIGHT POLE		ORN ORNAMENTAL
	UTILITY POLE		4' HT. ORNAMENTAL FENCE EMBEDDED OR SURFACE MOUNTED
	WATER VALVE		4' HT. BLACK VINYL-COATED (CLF) W/ 16' SPORT NETTING
	FIRE HYDRANT		8' HT. BLACK VINYL-COATED (CLF) W/ 12' SPORT NETTING TO 20'HT. MAX.
	WATER METER		20' HT. SPORTS NETTING
	SANITARY SEWER MANHOLE (LANCASTER COUNTY WATER & SEWER DISTRICT)		8' HT. BLACK VINYL-COATED CLF
	DOUBLE SWING GATE (SIZE SHOWN ON PLAN)		8' HT. BLACK VINYL-COATED CLF W/VINYL SLATS
	SWING GATE (SIZE SHOWN ON PLAN)		4' HT. ORNAMENTAL FENCE (CLF) W/ 16' SPORT NETTING
	FENCE SET IDENTIFICATION SIGN (TYP. OF 6)		4' HT. BLACK VINYL-COATED (CLF) W/ 12' SPORT NETTING TO 20'HT. MAX.
	POST SET IDENTIFICATION SIGN (TYP. OF 2)		4' HT. ORNAMENTAL FENCE-GATE (TYP. OF 3 AT PLAYGROUND)
	R1-1 "STOP" (24"x24", EXCEPT AS NOTED AT PRIMARY ENTRY)		4' WIDE ORNAMENTAL FENCE-GATE (TYP. OF 3 AT PLAYGROUND)
	24" WHITE STOP BAR (THERMOPLASTIC)		5' WIDE GATE