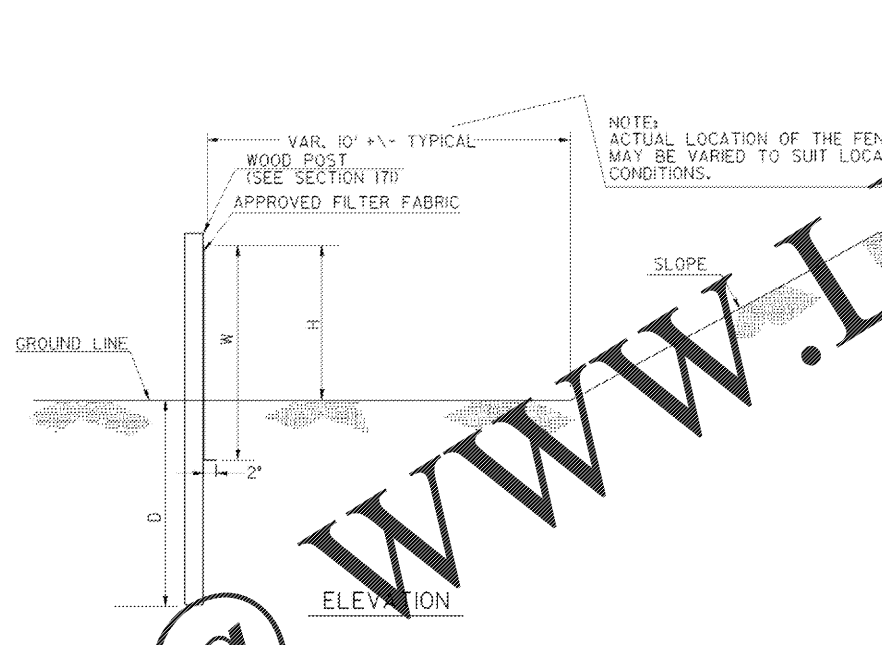
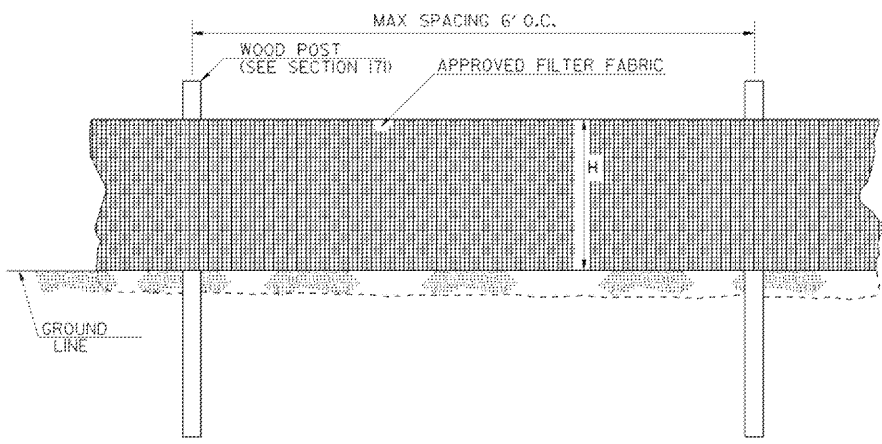
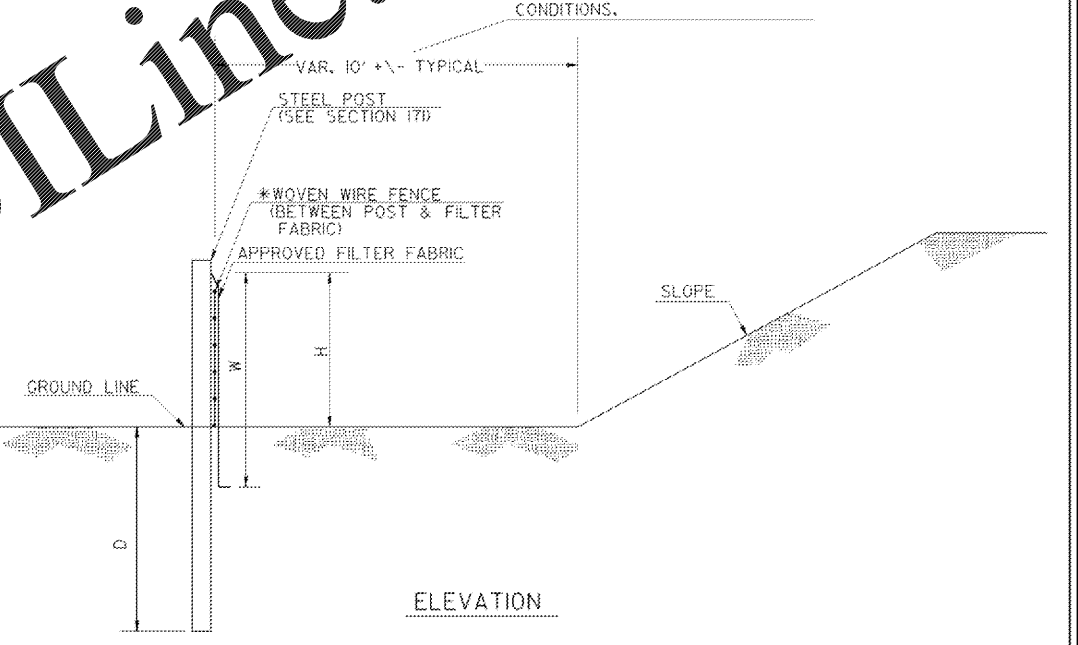
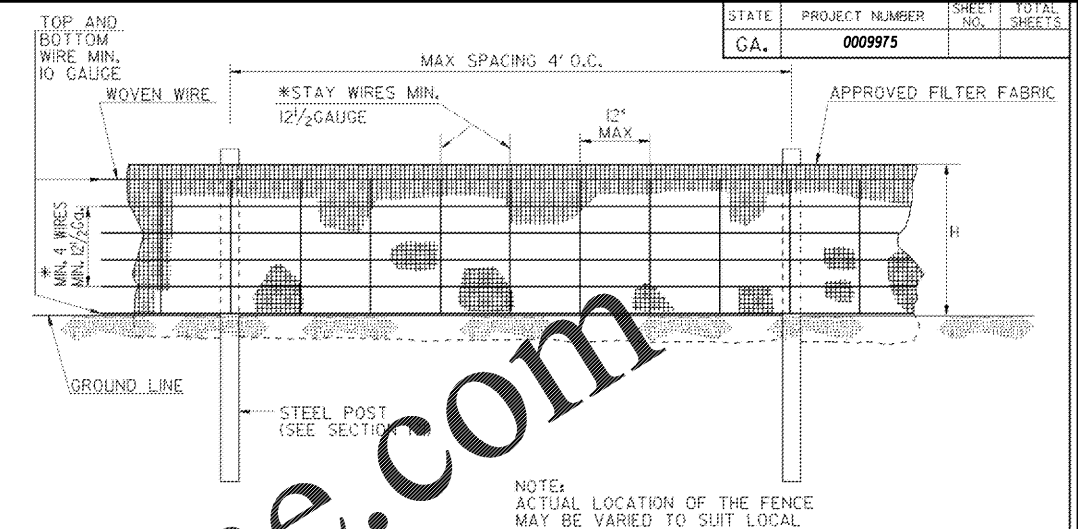


SINGLE ROW TYPE C SILT FENCE WITH POLYPROPYLENE MESH SUPPORT



SINGLE ROW TYPE A SILT FENCE



SINGLE ROW TYPE C SILT FENCE WITH WOVEN WIRE SUPPORT

| FENCE TYPE | POST LENGTH | H | D | W | TYPICAL USES |
|------------|-------------|-------|-------|-------|---|
| TYPE "A" | 4 FT. | 2'-4" | 1'-6" | 3'-0" | |
| TYPE "C" | 4 FT. | 2'-4" | 1'-6" | 3'-0" | AT BRIDGE END ROLLS, TIE ROW ALONG STREAMS, WETLANDS AND ENVIRONMENTALLY SENSITIVE AREAS OR USE OF THIS MATERIAL IN FABRIC CHECKDAMS (SEE D-24D). |

NOTES:

1. WIRE STAPLES SHALL BE AT LEAST 17 GAUGE, WITH LEGS AT LEAST 1/2 INCHES LONG AND A CROWN AT LEAST 3/4 INCHES WIDE. NAILS SHALL BE AT LEAST 14 GAUGE, 1 1/2 INCHES LONG, WITH BOTTOM HEADS AT LEAST 3/4 INCHES WIDE.
2. NAILS OR STAPLES SHALL BE EVENLY PLACED WITH AT LEAST 5 PER POST FOR TYPE A FENCE AND 4 PER POST FOR TYPE C FENCE.
3. THE VERTICAL WIRES FOR THE WOVEN WIRE SUPPORT FENCE SHALL HAVE A MAXIMUM SPACING OF 12 INCHES. THE TOP AND BOTTOM WIRES SHALL BE AT LEAST 10 GAUGE AND ALL OTHER WIRES SHALL BE AT LEAST 12 1/2 GAUGE.
4. TEMPORARY SILT FENCE INSTALLATION IS DIFFERENT THAN THE SILT RETENTION BARRIER INSTALLATION.
5. SEE SECTION 171 FOR SILT FENCE SPECIFICATIONS.
6. SEE SECTION 894 FOR FENCING SPECIFICATIONS.
7. SEE OPL-36 FOR A LIST APPROVED SILT FENCE FABRIC.
8. TEMPORARY SILT FENCE SHALL NOT BE PLACED WITHIN STATE WATERS UNLESS PERMITTED.

| | | | |
|----------|--|--|--|
| DATE | | DEPARTMENT OF TRANSPORTATION STATE OF GEORGIA | |
| REVISION | | CONSTRUCTION DETAILS | |
| | | TEMPORARY SILT FENCE | |
| NO SCALE | | REV. AND REDRAWN JAN. 2011 | |
| BY | | NUMBER D-24A (SHEET 1 OF 4) | |