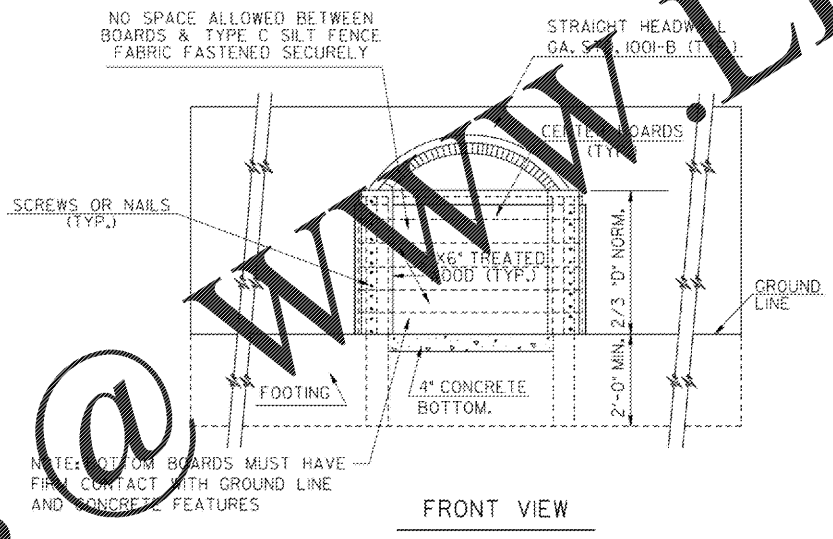
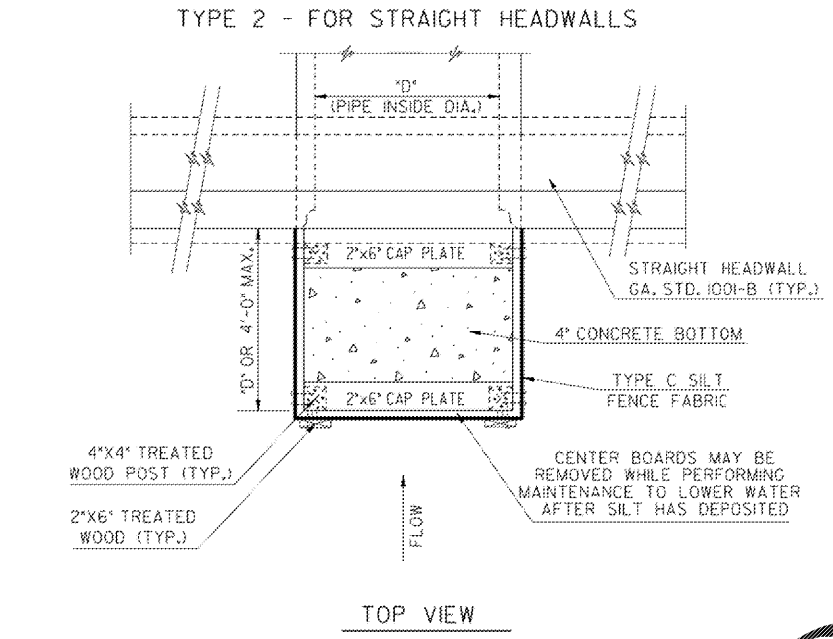


- SILT CONTROL GATE TYPE 1 NOTES:**
- REFER TO GA. STD 2332 FOR CONCRETE APRONS.
  - SEE SECTION 163 FOR THE REMOVAL OF TYPE 1 SILT CONTROL GATES.

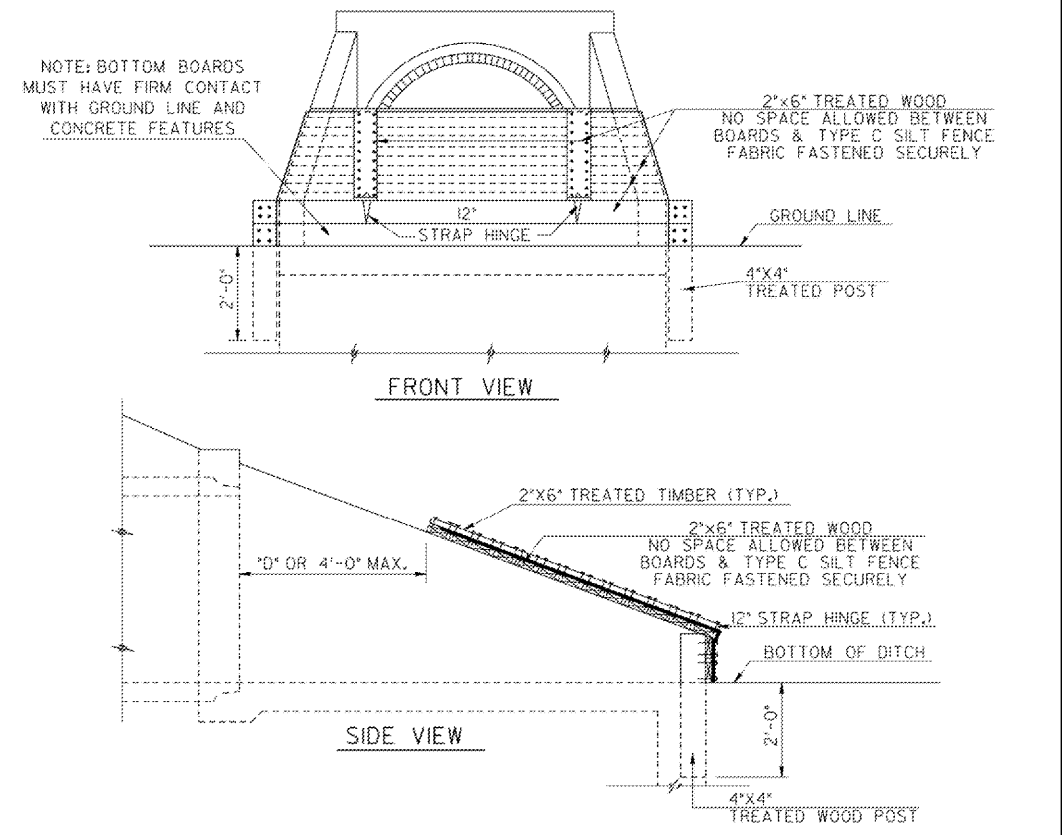
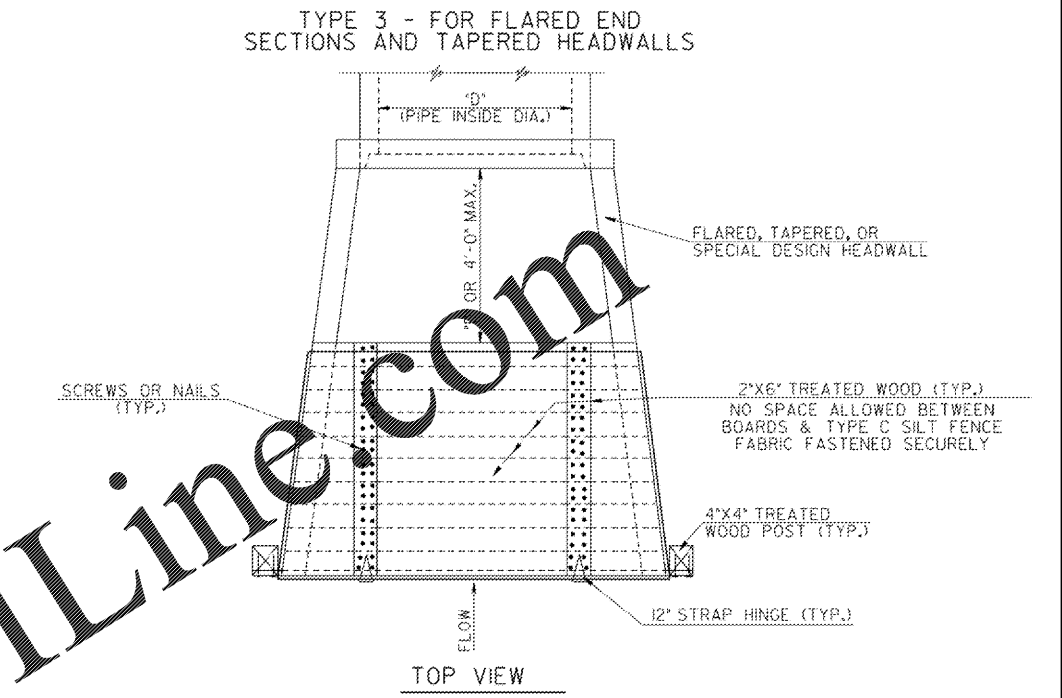
- GENERAL NOTES:**
- A SILT CONTROL GATE IS A TEMPORARY STRUCTURE PLACED AT INLETS TO FORM A BASIN FOR TRAPPING SEDIMENT.
  - SILT GATES SHALL NOT BE USED ON STRUCTURES CONVEY STATE WATERS.
  - SILT GATES SHALL ONLY BE USED ON DRAINAGE AREAS UP TO 50-ACRES WITH NO MORE THAN 5-ACRES DISTURBED WITHIN THE DRAINAGE AREA.
  - USE WOOD SCREWS OR NAILS TO CONNECT WOOD COMPONENTS WITH NO SPACE ALLOWED BETWEEN BOARDS. TYPE C SILT FENCE FABRIC MUST BE FASTENED SECURELY WITH STAPLES OR NAILS TO OUTSIDE FACE OF BOARDS AND COVERING ALL BUTT-JOINTS BETWEEN BOARDS. OVERLAP ADDITIONAL SILT FENCE FABRIC A MINIMUM OF 12-INCHES.
  - REMOVE SEDIMENT WHEN IT REACHES ONE-THIRD THE HEIGHT OF SILT CONTROL GATE AND SILT FENCE FABRIC SHALL BE REPLACED WHEN DAMAGED OR DETERIORATED.

**PAY ITEMS:**

163-0501	CONSTRUCT AND REMOVE SILT CONTROL GATE, TP 1	(EA)
163-0502	CONSTRUCT AND REMOVE SILT CONTROL GATE, TP 2	(EA)
163-0503	CONSTRUCT AND REMOVE SILT CONTROL GATE, TP 3	(EA)
165-0085	MAINTENANCE OF SILT CONTROL GATE, TP 1	(EA)
165-0086	MAINTENANCE OF SILT CONTROL GATE, TP 2	(EA)
165-0087	MAINTENANCE OF SILT CONTROL GATE, TP 3	(EA)



NOTE: BOTTOM BOARDS MUST HAVE FIRM CONTACT WITH GROUND LINE AND CONCRETE FEATURES



ADD. FABRIC & ADD. NOTES	4-22-05	DEPARTMENT OF TRANSPORTATION STATE OF GEORGIA
ADD. & REV SILT GATE NOTES	1-19-11	
REMOVE INLET SEDIMENT TRAP		
REV. LUMBER SIZES	3-21-05	
GLO REV. SPECIFICATION	10-22-02	CONSTRUCTION DETAILS
MCR		
BY		SILT CONTROL GATES FOR STRUCTURES TYPE - 1, 2, AND 3
		NO SCALE
		REV. & REDR. DEC., 2000
		NUMBER D-20