

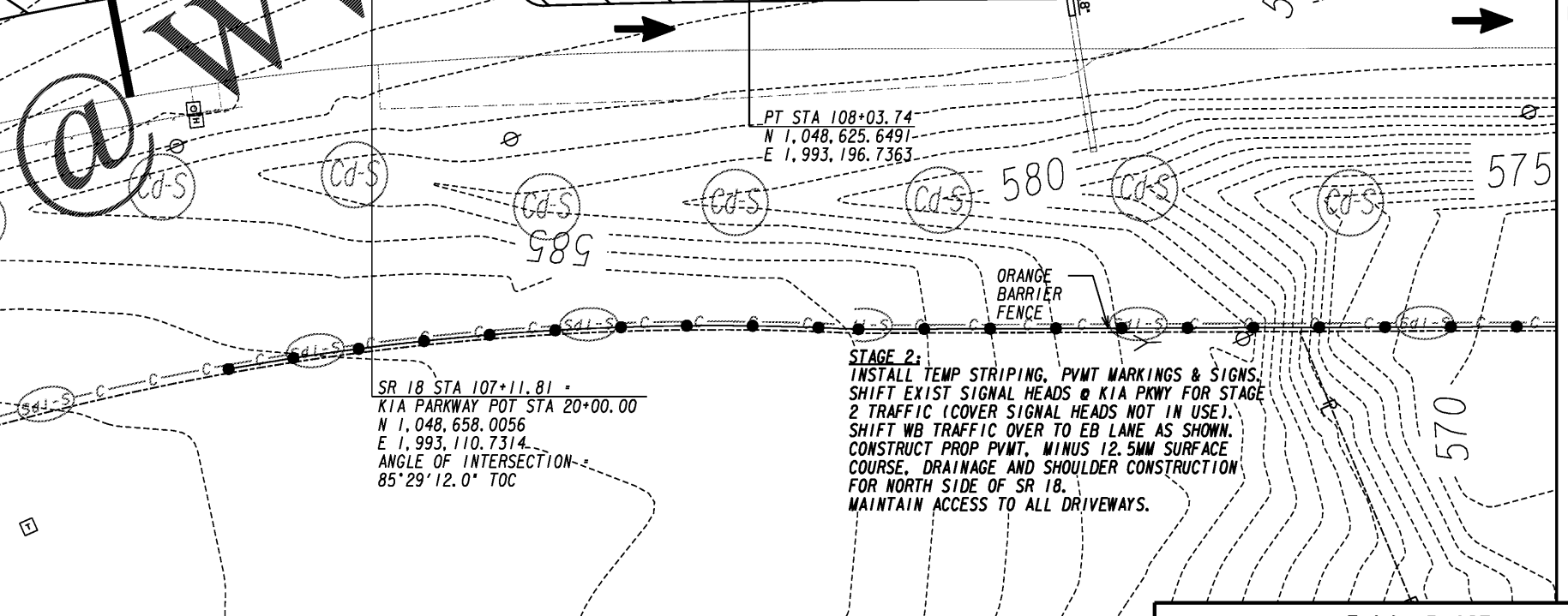
ESA - SEE ENVIRONMENTAL RESOURCES IMPACT TABLE IN GENERAL NOTES FOR CONSTRUCTION RESTRICTIONS

Curve #1
 PI Sta: 104+24.44
 N: 1048809.4375
 E: 1992779.2456
 DELTA: 57°07'19.8" (RT)
 D: 6°50'13.9"
 T: 456.15'
 L: 835.46'
 R: 838.00'
 E: 116.11'
 e: MATCH EXIST

MATCHLINE STA 104+50.00
 SEE SHEET 54-001

MATCHLINE STA 110+00.00
 SEE SHEET 54-0021

Order Plans



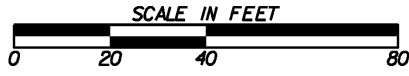
SR 18 STA 107+11.81
 KIA PARKWAY POT STA 20+00.00
 N 1,048,658.0056
 E 1,993,110.7314
 ANGLE OF INTERSECTION =
 85°29'12.0" TOC

STAGE 2:
 INSTALL TEMP STRIPING, PVT MARKINGS & SIGNS.
 SHIFT EXIST SIGNAL HEADS @ KIA PKWY FOR STAGE
 2 TRAFFIC (COVER SIGNAL HEADS NOT IN USE).
 SHIFT WB TRAFFIC OVER TO EB LANE AS SHOWN.
 CONSTRUCT PROP PVT, MINUS 12.5MM SURFACE
 COURSE, DRAINAGE AND SHOULDER CONSTRUCTION
 FOR NORTH SIDE OF SR 18.
 MAINTAIN ACCESS TO ALL DRIVEWAYS.

PROPERTY AND EXISTING R/W LINE
 REQUIRED R/W LINE
 CONSTRUCTION LIMITS
 EASEMENT FOR CONSTR
 & MAINTENANCE OF SLOPES
 EASEMENT FOR CONSTR OF SLOPES
 EASEMENT FOR CONSTR OF DRIVES

---e--- BEGIN LIMIT OF ACCESS.....BLA
 ---f--- END LIMIT OF ACCESS.....ELA
 ---c--- LIMIT OF ACCESS
 ---f--- REQ'D R/W & LIMIT OF ACCESS
 [Hatched] ORANGE BARRIER FENCE
 [Dashed] ESA - ENV. SENSITIVE AREA
 (SEE ERIT TABLE)

INFRASTRUCTURE
 CONSULTING & ENGINEERING
 4940 PEACHTREE INDUSTRIAL BLVD., SUITE 310
 NORCROSS, GEORGIA 30071



REVISION DATES	

FINAL PHASE
BMP LOCATION DETAILS
SR 18 BRIDGE REPLACEMENT @ LONG CANE CREEK
TROUP COUNTY
STAGE 2 STA 104+50.00 TO STA 110+00.00

CHECKED:	DATE:	DRAWING No.
BACKCHECKED:	DATE:	54-0020
CORRECTED:	DATE:	
VERIFIED:	DATE:	