

ESA - SEE ENVIRONMENTAL RESOURCES IMPACT TABLE IN GENERAL NOTES FOR CONSTRUCTION RESTRICTIONS

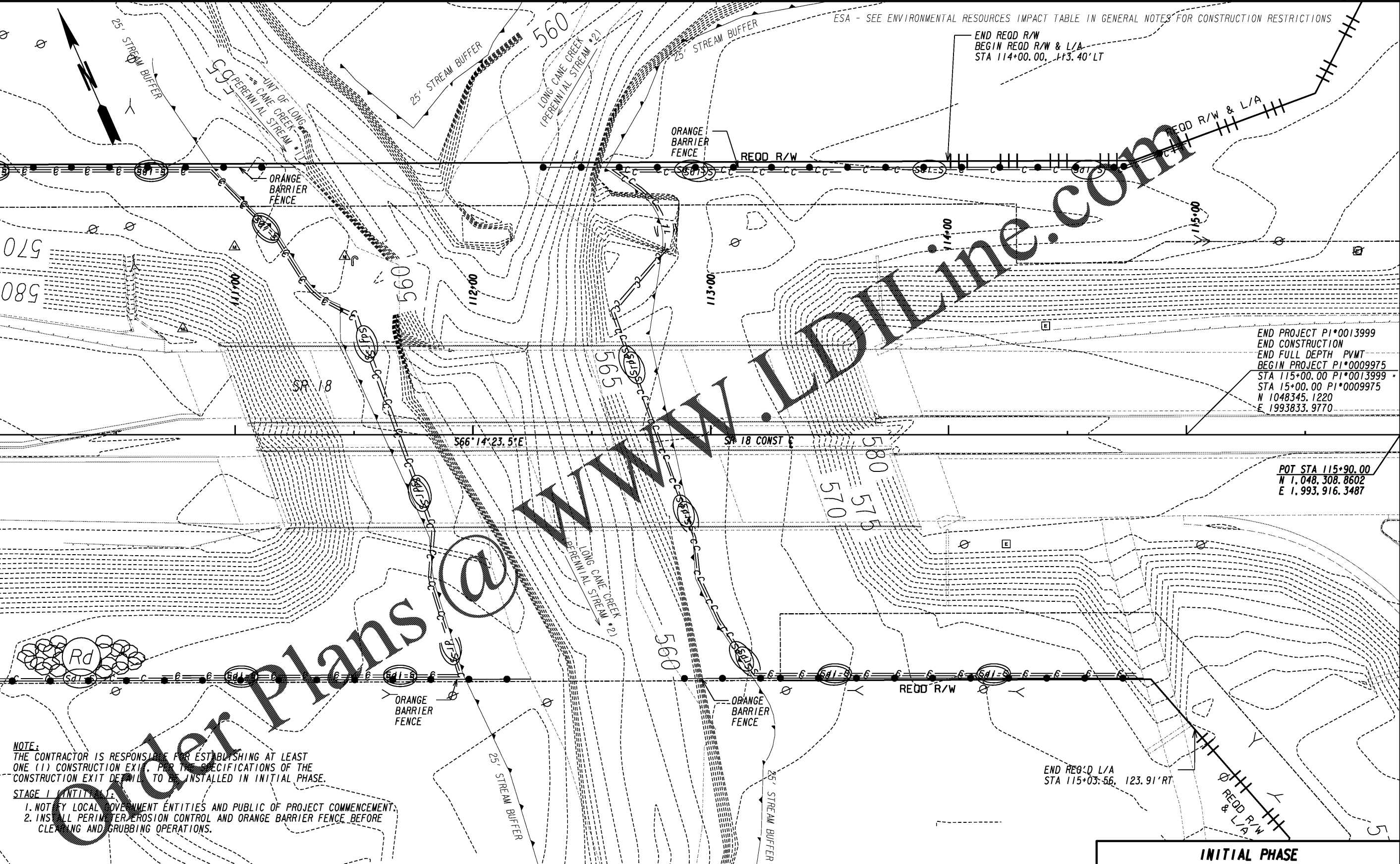
END REQ'D R/W
BEGIN REQ'D R/W & L/A
STA 114+00.00, +13.40'LT

END PROJECT PI*0013999
END CONSTRUCTION
END FULL DEPTH PVMT
BEGIN PROJECT PI*0009975
STA 115+00.00 PI*0013999
STA 15+00.00 PI*0009975
N 1048345.1220
E 1993833.9770

POT STA 115+90.00
N 1,048,308.8602
E 1,993,916.3487

END REQ'D L/A
STA 115+03.56, 123.91'RT

MATCHLINE STA 110+00.00
SEE SHEET 54-0002



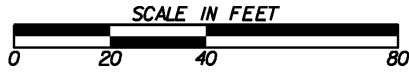
NOTE:
THE CONTRACTOR IS RESPONSIBLE FOR ESTABLISHING AT LEAST ONE (1) CONSTRUCTION EXIT, PER THE SPECIFICATIONS OF THE CONSTRUCTION EXIT DETAIL, TO BE INSTALLED IN INITIAL PHASE.

- STAGE I INTENTIONS:
- 1. NOTIFY LOCAL GOVERNMENT ENTITIES AND PUBLIC OF PROJECT COMMENCEMENT.
 - 2. INSTALL PERIMETER EROSION CONTROL AND ORANGE BARRIER FENCE BEFORE CLEARING AND GRUBBING OPERATIONS.

PROPERTY AND EXISTING R/W LINE	---
REQUIRED R/W LINE	---
CONSTRUCTION LIMITS	---
EASEMENT FOR CONSTR & MAINTENANCE OF SLOPES	---
EASEMENT FOR CONSTR OF SLOPES	---
EASEMENT FOR CONSTR OF DRIVES	---

BEGIN LIMIT OF ACCESS.....BLA	---
END LIMIT OF ACCESS.....ELA	---
LIMIT OF ACCESS	---
REQ'D R/W & LIMIT OF ACCESS	---
ORANGE BARRIER FENCE	---
ESA - ENV. SENSITIVE AREA (SEE ERIT TABLE)	---

INFRASTRUCTURE
CONSULTING & ENGINEERING
4940 PEACHTREE INDUSTRIAL BLVD., SUITE 310
NORCROSS, GEORGIA 30071



REVISION DATES	

INITIAL PHASE
BMP LOCATION DETAILS
SR 18 BRIDGE REPLACEMENT @ LONG CANE CREEK
TROUP COUNTY
STA 110+00.00 TO STA 115+00.00

CHECKED:	DATE:	DRAWING No.
BACKCHECKED:	DATE:	54-0003
CORRECTED:	DATE:	
VERIFIED:	DATE:	