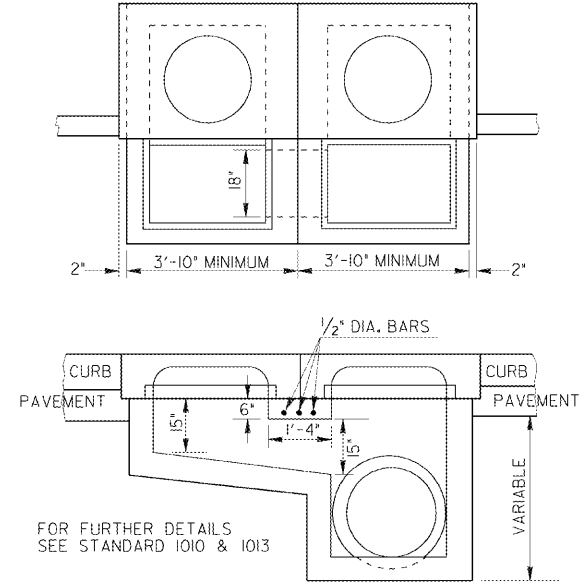
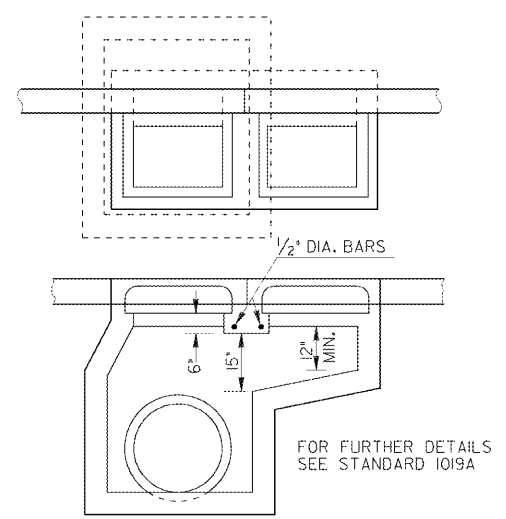


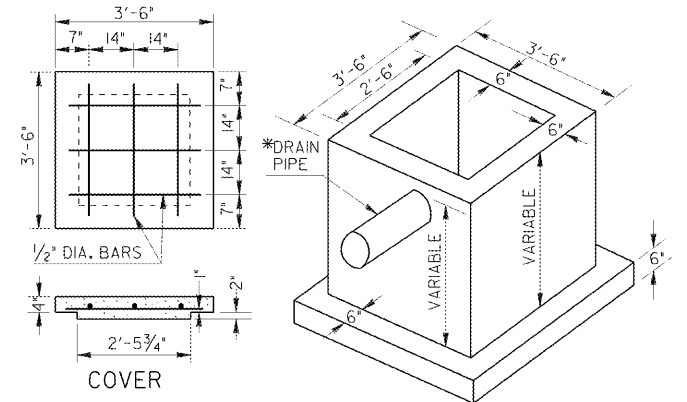
DETAIL OF CATCH BASIN MODIFIED FOR DOUBLE GRATES



DETAIL OF DROP INLET MODIFIED FOR DOUBLE GRATES



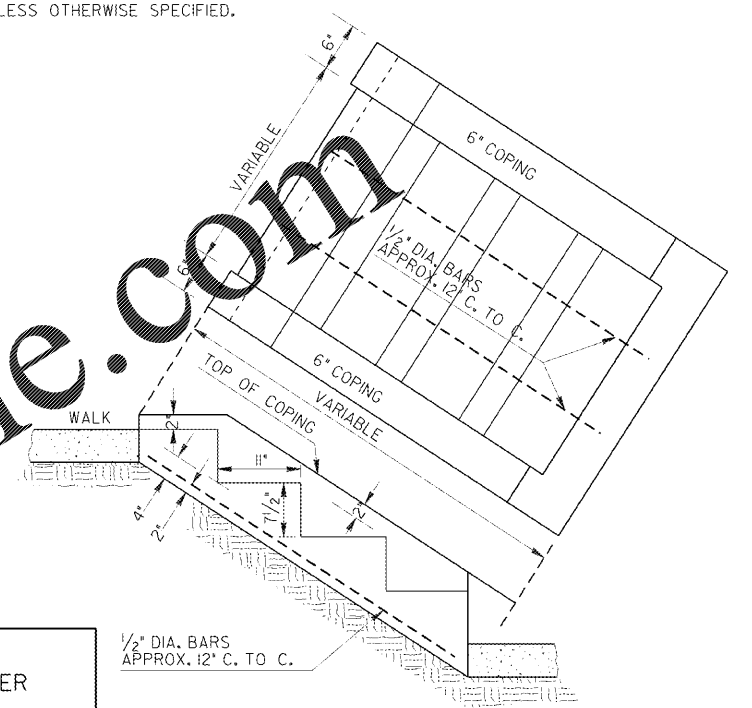
DETAIL OF CONCRETE SPRING BOX



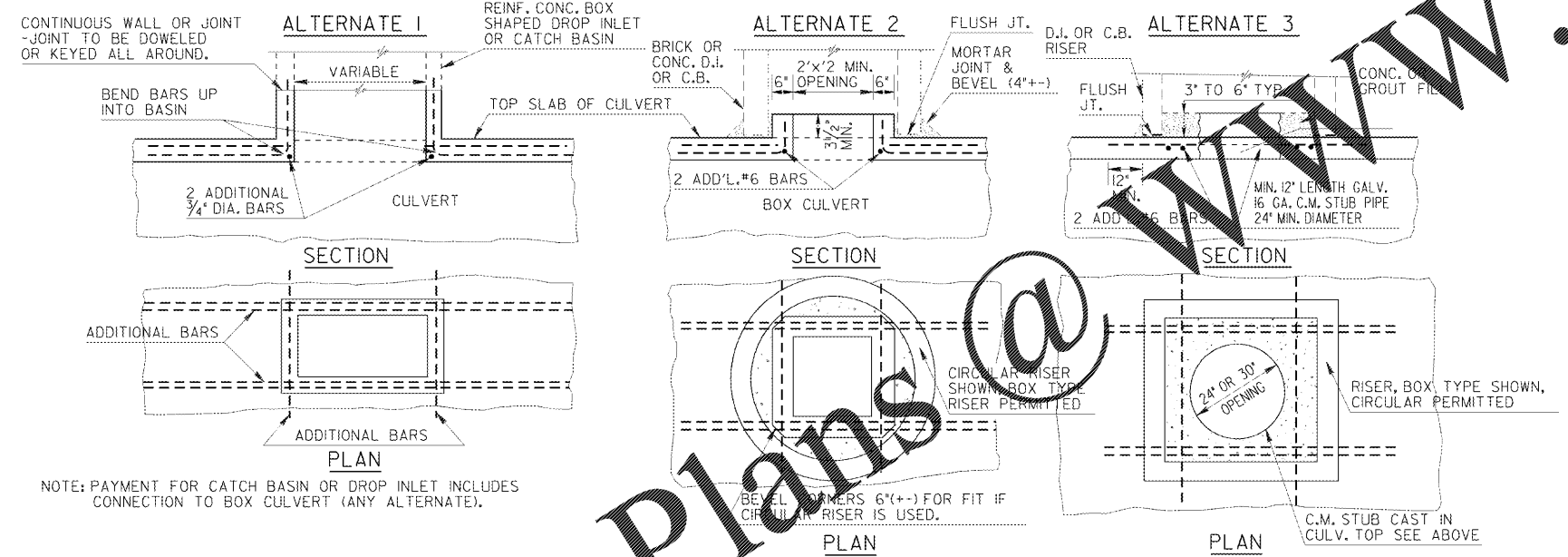
NOTE: SPRING BOX TO BE CONSTRUCTED OF CLASS "A" CONCRETE.  
 \*DRAIN PIPE SHALL BE 6" PERFORATED UNDERDRAIN PIPE, EXCEPT WHERE OTHERWISE SPECIFIED. (2" GALV. PIPE USED ONLY IN SPECIAL CASES.) PAYMENT FOR SPRING BOX INCLUDES 4'-6" MIN. LENGTH OF DRAIN PIPE. ANY ADDITIONAL PIPE REQUIRED SHALL BE PAID FOR SEPARATELY.

DETAIL OF CONCRETE STEPS

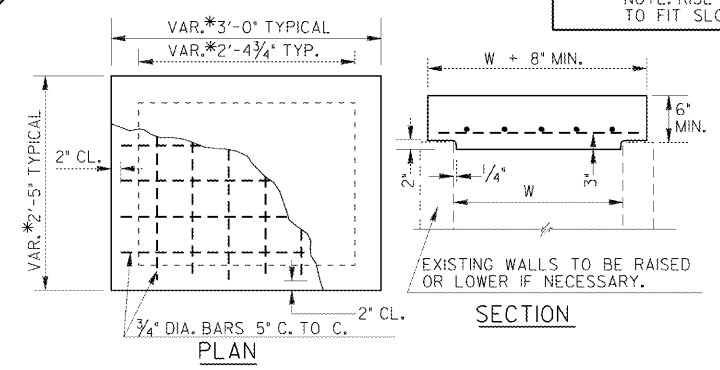
NOTE: BASIS OF PAYMENT SHALL BE CLASS "B" CONC. INCL. REINF. STEEL UNLESS OTHERWISE SPECIFIED.



DETAILS OF CATCH BASIN OR DROP INLET CONNECTION TO CONCRETE BOX CULVERT



DETAILS FOR CAPPING EXISTING DROP INLET WITH CONCRETE COVER



NOTE: CONCRETE COVER SHOWN IS FOR USE IN CAPPING MINOR STRUCTURE WHERE CONVERSION FROM DROP INLET TO JUNCTION BOX IS DESIRED, SEE STD. 1011A REINFORCED CONCRETE COVER FOR CONVERSION TO MANHOLE.  
 \* DIMENSIONS INDICATED ABOVE ARE TYPICAL FOR APPLICATION WITH STD. 1019A DROP INLET AND WILL VARY ACCORDING TO STRUCTURE; HOWEVER, NO INSIDE DIMENSION SHOULD EXCEED 4'-0" WITHOUT STRUCTURAL REVIEW. INLET DIMENSIONS SHOULD BE DETERMINED PRIOR TO CASTING CONC. COVER.  
 NOTE: IF STRUCTURE IS TO BE UNDER TRAFFIC AND DOES NOT HAVE ONE FT. MIN. CLEARANCE TO SUBBASE, THE SLAB THICKNESS SHALL BE INCREASED BY 4" AND THE REBARS SIZE INCREASES FROM 3/4" DIA. TO 1" DIA.

Order Plans @ WWW.LDILINE.COM

6-30-88		DATE	
REDRAWN		REVISION	
RET. WALL TABLE ADDED		2-15-83	
ADD PIPE PLUG DETAILS		DATE	
BY		NO SCALE:	
G.J.P.		REV. & REDR. DECEMBER, 1982	
R.M.J.		STATE ROAD & AIRPORT DESIGN ENGR.	
R.M.J.		(APPROVED)	
BY		R.K.C.	
G.M.E.		CHIEF ENGINEER	
R.K.C.		NUMBER 9031L	
		SHEET 2 OF 2	