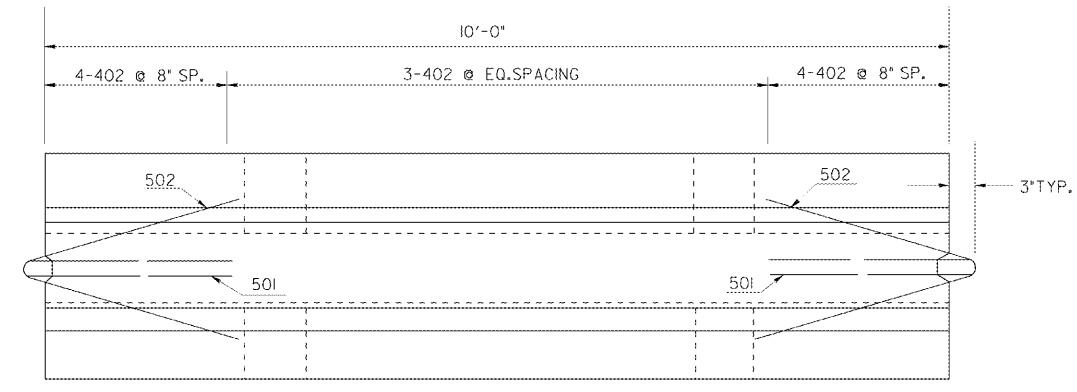


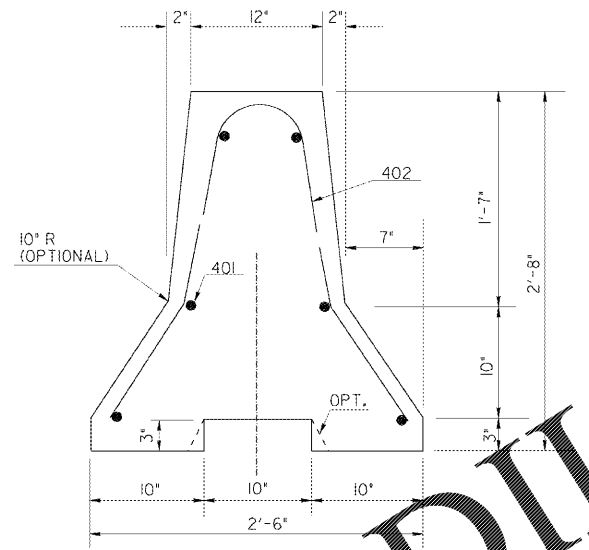
STATE	PROJECT NUMBER	SHEET NO.	TOTAL SHEETS
GA.			

PRECAST CONCRETE BARRIER DETAILS

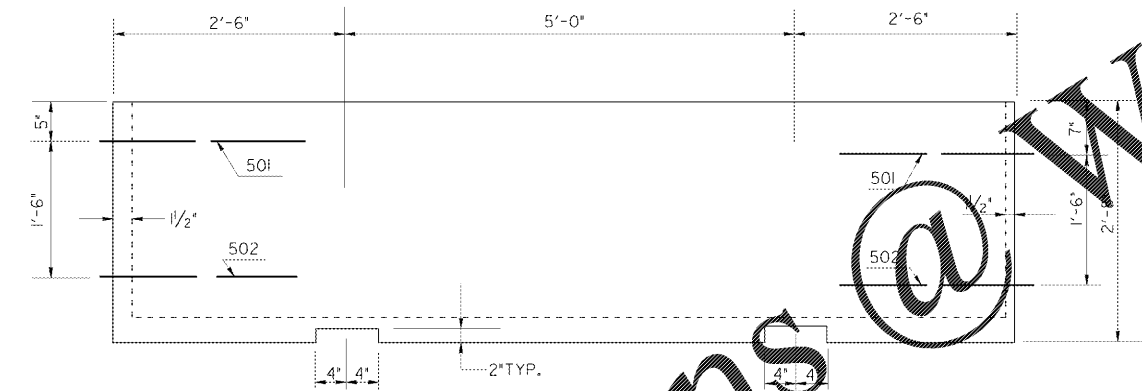


PLAN

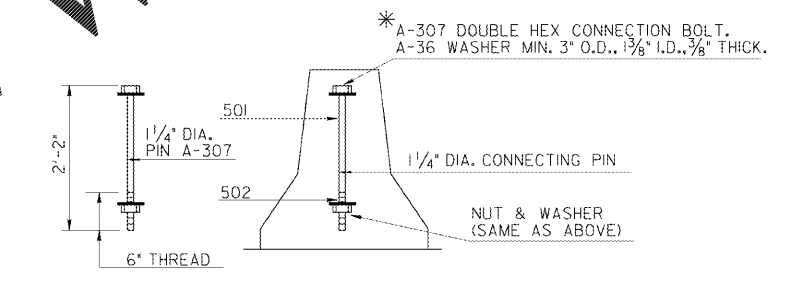
NOTE:  
BARRIER SECTIONS SHALL BE CONNECTED TOGETHER WITH THE 1 1/4" DIA. A-307 DOUBLE HEX CONNECTION BOLT. THE BOTTOM NUT & WASHER SHALL BE MAINTAINED BY THE CONTRACTOR FOR THE DURATION OF THE BARRIER INSTALLATION.



END ELEVATION



SIDE VIEW

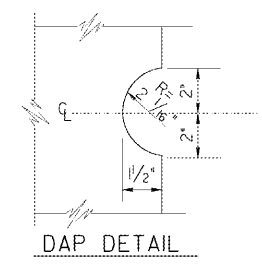
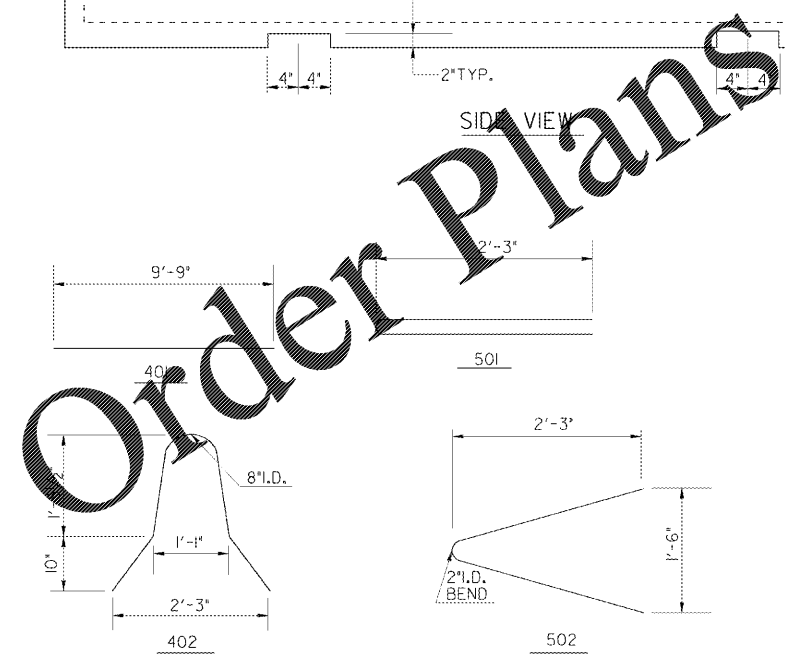


PIN CONNECTION

\* AN ALTERNATE CONNECTING PIN WITH A FUSED NUT ON THE TOP THREADED PORTION AND NUT AND WASHER AS SPECIFIED ON THE BOTTOM MAY ALSO BE USED.

GENERAL NOTES:

- 1-MATERIALS: CLASS 'A' CONCRETE AND 40 STEEL.
- 2-SEE GA. SPECIFICATIONS FOR BASIS OF PAYMENT AND METHOD NO. \_\_\_.
- 3-REINFORCEMENT, HAVING AN AREA AT LEAST EQUAL TO REBARS SHOWN, MAY BE USED AS AN ALTERNATE.
- 4-BARRIERS SHALL BE PLACED SUCH THAT OPENINGS BETWEEN INDIVIDUAL SECTIONS SHALL BE KEPT TO A MAXIMUM.



DAP DETAIL

REV. CONNECTION WASHER AND REV. GEN. NOTE NO. 4.		9-8-06	DEPARTMENT OF TRANSPORTATION	
REV. REBAR & PIN CONN.		5-2-01	STATE OF GEORGIA	
COTTER PIN REQUIREMENT		5-10-96	STANDARD	
REVISION			DETAILS OF PRECAST	
			TEMPORARY BARRIERS	
NO SCALE			AUG., 1995	
C.I.D.	DES. (SUBMITTED) <i>B.A.H.</i>		NUMBER	
R.M.U.	DRW. STATE ROAD & AIRPORT DESIGN ENGR.		4961	
BY	TRA. (APPROVED) <i>O.S. HULL</i>			
CHK.	CHK. CHIEF ENGINEER			