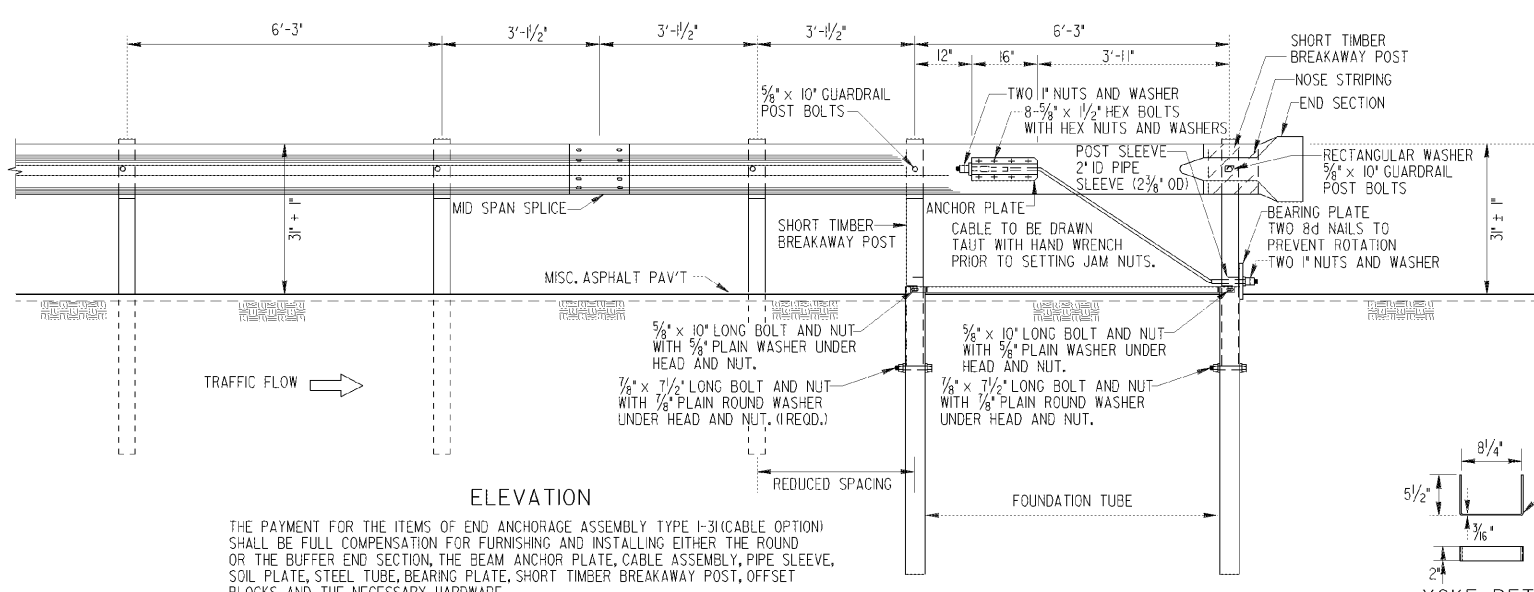
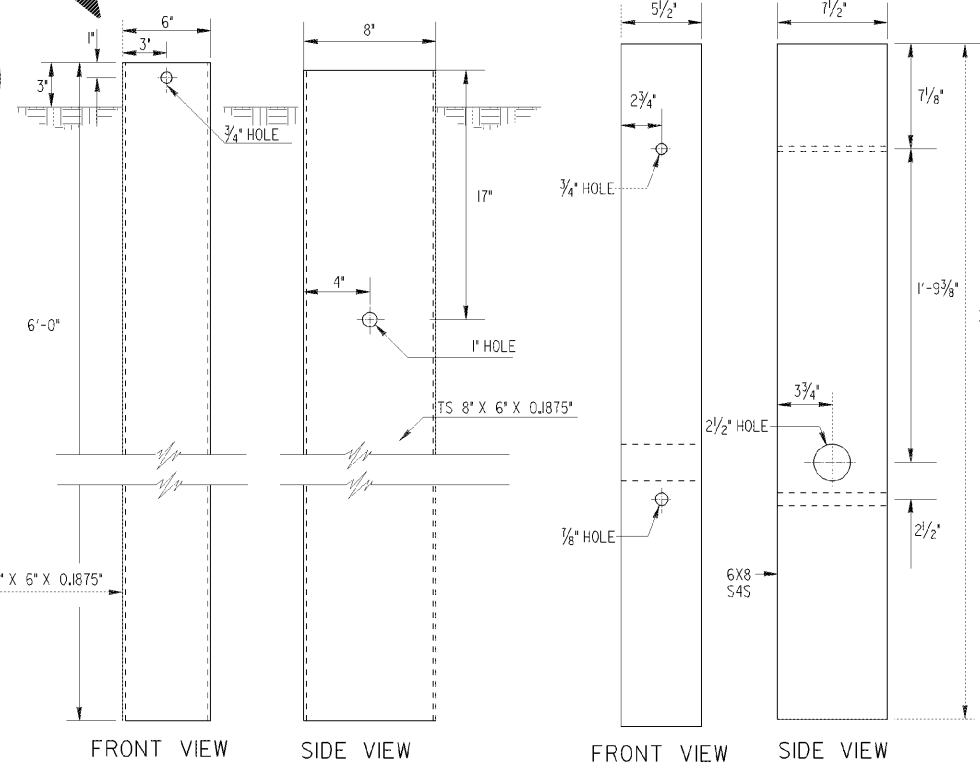
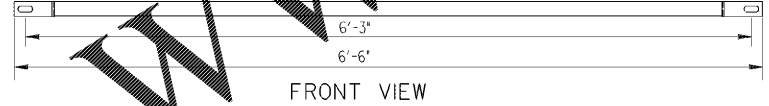
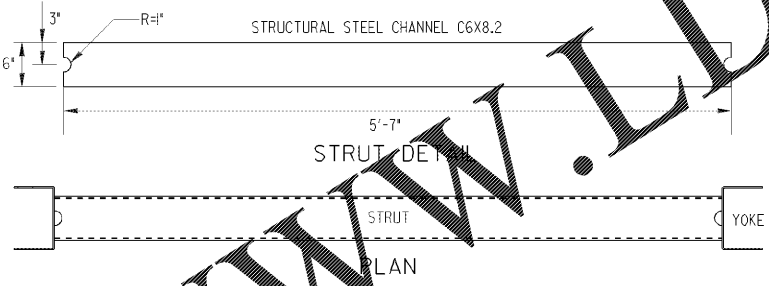
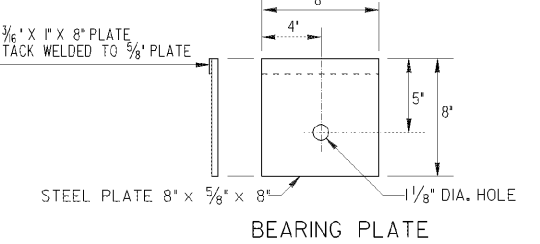
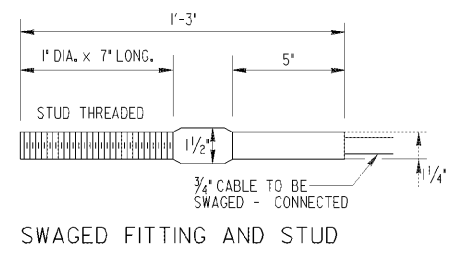


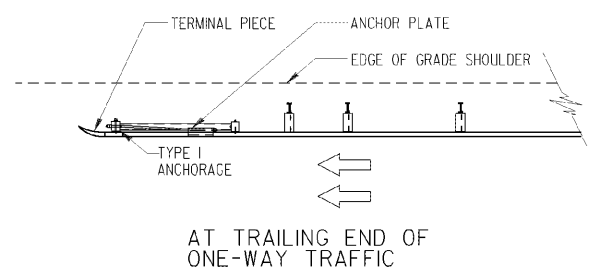
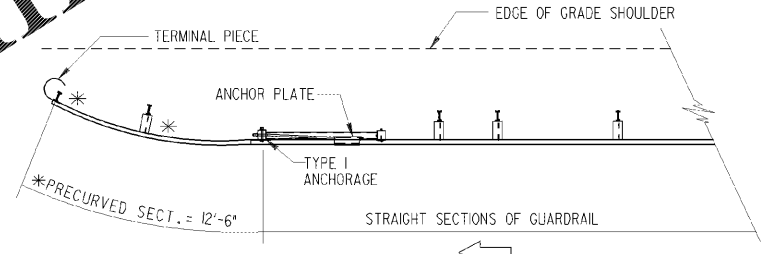
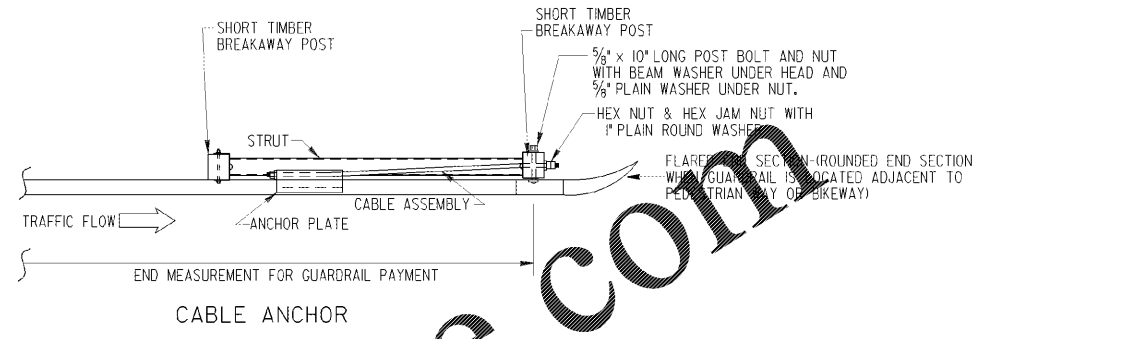
STATE	PROJECT NUMBER	SHEET NO.	TOTAL SHEETS
GA.			



THE PAYMENT FOR THE ITEMS OF END ANCHORAGE ASSEMBLY TYPE I-3(CABLE OPTION) SHALL BE FULL COMPENSATION FOR FURNISHING AND INSTALLING EITHER THE ROUND OR THE BUFFER END SECTION, THE BEAM ANCHOR PLATE, CABLE ASSEMBLY, PIPE SLEEVE, SOIL PLATE, STEEL TUBE, BEARING PLATE, SHORT TIMBER BREAKAWAY POST, OFFSET BLOCKS AND THE NECESSARY HARDWARE.



NOTE: SEE STANDARD 4382 FOR GUARDRAIL CONNECTION TO CONCRETE FACE.



NOTE: SEE STD. 4388 OR OTHER APPLICABLE DETAILS FOR REQUIREMENT FOR TYPE 12 ANCHORAGE ON THE TRAILING END.

- GENERAL NOTES:
- SPECIFICATIONS: GEORGIA STANDARD, CURRENT EDITION & SUPPLEMENTS THERE TO.
  - FOR DETAILS OF GUARDRAIL HARDWARE, POST, OTHER TYPE ANCHORAGE, LOCATION, ETC. SEE SEPARATE STANDARDS AS APPLICABLE.
  - GUARDRAIL INSTALLATIONS, INCLUDING ANCHORAGES AND CONNECTIONS, ARE TO BE COMPLETED BEFORE BEING SUBJECT TO TRAFFIC UNLESS OTHERWISE APPROVED.
  - PAYMENT FOR ANCHORAGE INCLUDES ANCHOR PLATE; 3/4" CABLE; BREAKAWAY POSTS; FOUNDATION TUBES; STRUT AND ALL ACCOMPANYING HARDWARE.

**Order Plans @**

ANCHOR PLATE DETAIL

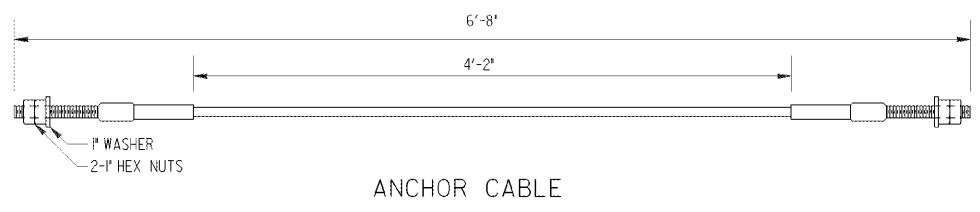
55° 2" 1'-3/4" 3/8" ONE PIECE STEEL PLATE

ANCHOR PLATE BEARING PLATE DETAIL

3" 1/2" 1 3/8" 2 3/4" 1/8" DIA. HOLE

ANCHOR PLATE BEARING PLATE DETAIL

NO ANCHOR PLATES SHOWN HERE WITH GUARDRAIL (TYPE T) ATTACHMENT TO GUARDRAIL (TYPE T) WILL BE THE SAME EXCEPT THAT THE ANCHOR PLATE WILL BE LOCATED BETWEEN THE BOTTOM AND MIDDLE CORRUGATIONS.



DATE		DEPARTMENT OF TRANSPORTATION STATE OF GEORGIA	
REVISION		STANDARD GUARDRAIL ANCHORAGE TYPE I 31 INCH GUARDRAIL HEIGHT	
NO SCALE		AUGUST 2011	
DES. G.L.O.	(SUBMITTED) <i>B. H. St.</i>	NUMBER	
DRW. G.L.O.	STATE DESIGN POLICY ENGINEER	4383	
CHK. B.R.E.	(APPROVED) <i>Donald M. P.</i>		
REVIEW B.A.S.	CHIEF ENGINEER		