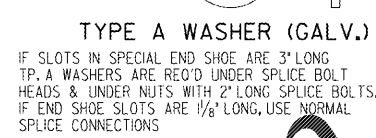
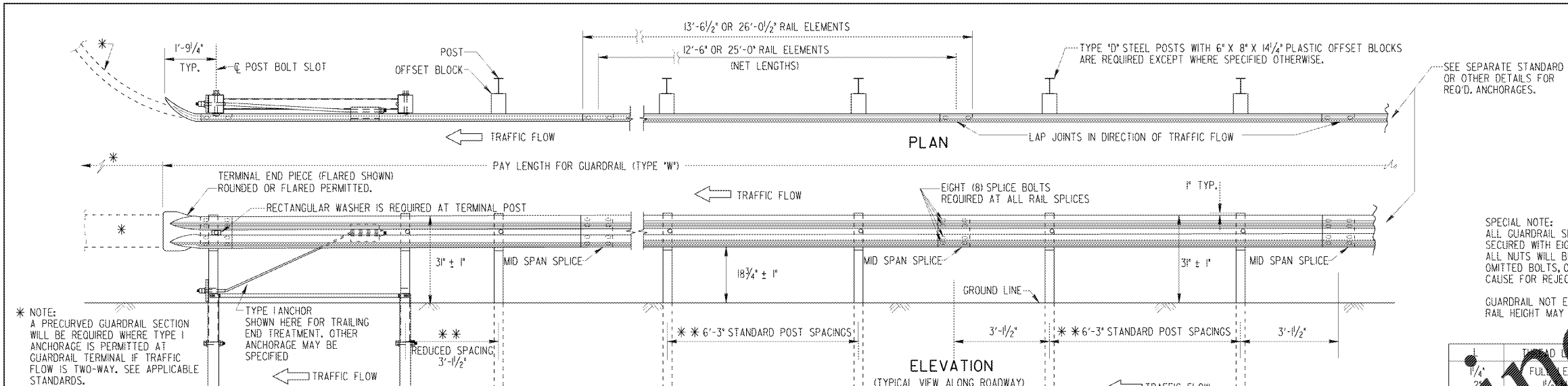
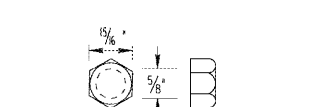


STATE	PROJECT NUMBER	SHEET NO.	TOTAL SHEETS
GA.			

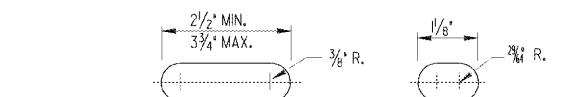


TYPE A WASHER (GALV.)
IF SLOTS IN SPECIAL END SHOE ARE 3" LONG TP. A WASHERS ARE REQ'D UNDER SPLICE BOLT HEADS & UNDER NUTS WITH 2" LONG SPLICE BOLTS. IF END SHOE SLOTS ARE 1 1/8" LONG, USE NORMAL SPLICE CONNECTIONS

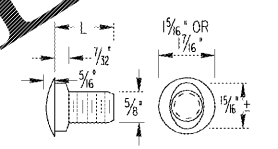


5/8" DIA. HEX NUT

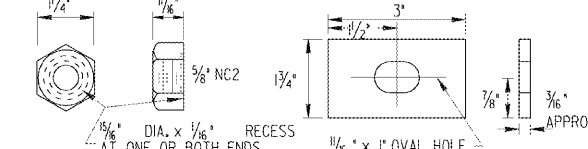
TYPE	MIN. LENGTH
1/4"	1 1/2"
3/8"	2"
1/2"	2 1/2"
5/8"	3"
3/4"	3 1/2"
1"	4"



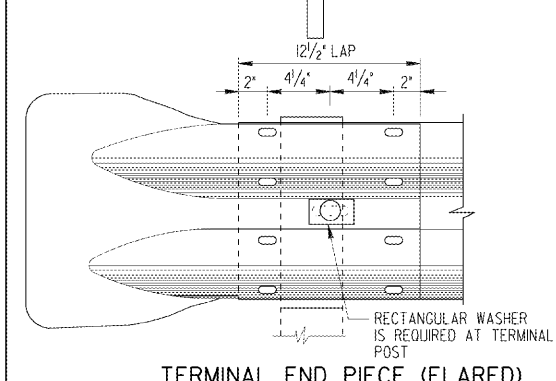
POST BOLT SLOT SPLICE BOLT SLOT



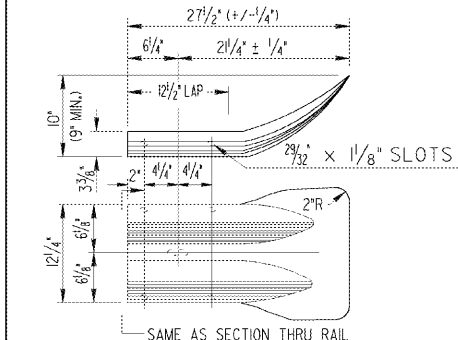
BUTTON HEAD (OR SPLICE) BOLT
(8 REQ'D PER SPLICE)



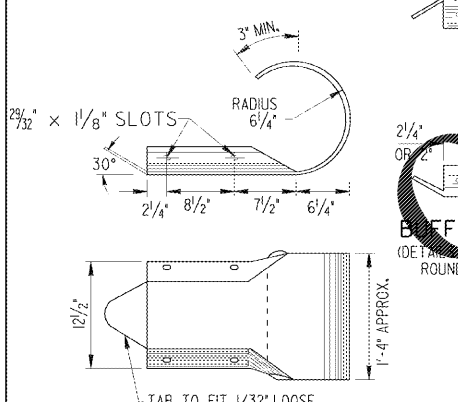
RECESS NUT **RECTANGULAR WASHER (GALV.)**
(FOR USE AT TERMINAL POST OR WHERE SPECIFIED)



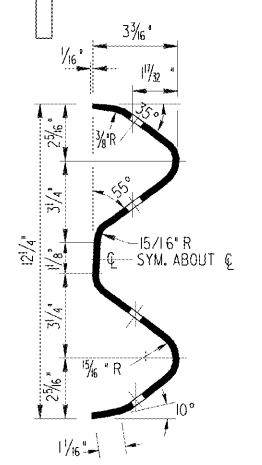
TERMINAL END PIECE (FLARED)



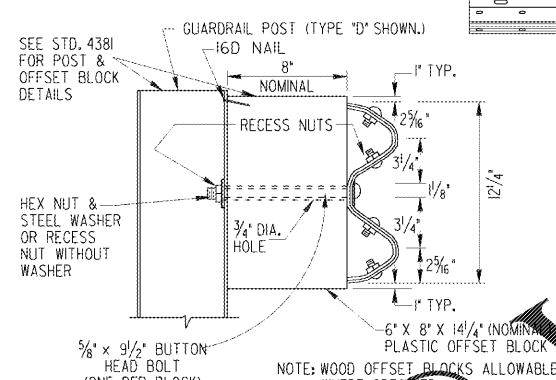
TERMINAL END PIECE (FLARED)



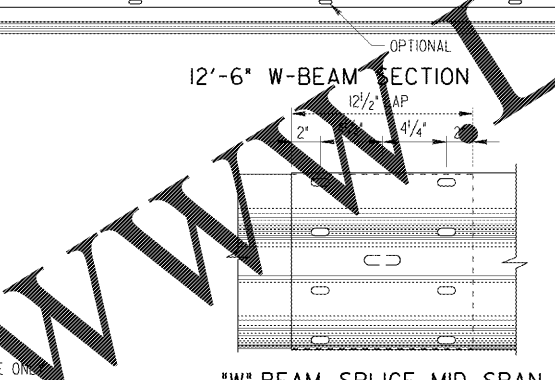
TERMINAL END PIECE (ROUNDED)



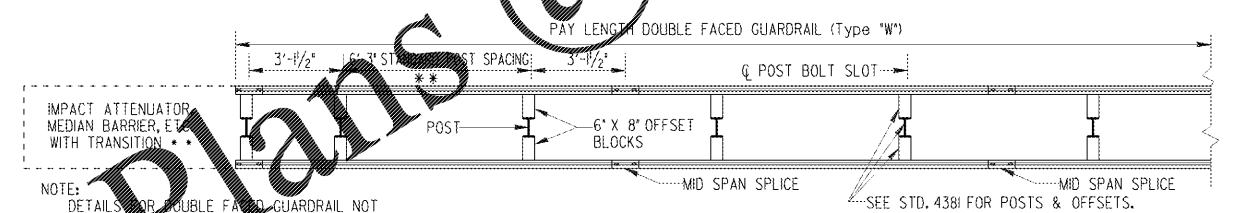
SECTION THROUGH RAIL ELEMENT



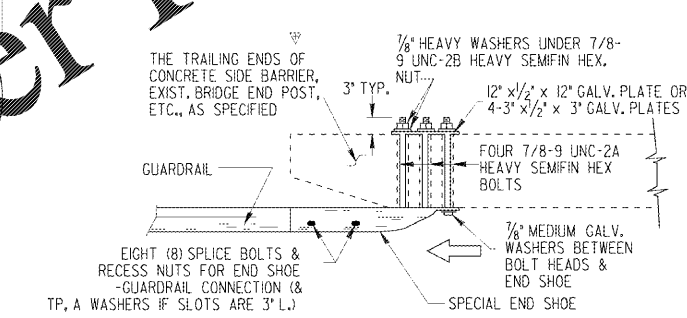
'W' BEAM OFFSET BLOCK DETAIL
NOTE: OFFSET BLOCKS FOR 'W' BEAM GUARDRAIL WILL BE PLASTIC EXCEPT WHERE SPECIFIED OTHERWISE.



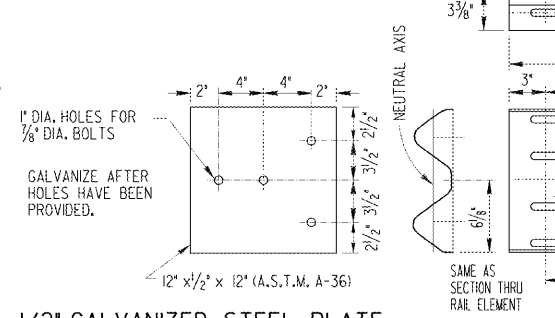
'W' BEAM SPLICE MID SPAN
NOTE: EIGHT (8) SPLICE BOLTS REQUIRED AT ALL RAIL SPLICES



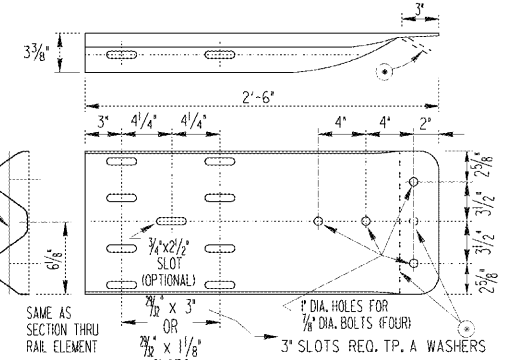
DOUBLE FACED GUARDRAIL (Type 'W')



TYPICAL END SHOE CONNECTION
NOTE: THE 'W' BEAM RAIL ELEMENT/END SHOE SPLICE SHALL BE LAPPED IN THE DIRECTION OF THE NEAREST TRAFFIC.



1/2" GALVANIZED STEEL PLATE
(TO BE USED WITH SPECIAL END SHOE CONNECTION UNDER NUTS & WASHERS ON BACK OF BRIDGE END POST OR BACK OF CONCRETE SIDE BARRIER) (FOUR 3" x 1/2" x 3" GALV. PLATES WITH 1" DIA. HOLE CENTERED, MAY BE USED AS AN ALTERNATE)



SPECIAL END SHOE DETAIL
(FOR USE IN CONNECTING GUARDRAIL TO BRIDGE END POST, CONCRETE BARRIERS, ETC.) SPECIAL END SHOE WILL BE 10 GAUGE STEEL GALVANIZED ACCORDING TO A.A.S.H.T.O. M-11

- GENERAL NOTES:
- SPECIFICATIONS: GEORGIA STANDARD CURRENT EDITION, AND SUPPLEMENTS THERETO.
 - NUTS, BOLTS, WASHERS, RAIL, TERMINAL SECTIONS, END SHOES, BACK-UP PLATES, END SECTIONS AND OTHER GUARDRAIL HARDWARE ARE IN ACCORDANCE WITH THE CURRENT ARTBA TECHNICAL BULLETIN NO. 268 ... UNLESS SPECIFIED OTHERWISE. DIMENSIONS FOR POSTS AND OFFSET BLOCKS WILL BE ACCORDING TO GA. STANDARD 4381.
 - FOR DETAILS OF GUARDRAIL ANCHORAGES, SEE APPLICABLE STANDARDS AND/OR CONSTRUCTION DETAILS.
 - FOR LOCATION OF GUARDRAIL SEE APPLICABLE LOCATION STANDARDS.
 - ALL STEEL HARDWARE COMPONENTS WILL BE CALVANIZED AFTER FABRI-CATION. GALVANIZING REPAIR COMPOUND (SEC. 645) WILL BE FIELD APPLIED TO ANY COATINGS DAMAGED.
 - WHEN GUARDRAIL IS REQUIRED ON CURVES WITH RADII LESS THAN 150', PRECURVED RAIL WILL BE REQUIRED.
 - PAYMENT FOR GUARDRAIL (Type 'W') TO INCLUDE OFFSET BLOCKS, POST, BACK-UP PLATES WHERE REQUIRED, BOLTS, NUTS, WASHERS, TERMINAL SECTIONS, ADDITIONAL POST WHERE REQUIRED, LEAVE-OUTS INCLUDING GROUT WHERE REQUIRED, & REMOVAL AND REPLACEMENT OF PORTIONS OF MEDIAN PAVING, SPILLWAYS, OR CATCH BASINS WHERE NECESSARY.
 - ALL DIMENSIONS ARE SUBJECT TO MANUFACTURING TOLERANCES.
 - STANDARD NET LENGTH OF RAIL ELEMENTS MAY BE EITHER 12'-6" OR 25'-0". THESE LENGTHS SHALL BE ARRANGED TO PROVIDE AS NEARLY AS POSSIBLE THE REQUIRED LENGTH FOR EACH INSTALLATION.

DEPARTMENT OF TRANSPORTATION STATE OF GEORGIA	
STANDARD "W" BEAM GUARDRAIL 31 INCH GUARDRAIL HEIGHT	
NO SCALE	AUGUST 2011
DES. G.L.O. (SUBMITTED) <i>B.A.H.</i>	NUMBER
DRW. G.L.O.	4380
CHK. B.R.E. (APPROVED) <i>Marjorie B. Pirelo</i>	
REVIEW B.A.S.	

Order Plans @ www.edline.com