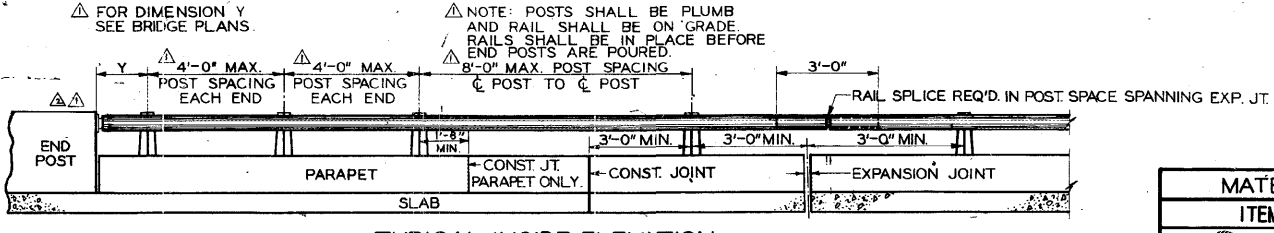
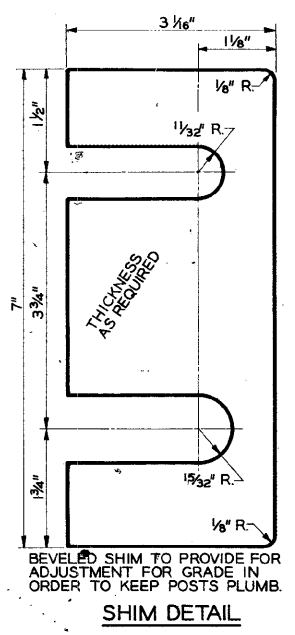
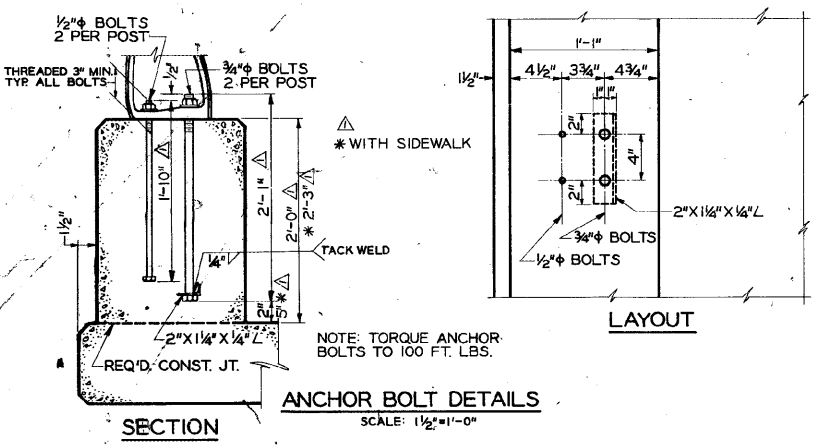
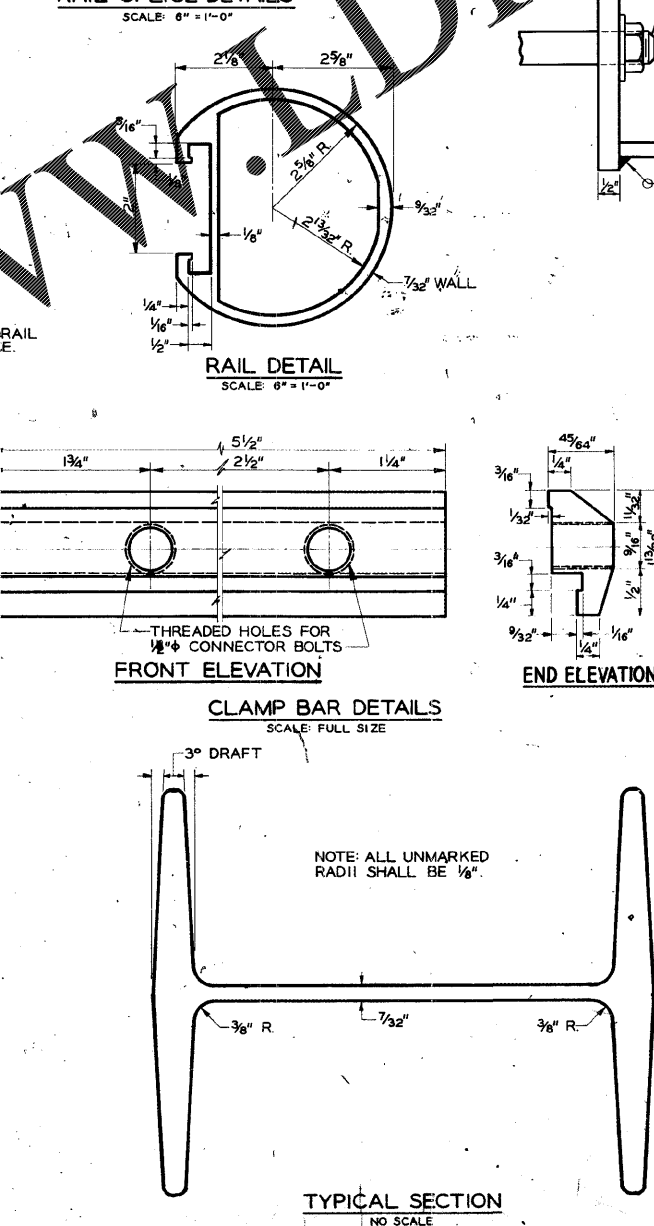
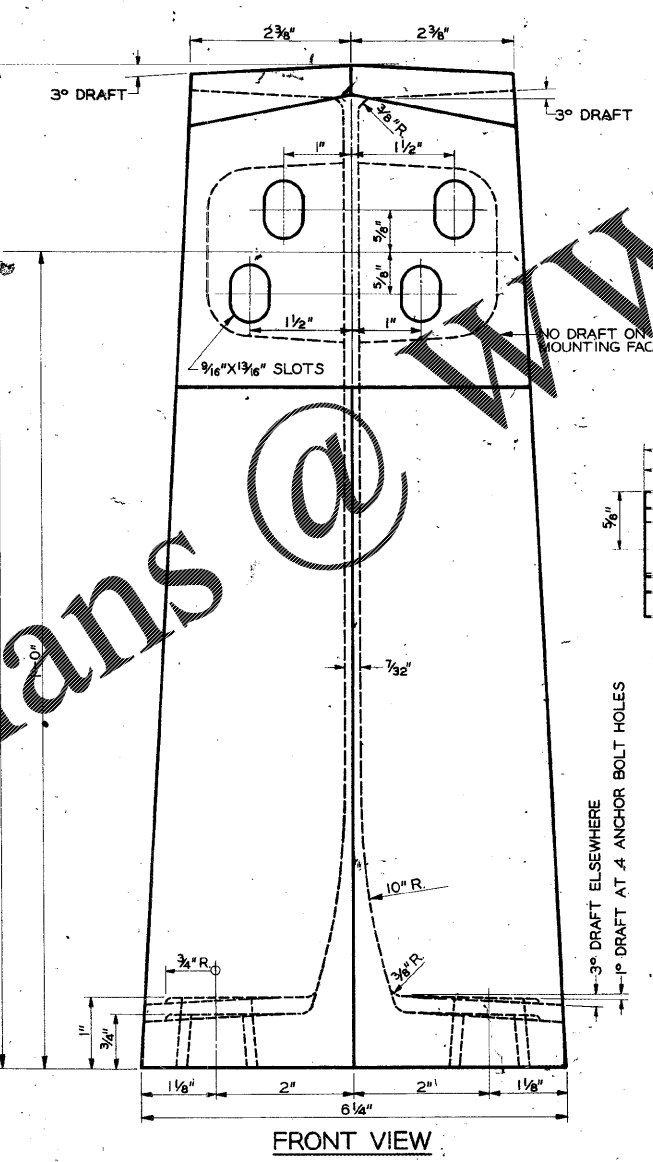
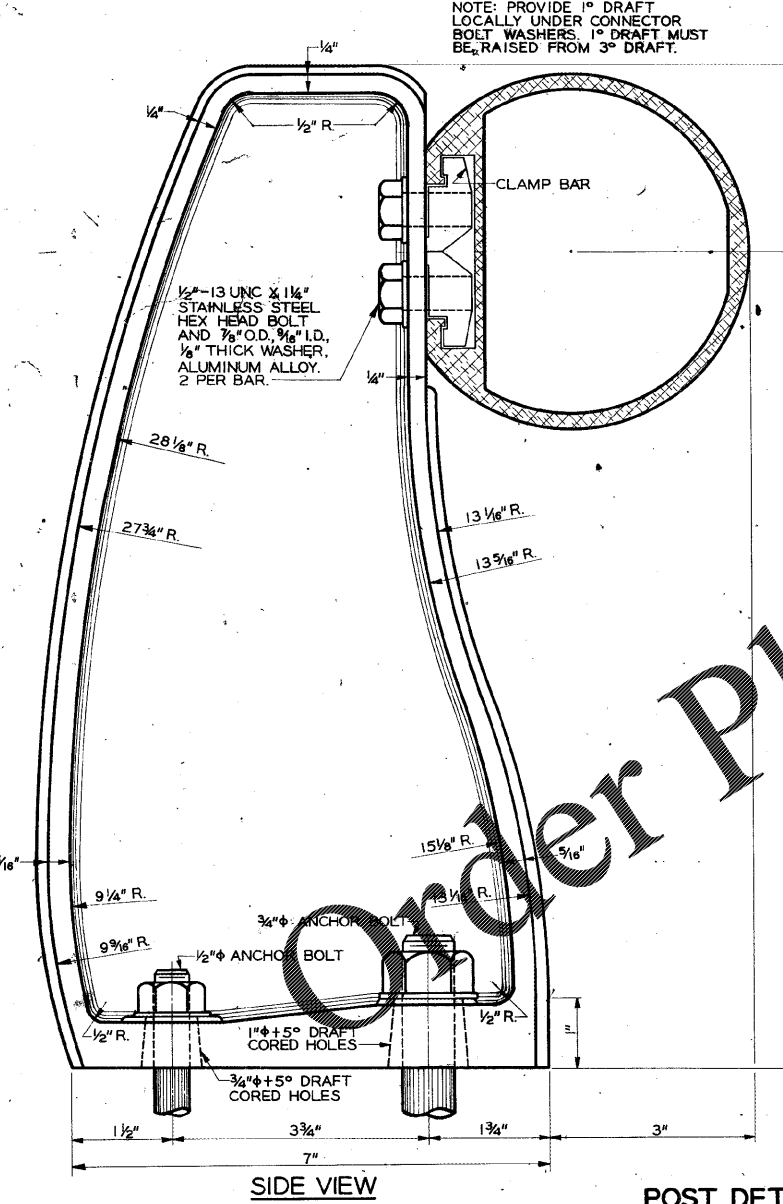
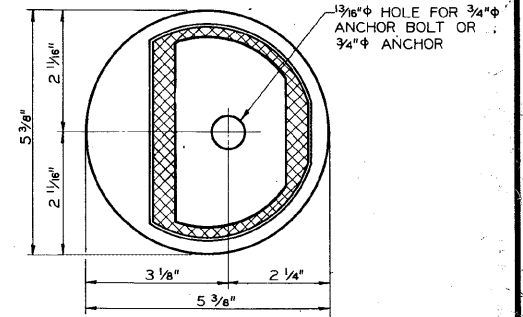
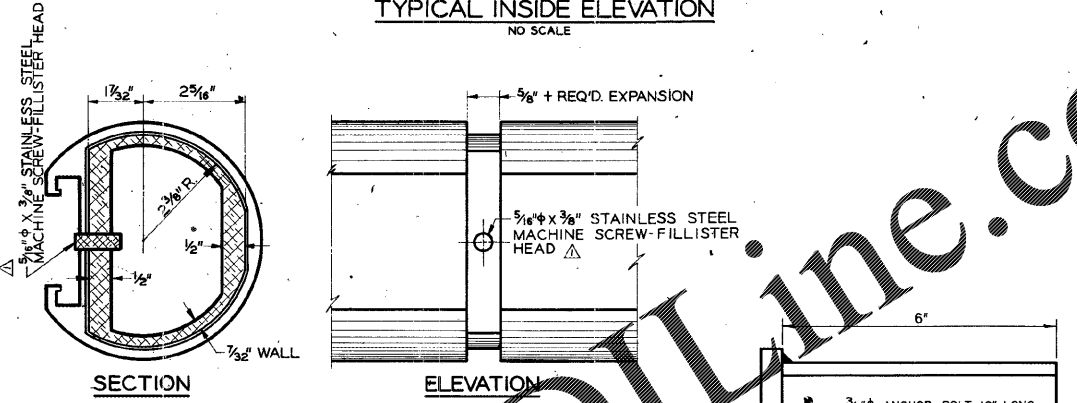


FED. ROAD DIV. No.	STATE	FED. AID PROJ. No.	STATE AID PROJ. No.	FISCAL YEAR	SHEET No.	TOTAL SHEETS
3	GA.					

NOTE: ANCHOR BOLTS SHALL BE HOT DIP GALVANIZED BOLTS WITH STD. A.S.R GALVANIZED HEX NUTS AND ALUMINUM ALLOY WASHERS.



MATERIAL SPECIFICATIONS	
ITEM	MATERIAL
POSTS	ALUM. ALLOY A444-T4
POSTING, CLAMP BAR, SPLICE SLEEVE AND END ATTACHMENT	A.S.T.M. B-221 ALLOY 6061, CONDITION T6
SHIM AND WASHER	A.S.T.M. SHIM, 1100-0° B-209 WASHER, ALCAD 2024-T3
ANCHOR BOLT & NUT	A.S.T.M. A-307 GALV. STEEL GALV. A-153
ANCHOR BOLT ANGLE	COMMERCIAL QUALITY
CONNECTOR BOLT	STAINLESS STEEL - A.S.T.M. A 276 TYPE 316 CONDITION A
MACHINE SCREW	STAINLESS STEEL - A.S.T.M. A276 TYPE 316 CONDITION A



GENERAL NOTES

SPECIFICATIONS - GEORGIA STANDARD.

RAILING SHALL CONFORM TO HORIZONTAL AND VERTICAL ALIGNMENT FOR RAILING ON A HORIZONTAL CURVE THE RAIL SHALL CONFORM TO THE CURVE. POSTS SHALL BE VERTICAL.

COST OF ANCHOR BOLTS, CONNECTOR BOLTS, NUTS, WASHERS, CLAMP BARS, SPLICE SLEEVES AND SHIMS SHALL BE INCLUDED IN PRICE BID FOR ALUMINUM RAILING.

RAILS SHALL BE CONTINUOUS OVER A MINIMUM OF 3 POSTS.

OUTER SURFACE OF POST FLANGES, EXCEPT BASE AND RAIL MOUNTING FACES, SHALL HAVE A NO. 36 GRIT FINISH.

1° DRAFT LOCALLY UNDER CONNECTOR BOLT HEAD MAY BE DEPRESSED PROVIDED BOLT LENGTH AND WASHER THICKNESS ARE REVISED TO FURNISH FULL ENGAGEMENT OF CLAMP BAR THREADS.

DEPARTMENT OF TRANSPORTATION
STATE OF GEORGIA

STANDARD ONE PIPE ALUMINUM HANDRAILING FOR BRIDGES

SCALE: 9" = 1'-0" UNLESS NOTED

OCTOBER 1964

DESIGNED	J.T.K.
DRAWN	R.M.
TRACED	B.J.W.
CHECKED	J.T.K.

APPROVED: *M. Marshall*
STATE HIGHWAY ENGINEER

NUMBER **3626**