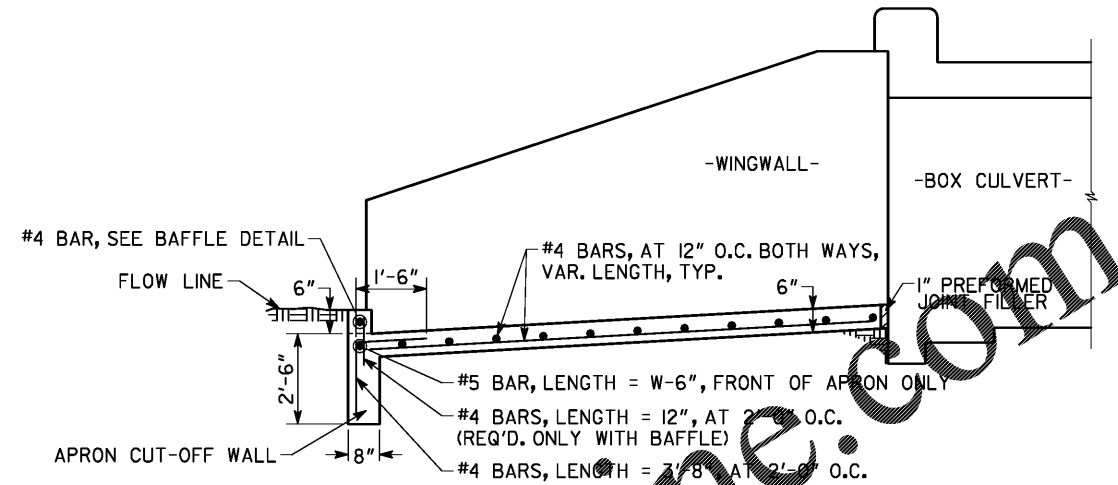


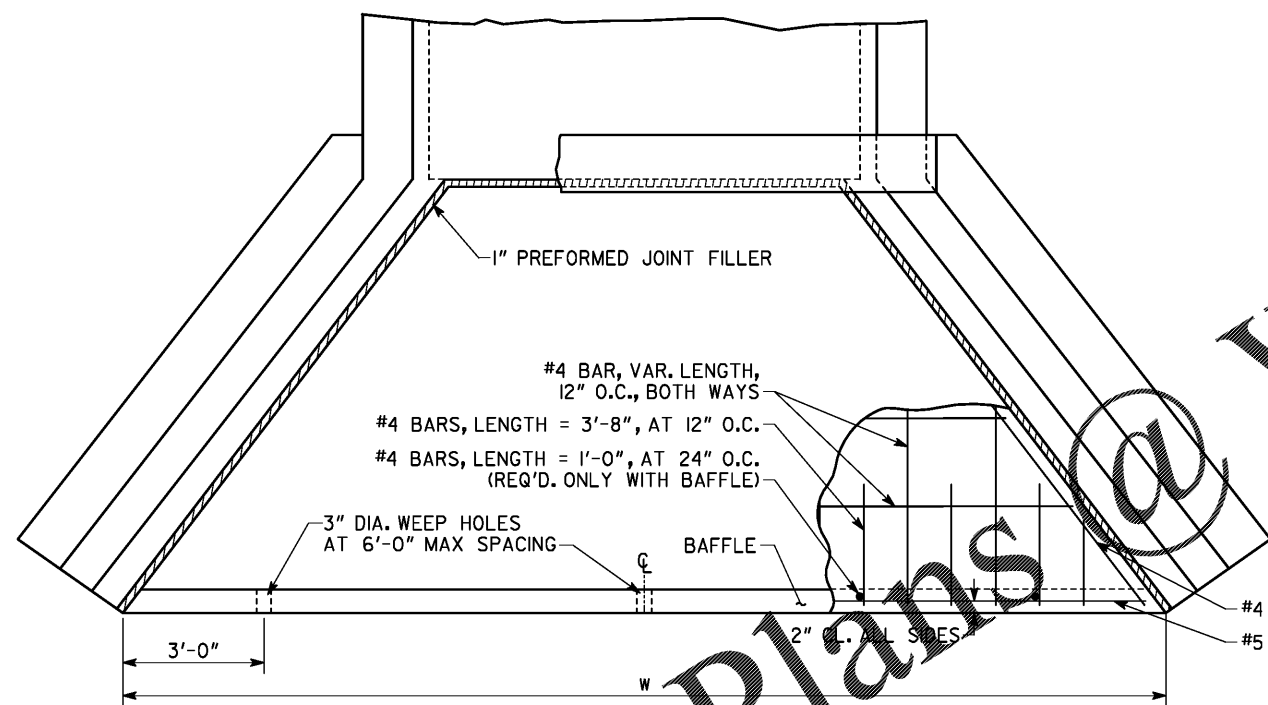
FRONT VIEW OF APRON

S = CLEAR SPAN OF BOX CULVERT
H = CLEAR HEIGHT (RISE) OF BOX CULVERT

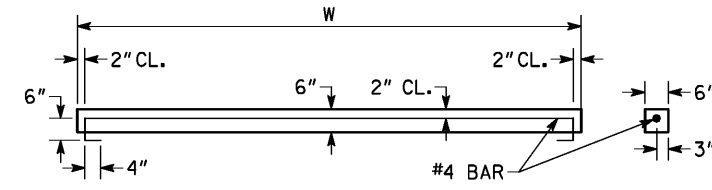


ELEVATION VIEW OF APRON

NOTE: 2" MIN. ON ALL SIDES UNLESS OTHERWISE NOTED.
SEE BOX CULVERT STANDARDS FOR DETAILS NOT SHOWN.
END OF EMBEDDED CULVERT APRON (NOT SHOWN) HAS THE SAME MINIMUM BACKFILL AS BARREL.



PLAN VIEW OF APRON



BAFFLE DETAIL

NOTE: CONSTRUCT BAFFLES FROM CLASS AA CONCRETE, MAY BE PRECAST OR CAST IN PLACE.
USE BAFFLES ON APRONS AT OUTLETS OF PIPES AND BOX CULVERTS AND IN PAVED DITCHES OR ELSEWHERE AT LOCATIONS SHOWN IN THE PLANS OR AS DIRECTED BY THE ENGINEER.

GENERAL NOTES

- 1) SPECIFICATIONS: GEORGIA STANDARD, CURRENT EDITION & SUPPLEMENTS THERETO.
- 2) CONCRETE APRONS AND BAFFLES ARE REQUIRED AT ALL OUTLETS OF ALL BOX CULVERT DRAINS. APRON IS NOT TO BE OMITTED AT OUTLETS UNLESS THE ENGINEER DETERMINES THAT BEDROCK WILL PREVENT EROSION AND MAKE THE APRON DIFFICULT TO CONSTRUCT. APRONS (WITHOUT BAFFLES) ARE USED AT INLETS ONLY IF PLANS SPECIFY.
- 3) DETAILS HERESHOWN APPLY TO LRFD STANDARD BOX CULVERTS.
- 4) ALL CONCRETE SHALL BE CLASS "AA" CONCRETE.
- 5) SEE SEPARATE STANDARDS FOR DETAILS OF BOX CULVERTS, WINGWALLS, PARAPETS, ETC.

DESIGN DATA

SPECIFICATIONS - AASHTO LRFD BRIDGE DESIGN SPECIFICATIONS, 7TH EDITION, 2014
LOADING - HL- 93.

Order Plans @

WWW.LDLINE.COM

DATE		DEPARTMENT OF TRANSPORTATION STATE OF GEORGIA	
REVISION		STANDARD	
		CONCRETE BOX CULVERT APRONS AND BAFFLES DETAIL	
		NO SCALE	SEPTEMBER 2017
BY	DES. WEI DRAW. EJC TRA. CHK. EJC	(SUBMITTED) STATE DESIGN POLICY ENGINEER (APPROVED) Margaret B. Puelo CHIEF ENGINEER	NUMBER 2406 SHEET 1 OF 2