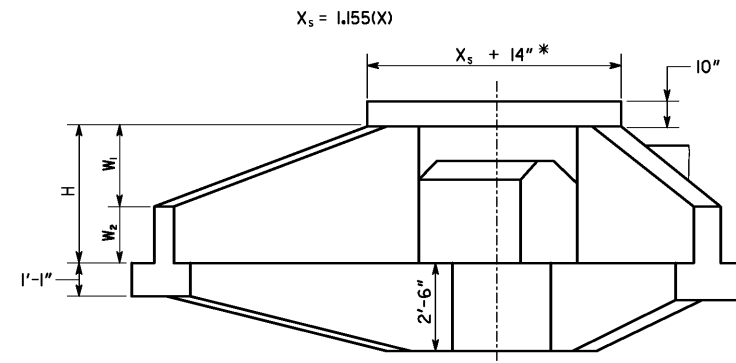
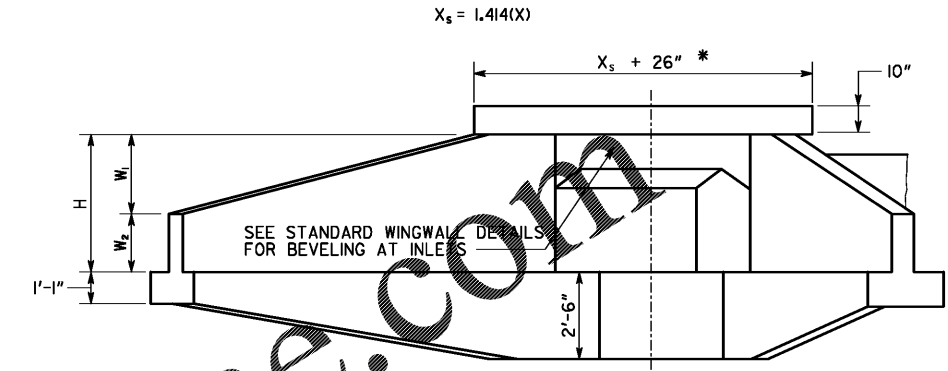


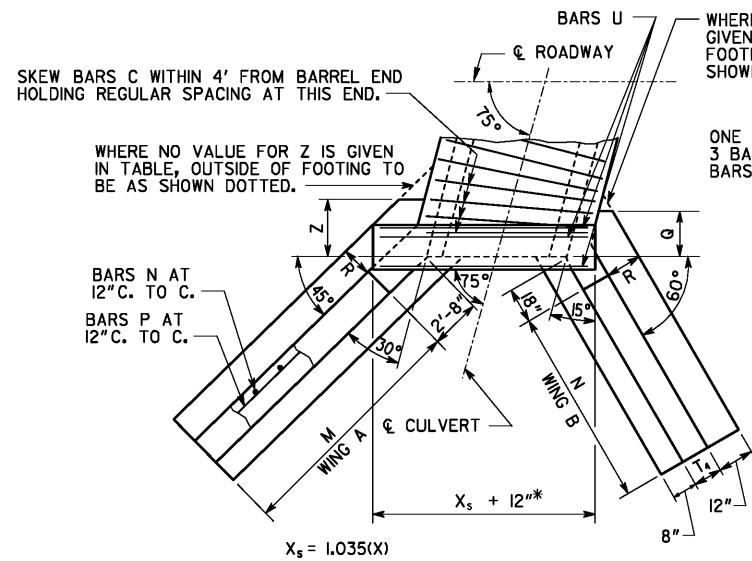
ELEVATION



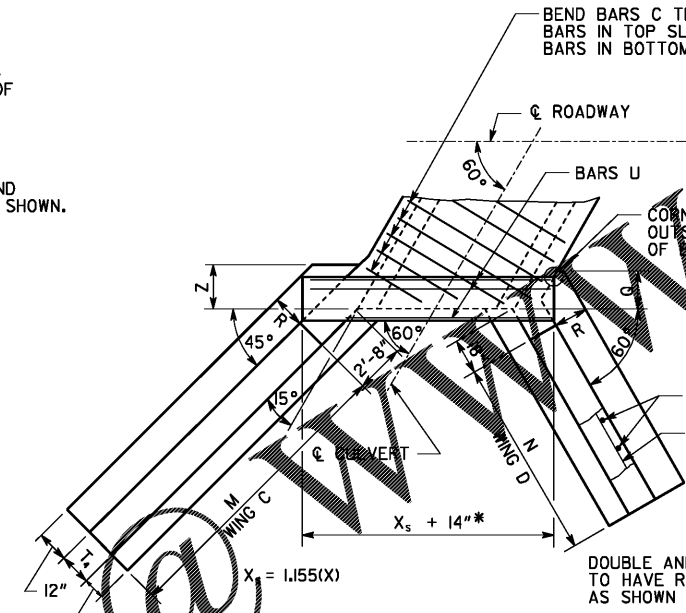
ELEVATION



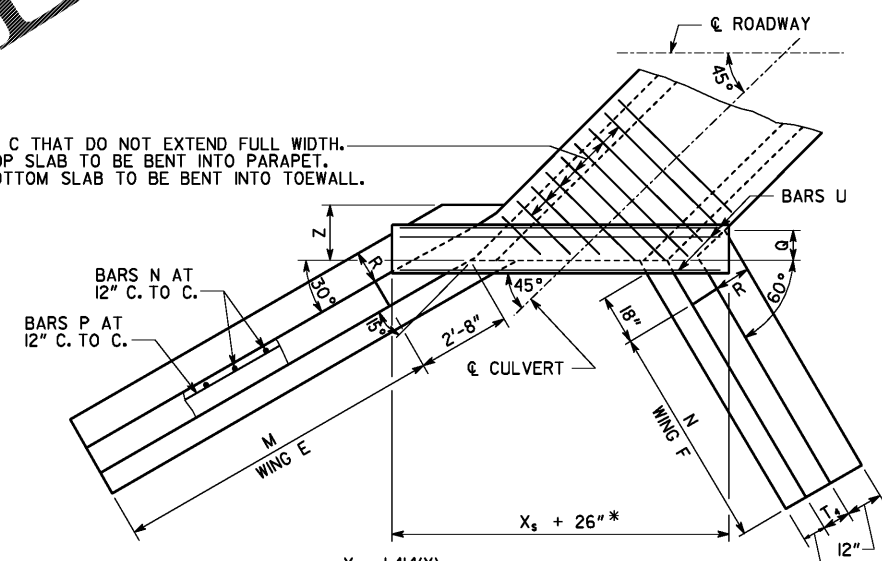
ELEVATION



PLAN
75° SKEW



PLAN
60° SKEW



PLAN
45° SKEW

* ROUND DIMENSION UP TO THE NEAREST INCH

BEND BARS C THAT DO NOT EXTEND FULL WIDTH. BARS IN TOP SLAB TO BE BENT INTO PARAPET. BARS IN BOTTOM SLAB TO BE BENT INTO TOEWALL.

BEND BARS C THAT DO NOT EXTEND FULL WIDTH. BARS IN TOP SLAB TO BE BENT INTO PARAPET. BARS IN BOTTOM SLAB TO BE BENT INTO TOEWALL.

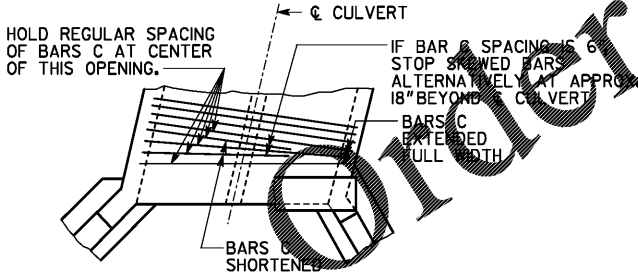
DOUBLE AND TRIPLE 45° AND 60° SKEWED BOXES TO HAVE REINFORCING BENT AND HOOKED AS SHOWN FOR SINGLE SKEWED BOXES.

BARS M AND U ARE SAME AS SHOWN FOR SINGLE SKEWED BOXES.

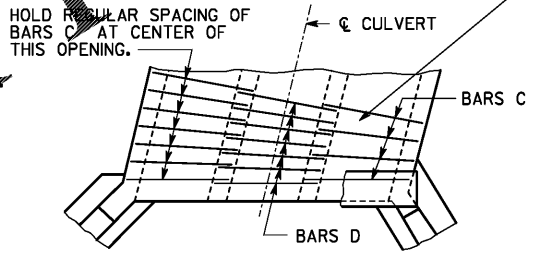
BEND BARS M AND U IN BARREL SLABS INTO WINGWALL AS NECESSARY TO PROVIDE 2" CLEARANCE AT EACH END.

BEND BARS M AND U IN BARREL TOEWALL INTO WING TOEWALL AS NECESSARY TO PROVIDE 2" CLEARANCE AT EACH END.

IF BAR C SPACING IS 6", OMIT BARS C OVER THIS OPENING ALTERNATIVELY.

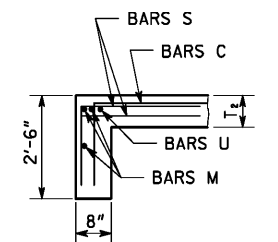


PART PLAN
DOUBLE 75° SKEW BOX

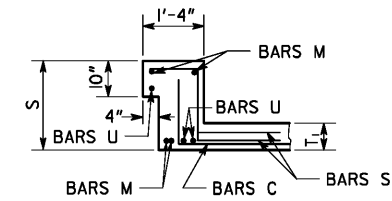


PART PLAN
TRIPLE 75° SKEW BOX

SHOWING ARRANGEMENT OF SKEWED BARS IN SLAB



SECTION OF TOEWALL
SHOWING BEND ON BARS C FOR 60° AND 45° SKEWS



SECTION OF PARAPET
SHOWING BEND ON BARS C FOR 60° AND 45° SKEWS

DESIGN DATA

SPECIFICATIONS - AASHTO LRFD BRIDGE DESIGN SPECIFICATIONS, 7TH EDITION, 2014
LOADING - HL-93

GENERAL NOTES

- 1) SPECIFICATIONS: GEORGIA STANDARD, CURRENT EDITION & SUPPLEMENTS THERETO.
- 2) THIS PLAN IS NOT COMPLETE IN ITSELF. FOR GENERAL NOTES, DETAILS AND DIMENSIONS NOT SHOWN, SEE "REINFORCED CONCRETE WINGWALLS, TOEWALLS, AND PARAPETS FOR CONCRETE BOX CULVERTS".
- 3) QUANTITIES FOR BARREL REMAIN AS SHOWN ON REINFORCED CONCRETE BOX CULVERT STANDARDS.
- 4) MAINTAIN 3" CLEARANCE ON REINFORCEMENT AT FACE OF CONCRETE CAST AGAINST EARTH. MAINTAIN 2" CLEARANCE ON ALL OTHER REINFORCEMENT.

DATE		DEPARTMENT OF TRANSPORTATION STATE OF GEORGIA	
REVISION		STANDARD REINFORCED CONCRETE SKEWED WINGWALLS, TOEWALLS AND PARAPETS FOR 75°, 60°, AND 45° SKEWS	
NO SCALE		SEPTEMBER 2017	
BY	DES. WEI DRAW. WEI TRA. TR CHK. YSK	(SUBMITTED) <i>B. A. St...</i> STATE DESIGN POLICY ENGINEER (APPROVED) <i>Margaret B. Puelo</i> CHIEF ENGINEER	NUMBER 2405 SHEET 1 OF 3