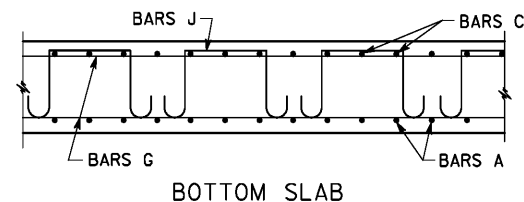
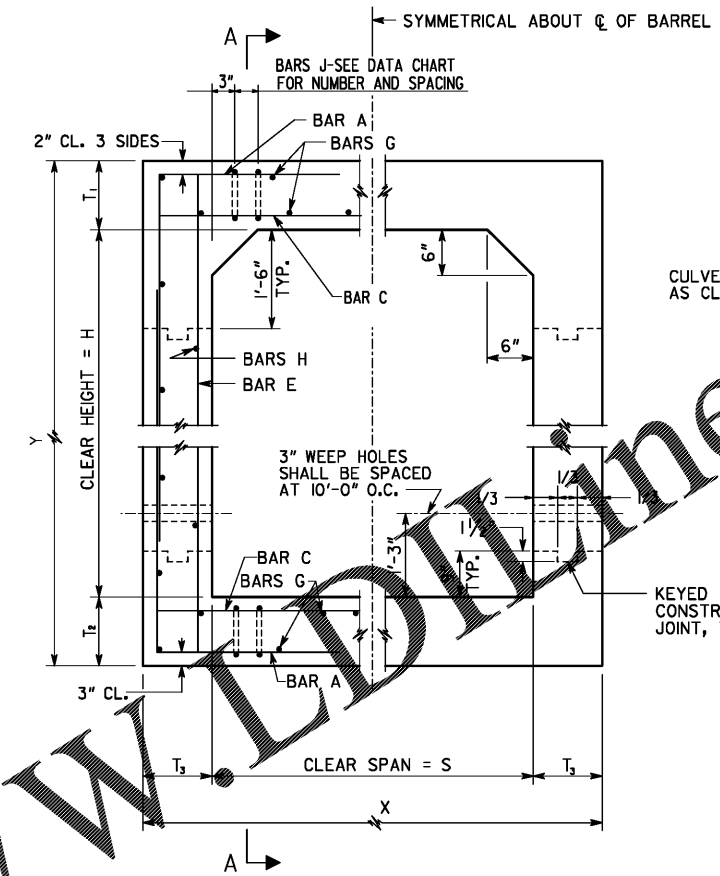


NOTE: SPACING OF BARS A AND C IS 6" OR 12". SEE BARREL REINFORCEMENT QUANTITIES AND DIMENSIONS.



NOTE: LONGITUDINAL WINGWALL AND PARAPET BARS EXTEND INTO BARREL. SEE WINGWALL AND PARAPET STANDARDS.

SECTION A-A



CULVERT SIZES ARE DESIGNATED AS CLEAR SPAN (S) X CLEAR HEIGHT (H).

* AT CONTRACTORS OPTION, THE LOWER CONSTRUCTION JOINT IN THE BARREL WALL MAY BE SHIFTED TO 6" ABOVE THE TOP OF THE BOTTOM SLAB.

TYPICAL BARREL SECTION-ALL DESIGNS

DESIGN	1	2	3	4	5	6	7	8
MAXIMUM FILL HEIGHT	10'	20'	30'	40'	50'	60'	70'	80'

- 1) MINIMUM HEIGHT FROM TOP OF CULVERT TO BOTTOM OF BASE WITHIN TRAVELWAY SHALL BE 1'-0".
- 2) DESIGN OF THE CULVERT SHALL BE DETERMINED BY THE MAXIMUM HEIGHT OF FILL WITH ONLY A SINGLE DESIGN BEING USED FOR THE ENTIRE INSTALLATION.
- 3) TRANSVERSE CONSTRUCTION JOINTS SHALL BE PLACED NORMAL TO THE CENTERLINE OF THE CULVERT AT THE OUTSIDE SHOULDER BREAK POINTS. THE MAXIMUM JOINT LENGTH ALONG THE LENGTH OF THE CULVERT SHALL NOT EXCEED 40'-0" FOR DESIGNS 1 TO 3 AND 30'-0" FOR DESIGNS 4 AND ABOVE.
- 4) LONGITUDINAL BARREL REINFORCEMENT STEEL IN THE TRANSVERSE CONSTRUCTION JOINTS SHALL EXTEND THROUGH JOINTS.
- 5) CONSTRUCTION JOINTS SHALL BE WATERPROOFED ON THE EXTERIOR TOP AND SIDES OF BARREL IN ACCORDANCE WITH SECTION 530 OF GEORGIA STANDARD SPECIFICATIONS. WATERPROOFING SHALL BE APPLIED WHEN CONCRETE IS AT LEAST 7 DAYS OLD. ALL COSTS ASSOCIATED WITH WATERPROOFING SHALL BE INCLUDED IN OTHER ITEMS AND WILL NOT BE MEASURED SEPARATELY FOR PAYMENT.

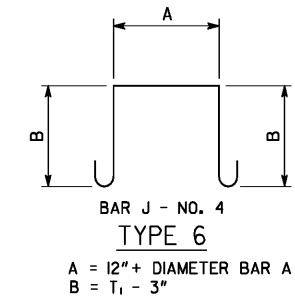
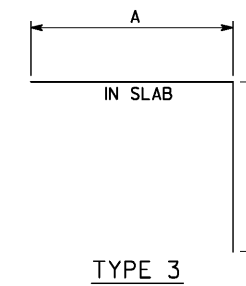
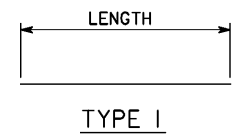
GENERAL NOTES

- 1) SPECIFICATIONS: GEORGIA STANDARD, CURRENT EDITION & SUPPLEMENTS THERETO.
- 2) ALL CONCRETE SHALL BE CLASS "AA".
- 3) CHAMFER ALL EXPOSED EDGES 3/4".
- 4) COST OF DRAIN PIPES, WEEP HOLES, COARSE AGGREGATE, AND ANY OTHER INCIDENTAL ITEMS SHALL BE INCLUDED IN THE PRICE BID FOR CONTRACT ITEMS.
- 5) CONSTRUCTION JOINTS IN BARREL WALLS ARE REQUIRED.
- 6) FOR DETAILS OF WINGWALLS AND PARAPETS SEE "REINFORCED CONCRETE WINGWALLS, TOEWALLS AND PARAPETS FOR CONCRETE BOX CULVERTS" SHEETS.

DESIGN DATA

SPECIFICATIONS - AASHTO LRFD BRIDGE DESIGN SPECIFICATIONS, 7TH EDITION, 2014. TYPICAL HL-93 LOADING.

FOR BAR DIMENSIONS SEE BAR REINFORCEMENT DETAILS. NUMBER OF J BARS SHOWN IN DATA CHART IS THE NUMBER PER CORNER IN ANY ONE TRANSVERSE PLANE. THE TOTAL NUMBER OF J BARS REQUIRED DEPENDS UPON THE LENGTH OF THE SECTION.



A = 12" + DIAMETER BAR A + 1"
B = T₁ - 3"

DATE		DEPARTMENT OF TRANSPORTATION STATE OF GEORGIA	
REVISION		STANDARD REINFORCED CONCRETE SINGLE BOX CULVERT	
NO SCALE		SEPTEMBER 2017	
DES. YSK	(SUBMITTED) <i>B. A. Ste...</i>	NUMBER	
DRW. FGS	STATE DESIGN POLICY ENGINEER	2401	
TRA. JWB	(APPROVED) <i>Margaret B. Puelo</i>	SHEET 1 OF 3	
CHK. JWB	CHIEF ENGINEER		