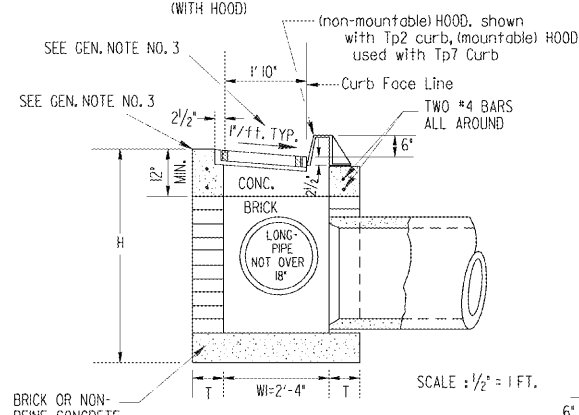
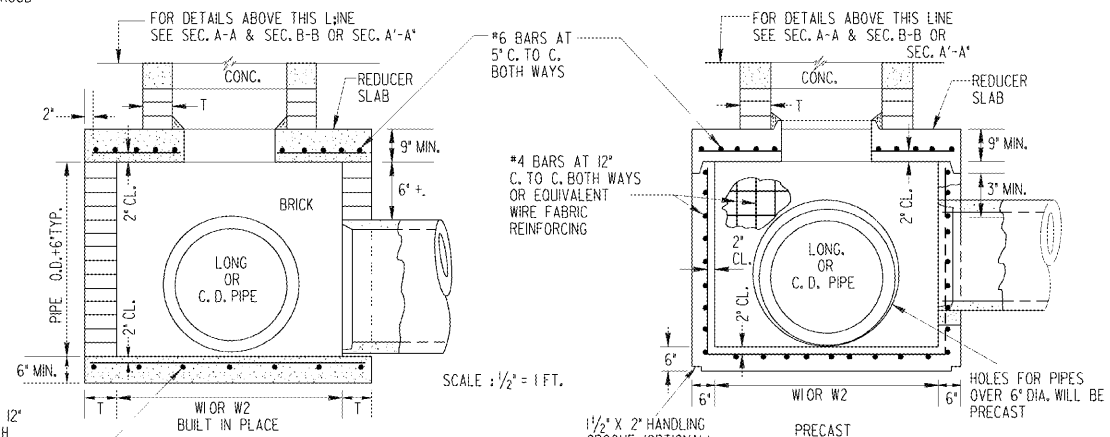


**DROP INLET TYPE V-1**  
(WITH HOOD)



**SECTION A-A**  
(SEE GEN. NOTE NO. 7)

**(DROP INLET TYPE V-1 OR TYPE V-2)**  
REDUCER SLABS OR BRICK TAPER (bottom left) ARE FOR USE WITH LARGER PIPES, IN GENERAL THIS WILL BE CROSS DRAIN PIPES OVER 24", LONGITUDINAL PIPES OVER 18" (Type V-1) AND LONGITUDINAL PIPES OVER 15" (Type V-2)



**SCALE: 1/2" = 1 FT.**

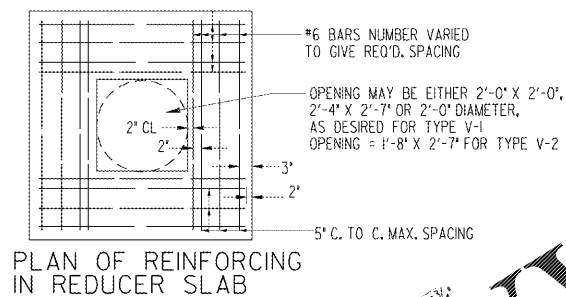
**DETAIL OF REDUCING W1 OR W2 DIMENSIONS WITH REDUCER SLAB.**

PIPE SIZE	W (MIN. OR W2 (MIN.))		H (MIN.)
	BRICK	REINF. CONC.	
15"	1'-8"	1'-8"	3'-10"
18"	2'-0"	2'-0"	4'-2"
24"	2'-7"	2'-7"	4'-9"
30"	3'-4"	3'-6"	5'-10"
36"	3'-10"	4'-0"	6'-5"
42"	4'-5"	4'-6"	7'-0"
48"	5'-0"	5'-0"	7'-10"
54"	5'-7"	5'-6"	8'-5"
60"	6'-2"	6'-0"	9'-0"

W1 x W2 NOT LESS THAN 2'-4" x 2'-7" FOR TYPE V-1 AND NOT LESS THAN 1'-8" x 2'-7" FOR TYPE V-2

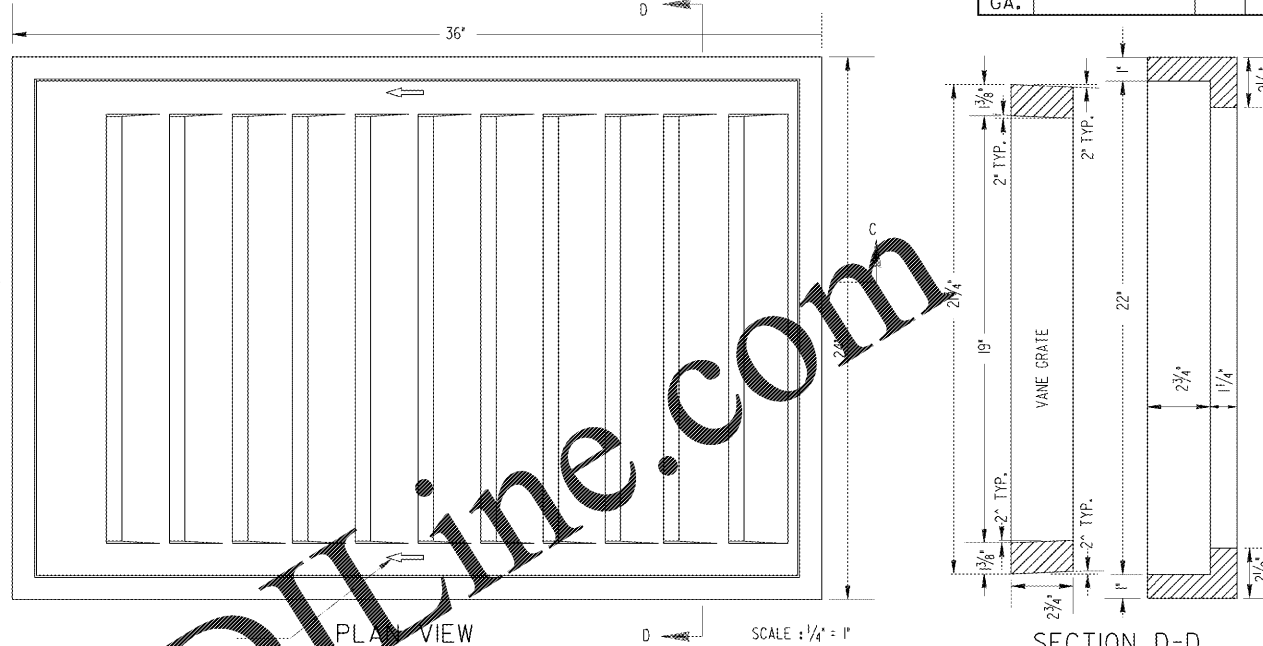
NOTE: THE MINIMUM H DIMENSIONS SHOWN ARE BASED ON TYPICAL OUTSIDE DIAMETERS OF PIPES AND MAY BE MODIFIED WHERE THE ENGINEER OR DESIGNER DETERMINES THAT CONDITIONS PERMIT. IT IS NOT NECESSARY THAT THE BOX TYPE BASE BE SQUARE. W1 AND W2 DIMENSIONS WILL VARY ACCORDING TO PIPE SIZE.

BRICK WALL THICKNESS	
H	T (MIN.)
TO 10'	8"
10' TO 20'	12"
20' TO 30'	16"



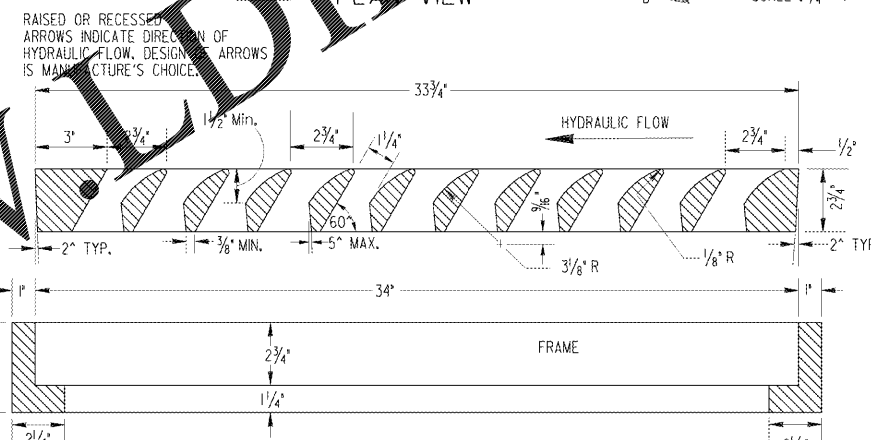
**PLAN OF REINFORCING IN REDUCER SLAB**

**GRATE AND FRAME DETAILS**



**PLAN VIEW**

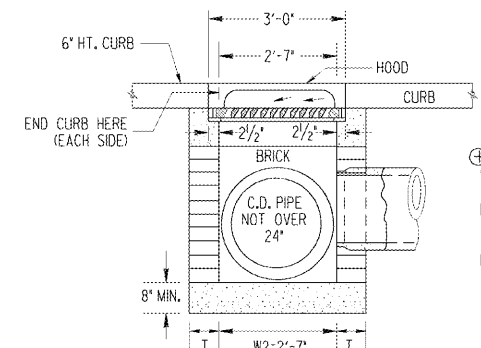
**SECTION D-D**



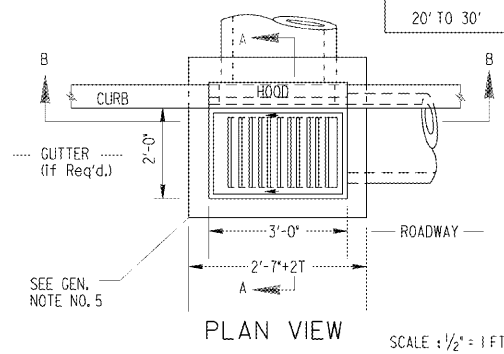
**SECTION C-C**

MATERIAL FOR GRATE: GRAY IRON, A.S.T.M. A-48 CLASS 30.

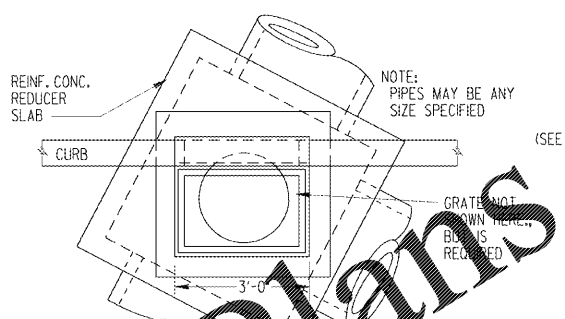
NOTE: FRAME IS SAME AS GA. STD. 1040 OR CITY OF ATLANTA FRAME, TYPE B



**SECTION B-B**  
SCALE: 1/2" = 1 FT.

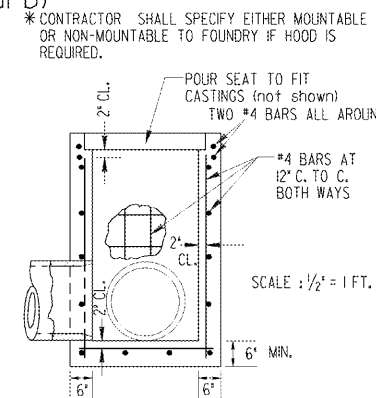


**PLAN VIEW**  
SCALE: 1/2" = 1 FT.

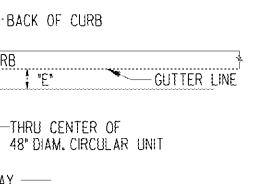


**TYPICAL PLAN VIEW WITH SKEWED PIPES**

**DETAIL OF HOOD (mountable) (use with Tp7 Curb)**



**SCALE: 1/2" = 1 FT.**



**ALTERNATE - STANDARD 1040 CIRCULAR SECTIONS - PLAN VIEW LOCATION.**  
NOTE: STD. 1040 ALTERNATE PERMITTED WITH ANY PIPE SIZE OR SKEW.

**ALTERNATE - CAST-IN-PLACE REINFORCED CONCRETE**

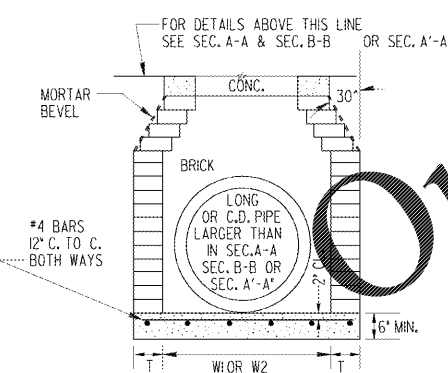
SPECIAL NOTE: BARS OF GRATE WILL BE PERPENDICULAR TO DIRECTION OF TRAFFIC FLOW.

**GENERAL NOTES:**

- SPECIFICATIONS: GEORGIA STANDARD AND/OR SPECIAL PROVISIONS EXCEPT THAT VANE GRATE WILL BE GRAY IRON A.S.T.M. A-48 CLASS 30.
- ALIGNMENT, NUMBER AND SIZES OF PIPES SHOWN ARE ONLY TYPICAL. SEE PLANS FOR ACTUAL PIPE CULVERT REQUIREMENTS.
- SLOPE OF GRATE WILL MATCH GUTTER SLOPE WHEN USED WITH CURB AND GUTTER. SLOPE OF GRATE WILL MATCH ROADWAY SLOPE, WHERE THERE IS NO GUTTER (I.E., HEADER CURB, INTEGRAL CURB, ETC.). TOP OF HOOD WILL BE FLUSH WITH TOP OF CURB FOR TYPE V-1.
- CONCRETE WILL BE CLASS 'A' CONCRETE.
- 1/2" EXPANSION JOINTS WILL BE REQUIRED IF RIGID PAVEMENT, SIDEWALK OR CONCRETE GUTTER MEETS DROP INLETS.
- ALL STRUCTURES OVER 4 FT. DEEP SHALL REQUIRED STEPS OF A TYPE APPROVED BY THE MATERIALS LABORATORY OR 3/4" DIA. BARS STEPS AS SHOWN FOR OTHER INLET TYPES. NUMBER AND LOCATION OF STEPS SHALL BE AS DIRECTED BY THE ENGINEER.
- METAL HOODS DO NOT IMPROVE HYDRAULICS OF INLETS. TYPE V-1 DROP INLETS ARE NORMALLY USED TO PROVIDE CONTINUITY OF CURB OR TO ALLOW LARGER BOX WITHOUT TAPER OR REDUCER SLAB.

**ALTERNATE-REDUCTION OF W1 OR W2 DIMENSIONS WITH BRICK MASONRY**

**SCALE: 1/2" = 1 FT.**



PIPE SIZE	H (MIN.)
15"	3'-10"
18"	4'-2"
24"	4'-9"
30"	5'-10"
36"	6'-5"
42"	7'-0"
48"	7'-10"
54"	8'-5"
60"	9'-0"

DATE		DEPARTMENT OF TRANSPORTATION STATE OF GEORGIA	
REVISION		STANDARD DROP INLET TYPES V-1 AND V-2	
SCALE AS SHOWN		AUGUST, 1999	
BY	DES. (SUBMITTED)	NUMBER 1019B	
DRW.	TRA. (APPROVED)	CHIEF ENGINEER	
CHK.			