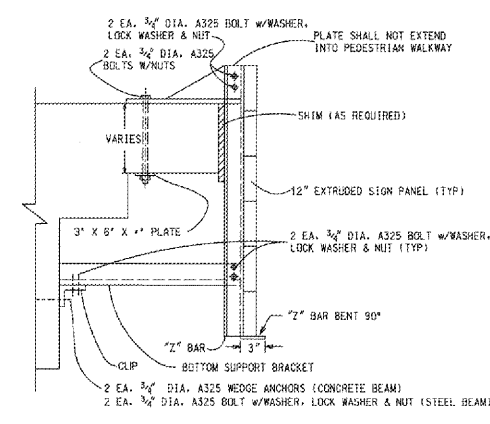
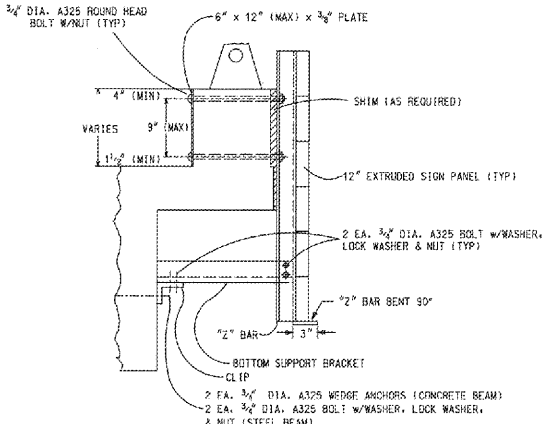


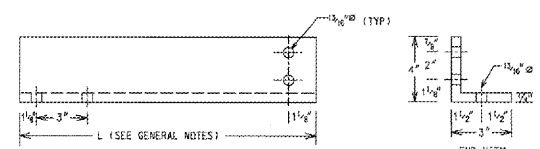
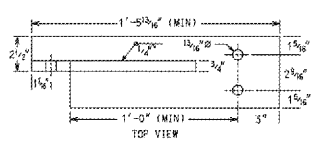
| STATE | PROJECT NUMBER | SHEET NO. | TOTAL SHEETS |
|-------|----------------|-----------|--------------|
| GA. | | | |



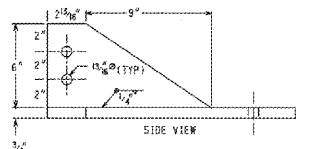
DECK OVERHANG ATTACHMENT DETAIL



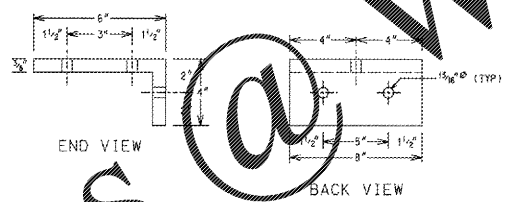
PARAPET ATTACHMENT DETAIL



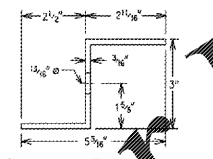
BOTTOM SUPPORT BRACKET DETAIL



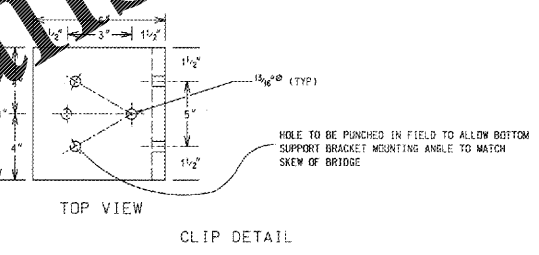
MOUNTING PLATE DETAIL



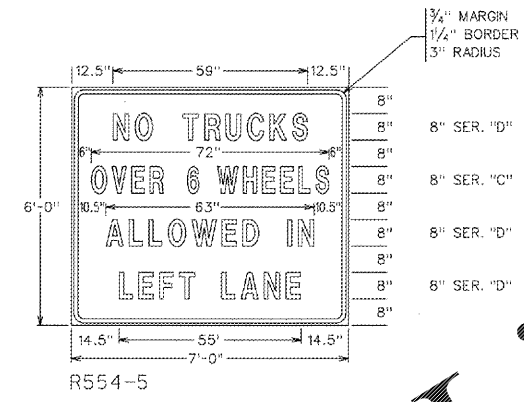
END VIEW
BACK VIEW



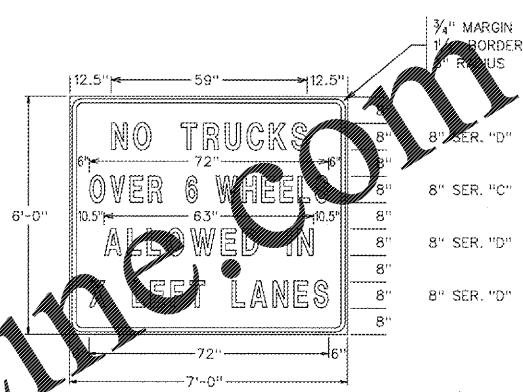
Z BAR DETAIL



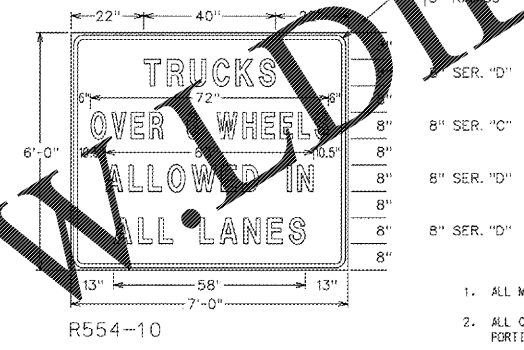
TOP VIEW
CLIP DETAIL



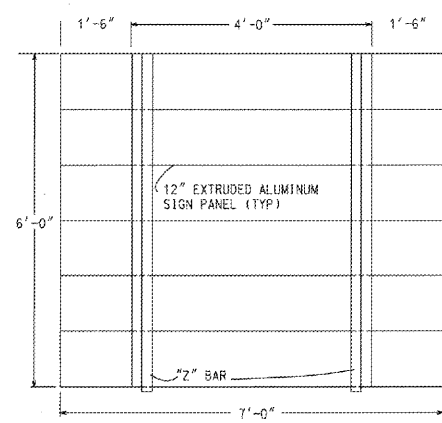
R554-5



| SIGN CODE | X |
|-----------|---|
| R554-6 | 2 |
| R554-7 | 3 |
| R554-8 | 4 |
| R554-9 | 5 |



R554-10



SIGN ASSEMBLY DETAIL (BACK VIEW)

3/8\"/>

3/8\"/>

GENERAL NOTES

- ALL MATERIALS SHALL BE A709 GRADE 36 GALVANIZED STEEL UNLESS SPECIFIED OTHERWISE.
- ALL CONNECTIONS SHALL BE MADE WITH SELF LOCKING NUTS OR SPOT WELDED. THE THREADED PORTION OF BOLTS SHALL EXTEND A MINIMUM OF 1/2 INCH BEYOND NUT.
- THE R554-5 SIGN SHALL BE USED ON ROADWAYS WITH 3 LANES OF TRAVEL IN ONE DIRECTION. THE R554-6, 7, OR 8 SIGNS SHALL BE USED ON ROADWAYS OF 4, 5, OR 6 LANES, RESPECTIVELY, OF TRAVEL IN ONE DIRECTION.
- WHEN USED, SHIMS SHALL BE ATTACHED TO THE "Z" BARS SUPPORTING THE SIGN. ON BRIDGES WITH A DECK OVERHANG, THE LENGTH OF THE MOUNTING PLATE SHALL BE INCREASED IN PROPORTION TO THE NUMBER OF SHIMS USED. ON BRIDGES WITH A PARAPET, THE LENGTH OF THE BOLTS SHALL BE INCREASED IN PROPORTION TO THE NUMBER OF SHIMS USED.
- ON BRIDGES WITH A SLOPE OTHER THAN ZERO, SHIMS SHALL BE USED TO ADJUST THE SIGN SO THAT THE BOTTOM OF THE SIGN IS LEVEL. WHEN USED, SHIMS SHALL BE ATTACHED TO THE BOTTOM OF THE MOUNTING PLATE.
- ON BRIDGES WITH A DECK OVERHANG, THE LENGTHS OF THE BOLTS SHALL BE INCREASED IN PROPORTION TO THE NUMBER OF SHIMS USED. ON BRIDGES WITH A PARAPET, THE HOLES FOR BOLTS SHALL BE DRILLED SO THAT THE SIGN IS LEVEL.
- THE BOTTOM OF THE SIGN SHALL NOT EXTEND BELOW THE BOTTOM OF THE BRIDGE BEAM.
- FOR DETAILS OF ALUMINUM EXTRUDED SIGN PANELS, POST CLIPS, AND BOLTS, SEE THE CURRENT VERSION OF GEORGIA STANDARD 9042.
- THE LENGTH (L) OF THE BOTTOM SUPPORT BRACKET DEPENDS UPON THE BRIDGE BEAM SETBACK, AND SHALL BE DETERMINED IN THE FIELD.

| DATE | REVISIONS | GEORGIA DEPARTMENT OF TRANSPORTATION OFFICE OF TRAFFIC SAFETY & DESIGN |
|---------|---|---|
| 9/11/01 | REV. DETAILS FOR BEST PRACTICES ADDED DETAIL FOR R554-10 | |
| | | |
| | | |
| | | |
| | | |

DETAILS OF BRIDGE ATTACHMENT
NO SCALE JANUARY 2000

Order Plans @ www.tdline.com

REVISION DATES

CONSTRUCTION DETAILS
SR 18 BRIDGE REPLACEMENT @ LONG CAME CREEK
TROUP COUNTY

| | | |
|--------------|-------|-------------|
| CHECKED: | DATE: | DRAWING No. |
| BACKCHECKED: | DATE: | |
| CORRECTED: | DATE: | |
| VERIFIED: | DATE: | 40-0018 |