

ROADWAY SECTION WITH NON-MOUNTABLE CURB

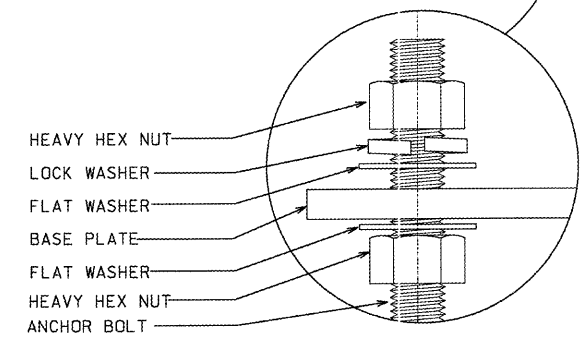
ROADWAY SECTION WITHOUT CURB

NOTE: FOR SPECIFICATIONS OF STEEL STRAIN POLES BASE PLATE, CONCRETE STRAIN POLES AND MISCELLANEOUS HARDWARE SEE GEORGIA STANDARD SPECIFICATIONS, SECTION 639 AND SPECIAL PROVISION.

CLEAR ZONE DISTANCE (IN FEET FROM EDGE OF DRIVING LANE)

DESIGN SPEED	DESIGN ADT	FILL SLOPES			CUT SLOPES		
		6:1 OR FLATTER	4:1 TO 3:1	3:1	4:1 TO 5:1	5:1	6:1 OR FLATTER
40 MPH OR LESS	UNDER 750	7-10	7-10	**	7-10	7-10	7-10
	750-1500	10-12	12-14	**	10-12	10-12	10-12
	1500-6000	12-14	14-16	**	12-14	12-14	12-14
	OVER 6000	14-16	16-18	**	14-16	14-16	14-16
45-50 MPH	UNDER 750	7-10	7-10	**	8-10	8-10	10-12
	750-1500	12-14	16-20	**	10-12	12-14	14-16
	1500-6000	16-18	20-26	**	12-14	14-16	16-18
	OVER 6000	18-20	24-28	**	14-16	18-20	20-22
55 MPH	UNDER 750	7-10	14-18	**	8-10	10-12	10-12
	750-1500	16-18	20-24	**	10-12	14-16	16-18
	1500-6000	20-22	24-30	**	14-16	16-18	20-22
	OVER 6000	22-24	26-32	**	16-18	20-22	22-24

\* POLES SHOULD NOT BE PLACED IN THE VICINITY OF THE TOP OF THESE SLOPES.



DETAIL OF ANCHOR BOLT AND HARDWARE

DATE	REVISIONS	GEORGIA DEPARTMENT OF TRANSPORTATION OFFICE OF TRAFFIC SAFETY & DESIGN

DETAILS OF STRAIN POLE ERECTION FOR OVERHEAD SIGNS

NO SCALE JANUARY 2000